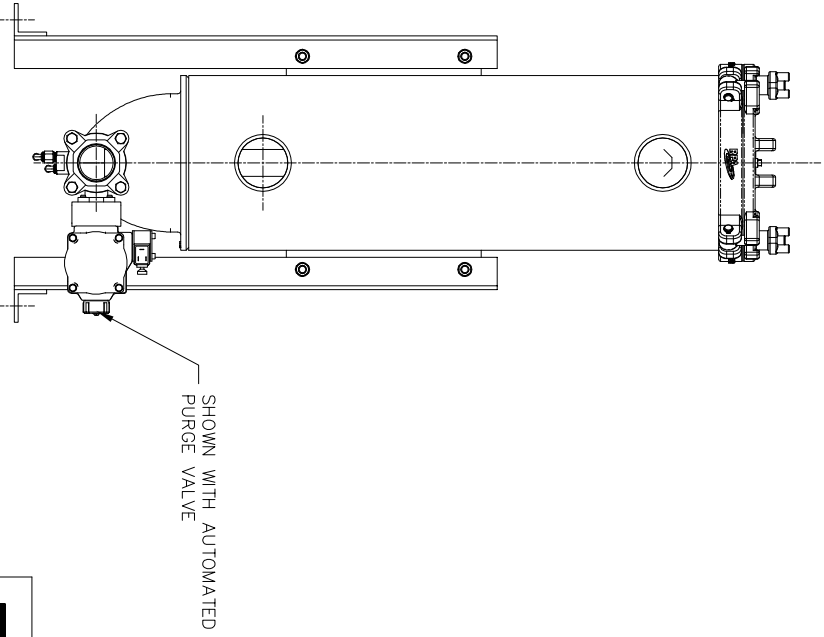
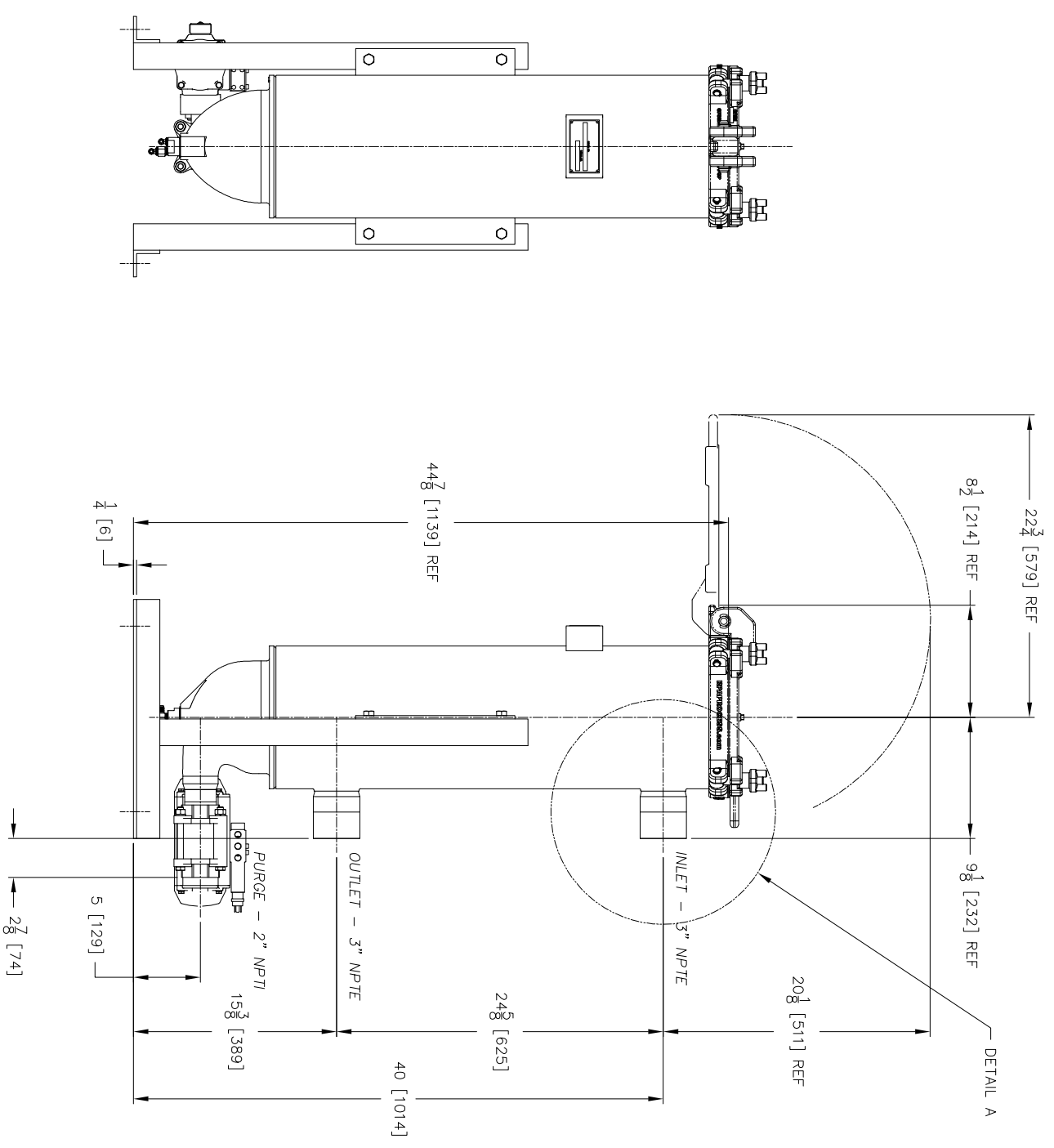
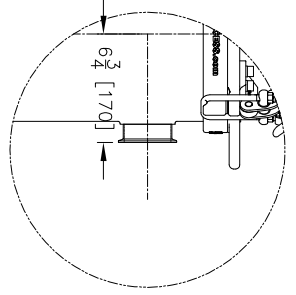
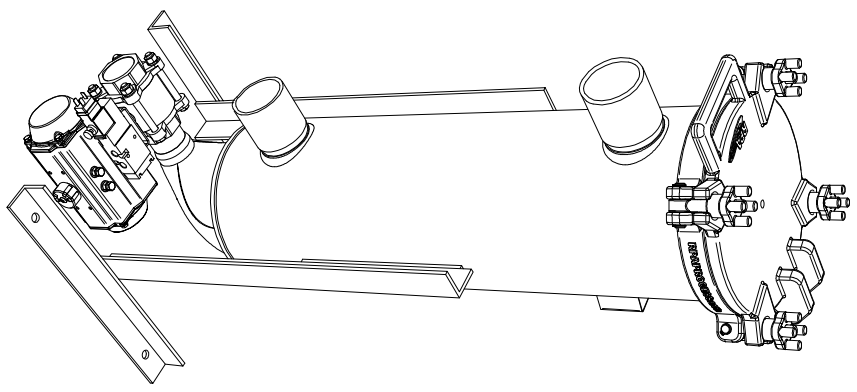
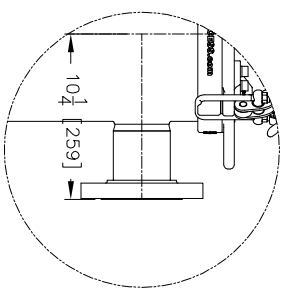
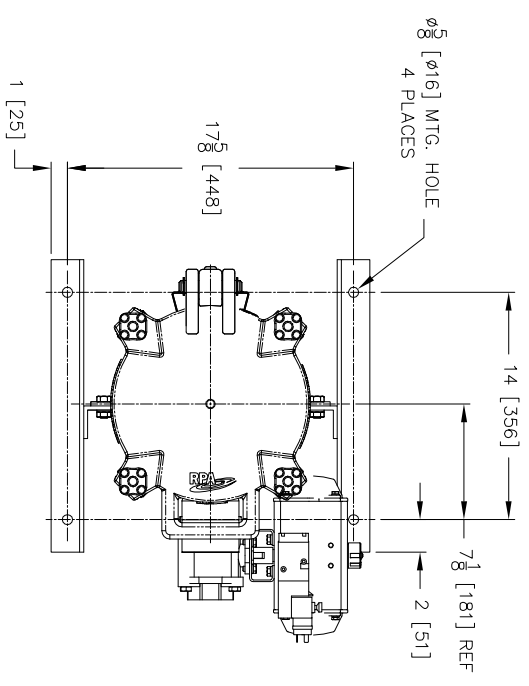


THIRD ANGLE PROJECTION



- NOTES
1. ALL DIMENSIONS ARE SHOWN IN INCHES WITH MILLIMETER EQUIVALENTS IN BRACKETS.
 2. $\frac{1}{4}$ " NPTI GAUGE PORTS ON THE INLET AND OUTLET ARE OPTIONAL.
 3. SERVICE REQUIREMENTS:
 AIR PRESSURE: 60 PSI [4.1 BAR] MINIMUM AT 5 CFM [141.5 L/min], CLEAN, DRY, NON-LUBRICATED AIR.
 DESIGN CONDITIONS:
 MAXIMUM WORKING PRESSURE: 150 PSI [10.3 BAR].
 MINIMUM WORKING PRESSURE: 30 PSI [2.1 BAR].
 MAXIMUM DIFFERENTIAL PRESSURE: 110 PSID [7.6 BAR] FOR SLOTTED AND PERFORATED ELEMENTS, 50 PSID [3.4 BAR] FOR DEFINED PORE ELEMENTS.
 - 4.



EATON FILTRATION
 DESIGN CENTER
 ISELIN, NEW JERSEY, USA
 PORTAGE, MICHIGAN, USA

THIS DRAWING AND ALL INFORMATION HEREON IS THE PROPERTY OF EATON. THIS DRAWING IS LOANED TO YOU BY EATON AND IS NOT TO BE REPRODUCED, COPIED, OR IN ANY MANNER PUBLIC OR COPIED IN WHOLE OR IN PART WITHOUT THE EXPRESS WRITTEN PERMISSION OF EATON. THIS DRAWING IS LOANED SUBJECT TO RETURN ON DEMAND TO THE INTERESTS OF EATON FILTRATION, LLC.

ENGINEERING APPROVAL
 SALES/MKTG APPROVAL

DRAWN BY
 M. DESJARDINS
 SCALE
 NONE

TITLE
 MAGNETICALLY CARRIED, DISC CLEANED
 FILTER, SWING BOLT VERSION

ENGINEERING SPECIFICATION

DATE
 05/26/05

SIZE
 B

DWG FILENAME
 MCF-824-SNG-GA001

REV
 A