

| DEFINED PORE SIZES |                    |      |
|--------------------|--------------------|------|
| P/N                | RETENTION (MICRON) |      |
| 63087              | 0.001"             | 25   |
| 63088              | 0.0015"            | 38   |
| 63077              | 0.002"             | 50   |
| 63060              | 0.003"             | 75   |
| 63061              | 0.004"             | 100  |
| 63062              | 0.006"             | 150  |
| 63063              | 0.009"             | 230  |
| 63064              | 0.015"             | 380  |
| 63065              | 0.024"             | 610  |
| 63066              | 0.030"             | 760  |
| 63067              | 0.045"             | 1140 |

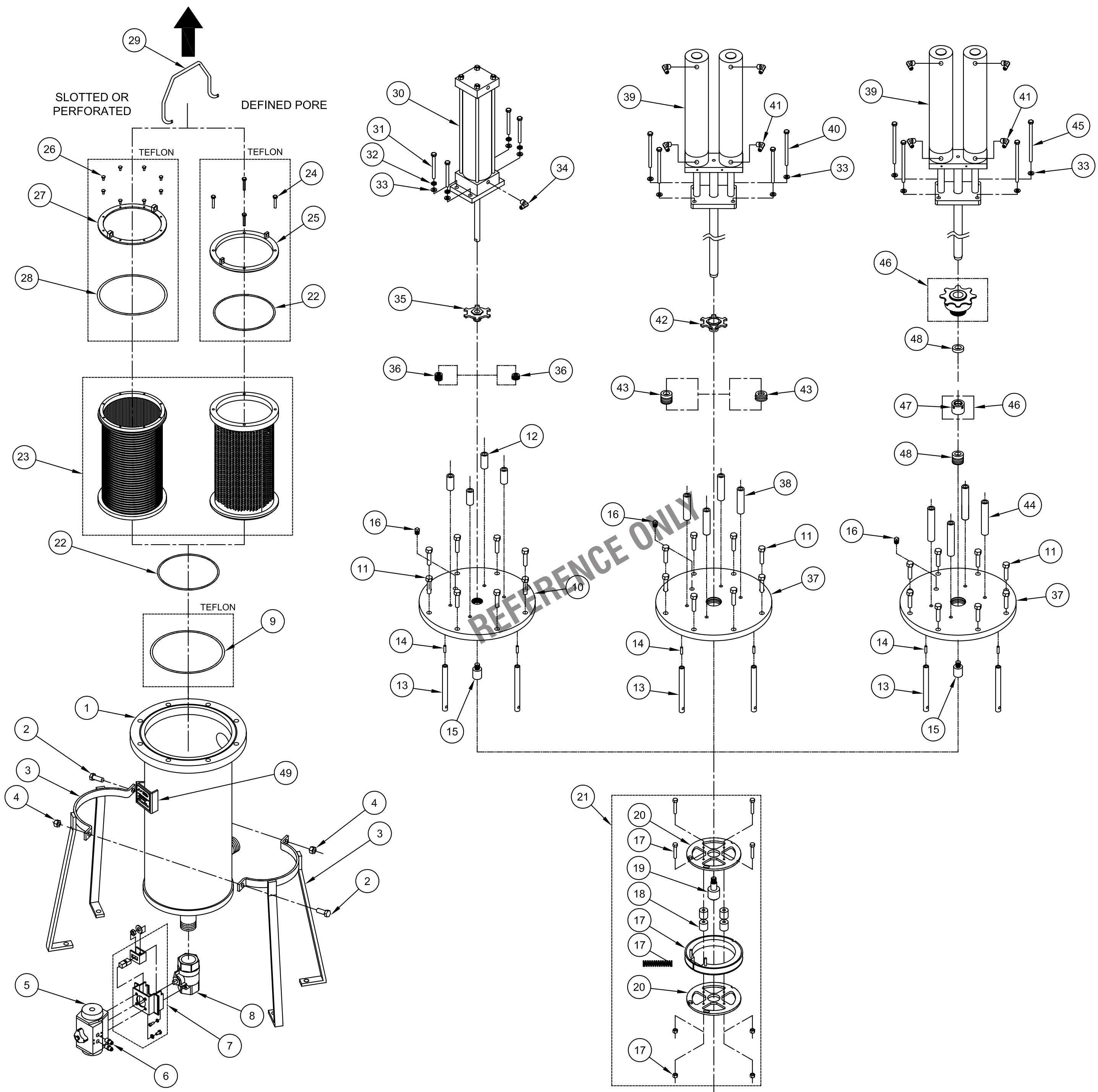
| TEFLON                |                    |      |
|-----------------------|--------------------|------|
| SLOTTED ELEMENT SIZES |                    |      |
| P/N                   | RETENTION (MICRON) |      |
| 46661                 | 0.0006"            | 15   |
| 46662                 | 0.001"             | 25   |
| 40666                 | 0.0015"            | 38   |
| 46663                 | 0.002"             | 50   |
| 46664                 | 0.003"             | 75   |
| 46665                 | 0.004"             | 100  |
| 46666                 | 0.006"             | 150  |
| 46667                 | 0.007"             | 175  |
| 46656                 | 0.008"             | 200  |
| 46667                 | 0.009"             | 230  |
| 46668                 | 0.015"             | 380  |
| 47340                 | 0.024"             | 610  |
| 46659                 | 0.030"             | 750  |
| 46658                 | 0.045"             | 1125 |

| PERFORATED ELEMENT SIZES |                    |      |
|--------------------------|--------------------|------|
| P/N                      | RETENTION (MICRON) |      |
| 42674                    | 0.062"             | 1550 |
| 42675                    | 0.125"             | 3125 |
| 42676                    | 0.250"             | 6250 |

| O-RINGS |             | SEALS         |               |
|---------|-------------|---------------|---------------|
| MAT'L   | LID (#9)    | ELEMENT (#22) | ELEMENT (#28) |
| TFE     | P-41181-TEV | 45694         | 46646         |

| CLEANING DISC |            |                |
|---------------|------------|----------------|
| MAT'L         | ASSY (#21) | REP. KIT (#17) |
| UHMWPE        | 46741      | 46744          |
| TFE           | 46742      | 46680          |
| KYNAR         | 46743      | 46681          |
| URETHANE      | 46608      | 40706          |

| BODY ASSEMBLY  |           |
|----------------|-----------|
| ORIENTATION    | ASSY (#1) |
| 1.5" NPT OPP   | 45437     |
| 1.5" NPT S.S.  | 45453     |
| 1.5" ANSI OPP  | 45442     |
| 1.5" ANSI S.S. | 45441     |
| 2" NPT OPP     | 45452     |
| 2" NPT S.S.    | 45451     |
| 2" ANSI OPP    | 45440     |
| 2" ANSI S.S.   | 45438     |



NOTES:  
 1. ITEM #21 CONTAINS ITEMS 17-20.  
 2. ITEM #17 CONTAINS  
 (1) CLEANING DISC  
 (1) SPRING  
 (4) SCREWS  
 (4) NUTS  
 3. REPAIR KIT FOR #30 - 46724 (VITON)  
 #5 - 45663

| DWG REF | QTY | PART NO. / DWG | PART DESCRIPTION                |
|---------|-----|----------------|---------------------------------|
| 49      | 1   | 60007          | BRKT, TAG DCF SERIAL            |
| 48      | 1   | 45407          | SEAL KIT, TEFLON FOR FLUIDSEAL  |
| 47      | 1   | 47455          | RING, LANTERN DCF-1600 2-PC FS  |
| 46      | 1   | 47459          | FLUIDSEAL ASSY, DCF-1600 2-PC   |
| 45      | 4   | 45461          | BOLT, 5/16-18 X 5" SS4          |
| 44      | 4   | 45456          | STANDOFF, DCF-800 TEF LID F.S.  |
|         | 2   | 45490          | PACKING, VIT Z 1" X 1-1/2"      |
| 43      | 1   | 45407          | SEAL KIT, TEFLON FOR FLUIDSEAL  |
|         | 1   | 45406          | PACKING, URETHANE / FLUIDSEAL   |
| 42      | 1   | 42904          | WHEEL, PACKING DCF-1600 THREAD  |
| 41      | 4   | P-20762-BRZ    | ELBOW, 1/4 NPTE 45 FLARE 90DEG  |
| 40      | 4   | 45455          | BOLT, 5/16-18 X 4" SS4          |
| 39      | 1   | 47569          | DUAL, RETRO ASSY DCF-800 T 316  |
|         | 1   | 47568          | DUAL, RETRO ASSY DCF-800-T ALU  |
| 38      | 4   | 45445          | STANDOFF, DCF-800 TEFLON LID    |
| 37      | 1   | 45443          | LID, 1" ACT. DCF-800 T O-RING   |
|         | 1   | 45499          | KIT, PACKING, VIT 5/8" X 1"     |
| 36      | 1   | 42957          | KIT, PACKING, URE V 5/8" X 1"   |
|         | 1   | 42956          | KIT, PACKING, TFE V 5/8" X 1"   |
| 35      | 1   | 42903          | WHEEL, PACKING DCF-800 THREAD   |
| 34      | 2   | P-20763-BRZ    | ELBOW, 3/8 NPTE 45 FLARE 90DEG  |
| 33      | 4   | 47574          | WASHER, 5/16" SAE FLAT SS6      |
| 32      | 4   | P-12375-SS6    | WASHER, 5/16 LOCK               |
| 31      | 4   | 45457          | BOLT, 5/16-18 X 2-3/4" SS4      |
| 30      | 1   | 46690          | ACTUATOR, 3.25" X 11.5" ST VIT  |
| 29      | 1   | 46217          | PULLER, ELEMENT DCF-800         |
| 28      | 1   | SEE CHARTS     | ELEMENT SEAL / O-RING           |
| 27      | 1   | 45968          | RING, RET ASSY, ELMT SEAL TABS  |
| 26      | 8   | 46653          | SCREW 10-24 X 1/2 HEX HD SS6    |
| 25      | 1   | 63068          | RING, COMP ASSY DCF-800 DP      |
| 24      | 4   | 63078          | SCREW, 10-24 1/4X1 SHDR SOC SS6 |
| 23      | 1   | SEE CHARTS     | ELEMENT, DCF-800                |
| 22      | 2   | SEE CHARTS     | O-RING, ELEMENT DCF-800         |
| 21      | 1   | SEE CHARTS     | CLEANING DISC, ASSY DCF-800     |
| 20      | 2   | 45539          | PLATE, DCTR DCF-800 TOP L2/3    |
| 19      | 1   | 42925          | ADAPTOR, DCTR DCF4/800 L2/3 V   |
| 18      | 4   | 45542          | SPACER, DOCTOR DCF-800          |
| 17      | 1   | SEE CHARTS     | KIT, DISC, REPAIR DCF-800       |
| 16      | 1   | P-10339-SS6    | PLUG, PIPE 1/4"                 |
| 15      | 1   | 45458          | EXTENSION, DOCTOR, DCF-800      |
| 14      | 2   | 45925          | SCREW, 5/16-18 X 3/4 SOCKET S   |
| 13      | 2   | 45444          | BAR, COMPRESSOR DCF-800 TEFLON  |
| 12      | 4   | 45463          | STANDOFF, DCF-800 T LID S ACT.  |
| 11      | 8   | 42630          | SCREW, 7/16-14 X 1-1/4 HX HD    |
| 10      | 1   | 45460          | LID, 5/8" ACT. DCF-800 T O-RNG  |
| 9       | 1   | SEE CHART      | O-RING, DCF-800 TEF LID         |
| 8       | 1   | 45657          | VALVE, B 2W THD 1-1/2" 316SS    |
| 7       | 1   | 45675          | KIT, MTG 1-1/2" BV TO ACT       |
| 6       | 2   | P-20760-BRZ    | ADAPTOR, 1/4 NPT X 45 FLARE     |
| 5       | 1   | 45661          | ACTUATOR, R/P 200 LB-IN @60PSI  |
| 4       | 2   | P-10859-CST    | NUT, 1/2-13 X 5/16 THK HEX JAM  |
| 3       | 2   | P-30672-CST    | LEG ASSY, HALF, FB SE           |
| 2       | 2   | P-43853-CST    | SCREW, 1/2-13 X 1-1/2 HEX HD    |
| 1       | 1   | SEE CHART      | BODY ASSEMBLY, DCF-800          |

**EATON** EATON FILTRATION, LLC  
 RONNINGEN-PETTER PRODUCTS  
 9151 SHAWER ROAD  
 PORTAGE, MICHIGAN 49024-6798 USA

|                           |                                   |   |
|---------------------------|-----------------------------------|---|
| ENGINEERING APPROVAL      | DRAWN BY<br>B. STUCK              | TITLE<br>DCF-800 SINGLE FILTER - TEFLON DESIGN<br>REPLACEMENT PARTS |
| SALES/MKTG APPROVAL       | SCALE<br>NONE                     | DATE<br>02/09/06  |
| ENGINEERING SPECIFICATION | DATE<br>02/09/06                  | SIZE<br>C   |
|                           | DWG FILENAME<br>DCF-800-XXX-PA002 | REV<br>A  |