

DEFINED PORE SIZES		
P/N	RETENTION (MICRON)	
63089	0.001"	25
63090	0.0015"	38
63076	0.002"	50
63048	0.003"	75
63049	0.004"	100
63050	0.006"	150
63051	0.009"	230
63052	0.015"	380
63053	0.024"	610
63054	0.030"	760
63055	0.045"	1140

NON-STOCK ITEMS:
ALLOW 6-8 WEEKS
FOR DELIVERY.

SLOTTED ELEMENT SIZES		
P/N	RETENTION (MICRON)	
42631	0.0006"	15
42632	0.001"	25
40668	0.0015"	38
42633	0.002"	50
42634	0.003"	75
42635	0.004"	100
42636	0.006"	150
47332	0.007"	175
42652	0.008"	200
42637	0.009"	230
42638	0.015"	380
47341	0.024"	610
42653	0.030"	750
47331	0.045"	1125

PERFORATED ELEMENT SIZES		
P/N	RETENTION (MICRON)	
42650	0.062"	1550
47330	0.125"	3125
42661	0.250"	6250

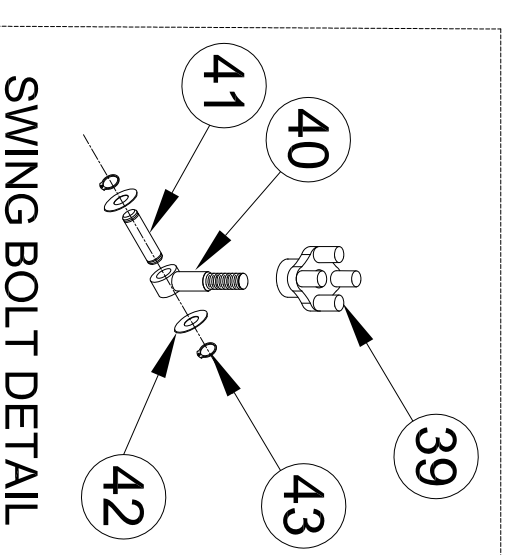
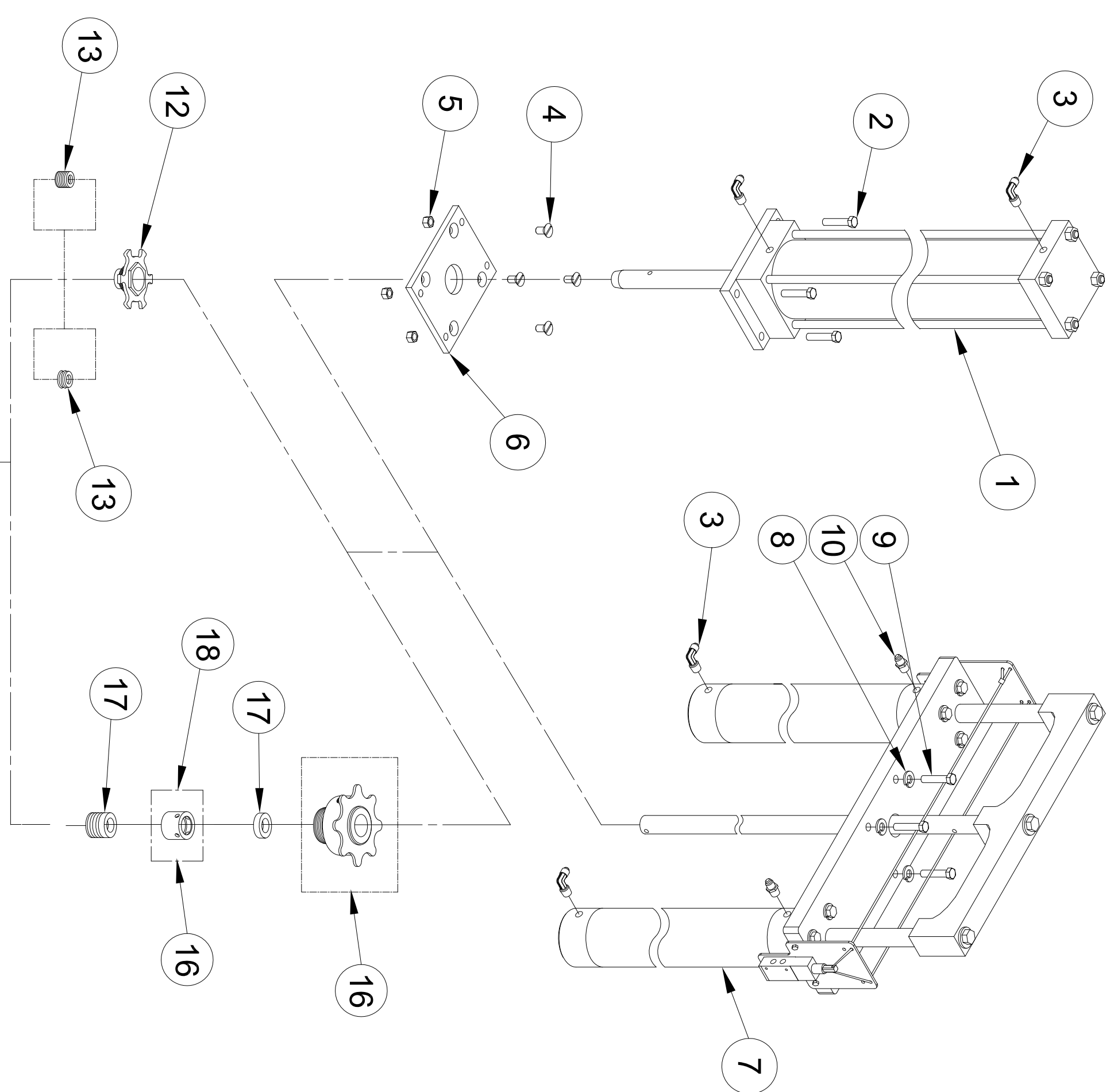
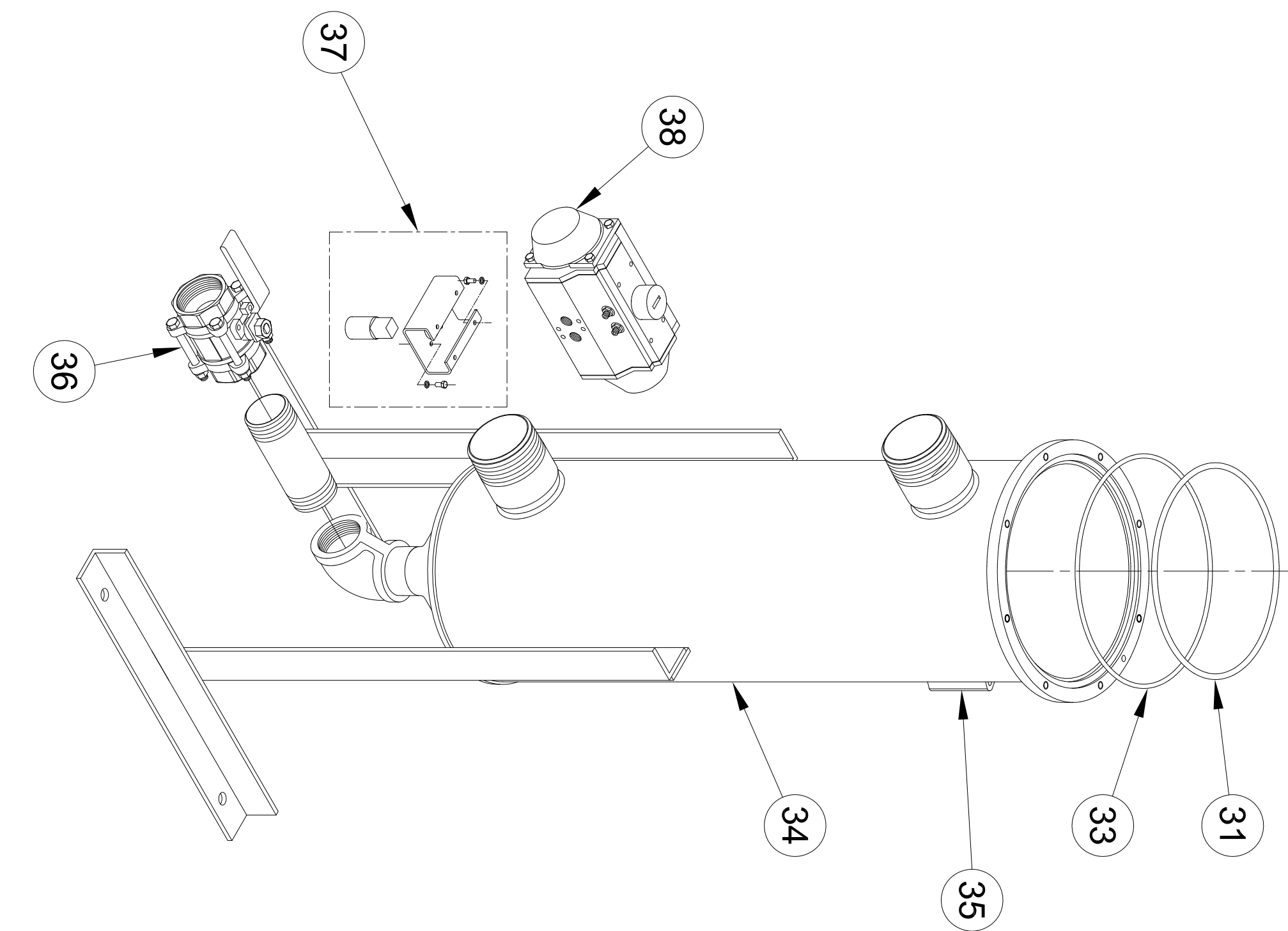
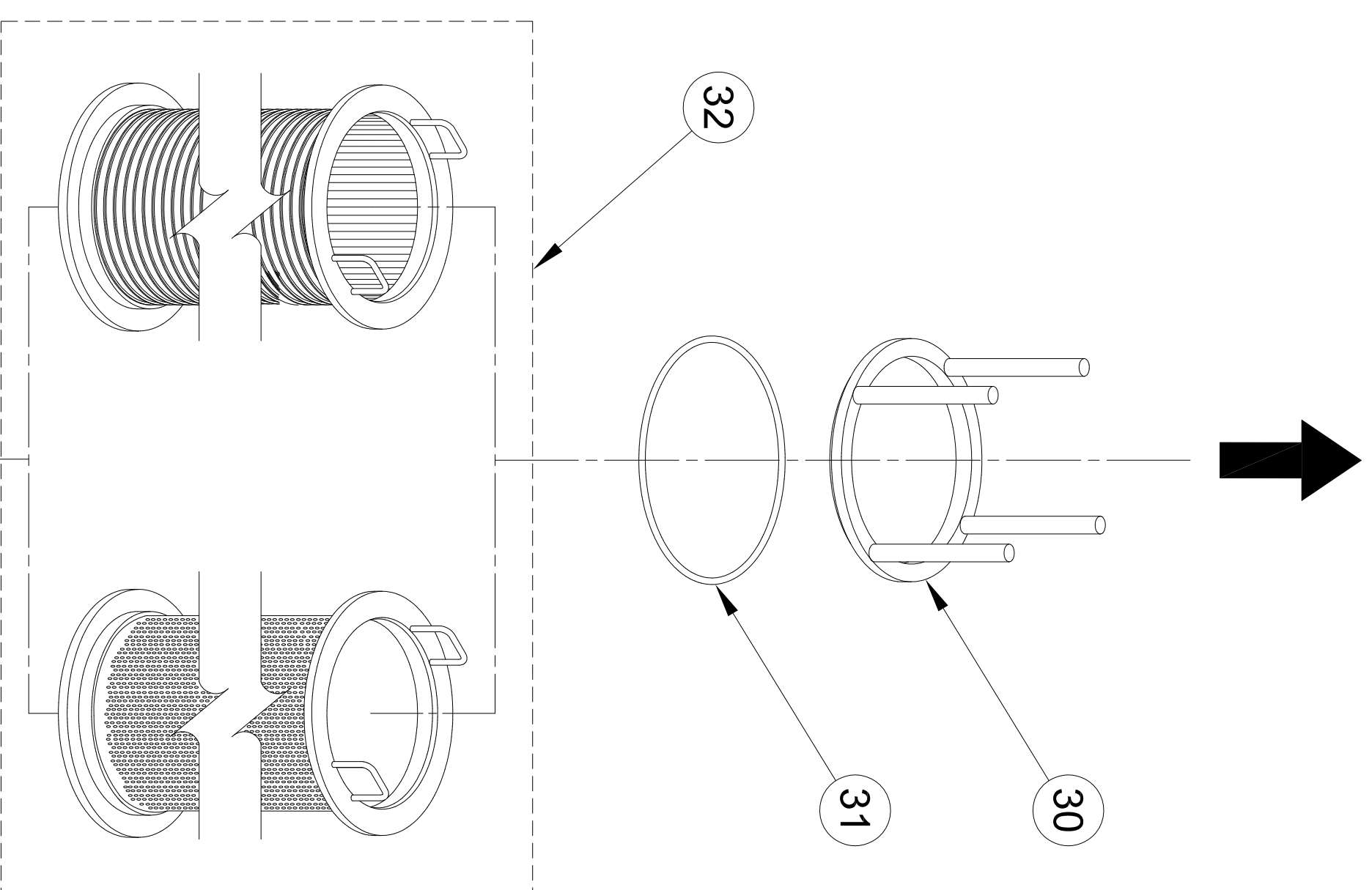
CLEANING DISC (WIDE EDGE)		
MAT'L	ASSY (#19)	REP. KIT (#20)
UHMWPE	40632	31338
KYNAR	40633	47307
TEFLON	40634	47308
NYLON	47141	40712
URETHANE	40703	40707
TEF / SOFT	45483	

O-RINGS		
MAT'L	LID ITEM (#33)	ELEMENT ITEM (#31)
VITON	42622	42626
TEFLON	42624	42628
EPT	42623	42627
BUN	42621	42625
*NIT	45421	45422

* WHITE, FDA APPROVED
FOOD GRADE.

NOTES:

- ITEM #19 CONTAINS ITEMS 20, 21 & 24-28.
- ITEM #20 CONTAINS: (1) CLEANING DISC
(1) SPRING
(8) SCREWS
(1) LOAD TOOL



REV	DATE	BY	DESCRIPTION
43	2	P-30210-SS2	RETAINER RING, 3100-50-SS2
42	2	P-40136-CST	WASHER, 1/2" FLAT TYP A SER
41	1	P-14301-SS4	PIN, CLEVIS MULTIPLEX LINKAGE
40	1	P-30223-SS4	PIN, EYEBOLT FB SE
39	1	AM-30129-SS4	NUT, FB FILTER
38	1	45475	ACT. ROTARY, JAMESBURY DCF
37	1	KIR0000029	BRKT ASSY, FLO-TITE FOR WPL250
36	1	RPV0000020	VALVE, B 2W 2" THD FULL PT SS6
35	1	60007	BRKT, TAG DCF SERIAL
34	1	40612	BODY ASSY, 180 DEG I/O
33	1	40611	BODY ASSY, SAME SIDE I/O
32	1	SEE CHART	O-RING, LID DCF-1600
31	1	SEE CHART	FILTER ELEMENT, DCF-1600
30	1	SEE CHART	O-RING, ELEMENT DCF-1600
29	1	40626	COMPRESSOR ASSY DCF-1600 316SS
28	8	P-10767-SS6	PLIERS, ASSY DCF LOAD TOOL
27	1	P-31307	*SCREW, 5/16-18X5/8 HX HD CAP
26	4	47011	SPRING, DOCTOR ASSY MECHANICAL
25	1	P-31308	SPRING, MECH DOCTOR MECHANICAL
24	1	P-31304	SPACER, DOCTOR ASSY MECHANICAL
23	1	P-31303	PLATE, DOCTOR MECH TOP RAW
22	1	P-41289-SS6	*NUT, 1/4-20 SELF LOCKING DCF
21	1	P-30886-SS6	*SCREW, 1/4-20 X 2 HEX HD CAP
20	1	40629	ADAPTER, DISC/RSD DCF-1600 316
19	1	SEE CHART	KIT, REPAIR DCF-1600 DISC ASSY
18	1	SEE CHART	DISC ASSEMBLY, DCF-1600
17	1	47455	RING, LANTERN DCF-1600 2-PC FS
16	1	45407	FLUIDSEAL PACKING / TEFLON
15	1	RP50000038	FLUIDSEAL PACKING / VITON
14	1	45406	FLUIDSEAL PACKING / URETHANE
13	8	42630	FLUIDSEAL ASSY, DCF-1600 2-PC
12	1	P-10336-BRZ	*SCREW, 7/16-14 X 1-1/4 HEX HD
11	1	45498	PLUG, PPE 3/4" SQ HEAD
10	1	42958	KIT, PACKING, VIT Z 1"X1-1/2
9	1	42958	PKG, URE SP DCF-1600 W/INST
8	1	42919	PKG, TEFLON VEE DCF-1600 W/INST
7	1	42904	WHEEL, PACKING DCF-1600 THREAD
6	1	42909	LID, DCF-1600 "V" MACH 316L SS
5	1	P-10694-SS4	ADAPTER, 3/8 NPT X 45 FLARE
4	4	46412	SCREW, 3/8-16X1-1/2 HEX HD 316
3	2	P-20763-BRZ	*WASHER, LOCKING 3/8"
2	4	47510	DUAL, RETRO ASSY DCF-1600 SS6
1	1	40652	DUAL, RETRO ASSY DCF-1600 ALU
			PLATE, MFG 4" ACT DCF-1600
			*NUT, 3/8-16 LOOKING W/NYL INS
			*SCREW, 3/8-16X3/4 FLTHD SLTCA
			ELBOW, 3/8 NPT X 45 FLARE 90DEG
			SCREW, 3/8-16X1-1/2 HEX HD 316
			ACTUATOR, 4" X 24-3/8" ST VIT



ENGINEERING APPROVAL	SALES/MKTG APPROVAL
DATE: 05/24/05	SCALE: NONE
SIZE: D	DWG FILENAME: DCF-1600-X-PA002
REV: B	

EATON FILTRATION
TINTON FALLS, NEW JERSEY, USA
GALESBURG, MICHIGAN, USA

REPLACEMENT PARTS
DCF-1600 / 1600 TWIN

THIS DRAWING AND ALL INFORMATION THEREON IS THE PROPERTY OF EATON CORPORATION. IT IS CONFIDENTIAL AND PROPRIETARY AND MUST NOT BE MADE PUBLIC OR REPRODUCED IN ANY MANNER WITHOUT THE WRITTEN PERMISSION OF EATON. THIS DRAWING IS LOANED SUBJECT TO RETURN ON DEMAND TO THE INTERESTS OF EATON FILTRATION, LLC.