

DO NOT SCALE DRAWING

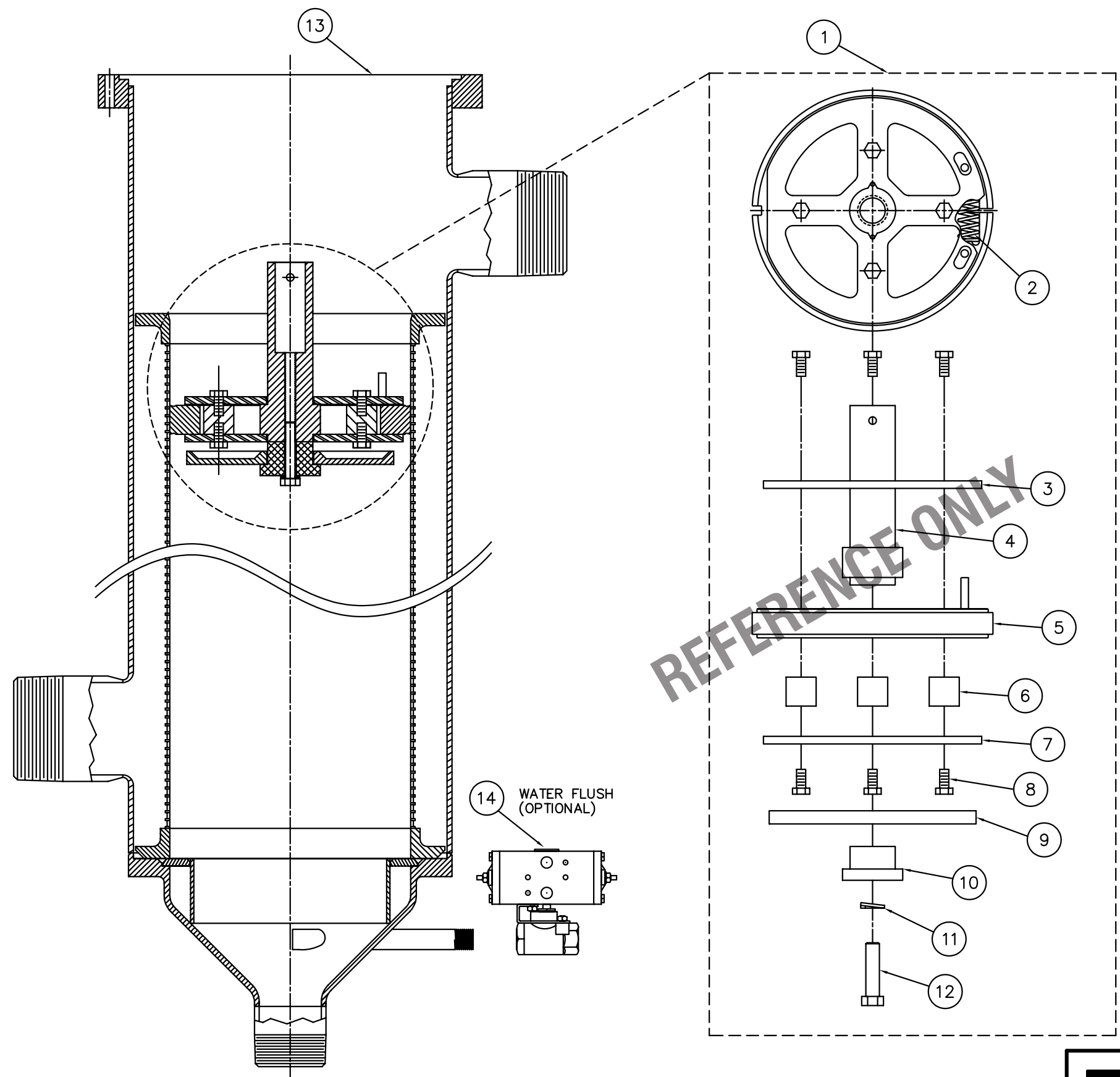
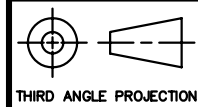


TABLE 1: CLEANING DISC & DISC ASSEMBLY

MATERIAL	DISC	ASSEMBLY
UHMWPE	41341	47614
KYNAR	46838	47615
TEFLON	46837	47616
URETHANE	40701	47618
NYLON	40700	47617
TEFLON/SOFT	46837	47629

TABLE 2: BODY ASSEMBLY

DESCRIPTION	P/N
DCF-1600 SP, 3" NPT S.S. I/O	47192
DCF-1600 SP, 3" NPT OPP I/O	47193
DCF-1600 SP, 3" ANSI S.S. I/O	47194
DCF-1600 SP, 3" ANSI OPP I/O	47195
DCF-1600 SP, 3" DIN S.S. I/O	47189
DCF-1600 SP, 3" DIN OPP I/O	47190

14	1	46027	VALVE, 3/8 W/ACTUATOR 316SST
13	1	SEE TABLE 2	BODY ASSY, DCF-1600 STEALTH
12	1	P-14539-SS6	SCREW, 3/8-16X1-3/4 HX HD CAP
11	1	P-35127-SS6	WASHER, LOCKING 3/8"
10	1	46043	RETAINER, CHECK VLVE DCF-1600SP
9	1	46042	PLATE, CHECK VALVE DCF-1600 SP
8	8	P-10767-SS6	SCREW, 5/16-18X5/8 HEX HD CAP
7	1	P-31304	PLATE, DOCTOR MECH BOTTOM
6	4	P-31308	SPACER, DOCTOR ASSY MECHANICAL
5	1	SEE TABLE 1	DOCTOR, DCF-1600 MECHANICAL
4	1	47619	ADAPTER, DRIVE DCF1600 STEALTH
3	1	P-31303	PLATE, DOCTOR MECH TOP RAW
2	1	47011	SPRING, MECH DOCTOR DCF-1600
	1	P-31307	SPRING, DOCTOR ASSY MECHANICAL
1	1	SEE TABLE 1	DISC ASSY, DCF-1600 STEALTH
DWG REF	QTY	PART NO./ DWG	PART DESCRIPTION

NOTE:
 1. DIAGRAM REPRESENTS DCF-1600 STEALTH PURGE UNIT.
 2. REQUIREMENTS FOR WATER FLUSH SUPPLY:
 5 GPH MINIMUM FLOWRATE (19 L/HOUR)
 FLUSH WATER INLET PRESSURE NO GREATER THAN PROCESS PRESSURE

EATON EATON FILTRATION, LLC
 RONNINGEN-PETTER PRODUCTS
 9151 SHAVER ROAD
 PORTAGE, MICHIGAN 49024-6798 USA

THIS DRAWING AND ALL INFORMATION THEREON IS THE PROPERTY OF EATON CORPORATION. IT IS CONFIDENTIAL AND MUST NOT BE MADE PUBLIC. THIS DRAWING IS LOANED SUBJECT TO RETURN ON DEMAND, AND IS NOT TO BE USED DIRECTLY OR INDIRECTLY, IN ANY WAY DETRIMENTAL TO THE INTERESTS OF EATON FILTRATION, LLC.

ENGINEERING APPROVAL	DRAWN BY M. DESJARDINS	TITLE REPLACEMENT PARTS DCF-1600 STEALTH PURGE			
SALES/MKTG APPROVAL	SCALE NONE	DATE 05/24/05	SIZE B	DWG FILENAME DCF-1600-X-PA001	REV A
	ENGINEERING SPECIFICATION				