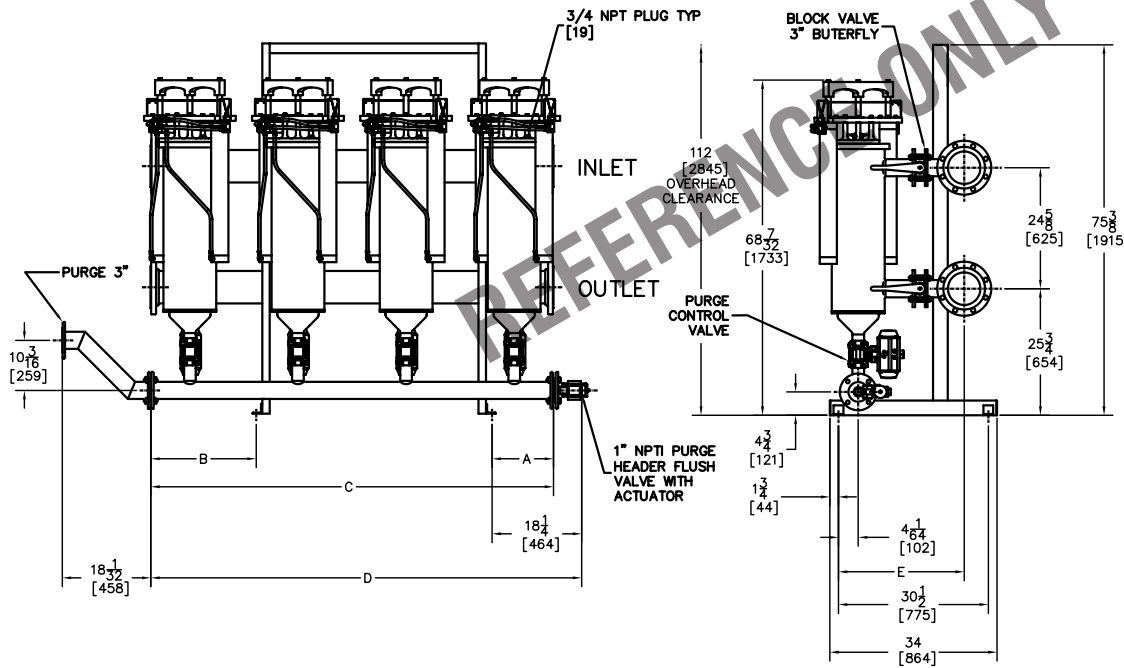


MODEL	DIM "A"	DIM "B"	DIM "C"	DIM "D"	DIM "E"	DIM "F"	IN/OUT HDR SIZE
DCF-1600-2	4 [102]	7-1/4 [184]	53-1/2 [1359]	59-1/4 [1505]	24-1/2 [622]	42-1/4 [1070]	4"
DCF-1600-3	12-1/2 [318]	21-3/8 [543]	59-7/8 [1521]	65-5/8 [1667]	24-1/2 [622]	26 [660]	4"
DCF-1600-4	12-1/2 [318]	21-3/8 [543]	81-7/8 [2080]	87-5/8 [2226]	25-9/16 [649]	48 [1219]	6"
DCF-1600-5	12-1/2 [318]	21-3/8 [543]	103-7/8 [2639]	109-5/8 [2784]	25-9/16 [649]	70 [1778]	6"
DCF-1600-6	12-1/2 [318]	21-3/8 [543]	125-7/8 [3197]	131-5/8 [3343]	26-9/16 [675]	92 [2337]	8"
DCF-1600-7	12-1/2 [318]	21-3/8 [543]	147-7/8 [3756]	153-5/8 [3902]	28-9/16 [735]	114 [2896]	8"
DCF-1600-8	12-1/2 [318]	21-3/8 [543]	169-7/8 [4315]	175-5/8 [4461]	27-5/8 [702]	136 [3454]	10"



- NOTES:
- INLET AND OUTLET PROCESS CONNECTIONS ARE RAISED FACE LAP-JOINT TYPE FLANGES WITH GALVANIZED CARBON STEEL BACK-UP RINGS DRILLED ANSI 150# OR DIN ND16 STANDARD.
  - HEADER CONNECTIONS CAN BE LOCATED ON EITHER SIDE OF THE SYSTEM ASSEMBLY. BLIND FLANGES (SUPPLIED BY OTHERS) ARE REQUIRED FOR THE OPPOSITE END.
  - ALL DIMENSIONS SHOWN IN INCHES WITH MILLIMETER EQUIVALENTS IN BRACKETS [ ].
  - MAXIMUM ALLOWABLE PRESSURE OF UNIT IS 150 PSI [10.3 BAR]. MINIMUM INLET PRESSURE IS 30 PSI [2.1 BAR].
  - MINIMUM WATER PRESSURE REQUIRED TO FLUSH PURGE HEADER IS 30 PSI [2.1 BAR]. MAXIMUM ALLOWABLE PRESSURE IS 150 PSI [10.3 BAR].
  - INLET AIR CONNECTION IS 3/8" NPTI. SUPPLY AIR IS TO BE CLEAN, DRY, NON-LUBRICATED AIR. 80 PSI [5.5 BAR] MIN., 120 PSI [8.3 BAR] MAX. AT 5.0 CFM [ 2.4 l/sec.] PER FILTER STATION.
  - INPUT POWER FOR AUTOMATED DIGITAL CONTROL IS 120/240V 50/60Hz.
  - FOR FOUNDATION DETAILS REFER TO DRAWING No. E9-54BPN.
  - FOR CONTROL PANEL LAYOUT DETAILS REFER TO DRAWING No. E9-54CPN.
  - FOR ELECTRICAL/PNEUMATIC SCHEMATIC DETAILS REFER TO DRAWING No. E9-54DPN.



EATON FILTRATION, LLC  
 RONNINGEN-PETTER PRODUCTS  
 9151 SHAVER ROAD  
 PORTAGE, MICHIGAN 49024-6798 USA

THIS DRAWING AND ALL INFORMATION THEREON IS THE PROPERTY OF EATON CORPORATION. IT IS CONFIDENTIAL AND MUST NOT BE MADE PUBLIC. THIS DRAWING IS LOANED SUBJECT TO RETURN ON DEMAND, AND IS NOT TO BE USED DIRECTLY OR INDIRECTLY, IN ANY WAY DETRIMENTAL TO THE INTERESTS OF EATON FILTRATION, LLC.

ENGINEERING APPROVAL	DRAWN BY M. DESJARDINS	TITLE DCF-1600 MULTIPLEX W/TWIN ACTUATOR DESIGN GENERAL ARRANGEMENT			
SALES/MKTG APPROVAL	SCALE NONE	ENGINEERING SPECIFICATION	DATE 05/16/05	SIZE A	DWG FILENAME DCF-1600-TWPL-GA001
					REV A