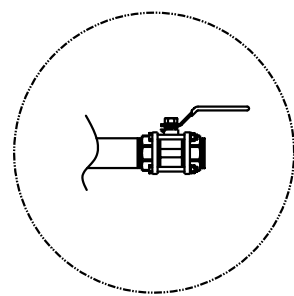
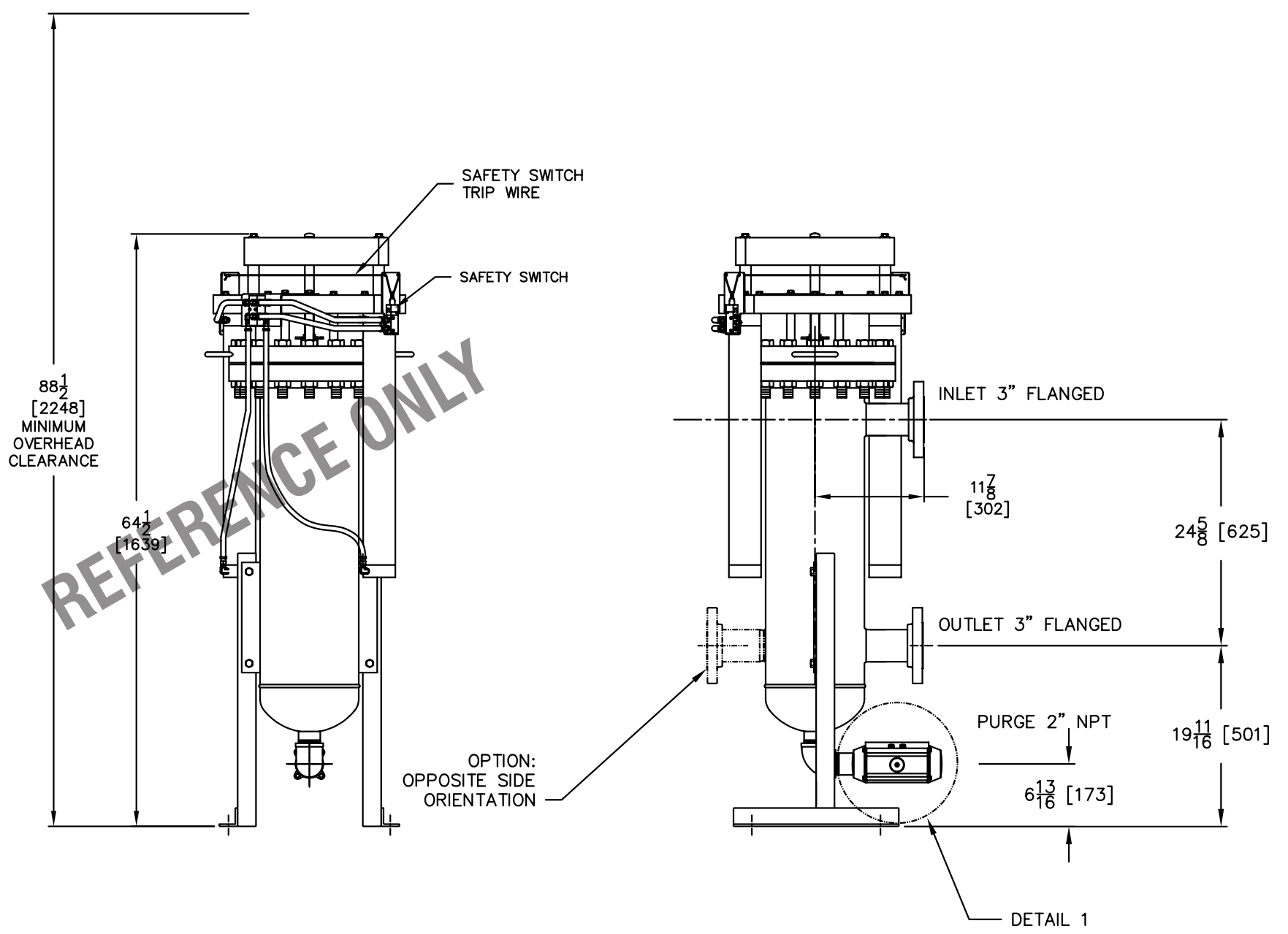


FILTER UNIT STAND FOUNDATION PLAN



DETAIL 1: MANUAL PURGE VALVE



- NOTES:
1. ALL DIMENSIONS SHOWN IN INCHES WITH MILLIMETER EQUIVALENTS IN BRACKETS [ ].
  2. FILTER ELEMENT IS DESIGNED TO WITHSTAND 110 PSID (7.58 BAR) DIFFERENTIAL PRESSURE.
  3. DESIGN PRESSURE OF UNIT: 300 PSI (21 BAR) @ 250 °F (121 °C)
  4. INLET/OUTLET PROCESS CONNECTIONS ARE 3" ANSI 300# FLANGED. PROCESS PURGE CONNECTION IS 2" NPT.
  5. INLET AIR CONNECTION IS 1/4" NPTI. SUPPLY AIR IS TO BE CLEAN, DRY, NON-LUBRICATED AIR. 60 PSI MIN [4.13 BAR] 120 PSI MAX [8.27 BAR]

REF	QTY	PART NO./DWG	DESCRIPTION
PART LIST			

**EATON** EATON FILTRATION, LLC  
 RONNINGEN-PETTER PRODUCTS  
 9151 SHAVER ROAD  
 PORTAGE, MICHIGAN 49024-6798 USA

THIS DRAWING AND ALL INFORMATION THEREON IS THE PROPERTY OF EATON CORPORATION. IT IS CONFIDENTIAL AND MUST NOT BE MADE PUBLIC. THIS DRAWING IS LOANED SUBJECT TO RETURN ON DEMAND, AND IS NOT TO BE USED DIRECTLY OR INDIRECTLY, IN ANY WAY DETRIMENTAL TO THE INTERESTS OF EATON FILTRATION, LLC.

ENGINEERING APPROVAL	DRAWN BY R. BUFFA	TITLE DCF-1600 SINGLE FILTER W/ TWIN ACTUATOR 300 PSI HIGH PRESSURE DESIGN			
SALES/MKTG APPROVAL	SCALE NONE	DATE 05/17/05	SIZE B	DWG FILENAME DCF-1600-HP-TWSI-GA001	REV A
	ENGINEERING SPECIFICATION				