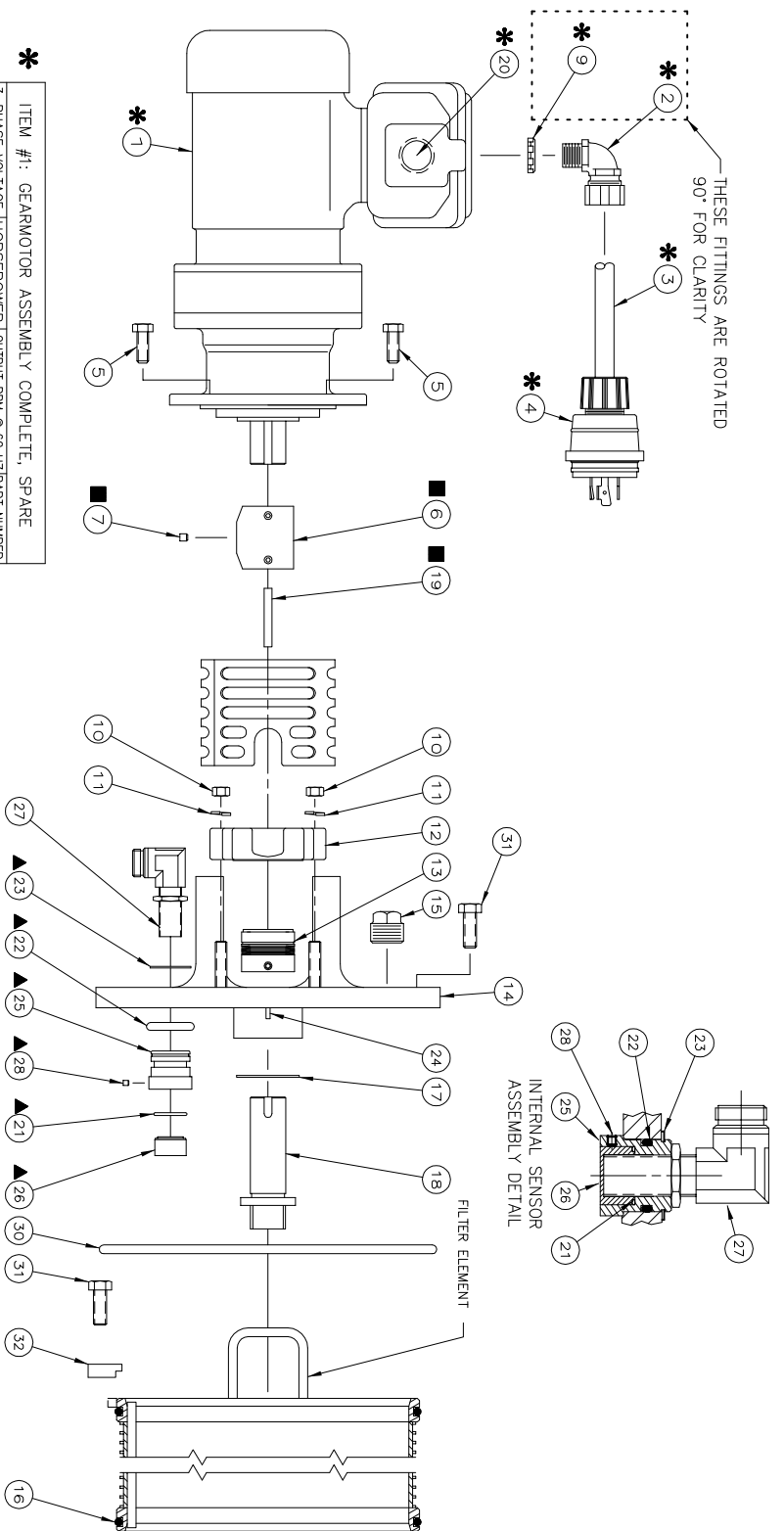


THESE FITTINGS ARE ROTATED 90° FOR CLARITY



**\* ITEM #1: GEARMOTOR ASSEMBLY COMPLETE, SPARE**

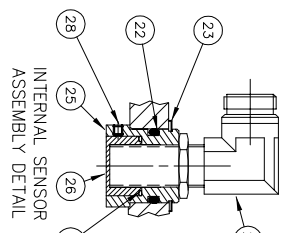
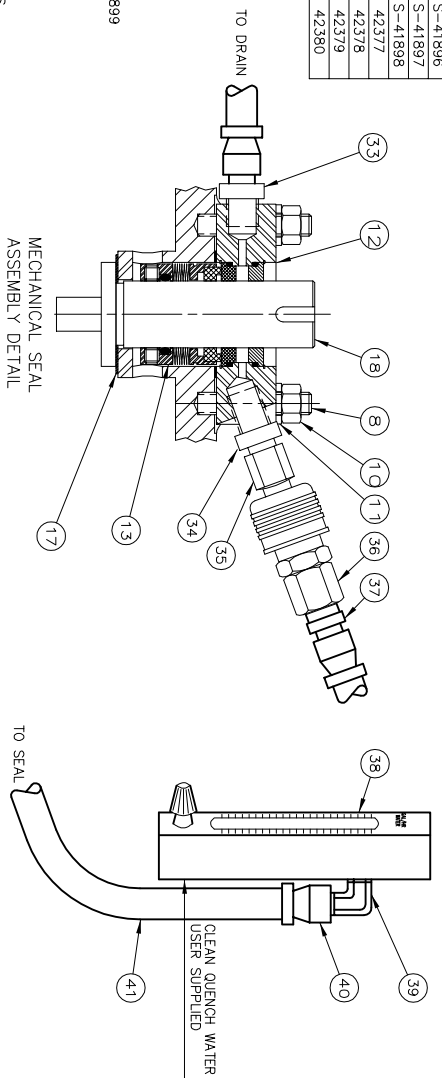
3-PHASE VOLTAGE	HORSEPOWER	OUTPUT RPM @ 60 HZ	PART NUMBER
220 50/60 HZ	1/4	14,700	S-41895
380 50/60 HZ	1/4	14,700	S-41896
440 50/60 HZ	1/4	14,700	S-41897
575 50/60 HZ	1/4	14,700	S-41898
220 50/60 HZ	1/2	29,700	42377
380 50/60 HZ	1/2	29,700	42378
440 50/60 HZ	1/2	29,700	42379
575 50/60 HZ	1/2	29,700	42380

**■ KIT, COUPLING MOTOR/SHAFT**

ANSI	METRIC
S-42343	47324

- \* INCLUDED IN GEARMOTOR ASSEMBLY COMPLETE, SPARE**
- ▲ INCLUDED IN KIT, REPAIR SEAL, PROXIMITY SWITCH P/N S-41899**
- INCLUDED IN KIT, COUPLING MOTOR/SHAFT**

NOTE:  
 1. FOR MECHANICAL INSTALLATION AND OPERATION INSTRUCTIONS REFER TO R-P INSTRUCTION P/N 42354.



QTY	PART NO./DIM	PART DESCRIPTION
41	P-20765	HOSE, 1/4" NEOPRENE
40	P-20764-BRZ	FITTING, SWIVEL, 45 FLARE
39	P-20766-BRZ	ELBOW, 1/8" NPT X 45 FLARE
38	42351	METER, FLOW 4-34 GAL./HR.
37	P-20760-BRZ	ADAPTOR, 1/4 NPT X 45 FLARE
36	P-10941-BRZ	ADAPTOR, 1/4NPT-1/4" HOSE CPL
35	P-10938-BRZ	ADAPTOR, 1/4NPT-1/4M HOSE CPL
34	P-35123-BRZ	ADAPTOR, 3/8 NPT X 1/4 NPT
33	P-21713-BRZ	ADAPTOR, 3/8NPT X 45 FLARE
32	P-41953	CAMP. ELEMENT DCF CAST
31	P-10774-SS6	SCREW, 3/8-16X1 HEX HD CAP
30	P-42225	SOREW, M10 X 1.5 X 25MM LONG
29	S-41181-EPT	O-RING PKG, DCF UID 10 PC EPT
28	S-41899	KIT, REP SEAL PROX SW DCF 1/S
27	P-41707-SS8	SOREW, 8-32 X 3/8SCCHD CAP P
26	P-41706	CAP, PROXIMITY SWITCH DCF 1/S
25	P-41509	RECEIVER, PROXIMITY SW DCF 1/S
24	P-41710-SS6	PN, DOWEL, 1/4 X 7/8 DCF UID
23	P-56733-SS2	RETAINING RING, 4100-125
22	P-41709-BUN	O-RING, PROX SW RECEIVER/UID
21	P-41708-BUN	O-RING, PROX SW CAP/RECEIVER
20	P-41509	SUPPRESSOR, VOLTAGE SURGE
19	W-41437-SS6	KEY, 1/4 SQ X 1-7/8 LG DCF
18	P-42101	DRIVE SHAFT, DCF F/ MECH SEAL
17	S-41220	WASHER PKG, THRUST DCF TOP 9H0
16	S-41180-EPT	O-RING PKG, DCF ELMT 10 PC EPT
15	P-10356-BRZ	PLUG, PIPE 3/4" SO HEAD
14	42350	UID, DCF-2000 LOC MACH
13	42344	UID, DCF-2000 LOC MACH METRIC
12	42344	SEAL, MECHANICAL ROTARY CARBULE
11	P-35127-SS4	WASHER, LOOKING 3/8
10	P-19809-SS6	NUT, LOOKING M10 304SS
9	P-42244	NUT, M10 X 1.5 ST1E 1 304SS
8	P-10174-SS4	BOLT, 1/2 NPT LOCK SEALING
7	46292	BOLT, STUD M10 X 1.5 X 55MM SS6
6	46669	SOREW, 5/16-18 X .25 SOC SET
5	46670	SOREW, M8 X 1.25 X 8MM LONG
4	P-10774-SS4	CPLG, MTR/SHAFT DCF-2000
3	P-41294	CABLE, MOTOR DCF 600V
2	P-41296	CABLE, MOTOR DCF 480V
1	42358	ELBOW, 1/2 NPT-5/8 SO CABLE
1	P-21179	ELBOW, 1/2 NPT-9/16 SO CABLE
1	SEE CHART	GEARMOTOR ASSEMBLY, COMPLETE

**HYDRA-MOTION**  
 DESIGN CENTER  
 15400 W. 25TH AVENUE  
 BOULDER, COLORADO 80504 USA

**ATON**  
 DESIGN CENTER  
 15400 W. 25TH AVENUE  
 BOULDER, COLORADO 80504 USA

DESIGN BY: M. DESJARDINS  
 SCALE: NONE  
 DATE: 03/26/05

DCP-2000 DRIVE ASSEMBLY  
 W/ MECHANICAL SEAL (SPARE PARTS)

DCP-2000-X-PA001