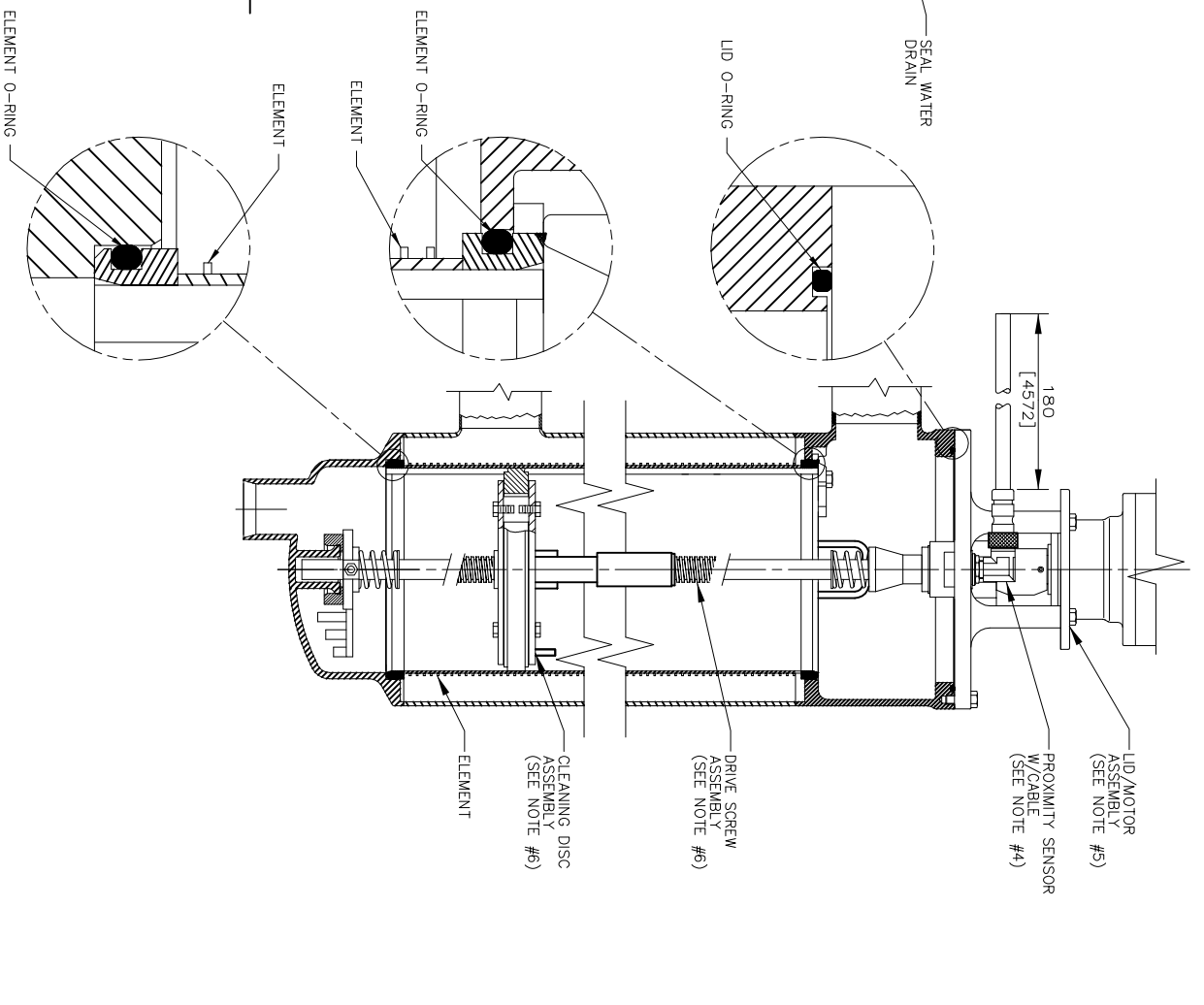
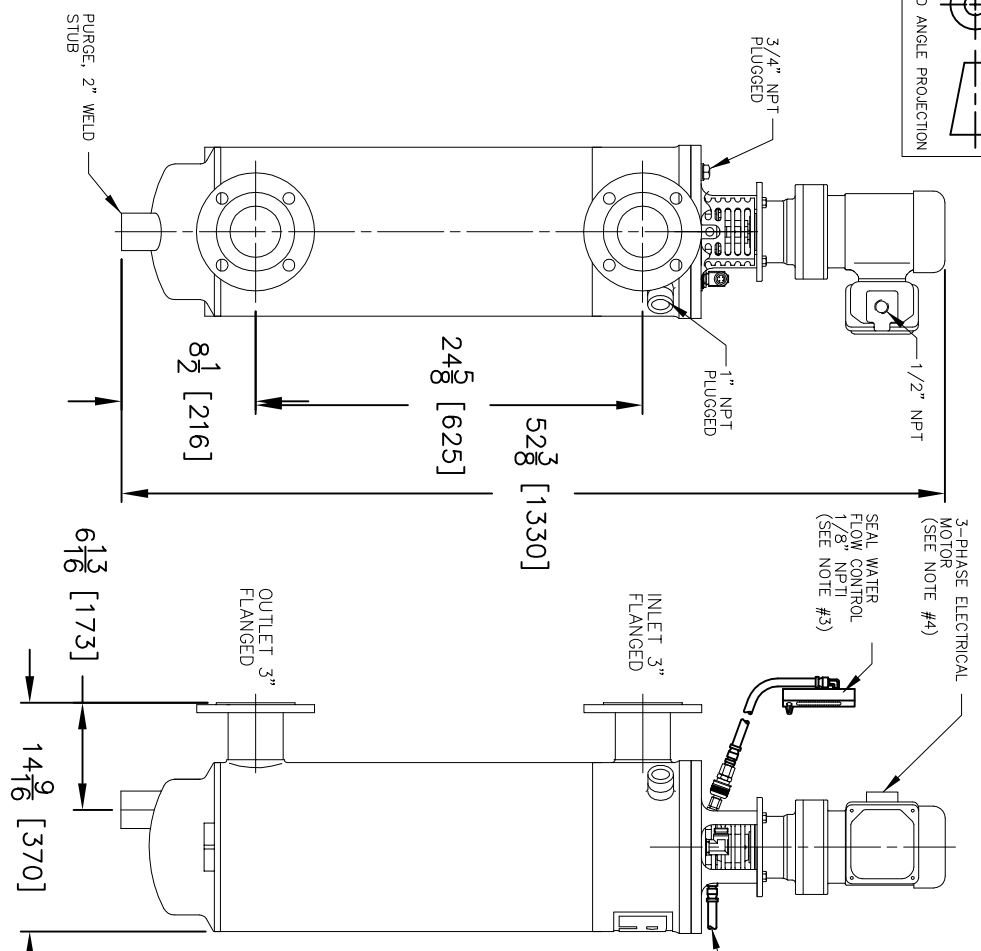


THIRD ANGLE PROJECTION



REVISIONS

- NOTES:
1. PROCESS FLANGE CONNECTIONS ARE LAP-JOINT TYPE WITH ZINC PLATED CARBON STEEL BACK-UP RINGS DRILLED TO EITHER ANSI CLASS 150# STANDARD OR DIN ND16.
 2. ALL DIMENSIONS ARE IN INCHES WITH MILLIMETER EQUIVALENTS IN BRACKETS [].
 3. MAXIMUM ALLOWABLE PRESSURE: 150 PSI (10.3 BAR). MINIMUM ALLOWABLE PRESSURE: 30 PSI (2.1 BAR). MECHANICAL SEAL WATER QUENCH SYSTEM REQUIRES 5-7 GPH (18.9-28.6 L/HR) CONSTANT FLOW OF WATER TO THE SEAL.
 4. ELECTRICAL REQUIREMENTS: 220, 380, 440 OR 575 VAC; 3-PHASE 50 OR 60 HERTZ FOR MOTOR; 10-30 VDC NPN OR PNP; 20-250 VAC N.O. 1-PHASE FOR PROXIMITY SENSOR.

<p>ENGINEERING APPROVAL</p> <p>SALES/MKTG APPROVAL</p>	<p>DRAWN BY M. DESJARDINS</p> <p>SCALE NONE</p> <p>ENGINEERING SPECIFICATION</p>	<p>TITLE</p> <p>DCF-2000 BASIC SINGLE FILTER</p>	<p>DATE 05/26/05</p> <p>SIZE A</p> <p>DWG FILENAME DCF-2000-SNG-GA002</p> <p>REV A</p>
--	--	--	--

EATON
EATON FILTRATION
DESIGN CENTER
ISELIN, NEW JERSEY, USA
PORTAGE, MICHIGAN, USA

THIS DRAWING AND ALL INFORMATION THEREON IS THE PROPERTY OF EATON CORPORATION. IT IS CONFIDENTIAL AND PROPRIETARY AND MUST NOT BE MADE PUBLIC OR COPIED IN WHOLE OR IN PART WITHOUT THE EXPRESS WRITTEN PERMISSION OF EATON CORPORATION. ANY UNAUTHORIZED REPRODUCTION OR DEMAND AND IS NOT TO BE USED IN ANY MANNER THAT MAY BE DETRIMENTAL TO THE INTERESTS OF EATON FILTRATION, LLC.