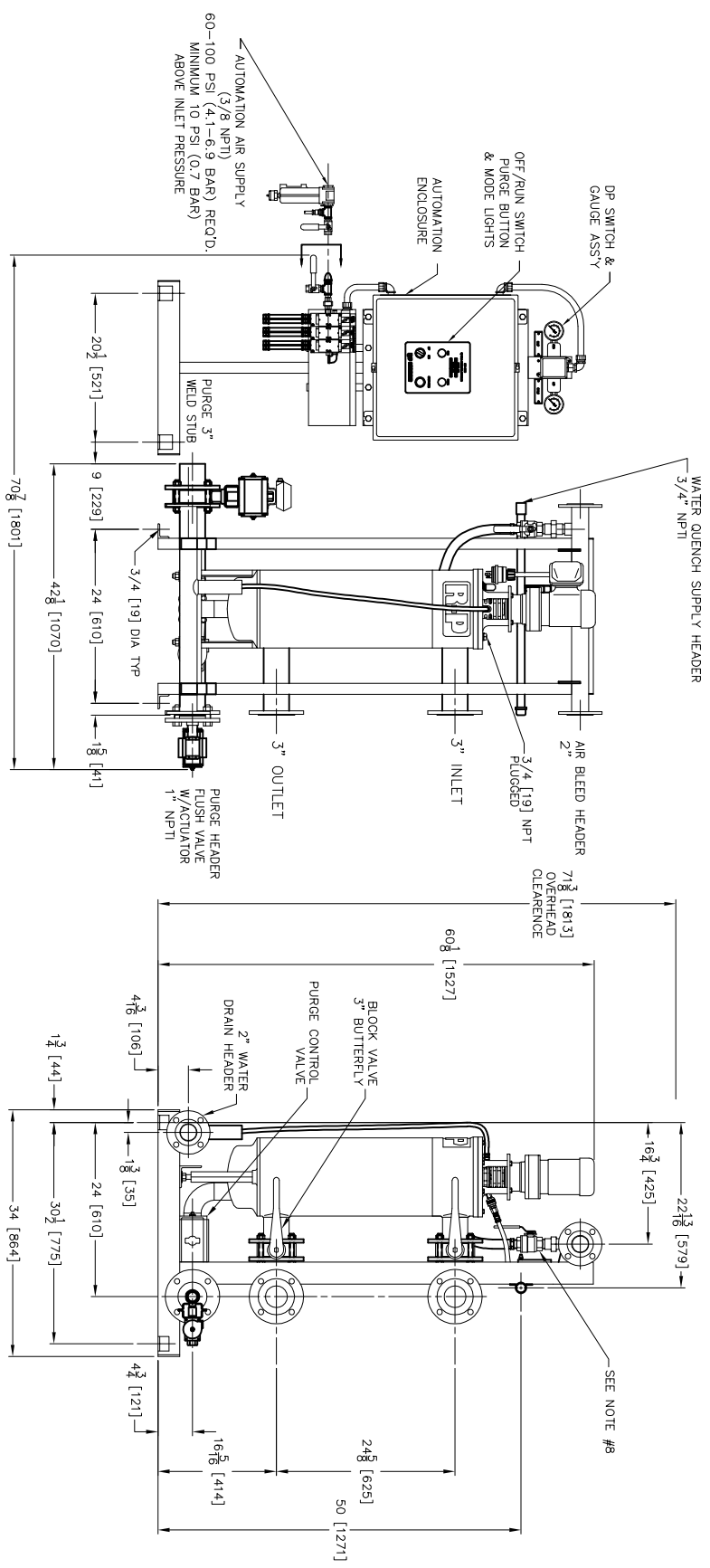


THIRD ANGLE PROJECTION



NOTES:

1. INLET, OUTLET, AIR BLEED HEADER CONNECTION, ARE LWP-JOINT TYPE ZINC PLATE FINISHED. END FLANGES FINISH TO EITHER ANSI CLASS 150 OR DIN 1506 STANDARD.
2. PROCESS CONNECTIONS CAN BE LOCATED ON EITHER SIDE OF SYSTEM ASSEMBLY AND ARE ELBOWED INTO THE STATION. THE AUTOMATION CONTROL PANEL IS LOCATED AT THE OPPOSITE END OF THE UNIT IN RELATION TO THE INLET.
3. ALL DIMENSIONS ARE IN INCHES WITH MILLIMETER EQUIVALENTS IN BRACKETS []
4. MAXIMUM ALLOWABLE PRESSURE: 30 PSI (2.1 BAR)
5. MINIMUM ALLOWABLE PRESSURE: 150 PSI (10.3 BAR)
6. MOTOR REQUIRE LUBRICANTS PER 2-150 PSI (10.3 BAR) WATER
7. MECHANICAL SEAL WATER QUENCH SYSTEM REQUIRES 5-7 GALLONS/HR (18.9-26.6 L/HR)
8. AIR BLEED HEADER UTILIZES A 1" HOSE CONNECTED TO THE UPPER PORTION OF THE AIR BLEED HEADER. AIR BLEED HEADER MUST BE AT LEAST 10" FROM PRE-PROGRAMMED LOCAL CONTROLLER. CONTROLLER REQUIRES A SINGLE PHASE VOLTAGE SOURCE DELIVERING 110 OR 220 VOLTS AT 50/60 HZ.



EATON FILTRATION
DESIGN CENTER
ISELIM, NEW JERSEY, USA
PORTAGE, MICHIGAN, USA

THIS DRAWING AND ALL INFORMATION THEREON IS THE PROPERTY OF EATON CORPORATION. IT IS CONFIDENTIAL AND PROPRIETARY AND MUST NOT BE MADE PUBLIC OR COPIED IN WHOLE OR IN PART WITHOUT THE EXPRESS WRITTEN PERMISSION OF EATON CORPORATION. IT IS NOT TO BE USED IN ANY MANNER DETRIMENTAL TO THE INTERESTS OF EATON FILTRATION, LLC.

ENGINEERING APPROVAL
SALES/MKTS APPROVAL

DRAWN BY
M. DESJARDINS
SCALE
NONE

TITLE
SINGLE FILTER SYSTEM WITH OPTION
DATE
05/26/05
SIZE
A
DWG FILENAME
DCF-2000-SNG-GA001
REV
A