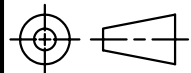


DO NOT SCALE DRAWING

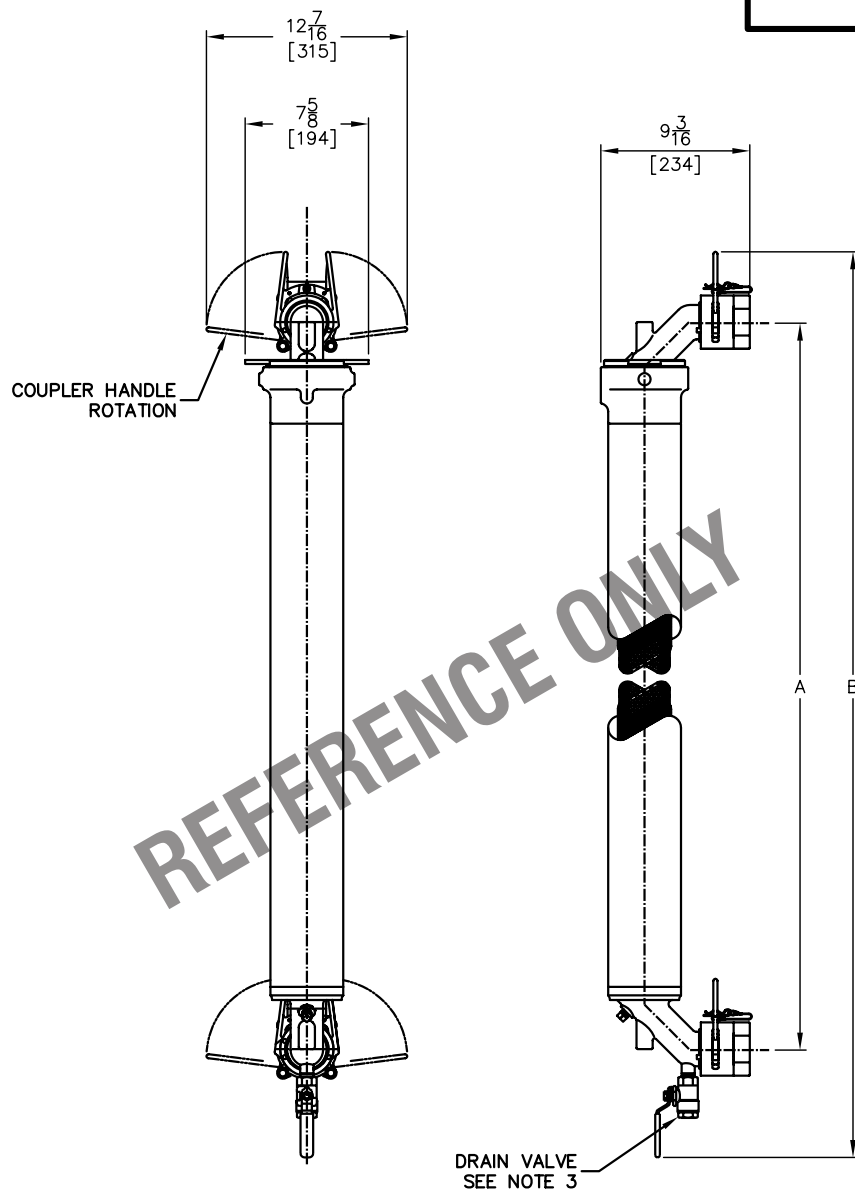


THIRD ANGLE PROJECTION

REVISIONS

	DIM 'A'	DIM 'B'
2218	26-1/2" [673]	37-9/16" [954]
2236	44-15/16" [1141]	56" [1422]

NORDEL (EPT)	VITON (VIT)
1000 PSI [69 BAR] 300F [149C]	1000 PSI [69 BAR] 350F [176C]



REFERENCE ONLY

- NOTES:
1. FILTER SERVICE CONNECTIONS ARE 2", LEVER-LOCK QUICK-COUPLING TYPE.
  2. INLET AND OUTLET GAUGES ARE NOT AN OPTION DUE TO HAMMER-LOCK BODY COUPLER. GAUGES ARE CUSTOMER SUPPLIED AND ARE TO BE INSTALLED ON INLET/OUTLET PIPING.
  3. 1/2" NPT STAINLESS STEEL DRAIN VALVE (AS SHOWN) IS OPTIONAL.
  4. ALL METALLIC WETTED PARTS ARE 316 STAINLESS STEEL.
  5. ALL DIMENSIONS ARE IN INCHES WITH METRIC EQUIVALENTS IN BRACKETS [ ].
  6. FILTER ELEMENTS ARE DESIGNED TO WITHSTAND 150 PSI [10.3 BAR] DIFFERENTIAL PRESSURE.
  7. OPERATING PRESSURE IS UP TO 1000 PSI [69 BAR]. HYDROSTATIC TEST PRESSURE IS 1000 PSI [69 BAR].
  8. EXTERIOR FINISH:  
NATURAL (GLASS BEAD BLAST)



EATON FILTRATION, LLC  
RONNINGEN-PETTER PRODUCTS  
9151 SHAVER ROAD  
PORTAGE, MICHIGAN 49024-6798 USA

THIS DRAWING AND ALL INFORMATION THEREON IS THE PROPERTY OF EATON CORPORATION. IT IS CONFIDENTIAL AND MUST NOT BE MADE PUBLIC. THIS DRAWING IS LOANED SUBJECT TO RETURN ON DEMAND, AND IS NOT TO BE USED DIRECTLY OR INDIRECTLY, IN ANY WAY DETRIMENTAL TO THE INTERESTS OF EATON FILTRATION, LLC.

ENGINEERING APPROVAL .	DRAWN BY B. STUCK	TITLE SS-2218/2236-HP-1000 STRATE-THRU SINGLE FILTER			
SALES/MKTG APPROVAL .	SCALE NONE				
ENGINEERING SPECIFICATION .	DATE 01/03/03	SIZE A	DWG FILENAME SNG-2200-SST-GA002	REV A	