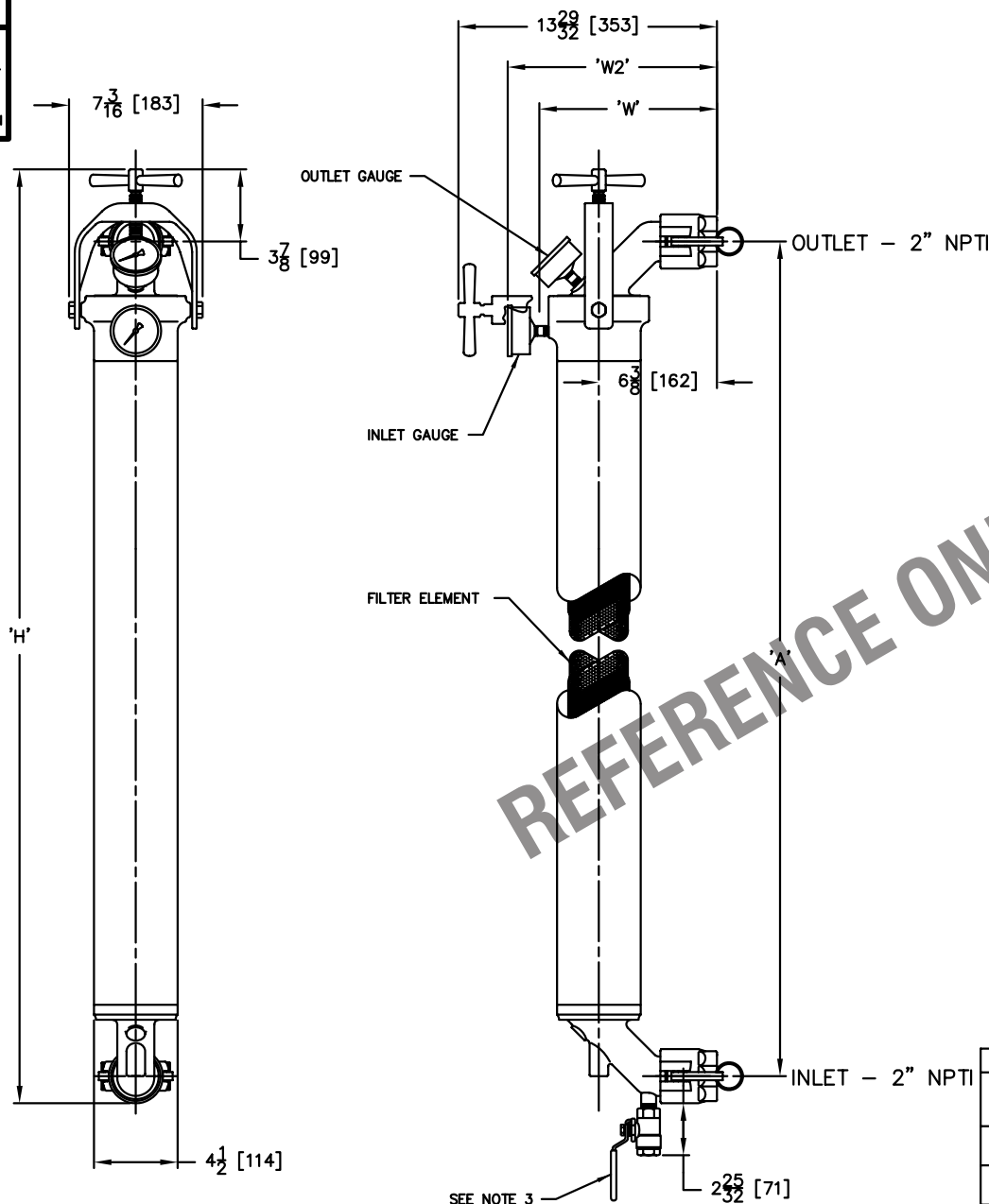
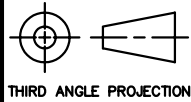


DO NOT SCALE DRAWING

REVISIONS



REFERENCE ONLY

DIMENSIONS					
MODEL	SCREEN SIZE (DIA X LENGTH)	'A'	'H'	'W'	'W2'
3318-STTRS	3 <sup>1</sup> / <sub>2</sub> X 18 [83 X 457]	26 <sup>1</sup> / <sub>2</sub> [705]	31 <sup>1</sup> / <sub>8</sub> [811]	9 <sup>9</sup> / <sub>16</sub> [243]	11 <sup>1</sup> / <sub>2</sub> [286]
3336-STTRS	3 <sup>1</sup> / <sub>2</sub> X 36 [83 X 914]	44 <sup>1</sup> / <sub>8</sub> [1141]	50 <sup>3</sup> / <sub>8</sub> [1280]	9 <sup>9</sup> / <sub>16</sub> [243]	11 <sup>1</sup> / <sub>2</sub> [286]

- NOTES:
1. DIMENSION 'W' IS LESS PRESSURE GAUGE, BUT WITH 1/4" NPT PIPE PLUG.
  2. THE FOLLOWING METALLURGY IS AVAILABLE FOR STRATE-THRU FILTERS:  
316L STAINLESS STEEL
  3. 1/2" NPTI DRAIN VALVE IS OPTIONAL; SHOWN IN SIDE VIEW ONLY.
  4. OPTIONAL GAUGES AVAILABLE WITH 0-200 PSI [0-13.8 BAR] STANDARD PRESSURE RANGE; OTHER PRESSURE RANGES AVAILABLE.
  5. FILTER SERVICE CONNECTIONS ARE QUICK-COUPLING TYPE.
  6. FILTER ELEMENTS ARE DESIGNED TO WITHSTAND 150 PSI [10.3 BAR] DIFFERENTIAL PRESSURE.
  7. DESIGN PRESSURE OF UNIT IS 200 PSI [13.8 BAR].
  8. ALL DIMENSIONS SHOWN IN INCHES WITH MILLIMETER EQUIVALENTS IN BRACKETS [].
  9. MODEL SS-2236-ST IS SHOWN.



EATON FILTRATION, LLC  
RONNINGEN-PETTER PRODUCTS  
9151 SHAVER ROAD  
PORTAGE, MICHIGAN 49024-6798 USA

THIS DRAWING AND ALL INFORMATION THEREON IS THE PROPERTY OF EATON CORPORATION. IT IS CONFIDENTIAL AND MUST NOT BE MADE PUBLIC. THIS DRAWING IS LOANED SUBJECT TO RETURN ON DEMAND, AND IS NOT TO BE USED DIRECTLY OR INDIRECTLY, IN ANY WAY DETRIMENTAL TO THE INTERESTS OF EATON FILTRATION, LLC.

ENGINEERING APPROVAL	DRAWN BY R. BUFFA	TITLE 2218/2236-ST STRATE-THRU FILTER DATA			
SALES/MKTG APPROVAL	SCALE NONE				
ENGINEERING SPECIFICATION	DATE 05/10/05	SIZE A	DWG FILENAME SNG-2200-SST-GA001	REV A	