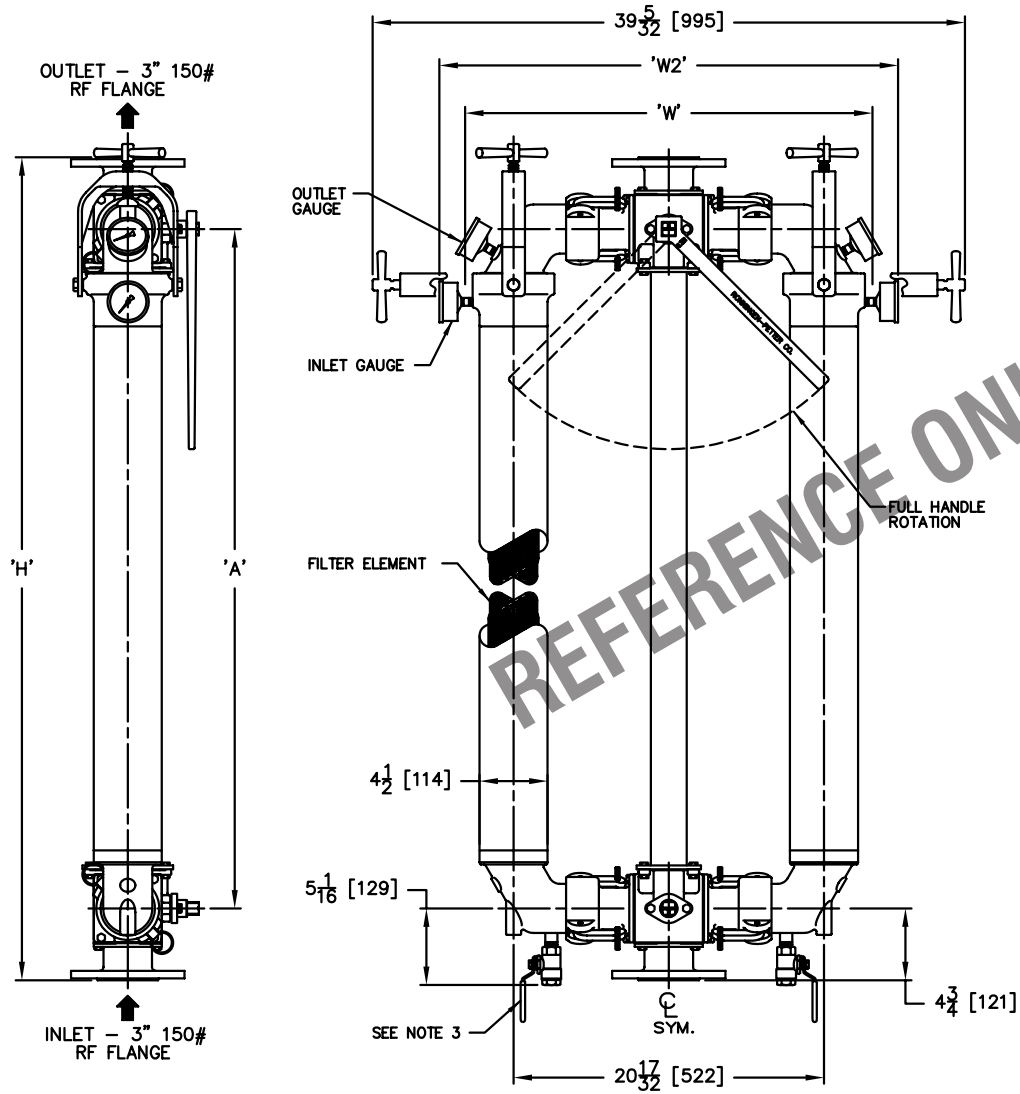


THIRD ANGLE PROJECTION



REFERENCE ONLY

DIMENSIONS					
MODEL	SCREEN SIZE (DIA X LENGTH)	'A'	'H'	'W'	'W2'
3318-ST	34 X 18 [83 X 457]	26 1/2 [705]	36 [914]	26 1/2 [684]	30 1/2 [772]
3336-ST	34 X 36 [83 X 914]	44 1/2 [1141]	54 1/2 [1383]	26 15/16 [684]	30 1/2 [772]

- NOTES:
- DIMENSION 'W' IS LESS PRESSURE GAUGES, BUT WITH 1/4" NPT PIPE PLUGS.
 - THE FOLLOWING METALLURGY IS AVAILABLE FOR STRATE-THRU FILTERS:
BRONZE, STEEL, AND STAINLESS STEEL.
 - 1/2" NPT DRAIN VALVES (STAINLESS STEEL OR BRONZE) ARE OPTIONAL; SHOWN IN SIDE VIEW ONLY.
 - OPTIONAL GAUGES AVAILABLE IN 316 STAINLESS STEEL OR BRONZE WITH 0-200 PSI [0-13.8 BAR] STANDARD PRESSURE RANGE; OTHER PRESSURE RANGES AVAILABLE.
 - FILTER SERVICE CONNECTIONS ARE QUICK-COUPLING TYPE.
 - FILTER ELEMENTS ARE DESIGNED TO WITHSTAND 150 PSI [10.3 BAR] DIFFERENTIAL PRESSURE.
 - DESIGN PRESSURE OF UNIT IS 150 PSI [10.3 BAR].
 - ALL DIMENSIONS SHOWN IN INCHES WITH MILLIMETER EQUIVALENTS IN BRACKETS [].
 - MODEL DSS-3336-ST IS SHOWN.
 - ONE BALL VALVE HANDLE PROVIDED PER UNIT.
 - PROCESS FLANGE CONNECTIONS ARE EQUIPPED STANDARD WITH EITHER ANSI CLASS 150 OR DIN ND 16 FLANGES.



EATON FILTRATION, LLC
RONNINGEN-PETTER PRODUCTS
9151 SHAVER ROAD
PORTAGE, MICHIGAN 49024-6798 USA

THIS DRAWING AND ALL INFORMATION THEREON IS THE PROPERTY OF EATON CORPORATION. IT IS CONFIDENTIAL AND MUST NOT BE MADE PUBLIC. THIS DRAWING IS LOANED SUBJECT TO RETURN ON DEMAND, AND IS NOT TO BE USED DIRECTLY OR INDIRECTLY, IN ANY WAY DETRIMENTAL TO THE INTERESTS OF EATON FILTRATION, LLC.

ENGINEERING APPROVAL .	DRAWN BY R. BUFFA	TITLE 3318/3336-ST DUO STRATE-THRU FILTER DATA			
SALES/MKTG APPROVAL .	SCALE NONE				
ENGINEERING SPECIFICATION	DATE 05/10/05	SIZE A	DWG FILENAME DUO-3300-DST-GA001	REV A	