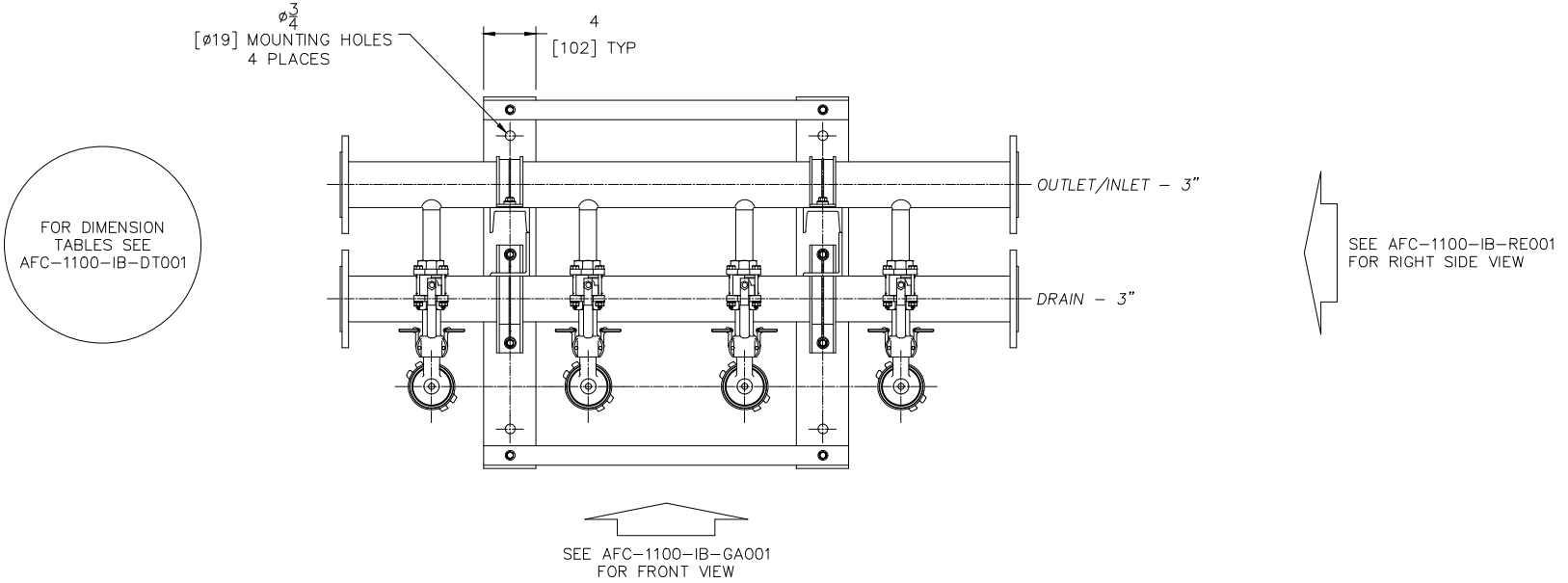


REVISIONS				
REV	DESCRIPTION	BY	ECO	DATE
A	FOR RELEASE	R. BUFFA	0219116	5/10/2005
B	UPDATED TITLE BLOCK AND BORDER	NISHANT S	0226045	9/16/2022




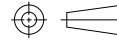
FOR DIMENSION TABLES SEE AFC-1100-IB-DT001

SEE AFC-1100-IB-RE001 FOR RIGHT SIDE VIEW

SEE AFC-1100-IB-GA001 FOR FRONT VIEW

NOTES:

- ALL FLANGED PROCESS CONNECTIONS ARE LAP JOINT TYPE, ZINC PLATED CARBON STEEL.
- PROCESS FLANGE CONNECTIONS ARE DRILLED TO ANSI, CLASS 150 OR DIN ND16.
- HEADERS MAY BE PIPED AT EITHER END; BLIND FLANGES (PURCHASER SUPPLIED) REQUIRED FOR OPPOSITE END.
- CONTROL PANEL IS EXCLUSIVE TO AUTOMATED UNITS.
- 1/4" VALVES (ON INLET/OUTLET HEADERS) ARE EXCLUSIVE TO AUTOMATED UNITS. MANUAL UNITS ARE EQUIPPED WITH GAUGES (1/4" NPT) AT THESE POSITIONS.
- HANDLE EXTENSIONS ARE PROVIDED AT EACH STATION ON MANUAL UNITS.
- ALL METALLIC WETTED PARTS ARE 316 STAINLESS STEEL.
- AUTOMATION AIR REQUIREMENTS: 5 SCFM [142 LITERS/MIN] MAXIMUM DEMAND AT 60 PSI [4.1 BAR] MIN, 120 PSI [8.2 BAR] MAX.
- ALL DIMENSIONS ARE IN INCHES [MM].
- FILTER ELEMENTS ARE DESIGNED TO WITHSTAND 150 PSI [10.3 BAR] DIFFERENTIAL PRESSURE.
- OPERATING PRESSURE IS (SEE SHEET AFC1100IB-4). HYDROSTATIC TEST PRESSURE IS (SEE SHEET AFC1100IB-4).
- EXTERIOR FINISH:
TOP COAT: 1 MIL MINIMUM.
COLOR: SILVER.

DRAWN BY R. BUFFA		 EATON FILTRATION, LLC DESIGN CENTER			
SCALE AS DRAWN					
RESTRICTION RESTRICTED		TITLE AFC-1100 INTERNAL BACKWASH FILTER INLINE FLOOR PLAN			
SHEET 1 OF 1					
PROJECTION THIRD ANGLE		DATE 05/10/05	SIZE A	DWG FILENAME AFC-1100-IB-FP001	REV B
<small>EATON CORPORATION - CONFIDENTIAL AND PROPRIETARY NOTICE TO PERSONS RECEIVING THIS DRAWING AND/OR TECHNICAL INFORMATION THIS DOCUMENT, INCLUDING THE DRAWING AND INFORMATION CONTAINED THEREON IS CONFIDENTIAL AND IS THE EXCLUSIVE PROPERTY OF EATON AT ANY TIME. BY TAKING THE POSSESSION OF THIS DOCUMENT THE RECIPIENT ACKNOWLEDGES AND AGREES THAT THIS DOCUMENT CANNOT BE USED IN ANY MANNER ADVERSE TO THE INTEREST OF EATON AND THAT NO PORTION OF THIS DRAWING MAY BE COPIED OR OTHERWISE REPRODUCED WITHOUT THE PRIOR WRITTEN CONSENT OF EATON, IN THE CASE OF CONFLICTING CONTRACTUAL PROVISIONS, THIS NOTICE SHALL GOVERN THE STATUS OF THIS DOCUMENT. 2022 EATON CORPORATION - ALL RIGHTS RESERVED.</small>					