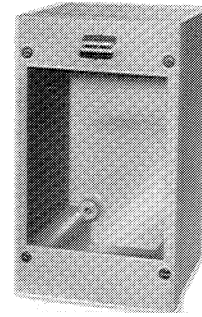


**NJBW INSTRUMENT ENCLOSURES
MADE OF KRYDON™ AND
WITH A WINDOW IN THE COVER
INSTRUCTIONS FOR INSTALLATION & MAINTENANCE**



APPLICATION

NJBW instrument enclosures are designed for indoor/outdoor use in wet and/or lightly corrosive atmospheres to enclose any of a variety of instruments or meters. These enclosures comply with NEMA 3, 4X and 12 requirements.

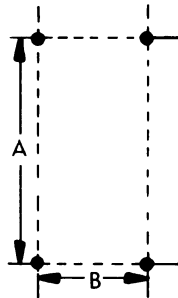
HOW TO INSTALL

WARNING

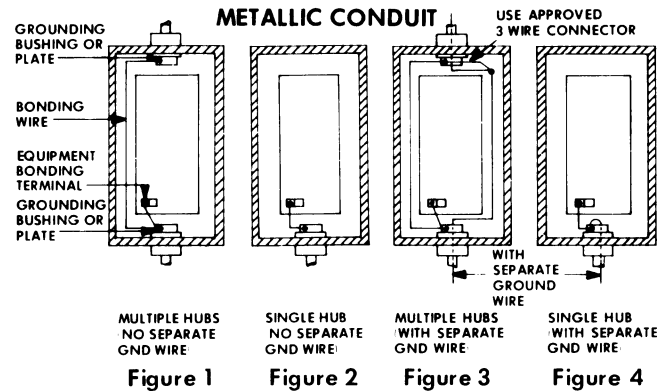
Make certain any electrical power source is OFF before starting any installation or maintenance.

1. Completely loosen all cover screws and carefully set cover with gasket and screws aside in a safe place to prevent damage to the cover or gasket or scratching of the window.
2. Remove interior panel, with or without equipment, from the body to aid installation and pulling of wires.
3. Where required install Crouse-Hinds Company NHUB conduit hubs in the enclosure in the manner outlined in the instruction sheet provided with the hubs (IF618).
4. The enclosure has four (4) 9/32" diameter holes, one at each inside corner for surface mounting. Drill holes according to pattern shown in illustration and securely mount enclosure in position that is desired.

Catalog Number	A	B
NJBW 050905TC	8 3/8	4 3/8
NJBW 071006TC	9 3/8	6 3/8
NJBW 071406TC	13 3/8	6 3/8



5. Install conduit in the entrance hubs of the enclosure in the manner outlined in the instruction sheet IF618 furnished.
6. Bonding and grounding of electrical conduit and equipment: The NEC requires that when more than one conduit enters the box, ground continuity between conduits must be maintained through proper bonding. Internal mounting plate must be bonded to the conduit. A grounding conductor, if used, must be connected to the conduit bonding system.



- Use Crouse-Hinds type GP or GB bonding fittings. See Figures 1, 2, 3 & 4 for recommended wiring procedures. Use wire type and size as required by NEC or other applicable standards.
7. Where applicable pull in wiring from electrical power source to provide enough length for connections to be made in the proper manner.
 8. Replace interior equipment panel into body and securely tighten 10-32 screws. Attach equipment grounding lead.
- CAUTION**
- Do NOT exceed 35 inch-pounds torque.
9. Make connections in a manner to comply with all applicable codes.
 10. **CAUTION:** Make sure cover gasket and body flange are free of all damage, dirt and/or gritty materials to insure proper seating of gasket.
 11. Replace cover on body.
 12. Securely tighten 10-32 cover screws. Do NOT exceed 35 inch-pounds of torque.
 13. Installation is now complete. Any electrical circuits can be energized.

PERIOD MAINTENANCE

Perform periodic visual, electrical and mechanical checks of all components on a regular schedule. This should be determined by the environment and frequency of use but it is recommended that it should be at least once a year.

CAUTION

The clear cover is an acrylic plastic and should not be cleaned with solvents or abrasive cleaners. Use only mild soap and water using clean soft cloths.

All statements, technical information and recommendations contained herein are based on information and tests we believe to be reliable. The accuracy or completeness thereof are not guaranteed. In accordance with Crouse-Hinds' "Terms and Conditions of Sale", and since conditions of use are outside our control, the purchaser should determine the suitability of the product for his intended use and assumes all risk and liability whatsoever in connection herewith.

FILE THIS INSTRUCTION SHEET FOR FUTURE USE.