



NJB, NCS KRYDON ENCLOSURES

These enclosures have a one piece cover, with or without external hinges.

I. Preparation for Installation

1. Completely loosen all captive cover screws.
2. Lift off cover if it has no hinges. If cover has hinges open cover and remove it by lifting cover part of hinge out of body part of hinge, setting cover aside carefully to prevent damage to gasket.
3. Remove mounting plate and/or equipment mounted in body.

II. Mounting the Enclosure

A. Enclosures having no mounting feet.

1. See Figure 1 for catalog number and mounting pattern dimensions for particular enclosure being installed.
2. Drill mounting holes and mount enclosure securely in desired position.

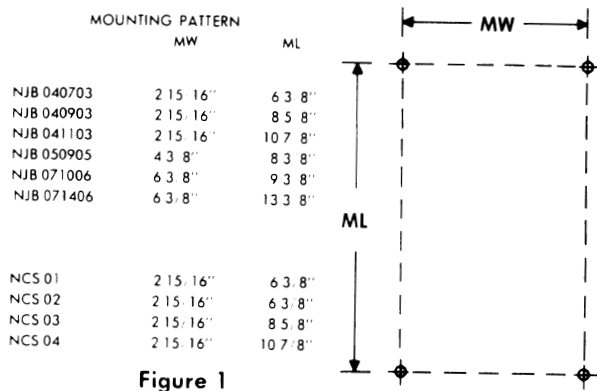


Figure 1

B. Enclosures with mounting feet.

1. Enclosure has mounting feet as shown in Figure 2. See catalog number and mounting dimensions for particular enclosure being installed.

	REGULAR AND ALTERNATE MOUNTING PATTERNS			
	MW	ML	MWA	MLA
NJB 1018	7 7 8"	19 3 8"	11 3 8"	15 7 8"
NJB 1024	7 7 8"	25 3 8"	11 3 8"	21 7 8"
NJB 1426	11 7 8"	27 1 4"	15 3 8"	23 3 4"
NJB 2426	21 3 4"	27 1 4"	25 1 4"	23 3 4"

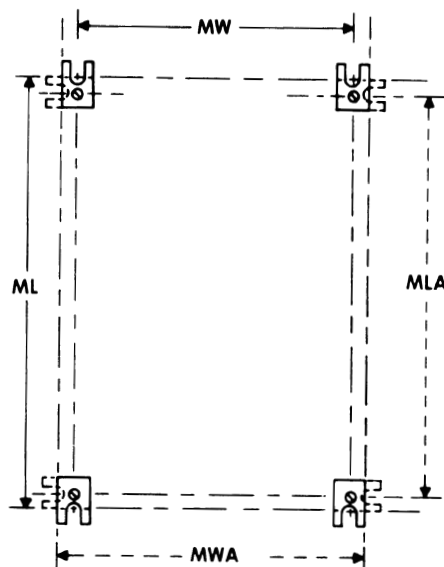


Figure 2

2. Enclosures are shipped with feet stowed inwardly and screws holding feet must be loosened and feet turned outwardly, 180° from shipping position. Make sure feet are seated firmly in recess and then tighten holding screws securely.

NOTE

Slots in mounting feet are 17/32" wide allowing for use of mounting bolts up to 1/2" in size. It is recommended that 3/8" mounting bolts be used.

CAUTION

All mounting hardware should be of corrosion resistant material and a flat washer must be used under heads of mounting fasteners.

III. Installation of Conduit Hubs

1. Find catalog number of enclosure in Table 1. Read under column D distance from outside surface of the enclosure (opposite the cover) as shown in Figures 3, 4 & 5 where a horizontal line is to be located and drawn.

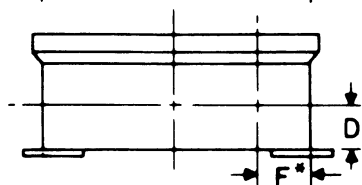
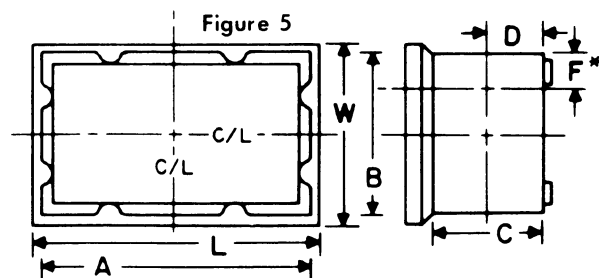
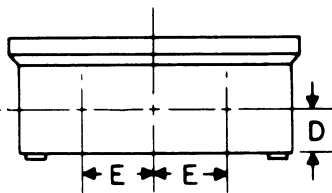
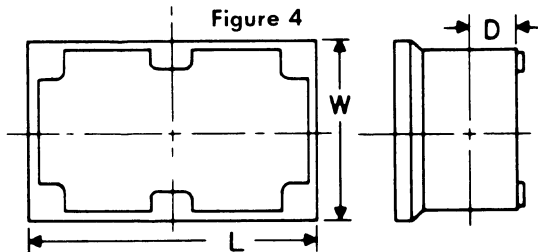
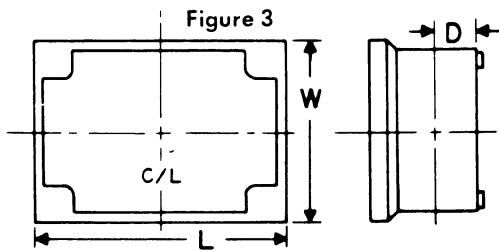
TABLE 1

CATALOG NUMBER	FIG. NO.	A	B	C	D	E	NOM. WALL THICKNESS	MAX HUB SIDE W	MAX HUB SIDE L
NJB040703 NJB040903 NJB041103	3				1		3/16	3/4	3/4
NJB050905	3				2		3/16	1 1/2	1 1/2
NJB071006 NJB071406	4				2 3/8	2 5/8	3/16	2	2
NJB101807	5	18 1/2	10 1/2	4 3/8	2 3/8		1/4	2 1/2	2
NJB102407	5	24 1/2	10 1/2	4 3/8	2 3/8		1/4	2 1/2	2
NJB142608	5	26 1/2	14 1/2	5 3/8	3		1/4	3	2 1/2
NJB242608	5	26 1/2	24 1/2	5 3/8	3		1/4	3	2 1/2
NCS01 NCS02 NCS03 NCS04	3				1		3/16	3/4	3/4

TABLE 2. CHART FOR COMBINATIONS OF HUB SIZES SHOWING RECOMMENDED MINIMUM C/L TO C/L HUB SPACING IN INCHES.

SIZE	1/2	3/4	1	1 1/4	1 1/2	2	2 1/2	3	F*
1/2	1 3/4								1 1/8
3/4	1 7/8	2 1/8							1 1/4
1	2	2 1/4	2 3/8						1 3/8
1 1/4	2 3/8	2 1/2	2 5/8	3					1 1/2
1 1/2	2 1/2	2 3/4	2 7/8	3 1/8	3 3/8				1 7/8
2	2 7/8	3 1/8	3 1/4	3 1/2	3 3/4	4 1/8			2 1/8
2 1/2	3 1/8	3 3/8	3 1/2	3 3/4	4	4 3/8	4 7/8		2 3/8
3	3 1/2	3 3/4	3 7/8	4 1/8	4 3/8	4 7/8	5	5 3/8	2 3/4

2. Mark vertical line at location(s) on end(s) or side(s) of enclosure where hub(s) are to be placed. (See Figures 3, 4 or 5 and Tables 1 and 2 for information on locating these points.)



F* SEE TABLE 2.

- Position template shipped with each hub on enclosure so center lines match lines on enclosure. (Hole size is shown on each template and in Table 3.)
- Mark center of circle(s) with prick punch and drill or cut proper size hole(s) using hole saw or Greenlee cutter.
- Install hub in hole using hub locknut making sure the two polypropylene washers with a metal washer between them are in place in the recess in the hub end and are against the outside surface of the enclosure. Fasten hub securely in place using hub locknut. Use sealing compound around conduit in outer part of hub. (See Figures 6 and 7 and Table 3.)
- After hubs are secured in place by hub locknut either a grounding bushing or a grounding plate should be attached to the hub end inside the enclosure.

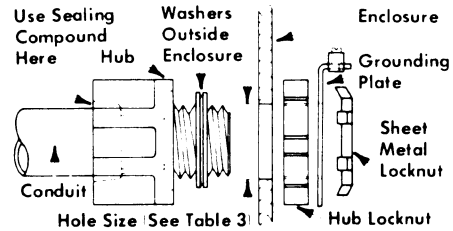


Figure 6

Grounding Plate must be used on:
NCS-A11
NJB-040703
NJB-040903
NJB-041103



Figure 7

TABLE 3

Catalog Number	Hub Size	Hole Size
NHUB1	1/2"	7/8"
NHUB2	3/4"	1 1/8"
NHUB3	1"	1 3/8"
NHUB4	1 1/4"	1 3/4"
NHUB5	1 1/2"	2"
NHUB6	2"	2 1/2"
NHUB7	2 1/2"	3"
NHUB8	3"	3 5/8"

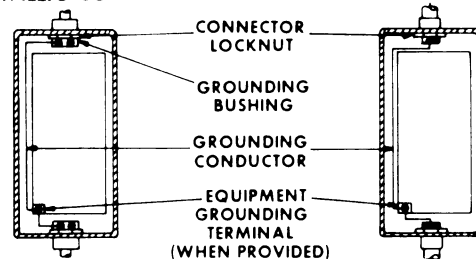
IV. Grounding

WARNING

When more than one hub enters an enclosure every hub must have a grounding plate or a grounding bushing. Any device having a metal portion, or portions, extending out of the enclosure must be properly grounded. Grounding must be done in accordance with the National Electrical Code and any applicable local codes.

METALLIC CONDUIT

NON-METALLIC CONDUIT



V. Completing Installation

Items covered in Figures 3 and 4

- Replace cover and tighten 10-32 cover screws securely. Do not exceed 35 inch/lbs. torque.

Items covered in Figure 5

- Replace cover and tighten 1/4-20 cover screws securely. Do not exceed 45 inch/lbs. torque.