

5E Fiberglass Enclosures Raised Cover Series

Eaton's Crouse-Hinds Raised Cover Series offers a solution for applications requiring an enclosure with a "raised" or "deeper" cover. The deeper cover is suitable for panel mounting and for use as an operator interface in industrial equipment control stations when required. The deeper cover allows every cubic inch of valuable internal enclosure space to be used. These enclosures are made of fiberglass reinforced polyester and have a poured polyurethane seamless gasket that provides a water-tight and dust-tight environmental seal for exceptional corrosion and chemical resistance. The Raised Cover Series will hold up under the most extreme applications and provide protection and reliability in high-end electronics applications, harsh corrosive environments, and industrial applications both indoors and out.

Features & Benefits:

- Memory retaining continuous polyurethane gasket
- Molded in mounting flange
- Captive stainless steel cover screws
- Chemical resistant fiberglass reinforced polyester
- Submersible, non-corrosive design
- Water-tight, dust-tight
- Non-conductive, impact resistant, UV resistant
- Material cuts, drills, punches, and saws with ease and accuracy
- Rounded edges, minimal protrusions or exposed pocket areas for assembly of dust and debris
- Smooth surface, no color variations, swirls or color pockets, no voids



Certification & Compliances:

- UL/cUL 50, Types 1, 3, 4X, 6P, 12
- UL File Number E57656
- CSA Std C22.2 - File 244248 Types 1, 3, 4X, 6P, 12
- NEMA Standard 250 - Types 1, 3, 4X, 6P, 12
- Temperature Range - (-76°F to +250°F) (-60°C to +120°C)
- Flammability Rating - UL94-5V
- Non-flame propagating

Materials and Finishes:

- Hot compression molded fiberglass reinforced thermoset polyester
- Poured polyurethane seamless gasket provides water-tight dust-tight environmental seal
- Captive stainless steel screws
- 304 stainless steel used on all external hardware
- Molded in mounting flange
- Panel mounting capability for fixed rear panel
- Bosses utilize threaded brass inserts accepting 10-32 screws

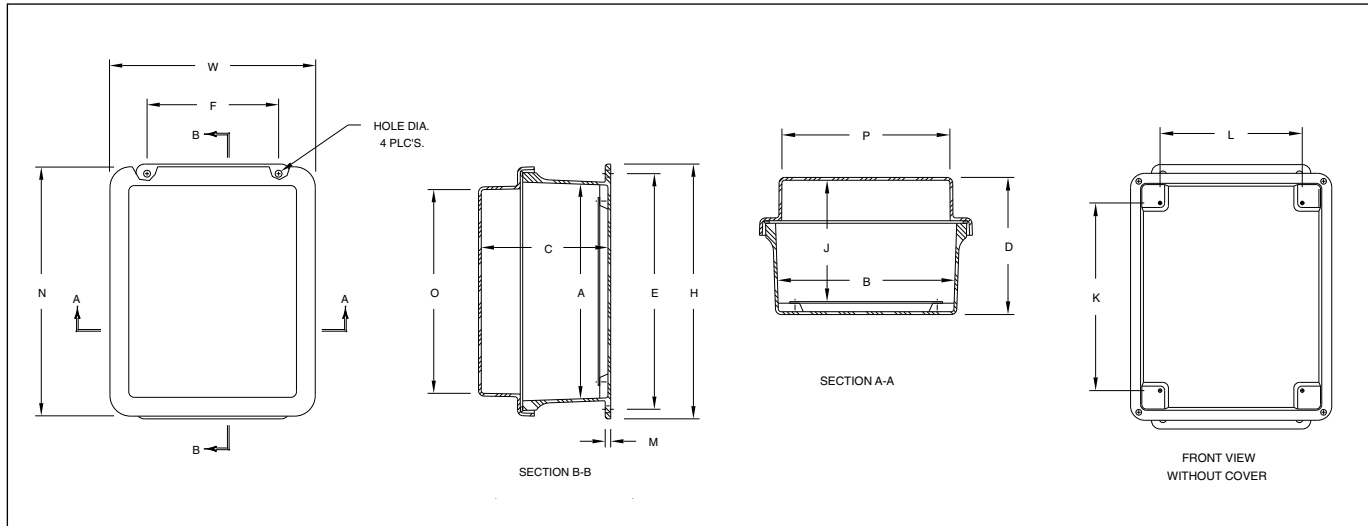
Ordering Information

Inside H x W x D	4 Cover Screws With Lift Off Cover	2 Cover Screws With a Hinged Cover	Hinged Cover With a Padlock Latch	Mounting Plate*
5.84 x 3.85 x 5.95	FRCJS060406	FRCJHS060406	FRCJHP060406	FMP0604
5.72 x 5.72 x 5.95	FRCJS060606	FRCJHS060606	FRCJHP060606	FMP0606
7.73 x 5.74 x 5.95	FRCJS080606	FRCJHS080606	FRCJHP080606	FMP0806
7.73 x 7.73 x 4.82	FRCJS080805	FRCJHS080805	FRCJHP080805	FMP0808
9.73 x 7.73 x 6.36	FRCJS100806	FRCJHS100806	FRCJHP100806	FMP1008
11.79 x 9.80 x 6.32	FRCJS121006	FRCJHS121006	FRCJHP121006	FMP1210
11.70 x 11.70 x 6.29			FRCJHP121208	FMP1212
13.53 x 11.55 x 7.45	FRCJS141208	FRCJHS141208	FRCJHP141208	FMP1412
15.63 x 13.60 x 7.45	FRCJS161408	FRCJHS161408	FRCJHP161408	FMP1614
17.69 x 15.69 x 10.31	FRCJS181610	FRCJHS181610	FRCJHP181610	FMP1816
19.72 x 15.72 x 10.33	FRCJS201610	FRCJHS201610	FRCJHP201610	FMP2016

* Available in: Aluminum (SA), Fiberglass (FG), Carbon Steel (C), and Stainless Steel (SS)
To order, add the suffix to the end of the part number

Crouse-Hinds
by **E.T.N.**

Dimensional Drawings



Configuration Dimensions In Inches (mm)

Catalog Number	Overall H x W x D	Inside A x B x C	Mounting E x F	J	K	L	M	N	O	P	Hole Dia.	Weight
FRCJS060406 FRCJHS060406 FRCJHP060406	7.50 x 5.47 x 6.22 (191 x 139 x 158)	5.84 x 3.85 x 5.95 (148 x 98 x 151)	5.84 x 3.85 x 5.95 (148 x 98 x 151)	5.49 (140)	4.25 (108)	2.25 (57)	0.25 (6)	7.45 (189)	5.31 (135)	3.34 (85)	0.31 (8)	2.5 lbs.
FRCJS060606 FRCJHS060606 FRCJHP060606	7.50 x 7.52 x 6.22 (191 x 191 x 158)	5.72 x 5.72 x 5.95 (145 x 145 x 151)	6.75 x 4 (171 x 101)	5.49 (140)	4.25 (108)	4.25 (108)	0.25 (6)	7.52 (191)	5.34 (136)	5.31 (135)	0.31 (8)	2.75 lbs.
FRCJS080606 FRCJHS080606 FRCJHP080606	9.62 x 7.46 x 6.22 (244 x 190 x 158)	7.73 x 5.74 x 5.95 (196 x 146 x 151)	8.88 x 4 (225 x 101)	5.49 (140)	6.25 (159)	4.25 (108)	0.25 (6)	9.36 (238)	7.25 (185)	5.28 (134)	0.31 (8)	3.5 lbs.
FRCJS080805 FRCJHS080805 FRCJHP080805	9.56 x 9.38 x 6.26 (243 x 238 x 159)	7.73 x 7.73 x 6.01 (196 x 196 x 153)	8.75 x 6.00 (222 x 152)	5.43 (138)	6.25 (159)	6.25 (159)	0.25 (6)	9.37 (238)	7.17 (182)	7.17 (182)	0.31 (8)	4 lbs.
FRCJS100806 FRCJHS100806 FRCJHP100806	11.62 x 9.37 x 6.61 (295 x 238 x 168)	9.73 x 7.73 x 6.36 (247 x 196 x 162)	10.75 x 6 (273 x 152)	5.91 (150)	8.25 (209)	6.25 (159)	0.25 (6)	11.38 (289)	9.3 (236)	7.38 (188)	0.31 (8)	5 lbs.
FRCJS121006 FRCJHS121006 FRCJHP121006	13.56 x 11.43 x 6.61 (344 x 291 x 168)	11.79 x 9.80 x 6.32 (299 x 249 x 161)	12.75 x 8 (324 x 203)	5.87 (149)	10.25 (260)	8.25 (209)	0.25 (6)	13.41 (341)	11.2 (284)	9.23 (234)	0.31 (8)	6.5 lbs.
FRCJHP121208	13.56 x 13.38 x 7.73 (344 x 340 x 196)	11.70 x 11.70 x 7.48 (297 x 297 x 190)	12.75 x 10.00 (324 x 254)	6.90 (175)	10.25 (260)	10.25 (260)	0.25 (6)	13.38 (340)	11.17 (284)	11.17 (284)	0.31 (8)	7.4 lbs.
FRCJS141208 FRCJHS141208 FRCJHP141208	15.50 x 13.38 x 7.69 (394 x 340 x 195)	13.53 x 11.55 x 7.45 (344 x 293 x 189)	14.62 x 10 (371 x 254)	6.87 (174)	12.25 (311)	10.25 (260)	0.25 (6)	15.42 (392)	13.2 (335)	11.16 (284)	0.31 (8)	8.5 lbs.
FRCJS161408 FRCJHS161408 FRCJHP161408	17.53 x 15.43 x 7.71 (445 x 392 x 196)	15.63 x 13.60 x 7.45 (397 x 345 x 189)	16.75 x 12 (425 x 305)	6.87 (174)	14.25 (362)	12.25 (311)	0.25 (6)	17.43 (443)	15.2 (386)	13.24 (336)	0.31 (8)	11.5 lbs.
FRCJS181610 FRCJHS181610 FRCJHP181610	19.62 x 17.48 x 10.62 (498 x 444 x 270)	17.69 x 15.69 x 10.31 (449 x 399 x 262)	18.88 x 12 (479 x 305)	9.86 (250)	16.25 (413)	14.25 (362)	0.25 (6)	19.49 (495)	17.25 (438)	15.25 (387)	0.31 (8)	19.25 lbs.
FRCJS201610 FRCJHS201610 FRCJHP201610	22.00 x 17.56 x 10.64 (559 x 446 x 270)	19.72 x 15.72 x 10.33 (501 x 399 x 262)	21.25 x 10.00 (540 x 254)	9.87 (251)	18.25 (464)	14.25 (362)	0.25 (6)	21.56 (548)	19.31 (490)	15.39 (391)	0.31 (8)	20.25 lbs.

