

# 1E EMH Instrument Housings

Cl. I, Div. 1 & 2, Group D  
 Cl. II, Div. 1, Groups E, F, G  
 Cl. II, Div. 2, Groups F, G  
 Cl. III  
 NEMA 3, 7D, 9EFG, 12

Explosionproof  
 Dust-Ignitionproof  
 Raintight  
 Wet Locations

## Applications:

EMH instrument housings are used:

- To enclose 2 1/2" or 3 1/2" diameter round, flush rim-mounting meters, whose scale or dial would be visible in the 2 5/8" diameter glass window. Typical types of instruments or meters are ammeters, voltmeters, etc.
- In specific hazardous atmospheres such as encountered in oil refineries, chemical plants, paint and varnish manufacturing plants, certain hazardous metal finishing areas, coal processing locations, granaries and grain processing plants

## Features:

- Sight-glass in cover permits viewing of instrument dial or setting.
- Enclosures are non-magnetic, available in surface mounting and flush panel mounting. The cylindrical extension of the cover opening on the flush bodies will project through a hole in panel. Thickness of panel must not exceed 1/4" to insure flamtight assembly of cover threads with body threads.
- Mounting plates and posts in bodies support the instrument close to the heavy glass window in cover. Maximum depth of instrument extending from outboard end of posts towards the back wall of enclosure body is 3". There is ample wiring space in back of instruments.
- Bodies have bosses on all four sides and back for drilling and tapping of conduit entrances.
- Dead end and through feed arrangements for 3/4" rigid conduit are standard listings.

## Certifications and Compliances:

- NEC/CEC:
  - Class I, Division 1 & 2, Group D
  - Class II, Division 1, Groups E, F, G
  - Class II, Division 2, Groups F, G
  - Class III
- NEMA/EEMAC: 3, 7D, 9EFG, 12
- UL Standard: 1203
- CSA Standard: C22.2 No. 30

## Standard Materials:

- Bodies – copper-free aluminum
- Covers – copper-free aluminum
- Windows – heat strengthened plate glass

## Standard Finishes:

- Natural

## Instrument Housings

Style	Conduit Openings	Size	Cat. #
Surface	One in Side (Dead End)	3/4"	EMH521 20000
	Two in Sides (Through Feed)		EMH533 20000
			EMH521 20200 EMH533 20200
Flush	One in Side (Dead End)	3/4"	EMH511 20000
	Two in Sides (Through Feed)		EMH534 20000
			EMH511 20200 EMH534 20200

## Standard Meters Housed in EMH511, EMH521†

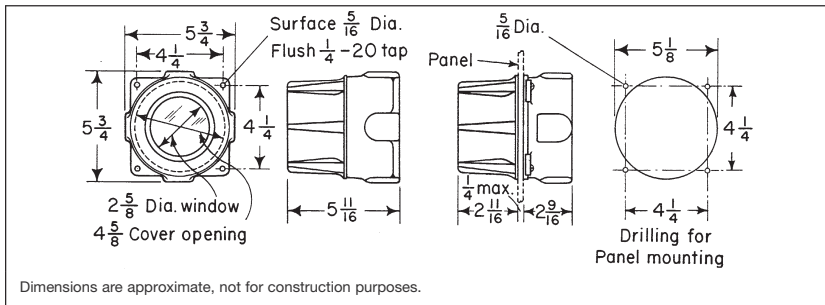
Manufacturer	Model	Size
Weston	201 Series	2 1/2"
	301 Series	3 1/2"
Westinghouse	125 Series	2 1/2"
	135 Series	
	145 Series	
	155 Series	
Simpson	25 Series	3 1/2"
	35 Series	
	45 Series	
	55 Series	
	75 Series	
	3222 Series	2 1/2"
	3282 Series	
	3223 Series	3 1/2"
	3283 Series	

†Type-Round Flush

## Standard Meters Housed in EMH533, EMH534

Manufacturer	Model	Size	Type
G.E.	AW-91 Series	2 1/2"	Rect. Flush
	DW-91 Series		
Weston	201 Series	2 1/2"	Square Flush
	1721 Series		Rect. Flush

## Dimensions In Inches:



Flush



Surface

## Options:

- Other conduit hub sizes and arrangements can be furnished.