



# Fast-acting fuses provide reliable overcurrent protection in industrial applications



Eaton's KLKE fast-acting fuses are designed to protect control circuits, lighting circuits, industrial control panels, and other electrical applications.

### Product description

Eaton's KLKE fast-acting fuses are designed to protect control circuits, lighting circuits, industrial control panels, and other electrical applications. These 600 Vac/dc rated 10 x 38 mm (13/32" x 1 1/2") supplementary fuses have high interrupting ratings and current limiting capability. They can be paired with Eaton's panel mount fuse holders, fuse clips, fuse blocks, inline fuse holders and UL508 disconnects for ease of replacement upon opening. They are offered in cylindrical cartridge), PCB terminal mount or bolt-down terminals. Relevant fuse accessories for the KLKE from Eaton include [HP](#), [CHM](#), [EVMFH](#), [BMM](#), [CCP2](#), [HEB](#), and [1A3400](#).

### Features and benefits

- High power density solutions leverage commonly used fuse accessories while shrinking footprints
- Suitable for use in high voltage applications; 600 Vac/dc rated
- Allows ease of integrating fuses in customer applications
- Cylindrical (cartridge), PCB terminal mount and bolt down terminal mount options

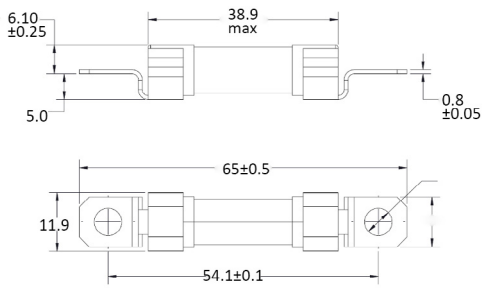


Powering Business Worldwide

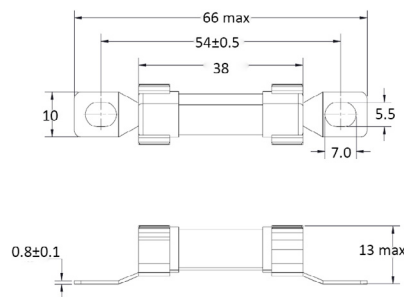
## Product specifications

Part number	Current rating (A)	Voltage rating		Breaking capacity @ rated voltage		Power loss (W)
		(V <sub>ac</sub> )	(V <sub>dc</sub> )	(A) V <sub>ac</sub>	(A) V <sub>dc</sub>	
KLKE-5	5	600	600	50,000	50,000	1
KLKE-6	6	600	600	50,000	50,000	2
KLKE-8	8	600	600	50,000	50,000	2
KLKE-10	10	600	600	50,000	50,000	2
KLKE-12	12	600	600	50,000	50,000	2.8
KLKE-15	15	600	600	50,000	50,000	3
KLKE-20	20	600	600	50,000	50,000	3.6
KLKE-25	25	600	600	50,000	50,000	4.1
KLKE-30	30	600	600	50,000	50,000	5.7

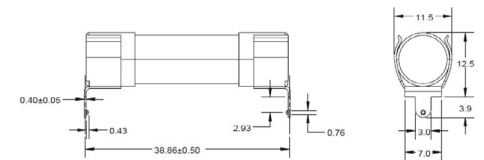
### AT: Bolt-down terminal axial tag



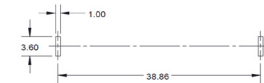
### FT: Bolt-down terminal flush tag



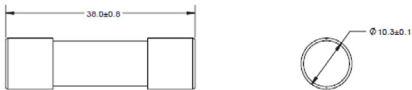
### 1P: PCB single terminal



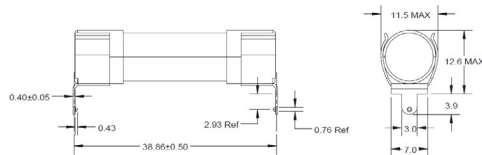
### PCB layout



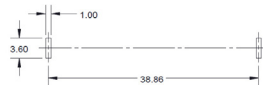
### Standard cylindrical (cartridge)



### 1P=PCB single terminal



### PCB 1P single terminal layout



**Eaton**  
**Electronics Division**  
 1000 Eaton Boulevard  
 Cleveland, OH 44122  
 United States  
 Eaton.com/electronics

© 2023 Eaton  
 All Rights Reserved  
 Printed in USA  
 Publication No.ELX1320 BU-ELX22184  
 August 2023

Eaton is a registered trademark.

All other trademarks are property of their respective owners.

Follow us on social media to get the latest product and support information.

