

Eaton 10 x 38 mm xEV fuses



10 x 38 mm fast-acting fuses for reliable overcurrent protection in EV applications



Eaton's Bussmann™ series 10 x 38 mm xEV fuses provide high voltage DC-rated overcurrent protection for electric vehicle power management.

Product description

Eaton's Bussmann™ series 10 x 38 mm xEV fuses provide high voltage (up to 1000 V) DC-rated overcurrent protection for electric vehicle power management. These 10 x 38 mm diameter fuses are offered in 3 families: EVM10, EXM10, and EKM10, with multiple termination styles (including cartridge, bolt down, and PCB) available.

Features and benefits

- More compact footprints compared to other cartridge fuse diameters
- High voltage ratings; up to 1000 V
- Multiple termination styles with cartridge, bolt down, and PCB
- Allows ease of integrating fuses in customer applications

EATON

Powering Business Worldwide

Electrical characteristics

EVM10

Amps (A)	Minimum	Maximum
1.0 In	4 hours	-
2.0 In	0.5 seconds	100 seconds
3.0 In	0.1 seconds	15 seconds
5.0 In	0.05 seconds	1 seconds

EXM10

Amps (A)	Minimum	Maximum
1.0 In	4 hours	-
2.0 In	0.5 seconds	100 seconds
3.0 In	0.1 seconds	15 seconds
5.0 In	0.05 seconds	1 seconds

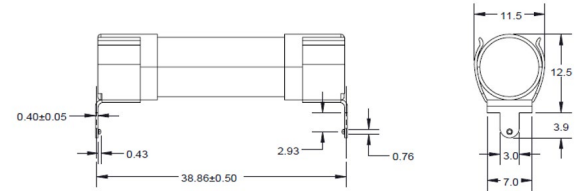
EKM10

Amps (A)	Minimum	Maximum
1.0 In	4 hours	-
2.0 In	1 seconds	300 seconds
3.0 In	0.2 seconds	30 seconds
5.0 In	0.1 seconds	10 seconds

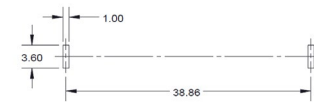
Product specifications

Part number	Voltage rating (V _{DC})	Current rating (A)	Interrupting rating @ rated voltage (V _{DC})	Suffix
EVM10				
EVM10-5	500	5	20,000	-SCT, -1P, -2P
EVM10-10	500	10	20,000	-SCT, -1P, -2P
EVM10-20	500	20	20,000	-SCT, -1P, -2P
EVM10-30	500	30	20,000	-SCT, -1P, -2P
EVM10-40	500	40	20,000	-SCT, -1P, -2P
EVM10-50	500	50	20,000	-SCT, -1P, -2P
EXM10				
EXM10-5	800	5	50,000	-SCT, -1P, -2P
EXM10-10	800	10	50,000	-SCT, -1P, -2P
EXM10-15	800	15	50,000	-SCT, -1P, -2P
EXM10-20	800	20	50,000	-SCT, -1P, -2P
EXM10-25	800	25	50,000	-SCT, -1P, -2P
EXM10-30	800	30	50,000	-SCT, -1P, -2P
EXM10-40	800	40	50,000	-SCT, -1P, -2P
EXM10-50	750	50	50,000	-SCT, -1P, -2P
EKM10				
EKM10-10	1000	10	50,000	-SCT, -AT, -1P, -2P
EKM10-15	1000	15	50,000	-SCT, -AT, -1P, -2P
EKM10-20	1000	20	50,000	-SCT, -AT, -1P, -2P
EKM10-25	1000	25	50,000	-SCT, -AT, -1P, -2P
EKM10-30	1000	30	50,000	-SCT, -AT, -1P, -2P

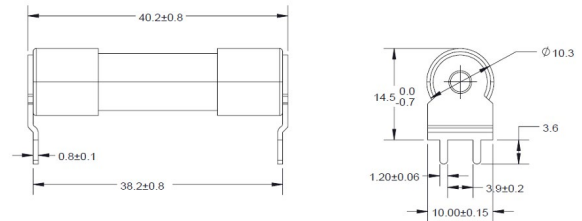
1P: 1 Pin PCB terminal



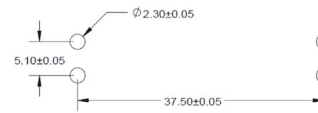
PCB layout 1 pin



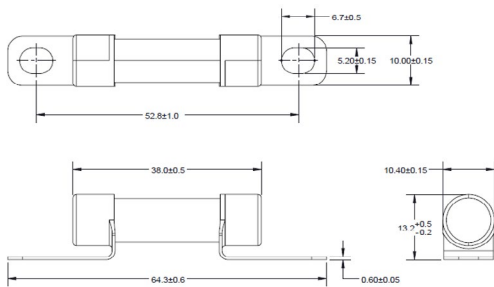
2P: 2 Pin PCB terminal



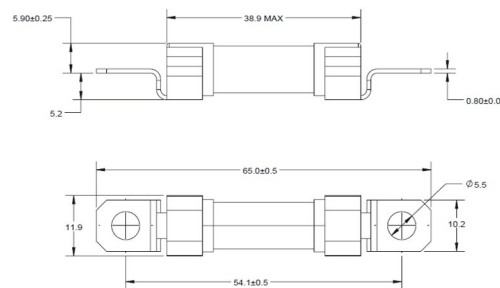
PCB layout 2 pin



SCT: Single cap tag, Bolt-down terminal



AT: Axial tag, Bolt-down terminal



Eaton
Electronics Division
 1000 Eaton Boulevard
 Cleveland, OH 44122
 United States
Eaton.com/electronics

© 2023 Eaton
 All Rights Reserved
 Printed in USA
 Publication No. ELX1322 BU-ELX22186
 February 2023

Eaton is a registered trademark.
 All other trademarks are property
 of their respective owners.

Follow us on social media to get the
 latest product and support information.

