

Series G JG-Frame 310+ circuit breaker time current curves

Contents

Description	Page
Long delay response (LD) and short delay (SD) with flat response curve	2
Long delay response and short delay with I ² T response curve	3
Ground fault delay response curve	4



Powering Business Worldwide

Long delay response (LD) and short delay (SD) with flat response curve

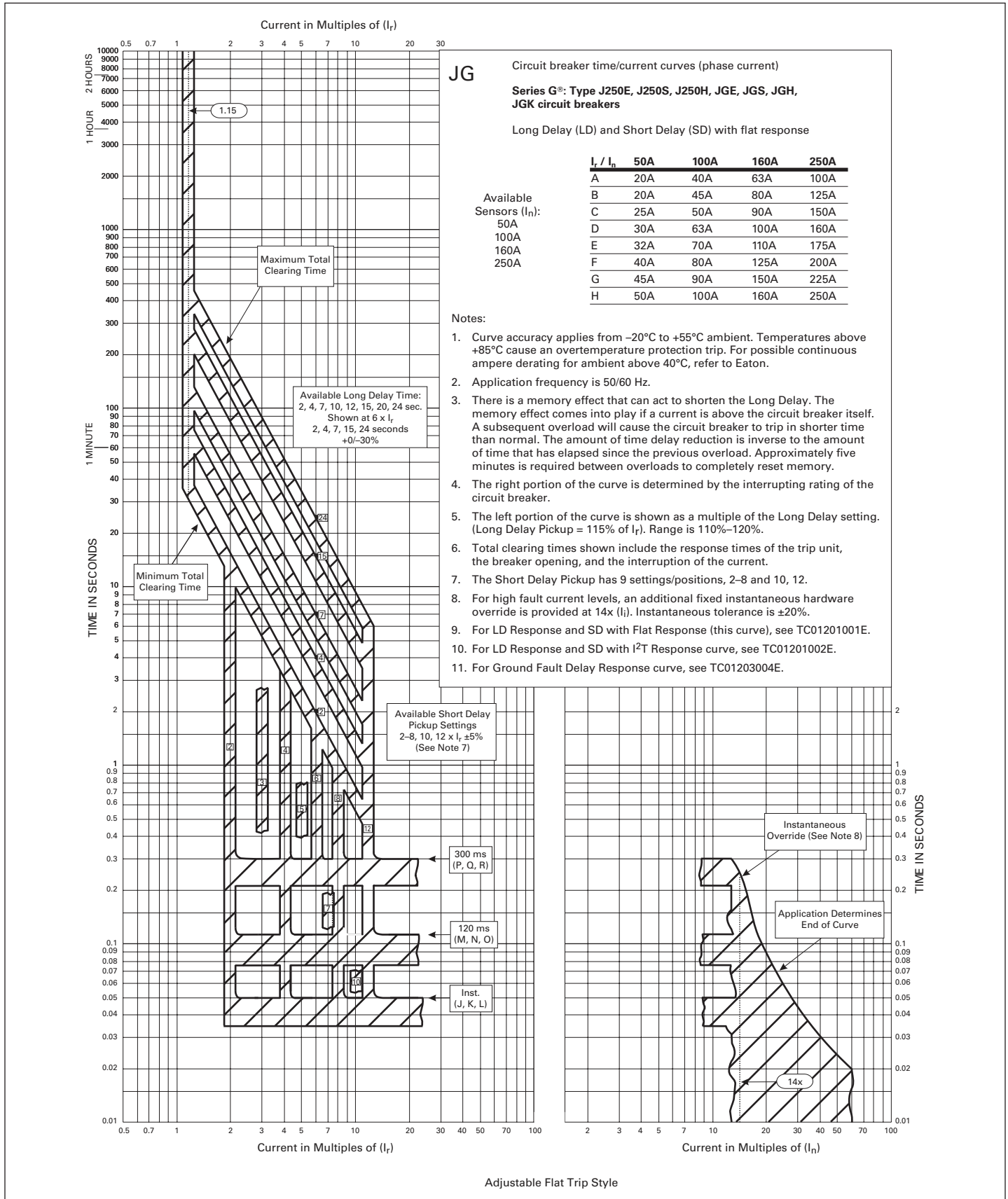


Figure 1. Long Delay Response and Short Delay with Flat Response Curve—Curve Number TC01201001E

Long delay response (LD) and short delay (SD) with I²T response curve

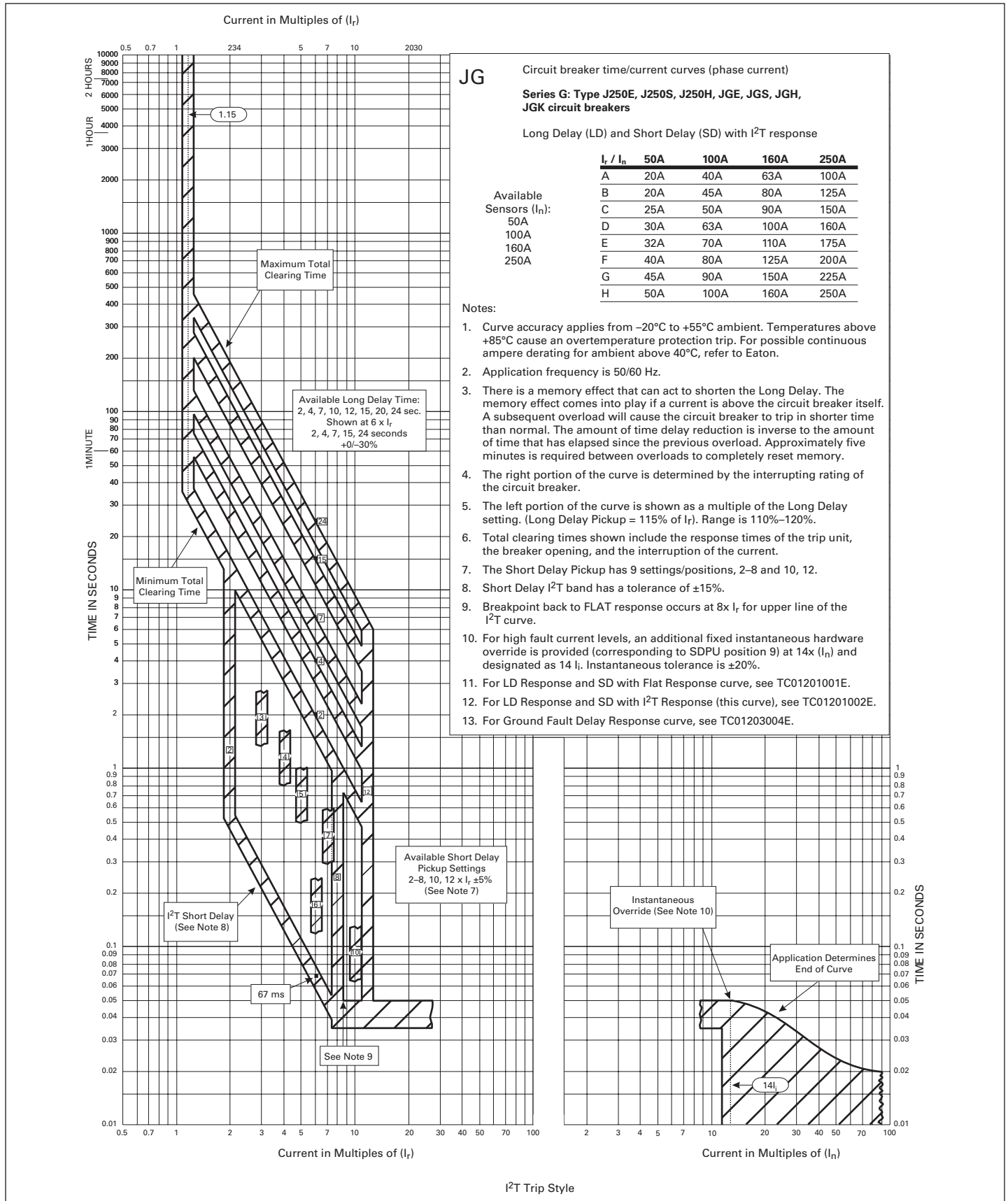


Figure 2. Long Delay Response and Short Delay with I²T Response Curve—Curve Number TC01201002E

Ground fault delay response curve

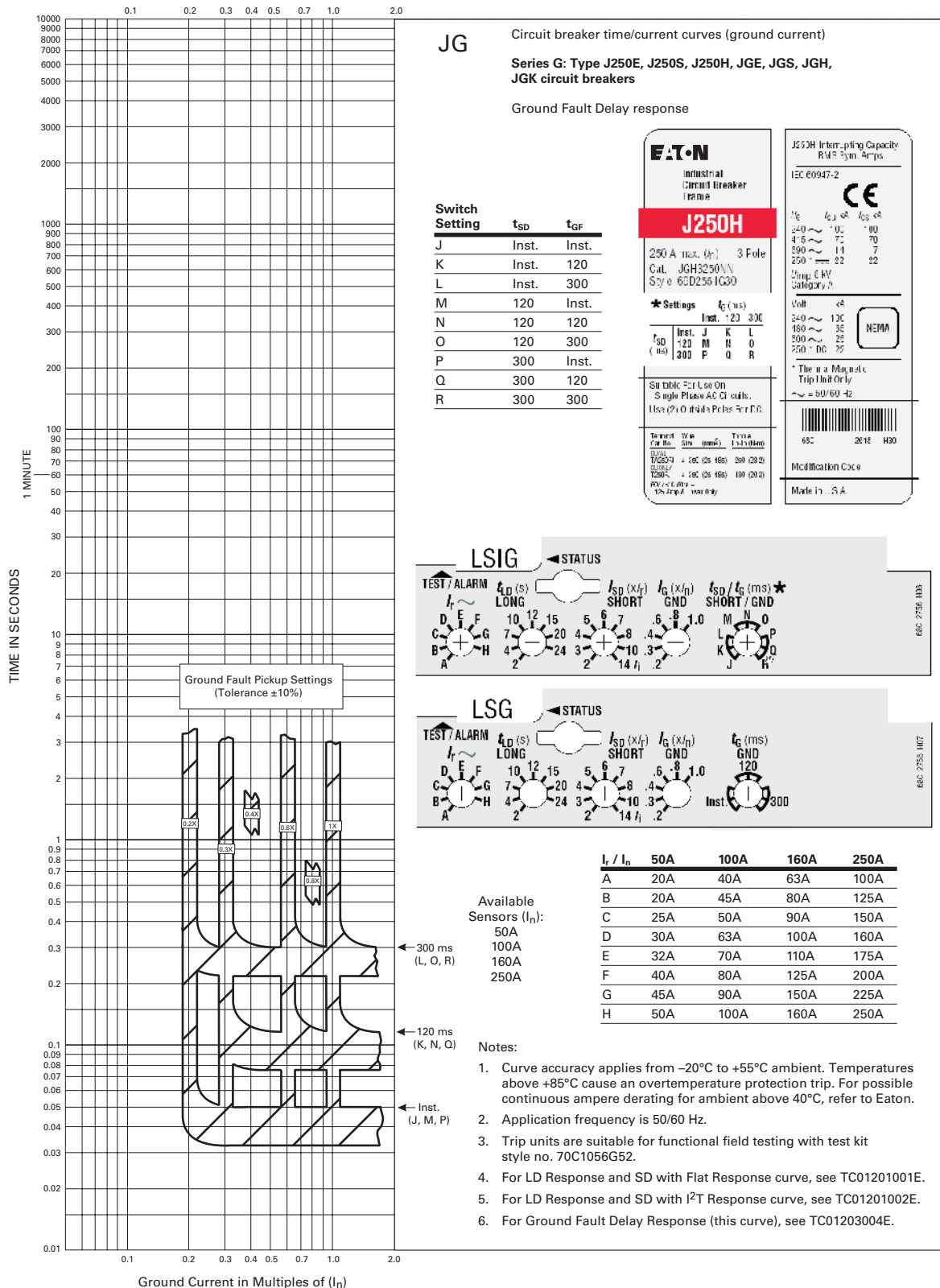


Figure 3. Ground Fault Delay Response Curve—Curve Number TC01203004E

Eaton Corporation
Electrical Sector
1111 Superior Avenue
Cleveland, OH 44114 USA
Eaton.com

© 2012 Eaton Corporation
All Rights Reserved
Printed in USA
Publication No. TC01204008E / Z12084
March 2012



Eaton is a registered trademark
of Eaton Corporation.

All other trademarks are property
of their respective owners.