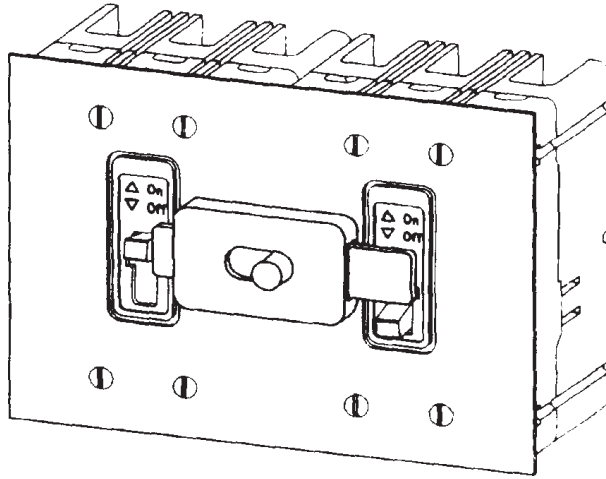


Installation Instructions for the Sliding Bar Interlock for 3-Pole F-Frame, and 2-and 3-Pole J- and K-Frame Series C Circuit Breakers and Molded Case Switches



Contents

Description	Page
1. Introduction	2
2. Installation	2



Powering Business Worldwide



WARNING

DO NOT ATTEMPT TO INSTALL OR PERFORM MAINTENANCE ON EQUIPMENT WHILE IT IS ENERGIZED. DEATH, SEVERE PERSONAL INJURY, OR SUBSTANTIAL PROPERTY DAMAGE CAN RESULT FROM CONTACT WITH ENERGIZED EQUIPMENT. ALWAYS VERIFY THAT NO VOLTAGE IS PRESENT BEFORE PROCEEDING WITH THE TASK, AND ALWAYS FOLLOW GENERALLY ACCEPTED SAFETY PROCEDURES.

EATON IS NOT LIABLE FOR THE MISAPPLICATION OR MISINSTALLATION OF ITS PRODUCTS.

The user is cautioned to observe all recommendations, warnings, and cautions relating to the safety of personnel and equipment, as well as, all general and local health and safety laws, codes, and procedures.

The recommendations and information contained herein are based on Eaton experience and judgement, but should not be considered to be all-inclusive or covering every application or circumstance which may arise. If any questions arise, contact Eaton for further information or instructions.

1. INTRODUCTION

General Information

The sliding bar interlock (Fig. 1-1) provides mechanical interlocking between two adjacent circuit breakers of the same pole configuration, preventing both circuit breakers from being switched to the ON position at the same time. The sliding bar interlock is secured to the outside of the enclosure cover between the circuit breakers. When the sliding bar interlock handle is moved from one side to the other, a bar extends to alternately block movement of the circuit breaker handles and prevents both circuit breakers being switched on at the same time. The sliding bar interlock is for field installation only. For this publication, the term circuit breaker shall also include molded case switch.

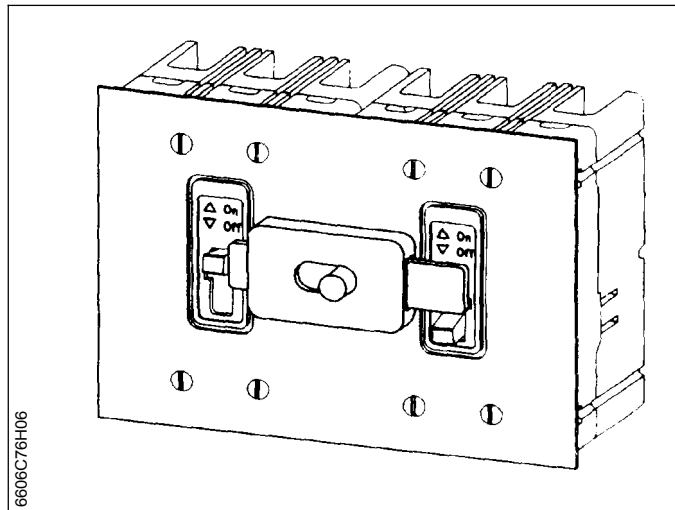


Fig. 1-1. Sliding Bar Interlock Installed Between Two F-Frame Series C Circuit Breakers.

This instruction leaflet (IL) gives detailed procedures for installing the sliding bar interlock.

Sliding Bar Interlock Catalog Numbers are:

- F-frame – SBK1
- J-frame – SBK2
- K-frame – SBK3

2. INSTALLATION

The sliding bar interlock can be used between two 3-Pole F-frame, and two 2- or 3-Pole J- or K-frame circuit breakers or molded case switches. The mounting panel must be drilled to correspond with the interlock spacing requirements. To install the sliding bar interlock, perform the following steps:



WARNING

BEFORE ATTEMPTING ANY WORK ON CIRCUIT BREAKERS INSTALLED IN AN ELECTRICAL SYSTEM, MAKE SURE THE CIRCUIT BREAKERS ARE SWITCHED TO THE OFF POSITION AND THAT THERE IS NO VOLTAGE PRESENT WHERE WORK IS

TO BE PERFORMED. SPECIAL ATTENTION SHOULD BE PAID TO REVERSE FEED APPLICATIONS TO ENSURE NO VOLTAGE IS PRESENT. THE VOLTAGES IN ENERGIZED EQUIPMENT CAN CAUSE SEVERE PERSONAL INJURY OR DEATH.

Note: Only the interlock for one particular frame size has been provided in each kit. These instructions, however, cover installation of an interlock for F-, J-, or K-frame circuit breakers.

2-1. Refer to drilling plans for F-, J-, or K-frame circuit breakers (Fig. 2-1, 2-2, or 2-3); drill and tap circuit breaker mounting panel.

Note: Circuit breakers are secured to mounting panel by hardware supplied with circuit breaker.

2-2. Mount both circuit breakers to mounting panel.

2-3. Refer to Fig. 2-4 (F-frame), 2-5 (J-frame), or 2-6 (K-frame) and cut out enclosure cover to correct circuit breaker and trip unit escutcheon (J-/K-frame) dimensions.

Note: Before doing the next step, determine the thickness of the enclosure front panel. Table 2-1 gives hole sizes for the various thicknesses of enclosure front panels.

Table 2-1. Drilling Details for Enclosure Front Panels in Inches (Millimeters).

Panel Thickness	Size (Dia.) ①
.125 (3.17)	.257 (6.53)
.188 (4.77)	.201 (5.10)

① Countersink holes 82° to .475 (12.06) Dia.

2-4. Referring to Fig. 2-4, 2-5, or 2-6, and Table 2-1, drill and countersink four interlock mounting holes in the back of the enclosure front panel.

2-5. Mount the components of the interlock in the following manner (Fig. 2-7):

- a. Insert one .190-32 inch flat head, countersunk screw with lockwasher through one interlock mounting hole in the enclosure front panel.

Note: The .053-inch (1.35 mm.) spacer is only for use with F- and J-frame circuit breakers installed in enclosures with a front panel thickness of .125 inch (3.17 mm.). This spacer should be discarded when the panel thickness is .188-inch (4.77 mm).

The .125-inch (3.17 mm) spacer is only for use with K-frame circuit breakers installed in enclosures with a front panel thickness of .125-inch (3.17 mm). This spacer should be discarded when the panel thickness is .188-inch (4.77 mm).

- b. When the front panel thickness is .125-inch (3.17 mm), select the correct spacer and position over the mounting screw.

Note: The .081-inch (2.06 mm) slotted spacer is for use with F- and J-frame circuit breakers.

The .094-inch (2.39 mm) slotted spacer is for use with K-frame circuit breakers.

- c. Select the correct slotted spacer for the circuit breakers in use and position over the mounting screw.
- d. Position the wave spring in the slotted spacer with the central crest towards the enclosure panel.
- e. Position the slider and knob assembly in the housing with the knob through the slot in the housing.
- f. Hold the slider and knob assembly and housing against the spacer(s) and wave spring. Thread the screw into the housing.
- g. Thread the three remaining flat head, countersunk screws and lockwashers into the housing. Tighten the four mounting screws.

2-6. Carry out functional check. Make sure that both circuit breakers cannot be switched to the ON position at the same time; also, confirm that each circuit breaker can be closed when the other is open.

2-7. Connect circuit breakers as required.

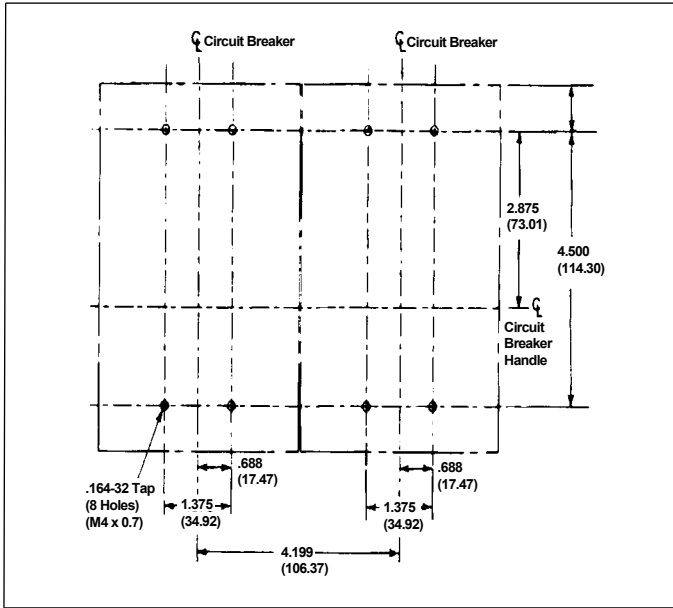


Fig. 2-1. F-Frame Circuit Breaker Mounting Bolt Drilling Plan.

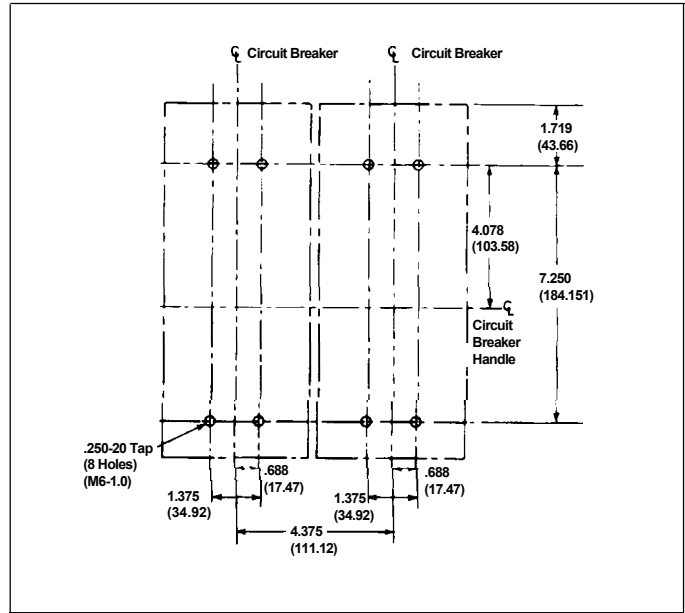


Fig. 2-2. J-Frame Circuit Breaker Mounting Bolt Drilling Plan.

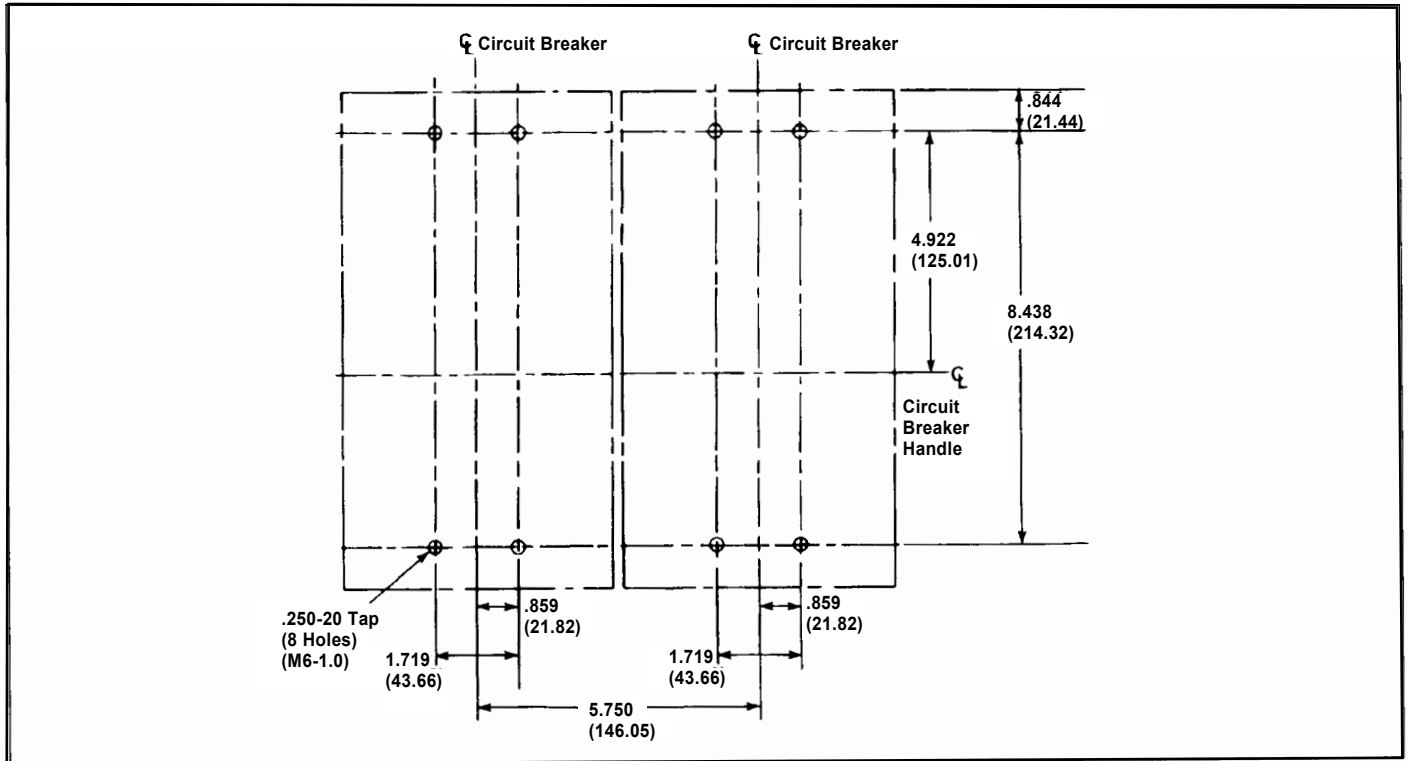


Fig. 2-3 K-Frame Circuit Breaker Mounting Bolt Drilling Plan.

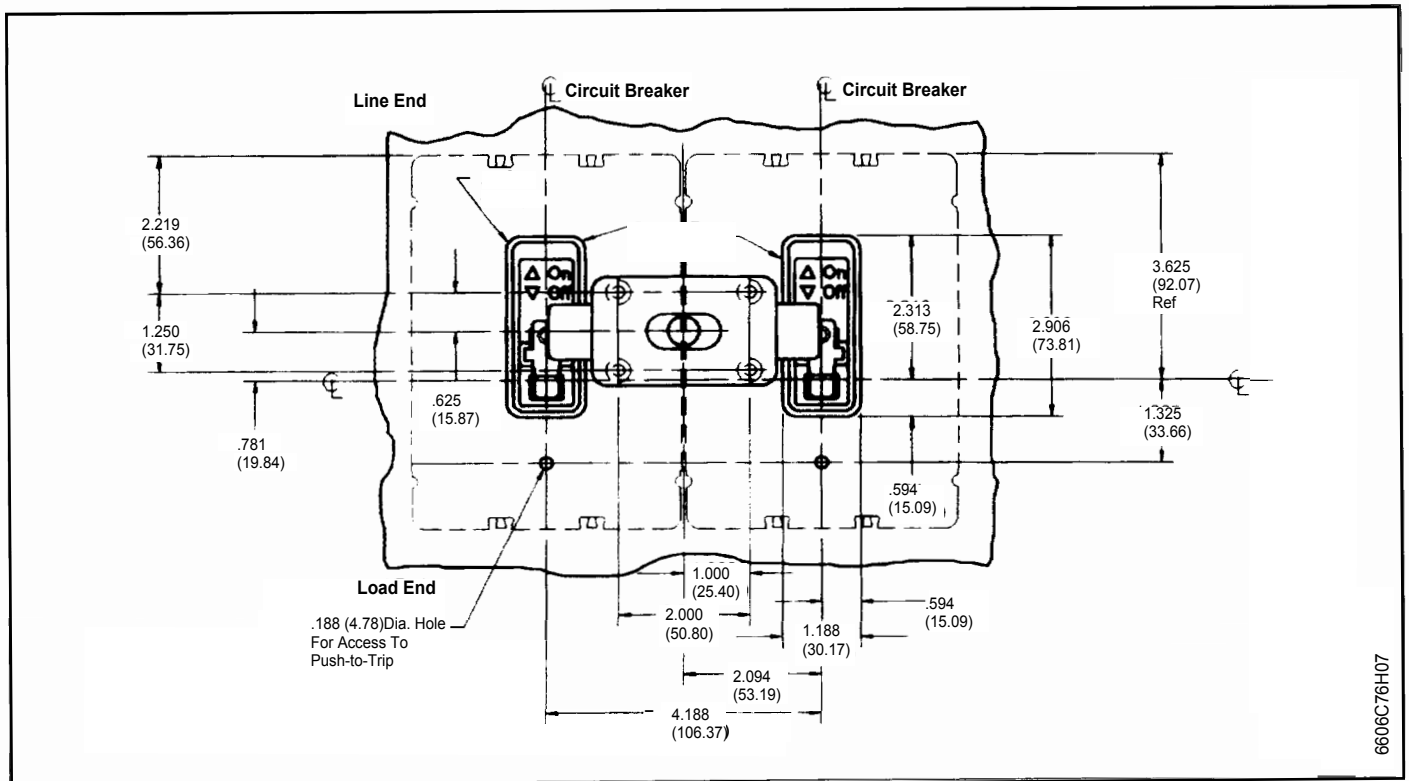


Fig. 2-4 F-Frame Sliding Bar Interlock Installation Details.

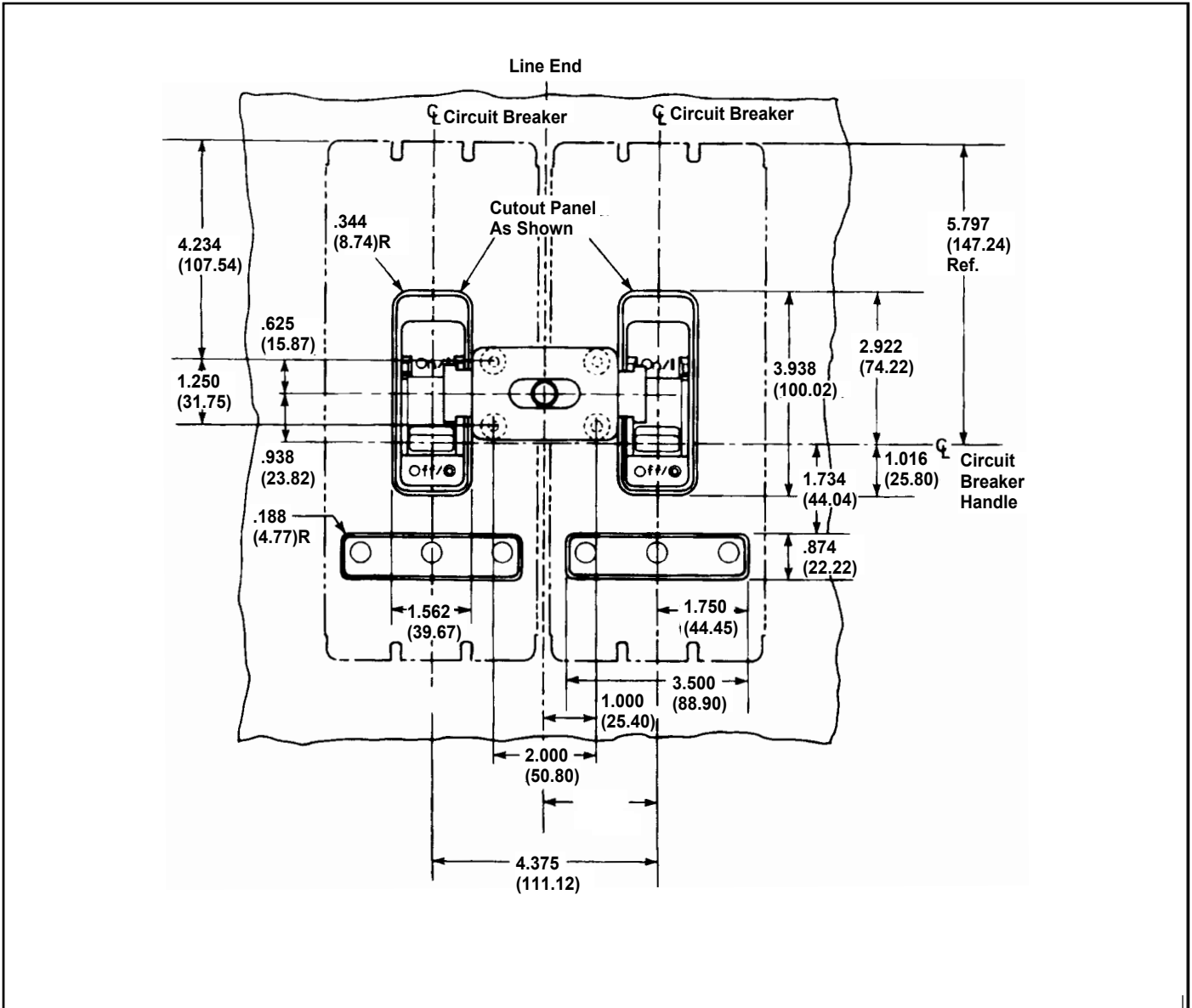


Fig. 2-5 J-Frame Sliding Bar Interlock Installation Details.

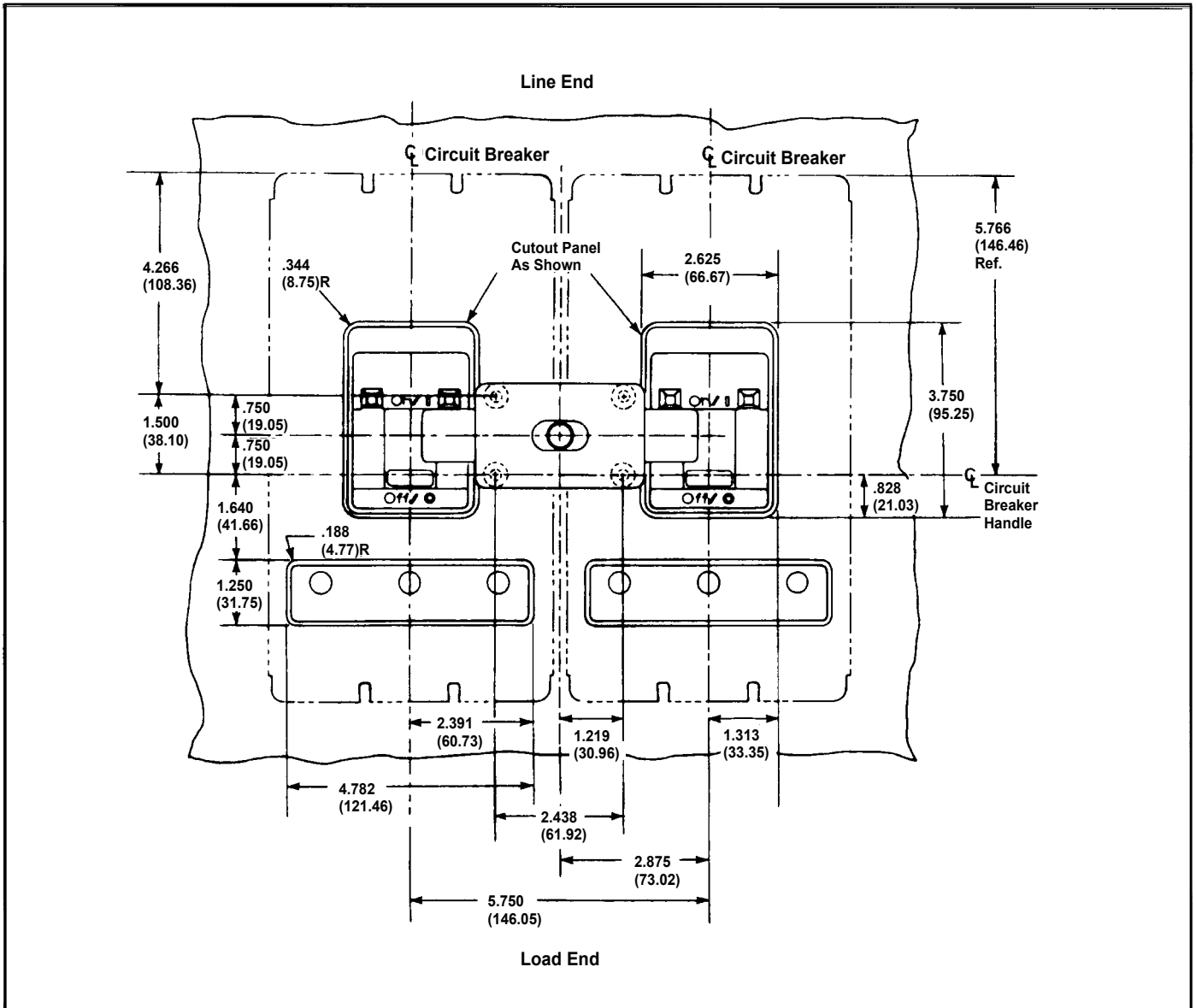


Fig. 2-6 K-Frame Sliding Bar Interlock Installation Details.

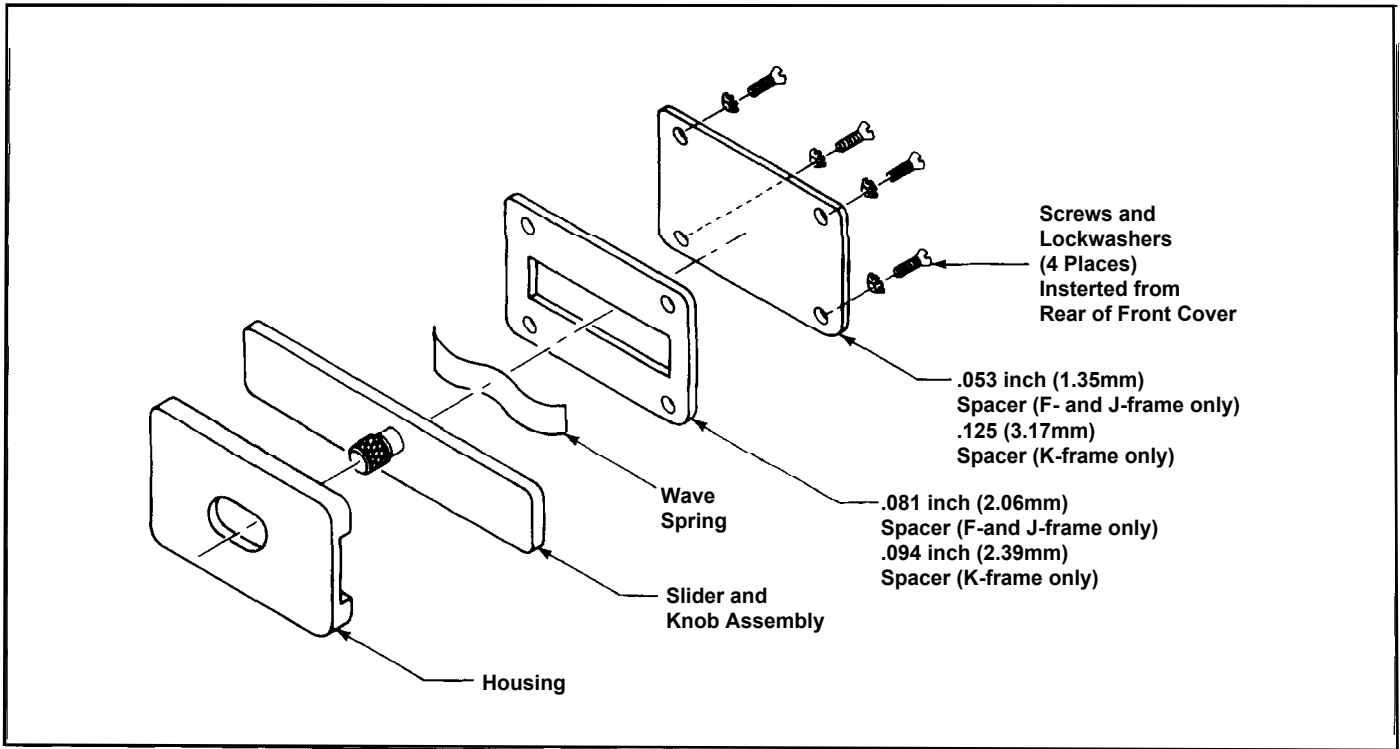


Fig. 2-7. Assembly Sequence of Sliding Bar Interlock Components.

Installation Instructions for the Sliding Bar Interlock for
3-Pole F-Frame, and 2- and 3-Pole J- and K-Frame
Series C Circuit Breakers and Molded Case Switches

Instruction Leaflet IL29C310C
Effective December 2011

Notes:

Notes:

Installation Instructions for the Sliding Bar Interlock for
3-Pole F-Frame, and 2-and 3-Pole J- and K-Frame
Series C Circuit Breakers and Molded Case Switches

Instruction Leaflet IL29C310C
Effective December 2011

Notes:

The instructions for installation, testing, maintenance, or repair herein are provided for the use of the product in general commercial applications and may not be appropriate for use in nuclear applications. Additional instructions may be available upon specific request to replace, amend, or supplement these instructions to qualify them for use with the product in safety-related applications in a nuclear facility.

This Instruction Booklet is published solely for information purposes and should not be considered all-inclusive. If further information is required, you should consult an authorized Eaton sales representative.

The sale of the product shown in this literature is subject to the terms and conditions outlined in appropriate Eaton selling policies or other contractual agreement between the parties. This literature is not intended to and does not enlarge or add to any such contract. The sole source governing the rights and remedies of any purchaser of this equipment is the contract between the purchaser and Eaton.

NO WARRANTIES, EXPRESSED OR IMPLIED, INCLUDING WARRANTIES OF FITNESS FOR A PARTICULAR PURPOSE OR MERCHANTABILITY, OR WARRANTIES ARISING FROM COURSE OF DEALING OR USAGE OF TRADE, ARE MADE REGARDING THE INFORMATION, RECOMMENDATIONS, AND DESCRIPTIONS CONTAINED HEREIN.

In no event will Eaton be responsible to the purchaser or user in contract, in tort (including negligence), strict liability or otherwise for any special, indirect, incidental or consequential damage or loss whatsoever, including but not limited to damage or loss of use of equipment, plant or power system, cost of capital, loss of power, additional expenses in the use of existing power facilities, or claims against the purchaser or user by its customers resulting from the use of the information, recommendations and description contained herein.

Eaton Corporation
Electrical Sector
1111 Superior Ave.
Cleveland, OH 44114
United States
877-ETN-CARE (877-386-2273)
Eaton.com

© 2011 Eaton Corporation
All Rights Reserved
Printed in USA
Publication No. IL29C310C / TBG000773
Part No. 6620C54H03
December 2011