

## Instructions for Plug-In Support Block Assembly for JB, KB, HKB and MCP-5 (250 Amp) JD, JDB, HJD, JDC and HMCP250

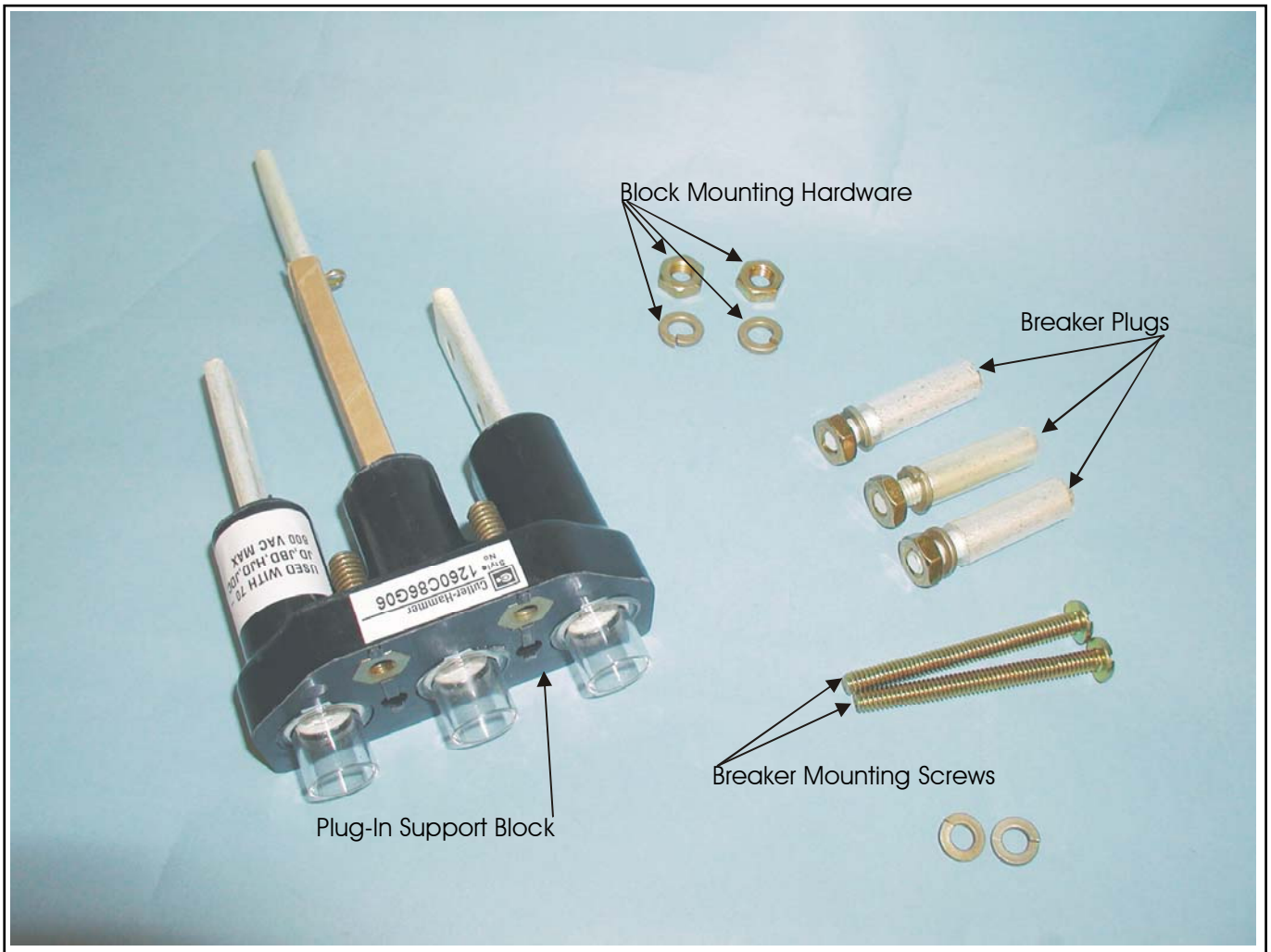


Fig. 1 — *Support Block Assembly*



### WARNING

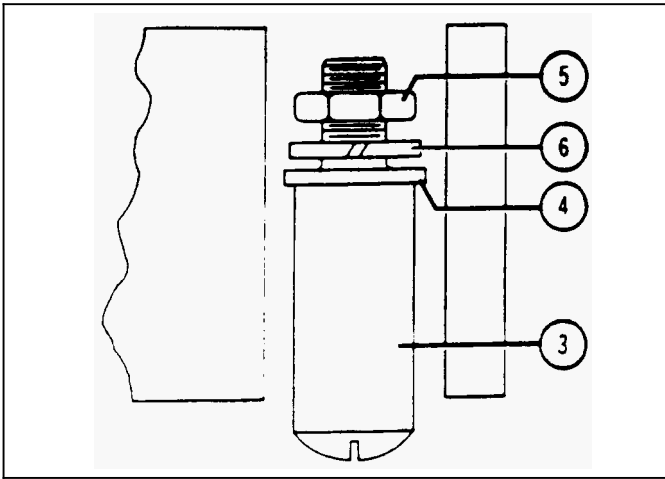
**DO NOT ATTEMPT TO INSTALL OR PERFORM MAINTENANCE ON EQUIPMENT WHILE IT IS ENERGIZED. DEATH, SEVERE PERSONAL INJURY, OR SUBSTANTIAL PROPERTY DAMAGE CAN RESULT FROM CON-**

**TACT WITH ENERGIZED EQUIPMENT. ALWAYS VERIFY THAT NO VOLTAGE IS PRESENT BEFORE PROCEEDING WITH THE TASK, AND ALWAYS FOLLOW GENERALLY ACCEPTED SAFETY PROCEDURES.**

**CUTLER-HAMMER IS NOT LIABLE FOR THE MISAPPLICATION OR MISINSTALLATION OF ITS PRODUCTS.**

Refer to Table For Proper Mounting Screws.

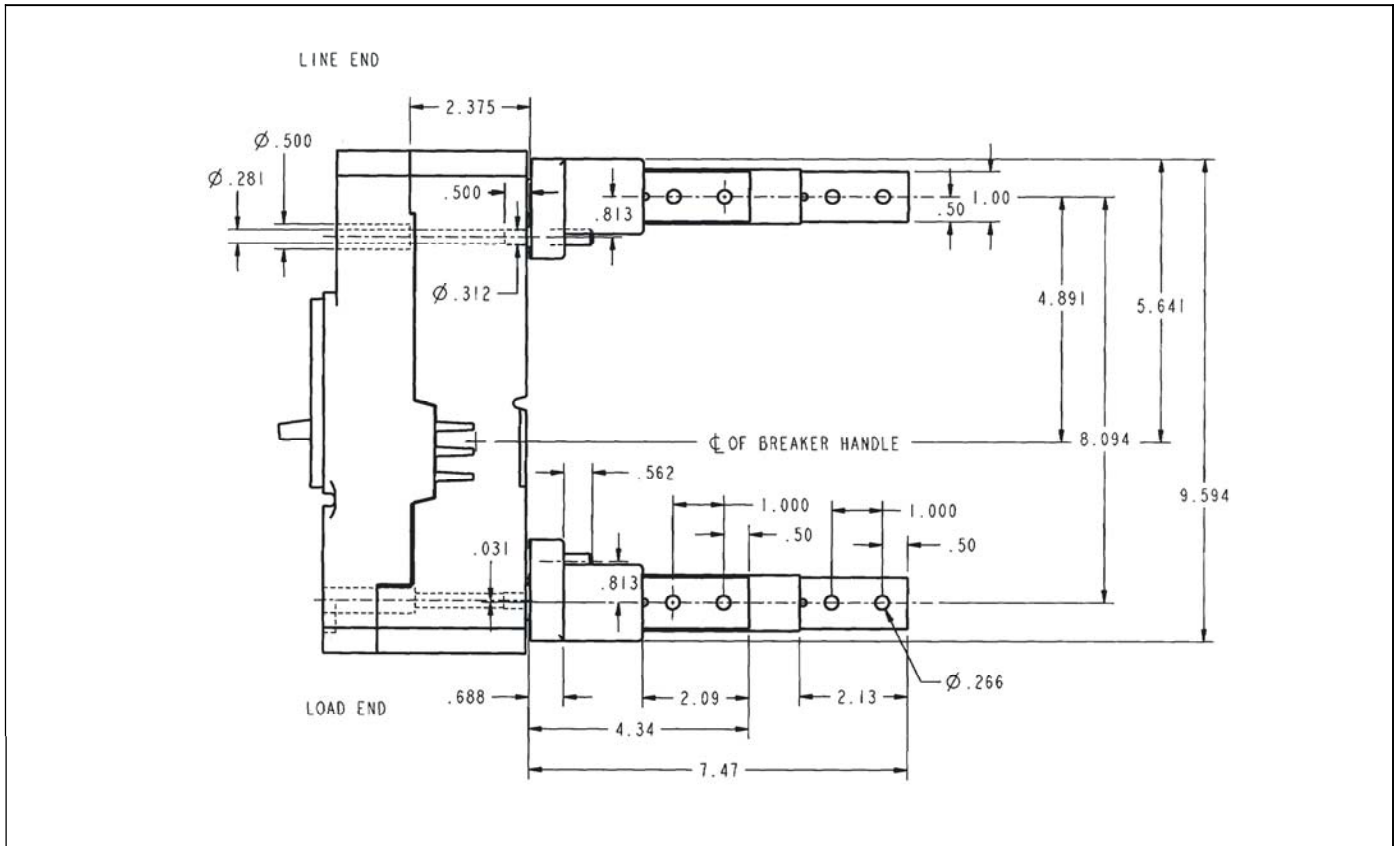
**INSTALLATION - PLUG-IN SUPPORT BLOCK**



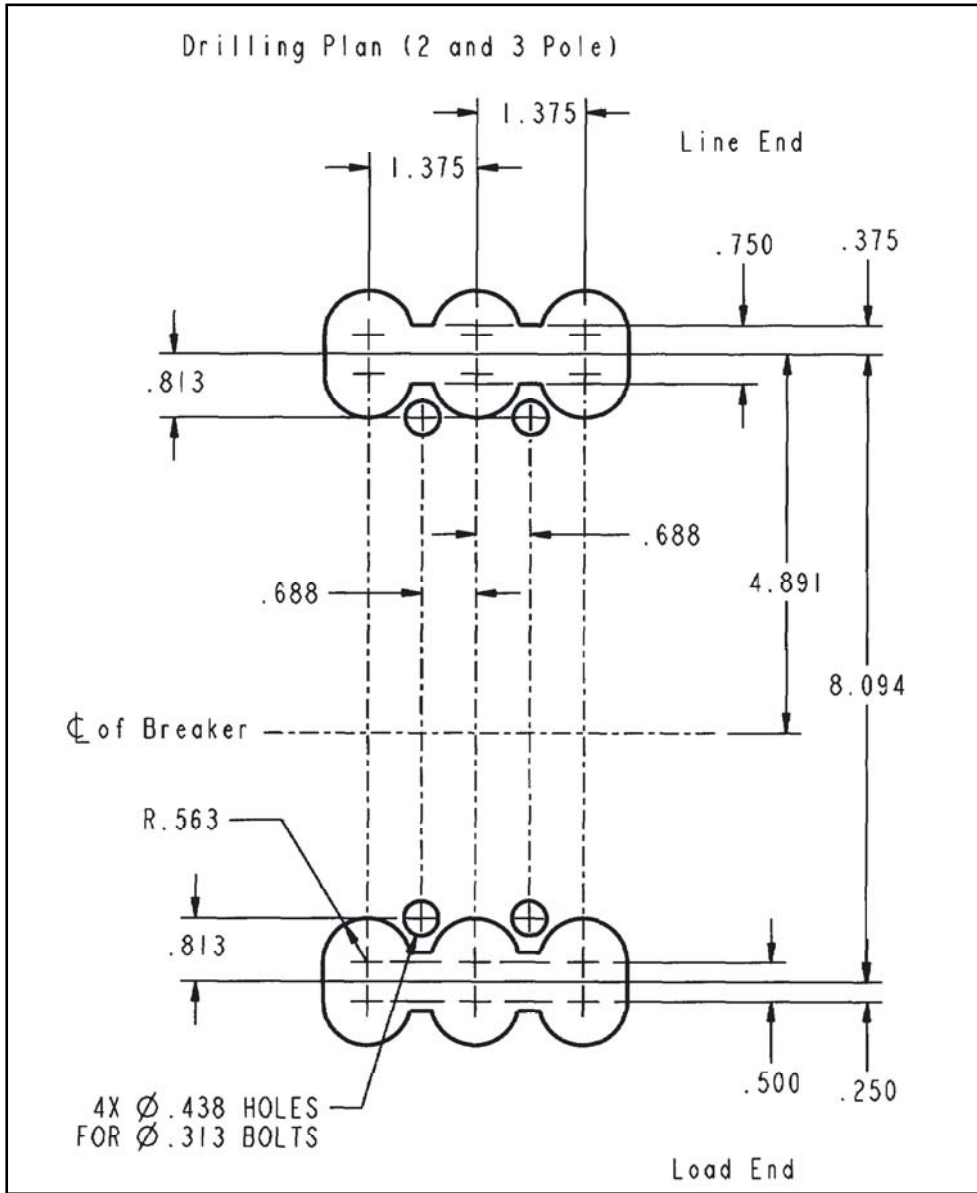
Refer to Figure 2 and assemble plug (3) to the lower side of the breaker conductor, (4) and positioned to the inner most slotted portion, of the breaker conductor "Closest to Breaker Mechanism" and secure in place with nut (5) and washer (6).. Torque nut (5) to a maximum of 8 ft. lbs. (10.85 N-m) max.

Mount the Plug-In Support Block using the block mounting hardware. Torque the nut to 10 ft lbs (13.56 N-m) max.

**Fig. 2 — Installation - Plug-In Support Block**



**Fig. 3 — Support Block Assembled to Breaker**



**Drawout Studs**

TABLE OF MOUNTING SCREWS			
FRAME	LOCATION	SCREW	TORQUE
JB, KB, HKB, MCP-5	LINE	1/4-20X 3-7/8	28.0 IN-LB (3.16 N-m)MAX
	LOAD	1/4-20X 4-1/2	28.0 IN-LB (3.16 N-m)MAX
JD, JDB, HJD, JDC, HMCP 250	LINE	1/4-20X 2-3/4	28.0 IN-LB (3.16 N-m)MAX
	LOAD	1/4-20X 3-1/2	28.0 IN-LB (3.16 N-m)MAX

NOTES

Eaton Corporation  
Cutler-Hammer business unit  
170 Industry Drive, RIDC Park West  
Pittsburgh, Pennsylvania 15275  
U.S.A.  
tel: 1-800-525-2000  
[www.cutler-hammer.com](http://www.cutler-hammer.com)

© 2001 Eaton Corporation  
All rights Reserved  
Printed in USA/TCQ  
Style No. 69C0665H07  
Effective March 2009