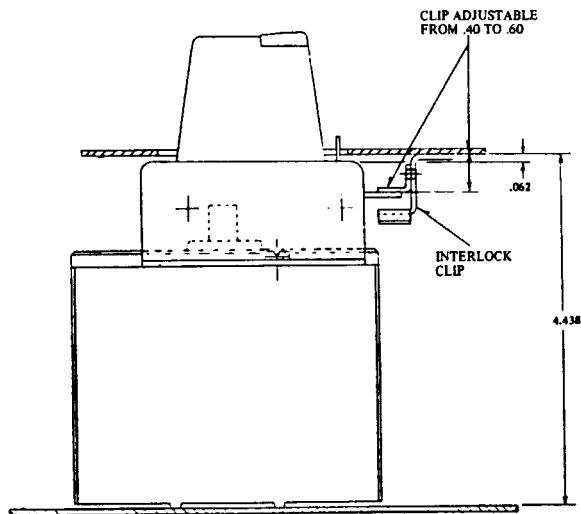
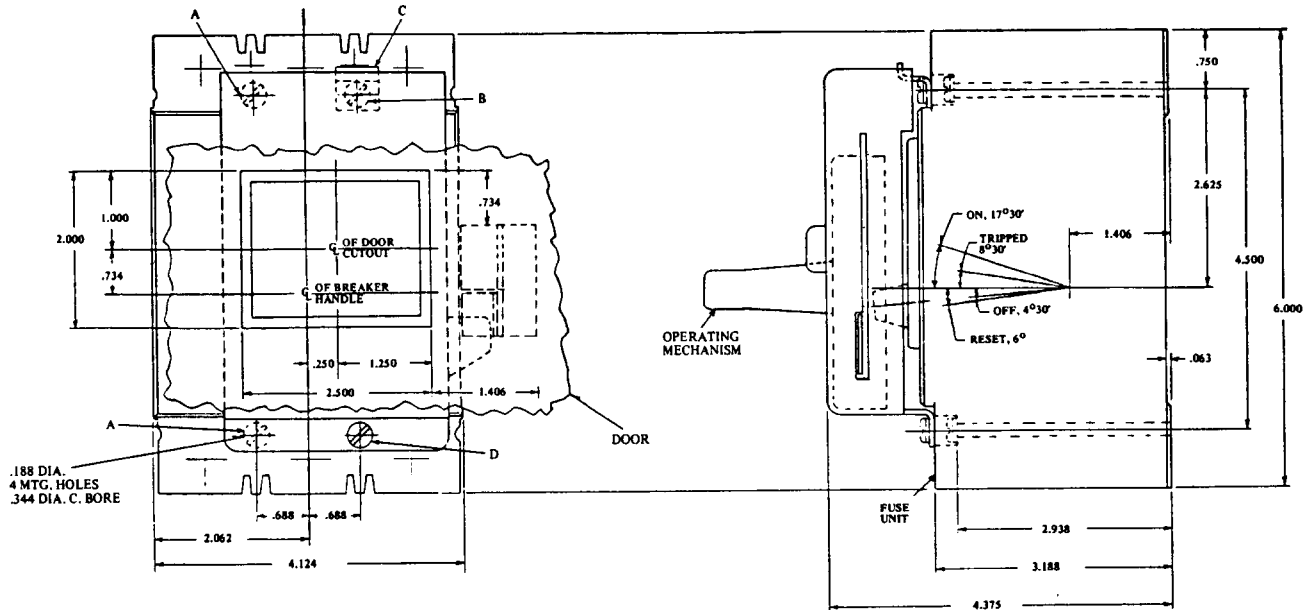




# Type MC Operating Mechanism for Use with Type EB, EHB, FB, EHD, FDB, FD, HFD, FDC, FW, HFW, FWC and MCP Circuit Breakers

## INSTRUCTIONS FOR MOUNTING



## WARNING

CONTACT WITH ENERGIZED EQUIPMENT CAN RESULT IN DEATH, SEVERE PERSONAL INJURY, OR SUBSTANTIAL PROPERTY DAMAGE. DO NOT ATTEMPT TO INSTALL OR PERFORM MAINTENANCE ON EQUIPMENT WHILE IT IS ENERGIZED. ALWAYS VERIFY THAT NO VOLTAGE IS PRESENT BEFORE PROCEEDING WITH THE TASK, AND ALWAYS FOLLOW GENERALLY ACCEPTED SAFETY PROCEDURES.

CUTLER-HAMMER IS NOT LIABLE FOR THE MISAPPLICATION OR MISINSTALLATION OF ITS PRODUCTS.

The user is cautioned to observe all recommendations, warnings, and cautions relating to the safety of personnel and equipment as well as all general and local health and safety laws, codes, and procedures.

The recommendations and information contained herein are based on Cutler-Hammer experience and judgement, but should not be considered to be all-inclusive or covering every application or circumstance which may arise. If any questions arise, contact Cutler-Hammer for further information or instructions.

1. Be sure breaker is in *Off* position.
2. Mount FB breaker to panel with .164-32 x 3.188 pan screws, or FD breaker to panel with .164-32 x 1.50 pan screws and washers (A).
3. Mount hinge (C) with .164-32 x 3.500 pan screw and washer (B).
4. Assemble Type MC operating mechanism to hinge (C) as shown and secure with .164-32 x 3.500 pan screw and washer (D).

**Cutler-Hammer**

Pittsburgh, Pennsylvania U.S.A.

Style No. 69C0712H04 Effective September 1998  
Printed in U.S.A./CCI

