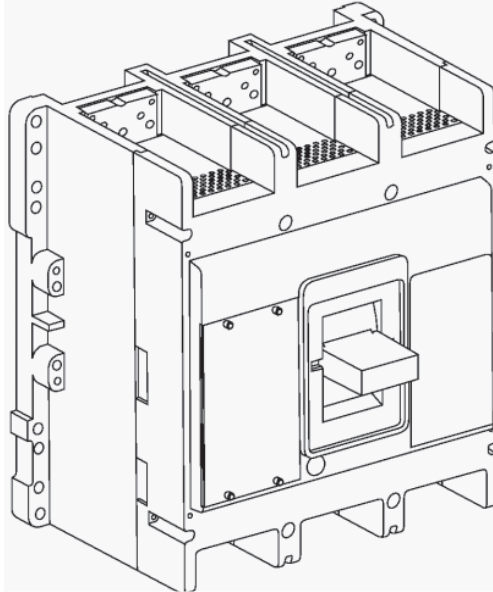


Installation Instructions for the Walking Beam Interlock for PD6 Circuit Breakers and Molded Case Switches



Contents

Description	Page
1. Introduction	2
2. Installation	2
3. Adjustment	2

Cat # PDG6XWBI3P

**WARNING**

DO NOT ATTEMPT TO INSTALL OR PERFORM MAINTENANCE ON EQUIPMENT WHILE IT IS ENERGIZED. DEATH, SEVERE PERSONAL INJURY, OR SUBSTANTIAL PROPERTY DAMAGE CAN RESULT FROM CONTACT WITH ENERGIZED EQUIPMENT. ALWAYS VERIFY THAT NO VOLTAGE IS PRESENT BEFORE PROCEEDING WITH THE TASK, AND ALWAYS FOLLOW GENERALLY ACCEPTED SAFETY PROCEDURES.

EATON IS NOT LIABLE FOR THE MISAPPLICATION OR MISINSTALLATION OF ITS PRODUCTS.

The user is cautioned to observe all recommendations, warnings, and cautions relating to the safety of personnel and equipment, as well as, all general and local health and safety laws, codes, and procedures.

The recommendations and information contained herein are based on Eaton experience and judgement, but should not be considered to be all-inclusive or covering every application or circumstance which may arise. If any questions arise, contact Eaton for further information or instructions.

1. INTRODUCTION**General Information**

The walking beam interlock (Fig. 1-1) provides mechanical interlocking between two adjacent PD6 3-Pole breakers to prevent both circuit breakers from being switched ON at the same time. The walking beam interlock assembly is bolted to the rear of the customer's mounting panel. The circuit breakers are then aligned with the mounting panel such that the plungers enter the holes in the back of the breakers as they are secured. Adjustment of the plungers is necessary. Mounting panels that are at least one inch thick are suggested.

Note: Factory modified circuit breakers must be ordered to install the walking beam interlock.

This instruction leaflet (IL) gives detailed procedures for installing the walking beam interlock.

2. INSTALLATION

The walking beam interlock assembly must be mounted before the circuit breakers are connected to an electrical system. Installation consists of drilling the mounting panel to accept the circuit breakers and walking beam assembly, installing the walking beam assembly to the panel, and then mounting the circuit breakers to the panel.

- 2-1. Drill the breaker mounting panel using the dimensions which are provided in Fig 2-1 for mounting the breakers and the walking beam interlock assembly. Dimensions are given in inches and (millimeters).
- 2-2. Install the walking beam assembly to the panel using 3/8 inch hardware per Figure 2-2. A one inch panel is illustrated; a thinner panel is not recommended because, sufficient thickness is needed in order to recess the bolt heads to allow the breakers to be mounted properly.
- 2-3. Mount the circuit breakers to the front surface of the mounting panel using 3/8 inch hardware. The breakers must be aligned carefully so the plungers enter into the holes in the back of the circuit breakers.

3. ADJUSTMENT

The walking beam interlock must be adjusted before the circuit breakers are connected to an electrical system. Carry out these adjustment procedures as follow:

- 3-1. Turn one circuit breaker to the ON position and the other to the OFF position.
- 3-2. Adjust the locknuts on each plunger assembly until there is 1/16 to 3/16 inch free travel of the plungers with either breaker closed. Align the plungers for free operation of the interlock with the beam in any position, with no interference or rubbing which may prevent proper functioning or abnormal wear of the walking beam parts. Torque the locknuts to 10 - 12 ft-lb.

**WARNING**

BEFORE ATTEMPTING ANY WORK ON CIRCUIT BREAKERS INSTALLED IN AN ELECTRICAL SYSTEM, MAKE SURE THE CIRCUIT BREAKERS ARE SWITCHED TO THE OFF POSITION AND THAT THERE IS NO VOLTAGE PRESENT WHERE WORK IS TO BE PERFORMED. SPECIAL ATTENTION SHOULD BE PAID TO REVERSE FEED APPLICATIONS TO ENSURE NO VOLTAGE IS PRESENT. THE VOLTAGES IN ENERGIZED EQUIPMENT CAN CAUSE SEVERE PERSONAL INJURY OR DEATH.

3. ADJUSTMENT (Continued)

3-3. Carry out a functional check as follows:

- a. Make sure that both breakers cannot be switched to the ON position at the same time.
- b. Open one circuit breaker. Make sure the other breaker will close.
- c. Reverse the open and close operations.

3-4. Connect both circuit breakers as required.

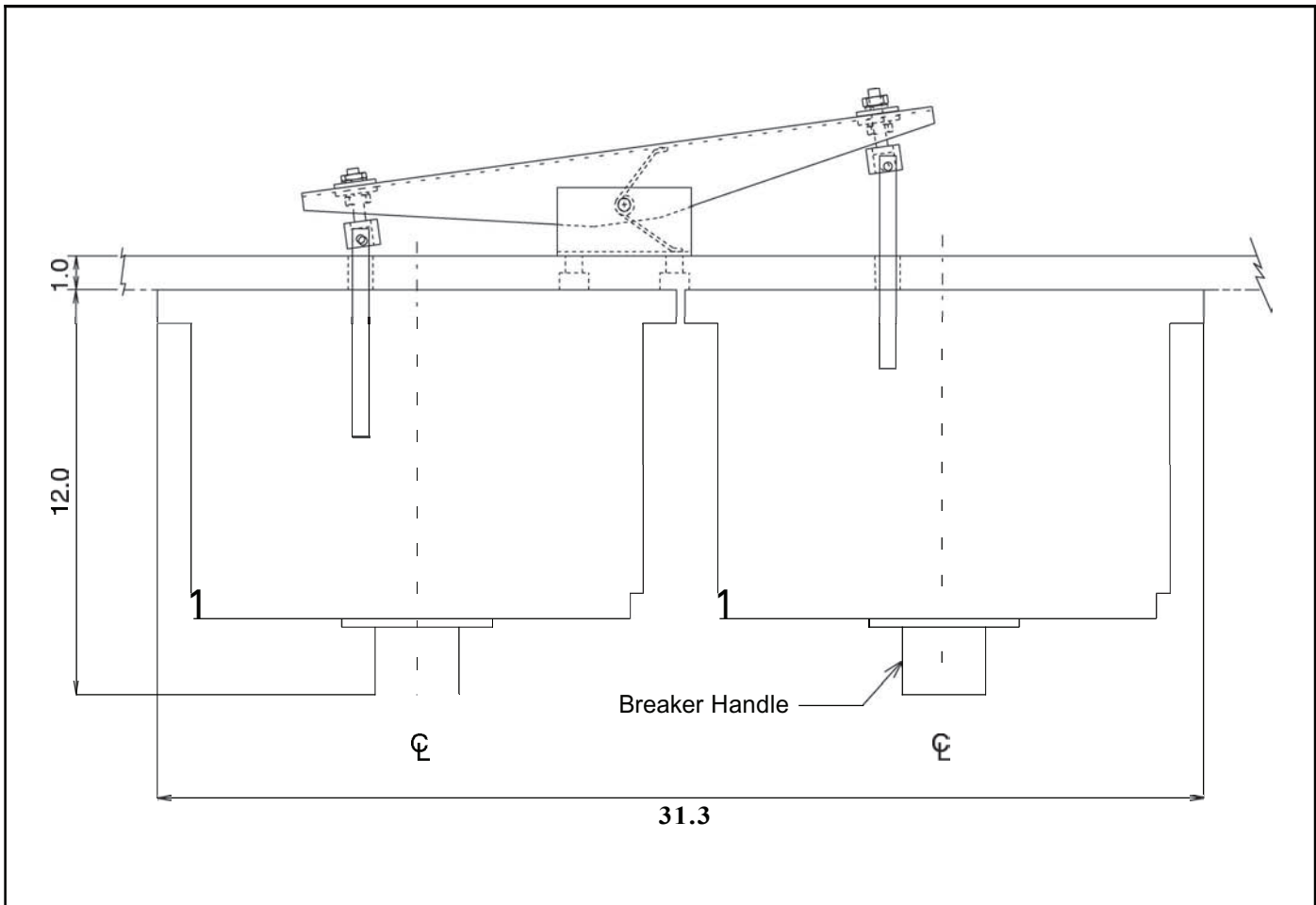


Fig. 2-2 Top View of Walking Beam Assembly

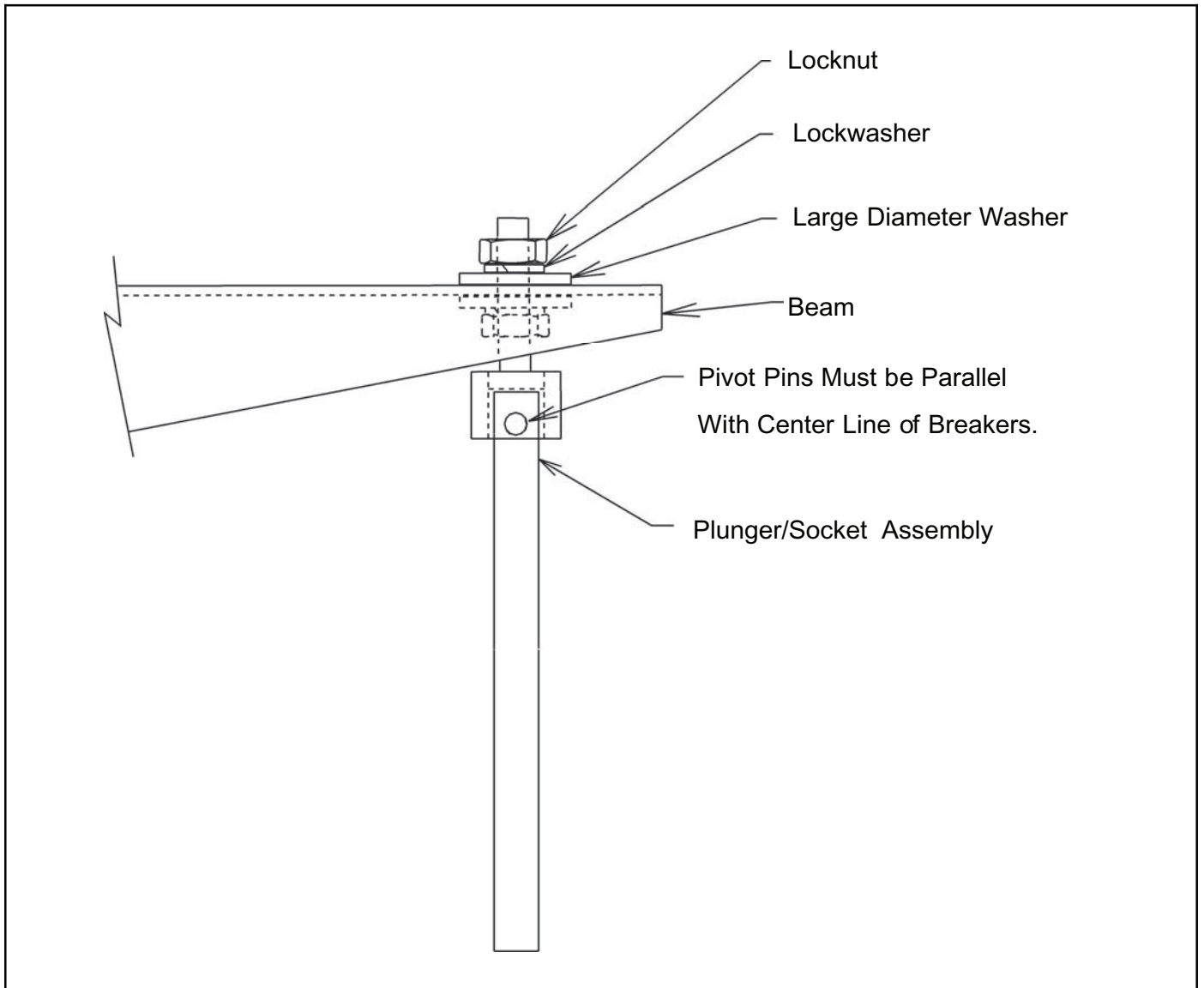


Fig. 2-3 Assembly of Plunger/Socket to Beam

The instructions for installation, testing, maintenance, or repair herein are provided for the use of the product in general commercial applications and may not be appropriate for use in nuclear applications. Additional instructions may be available upon specific request to replace, amend, or supplement these instructions to qualify them for use with the product in safety-related applications in a nuclear facility.

This Instruction Booklet is published solely for information purposes and should not be considered all-inclusive. If further information is required, you should consult an authorized Eaton sales representative.

The sale of the product shown in this literature is subject to the terms and conditions outlined in appropriate Eaton selling policies or other contractual agreement between the parties. This literature is not intended to and does not enlarge or add to any such contract. The sole source governing the rights and remedies of any purchaser of this equipment is the contract between the purchaser and Eaton.

NO WARRANTIES, EXPRESSED OR IMPLIED, INCLUDING WARRANTIES OF FITNESS FOR A PARTICULAR PURPOSE OR MERCHANTABILITY, OR WARRANTIES ARISING FROM COURSE OF DEALING OR USAGE OF TRADE, ARE MADE REGARDING THE INFORMATION, RECOMMENDATIONS, AND DESCRIPTIONS CONTAINED HEREIN.

In no event will Eaton be responsible to the purchaser or user in contract, in tort (including negligence), strict liability or otherwise for any special, indirect, incidental or consequential damage or loss whatsoever, including but not limited to damage or loss of use of equipment, plant or power system, cost of capital, loss of power, additional expenses in the use of existing power facilities, or claims against the purchaser or user by its customers resulting from the use of the information, recommendations and description contained herein.

Eaton
1000 Eaton Boulevard
Cleveland, OH 44122
United States
Eaton.com

© 2019 Eaton
All Rights Reserved
Printed in USA
Publication No. IL012286EN
Part No. IL012286EN H01