

Molded-case circuit breakers engine generator

Contents

Description	Page
Type FG 15–225A Three-Pole	2
Type JG 175–250A Three-Pole	4
Type KG 300–400A Three-Pole	6
Type LG 450–600A Three-Pole	8
Type MG 700–800A Three-Pole	10
Type NG 900–1200A Three-Pole	12



Powering Business Worldwide

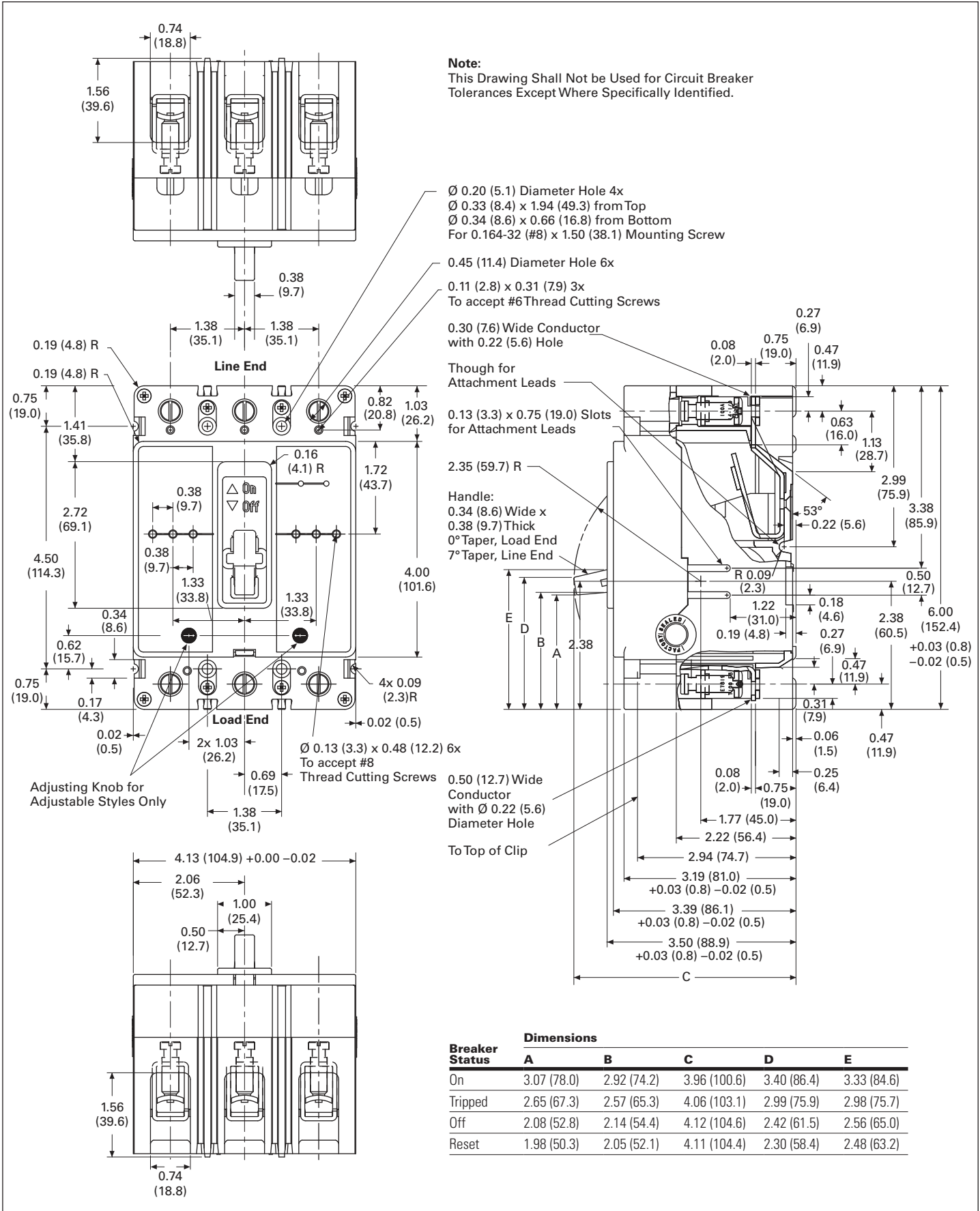


Figure 1. Type FG 15-225A Three-Pole—Dimensions in Inches (mm)

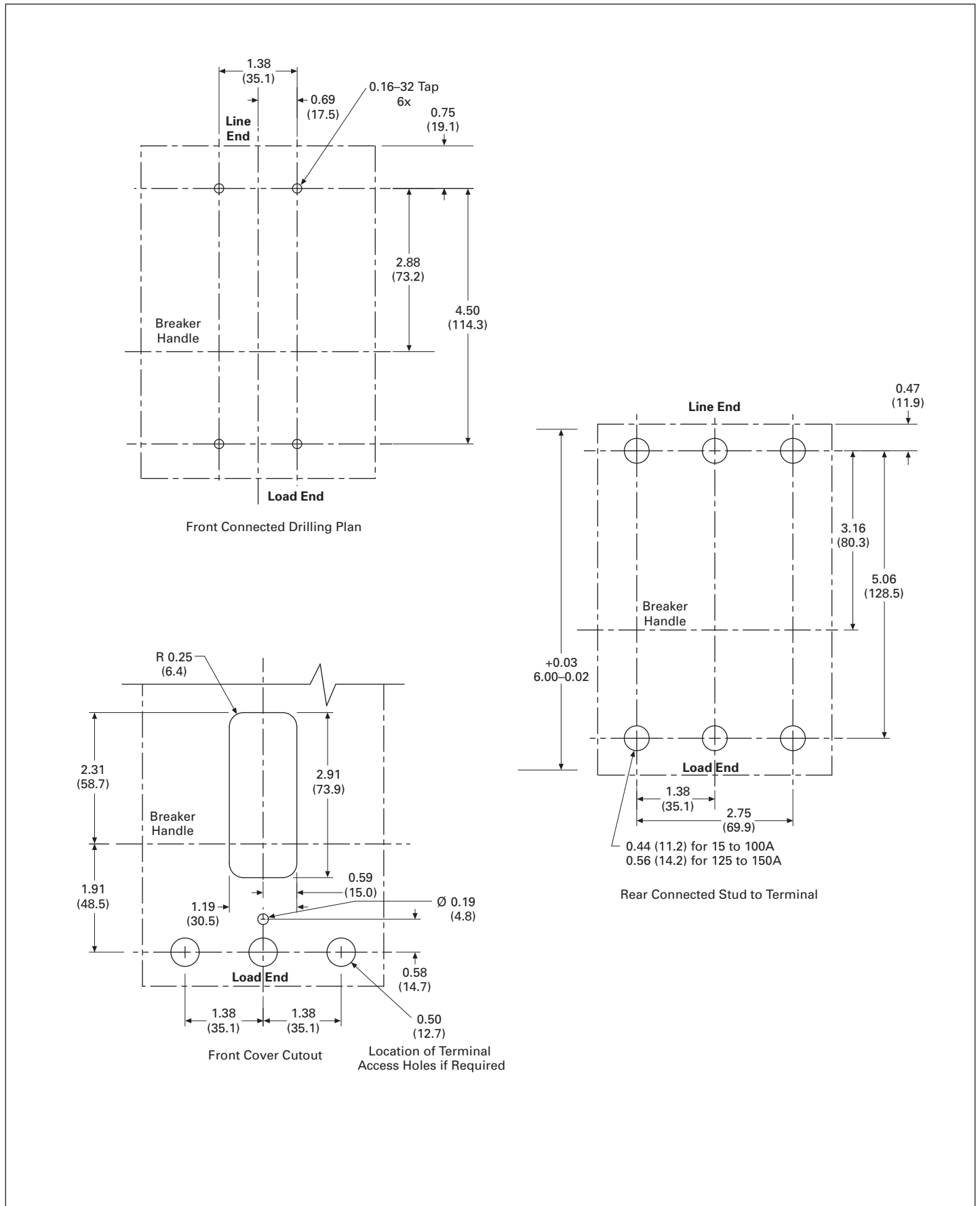


Figure 2. Type FG 15-225A Three-Pole Cutout and Drilling Plan—Dimensions in Inches (mm)

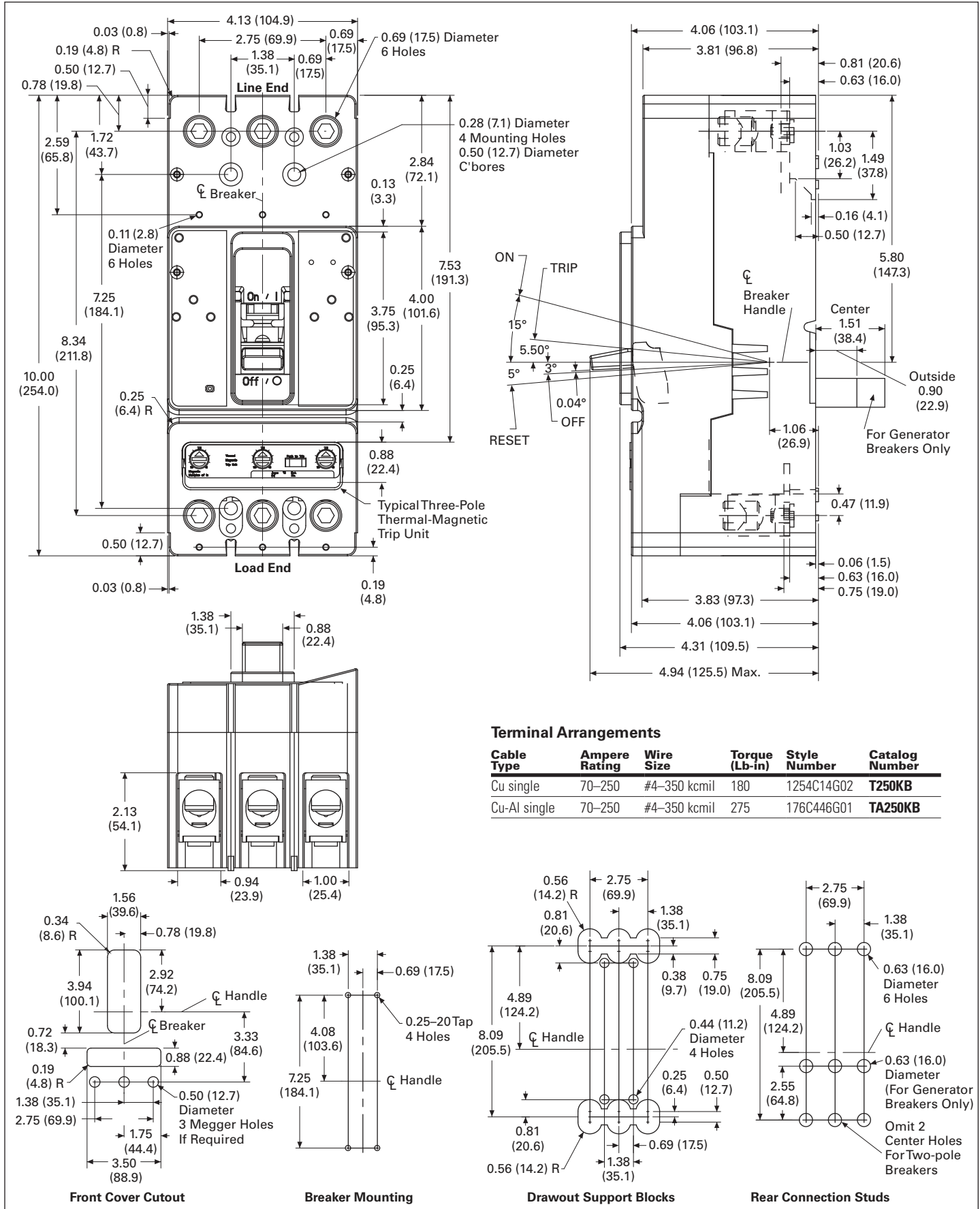


Figure 3. Type JG 175-250A Three-Pole—Dimensions in Inches (mm)

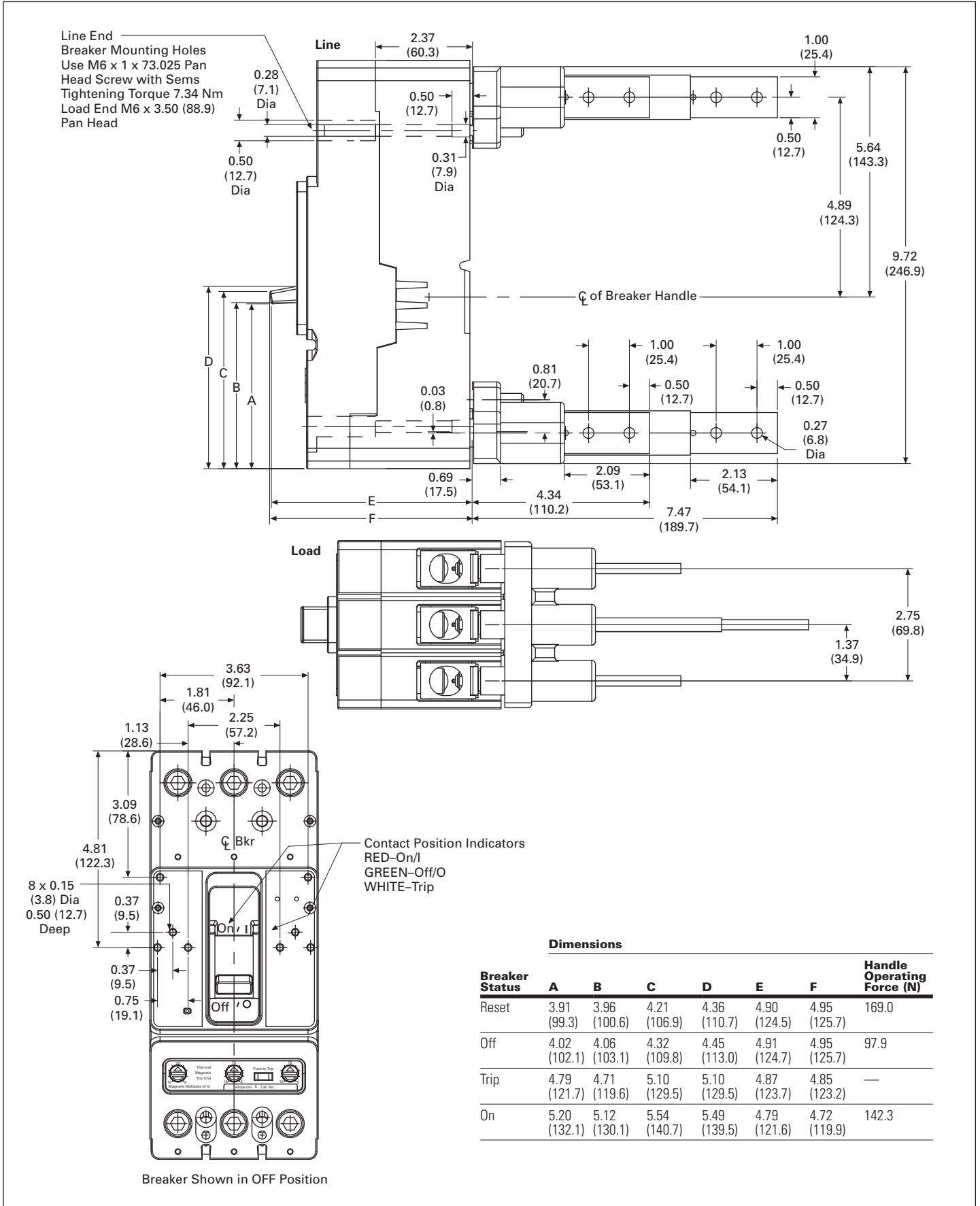


Figure 4. Type JG 175–250A Three-Pole—Dimensions in Inches (mm)

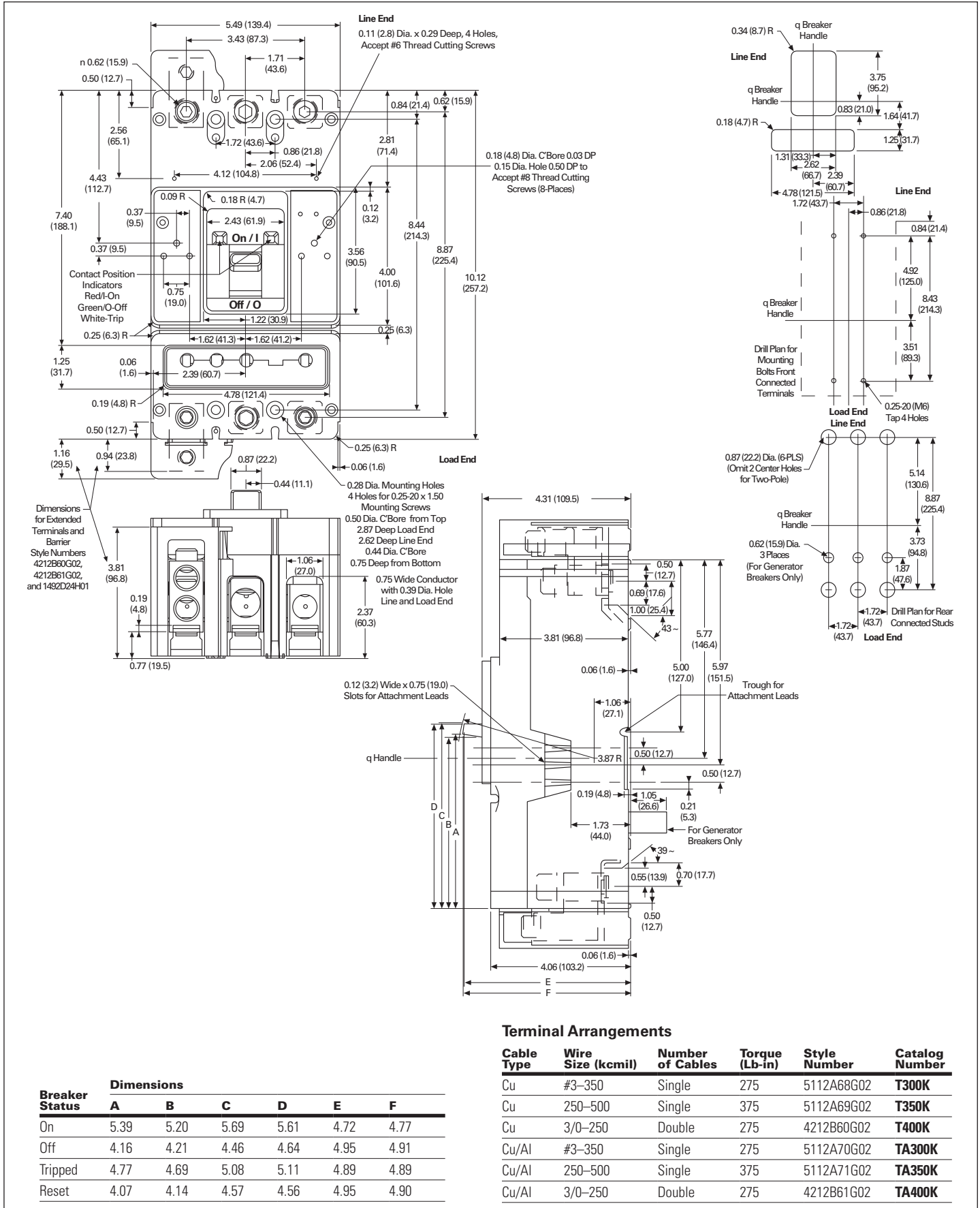


Figure 5. Type KG 300-400A Three-Pole—Dimensions in Inches (mm)

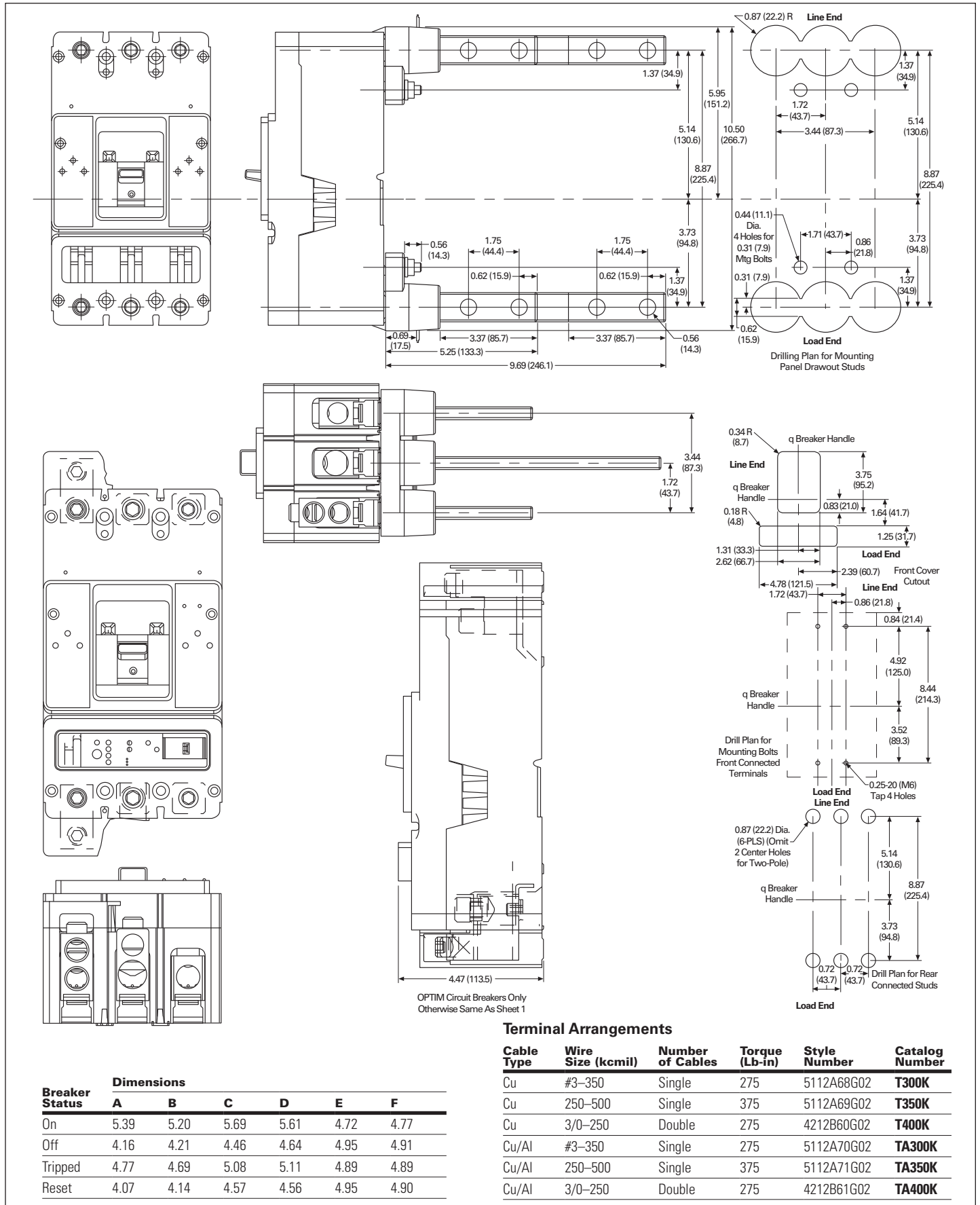


Figure 6. Type KG 300-400A Three Pole—Dimensions in Inches (mm)

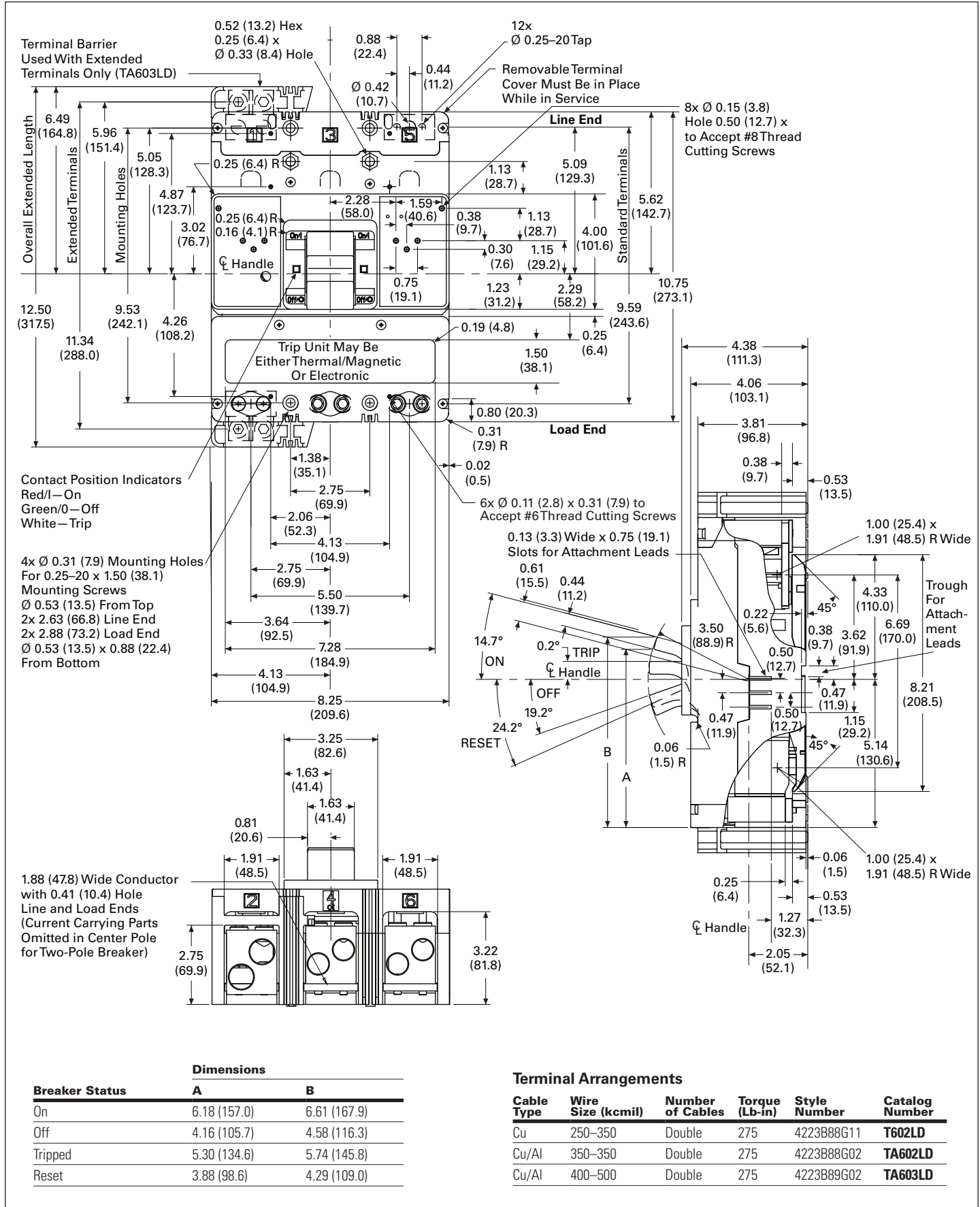


Figure 7. Type LG 450-600A Three-Pole—Dimensions in Inches (mm)

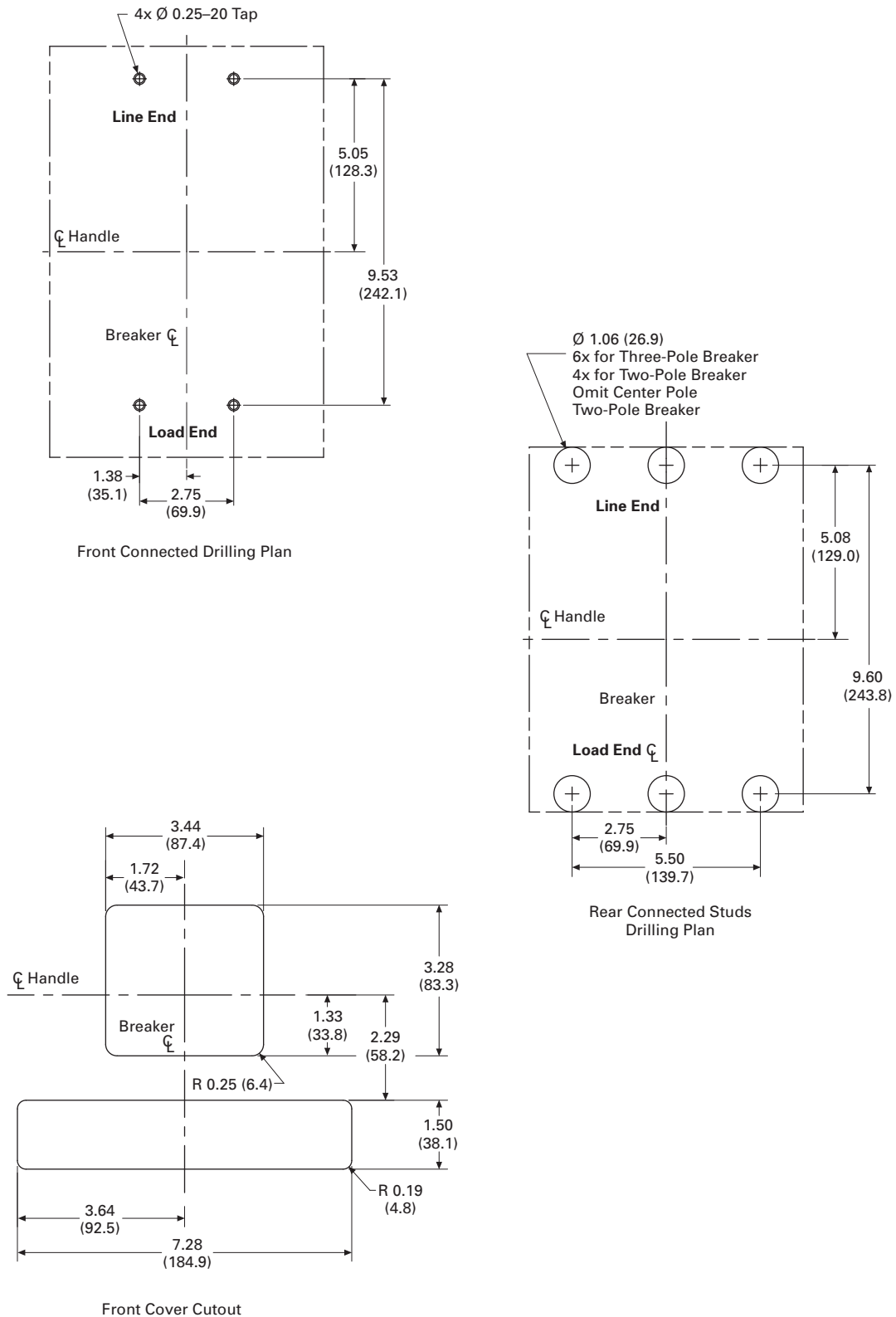


Figure 8. Type LG 450-600A Three-Pole Cutout and Drilling Plan—Dimensions in Inches (mm)

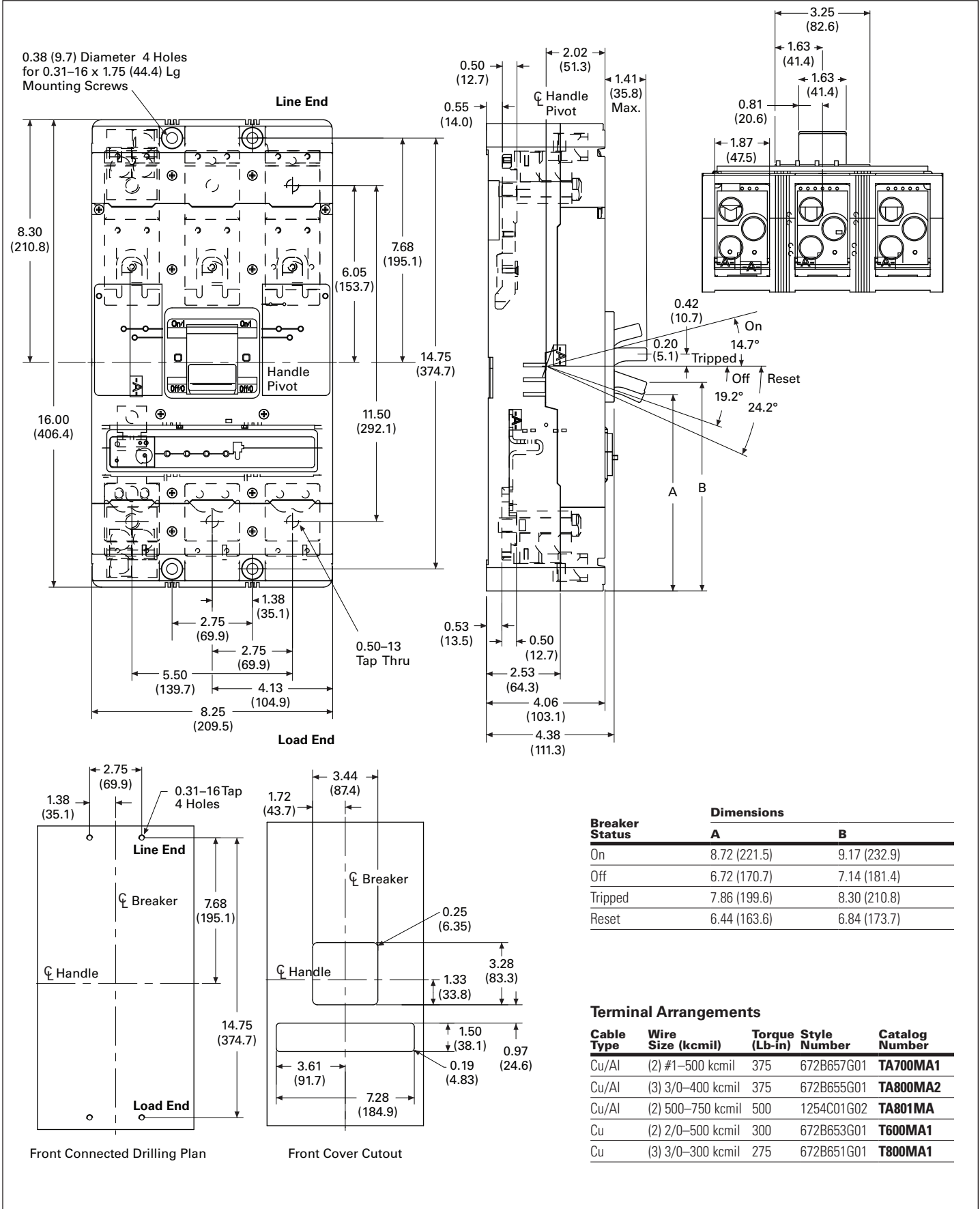


Figure 9. Type MG 700-800A Three-Pole—Dimensions in Inches (mm)

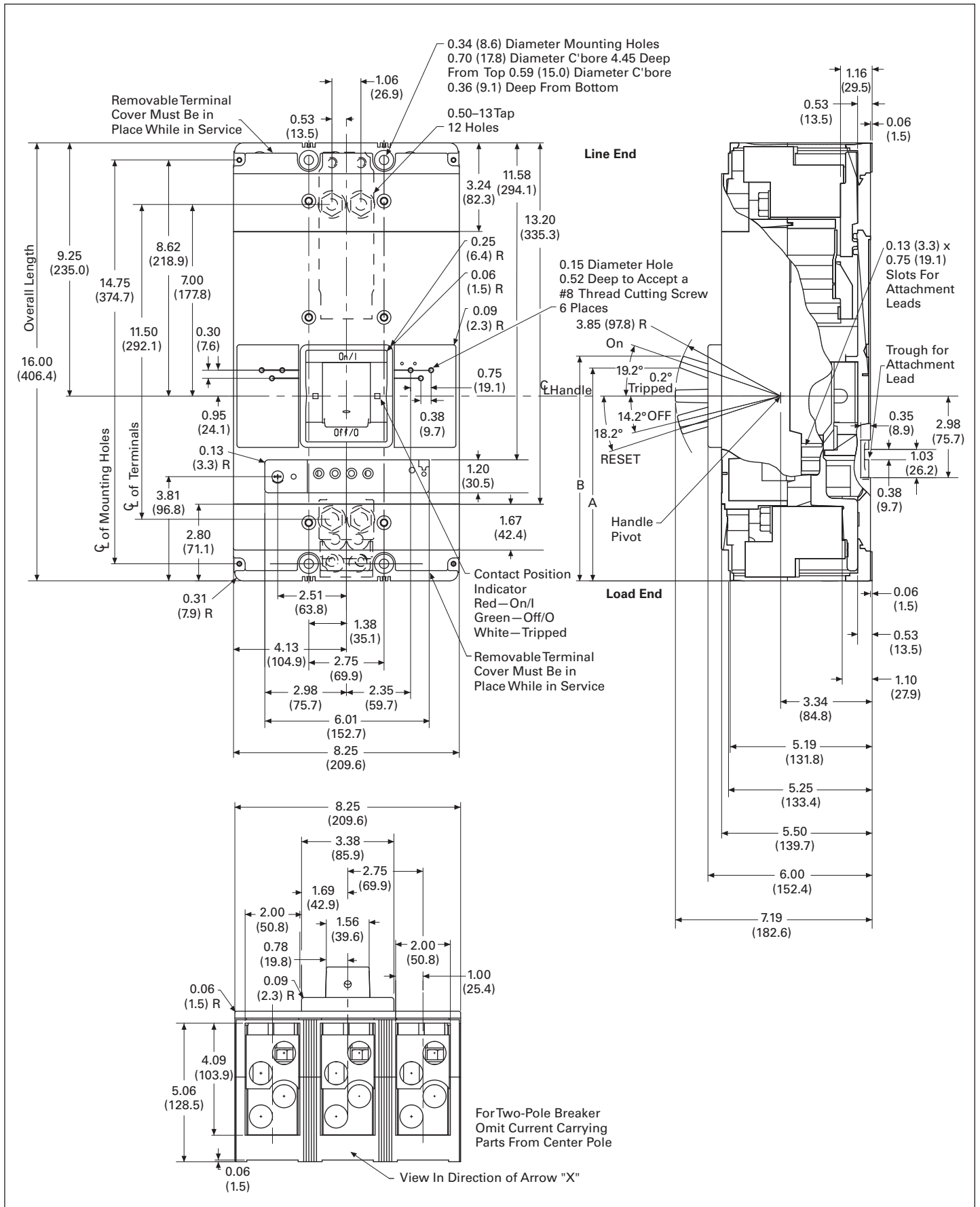


Figure 10. Type NG 900-1200A Three-Pole—Dimensions in Inches (mm)

Eaton Corporation
Electrical Sector
1111 Superior Ave.
Cleveland, OH 44114
United States
877-ETN-CARE (877-386-2273)
Eaton.com

© 2011 Eaton Corporation
All Rights Reserved
Printed in USA
Publication No. TD01214004E / Z11056
April 2011



Eaton is a registered trademark of
Eaton Corporation.

All other trademarks are property of their
respective owners.