



04/99 AWA 123-298

## KV-2 NZM KVA-3 NZM K-2 N KU-2 N

KV-2 NZM

	a
4	125 mm
6	125 mm
64	150 mm
9	150 mm
94	205 mm
11	205 mm
114	275 mm
114 M	300 mm
12	300 mm
24	300 mm

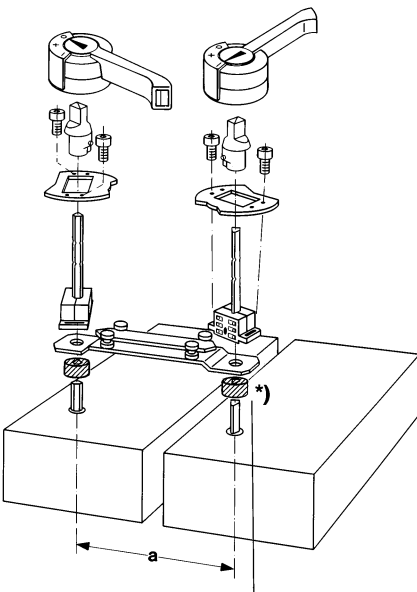
04/99 AWA 123-298

Entfallen bei Schalter ohne Ser.-No.

Do not use for circuit breakers without serial number

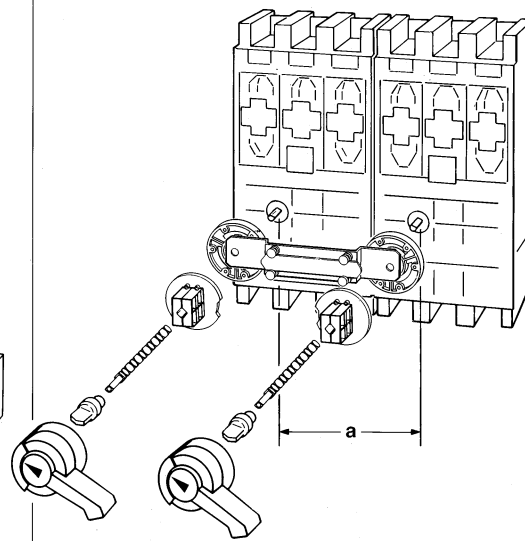
N'existent par sur les appareils sans numéro de série

**KV-2 NZM 4**  
**KV-2 NZM 6, KV-2 NZM 64**  
**KV-2 NZM 9, KV-2 NZM 94**

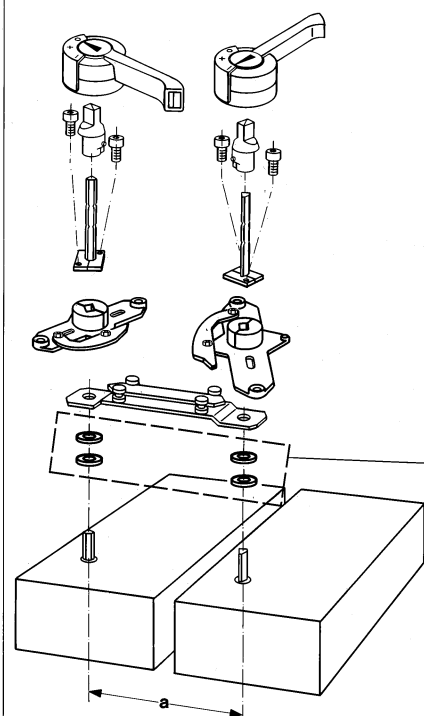


\* nur KV-2 NZM 4  
only KV-2 NZM 4  
seulement KV-2 NZM 4

**KV-2 NZM 11**  
**KV-2 NZM 114**  
**KV-2 NZM 114 M**



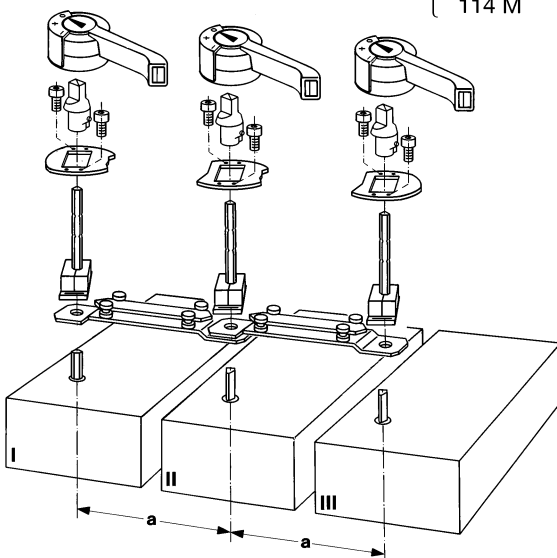
**KV-2 NZM 12, 24**



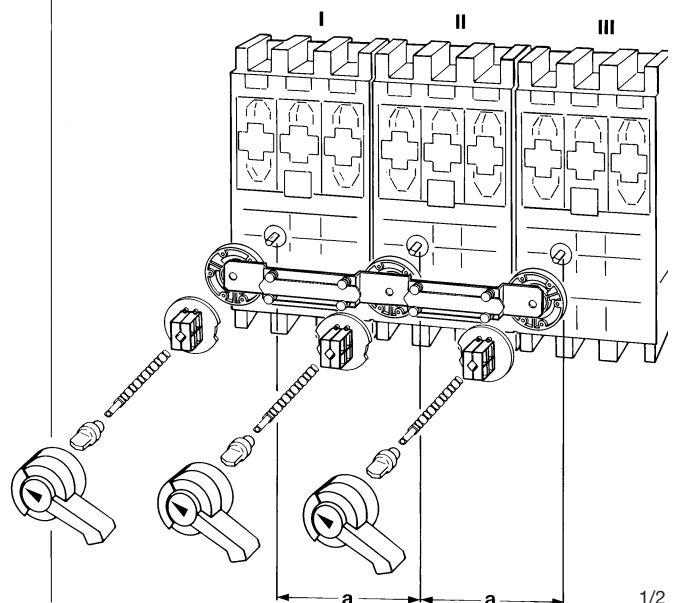
**KVA-3 NZM 9 (MS 9)**  
**KVA-3 NZM 94 (MS 9)**

KVA-3 NZM

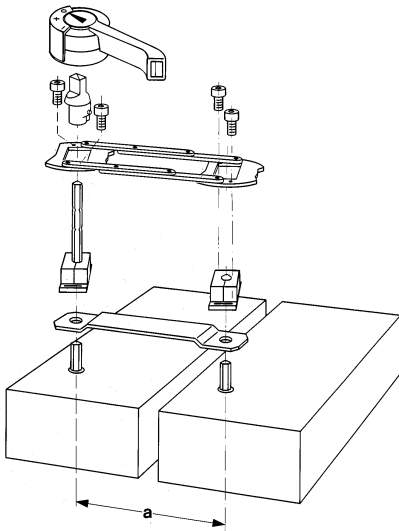
	a
9 (MS 9)	150 mm
94 (MS 9)	205 mm
11	205 mm
114	275 mm
114 M	300 mm



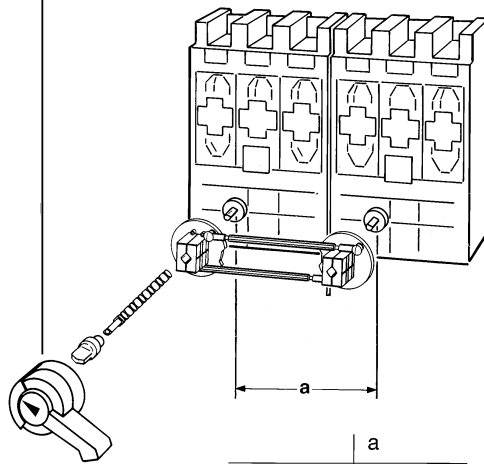
**KVA-3 NZM 11**  
**KVA-3 NZM 114**  
**KVA-3 NZM 114 M**



K-2 N 6, K-2 N 64  
K-2 N 9, K-2 N 94



K-2 N 11  
K-2 N 114



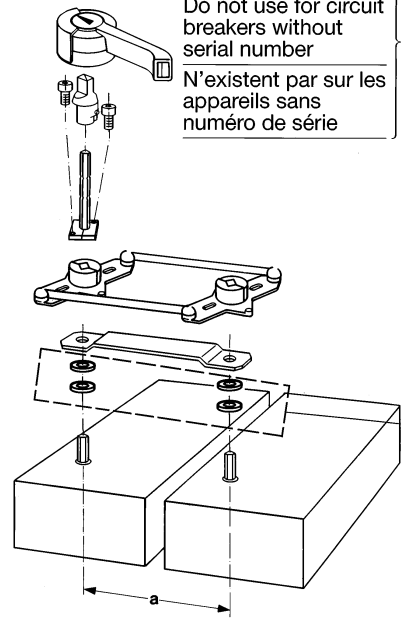
K-2 N	a
6	125 mm
64	150 mm
9	150 mm
94	205 mm
11	205 mm
114	275 mm
12	300 mm

K-2 N 12

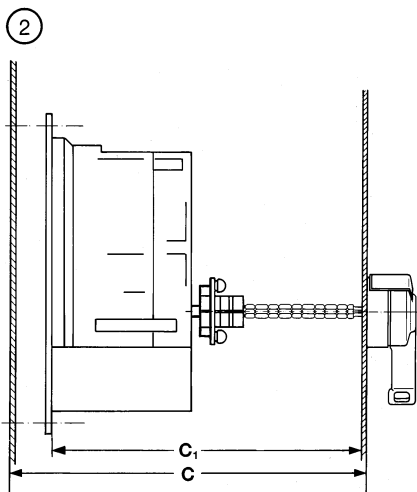
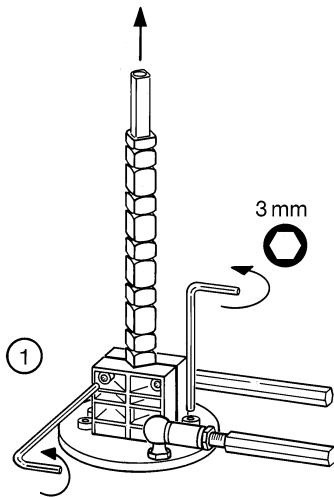
Entfallen bei Schalter ohne Ser.-No.

Do not use for circuit breakers without serial number

N'existent par sur les appareils sans numéro de série

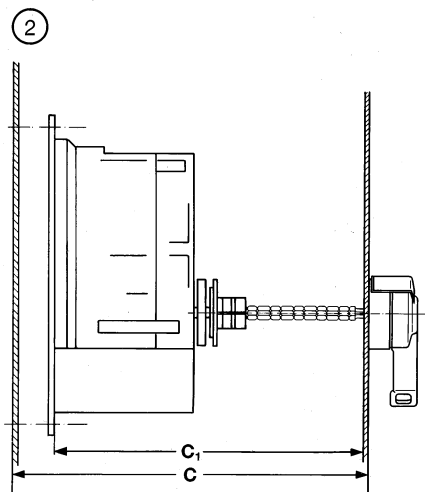
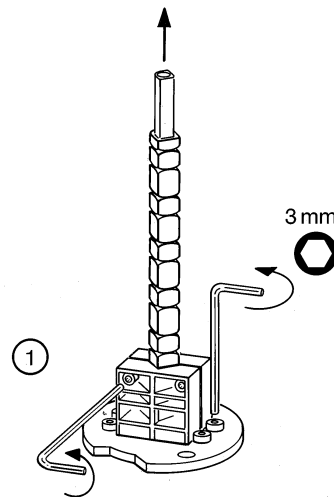


K-2 N...



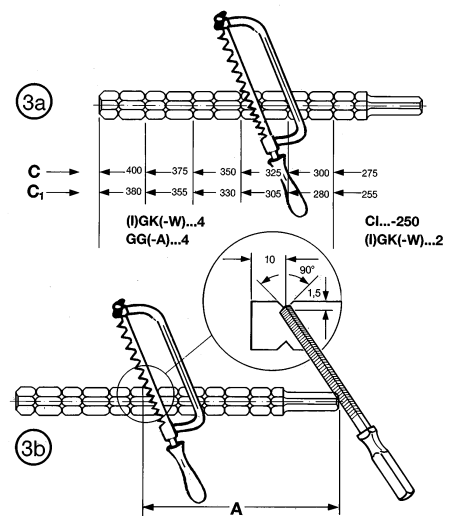
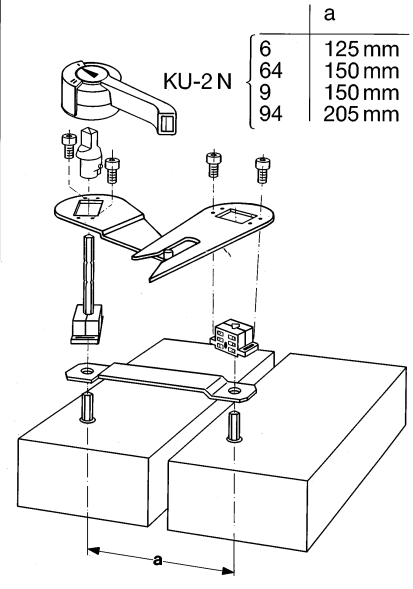
C : Klöckner-Moeller Gehäusetiefe  
C<sub>1</sub> : Geräteinbautiefe  
C : Klöckner-Moeller enclosure depth  
C<sub>1</sub> : Component mounting depth  
C : Profondeur de coffret Klöckner-Moeller  
C<sub>1</sub> : Profondeur de montage

KV...



C : Klöckner-Moeller Gehäusetiefe  
C<sub>1</sub> : Geräteinbautiefe  
C : Klöckner-Moeller enclosure depth  
C<sub>1</sub> : Component mounting depth  
C : Profondeur de coffret Klöckner-Moeller  
C<sub>1</sub> : Profondeur de montage

KU-2 N 6, KU-2 N 64  
KU-2 N 9, KU-2 N 94



A: Achslänge = C<sub>1</sub> - 208,5 mm  
A: Length of shaft = C<sub>1</sub> - 208,5 mm  
A: Longueur de l'axe = C<sub>1</sub> - 208,5 mm