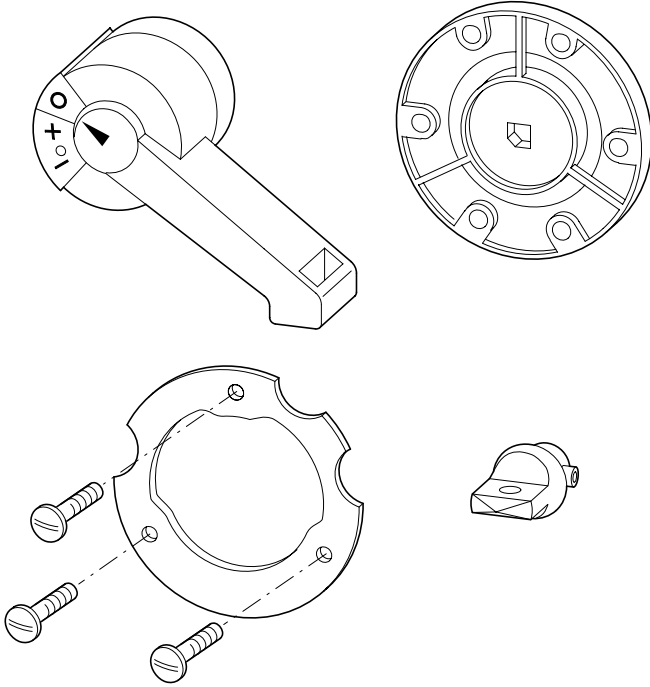


Montageanweisung
Installation Instructions
Notice d'installation
Istruzioni per il montaggio

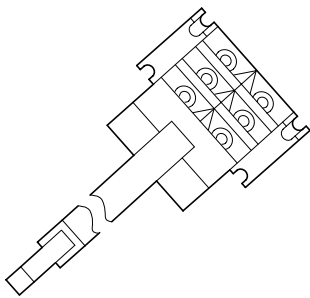
Instrucciones de montaje
Инструкция по монтажу
安装说明

H14-SW, H14-F-SW, RH14, RH14-F, A400-NZM14, A600-NZM14 ZS...-NZM10, H10UZ, H12UZ

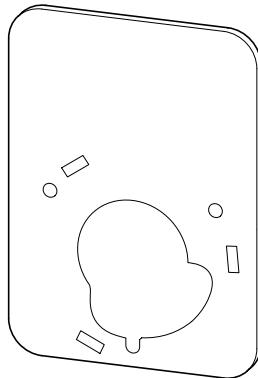
H14-SW, H14-F-SW
RH14, RH14-F



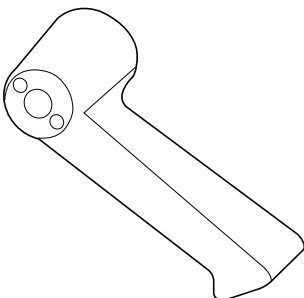
A400-NZM14
A600-NZM14



ZS...-NZM10



H10UZ, H12UZ



Lebensgefahr durch elektrischen Strom!
Nur Elektrofachkräfte und elektrotechnisch unterwiesene Personen dürfen die im Folgenden beschriebenen Arbeiten ausführen.

Electric current! Danger to life!

Only skilled or instructed persons may carry out the following operations.

Tension électrique dangereuse !

Seules les personnes qualifiées et averties doivent exécuter les travaux ci-après.

Tensione elettrica: Pericolo di morte!

Solo persone abilitate e qualificate possono eseguire le operazioni di seguito riportate.

¡Corriente eléctrica! ¡Peligro de muerte!

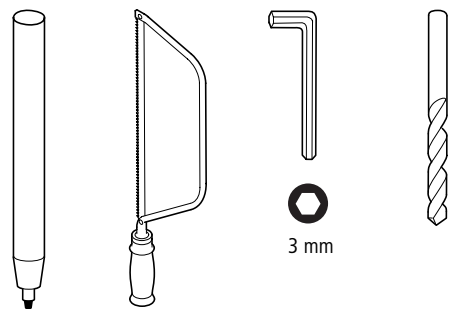
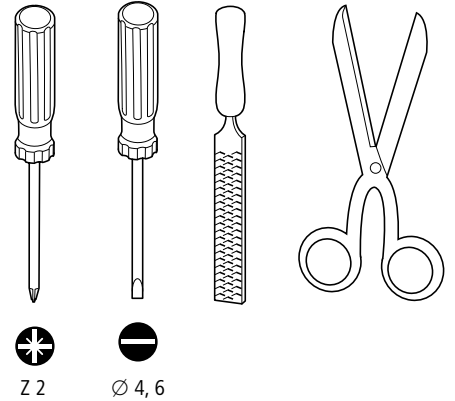
El trabajo a continuación descrito debe ser realizado por personas cualificadas y advertidas.

Электрический ток! Опасно для жизни!

Только специалисты или проинструктированные лица могут выполнять следующие операции.

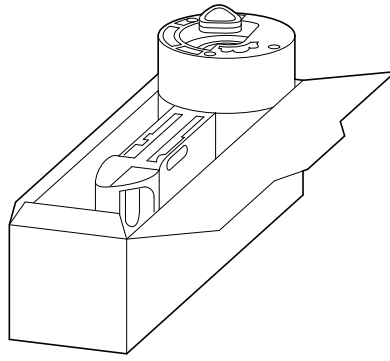
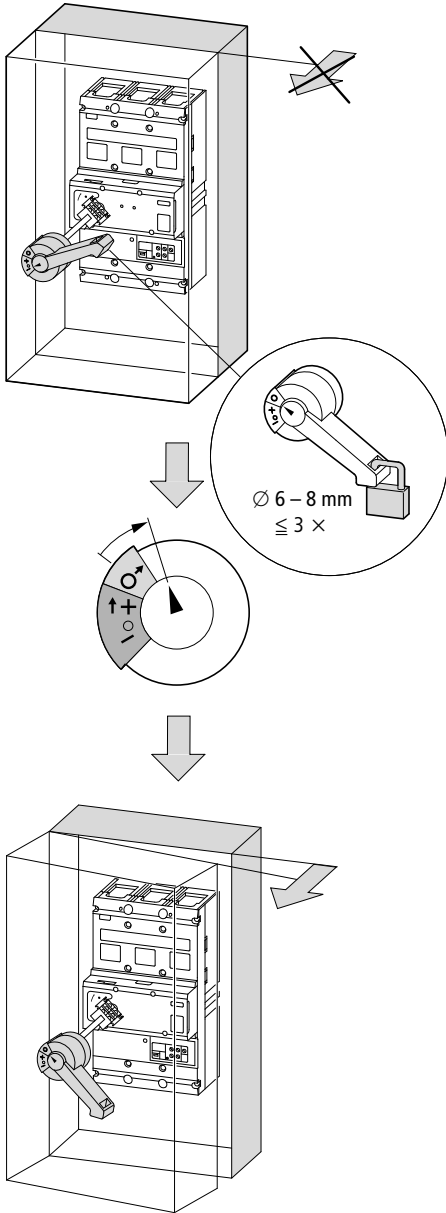
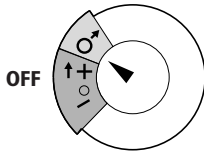
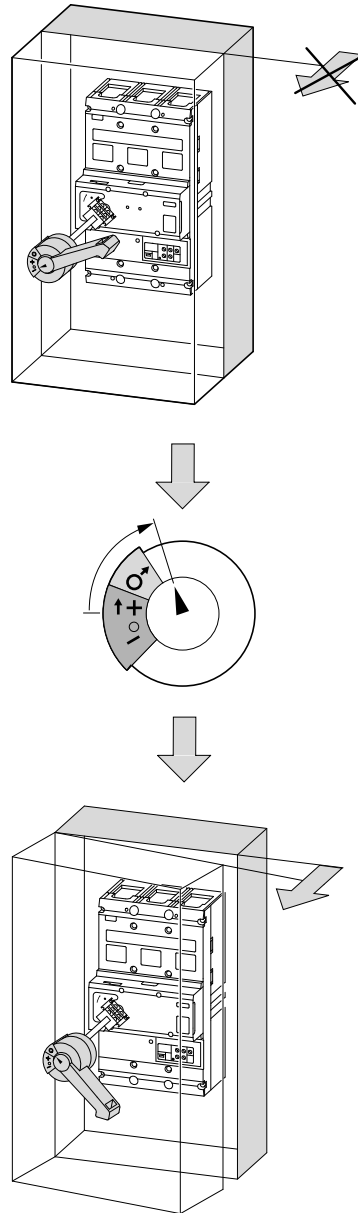
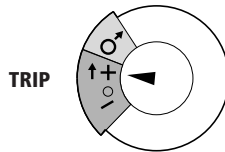
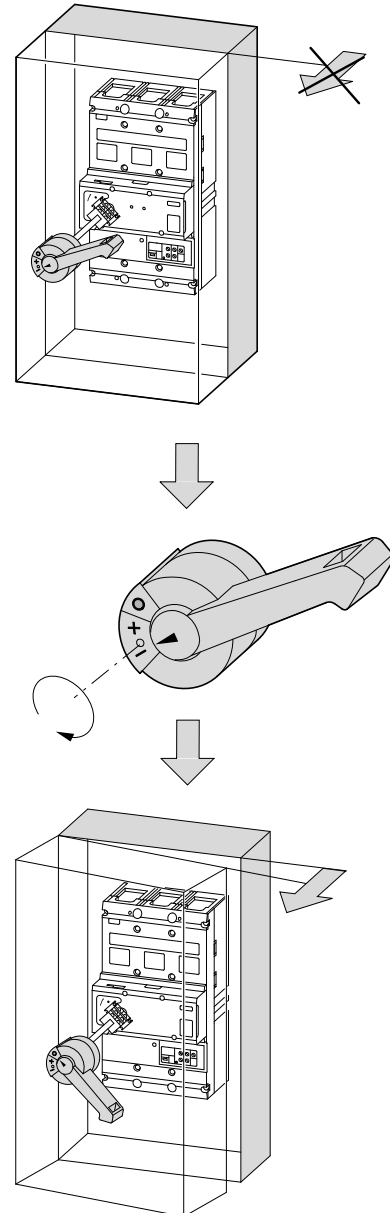
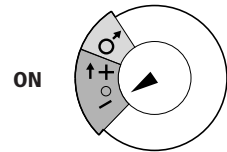
触电危险!

只允许专业人员 and 受过专业训练的人员进行下列工作。



1

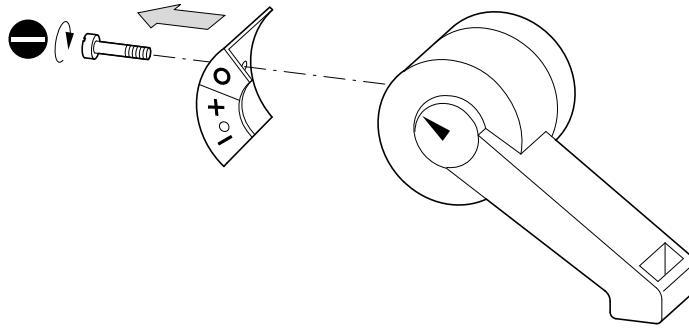
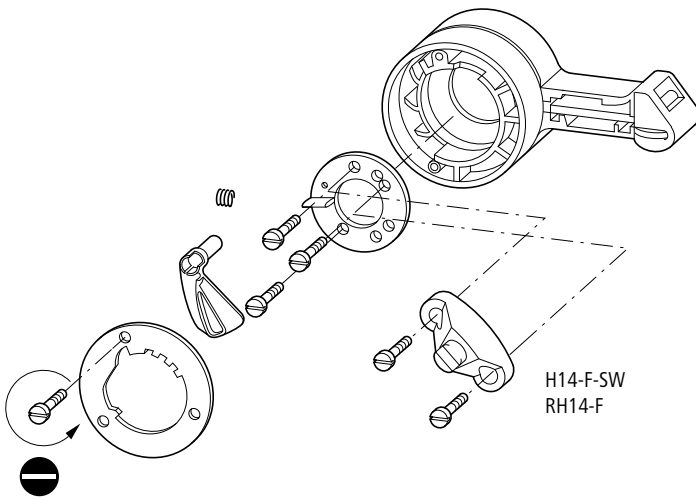
Lieferzustand
 (Abschließposition in OFF-Stellung)
 As supplied
 (locking position in OFF)
 Etat à la livraison
 (position de verouillage en OFF)
 Stato di fornitura
 (lucchettabile nella posizione OFF)
 Estado en suministro
 (posición enclavable en posición OFF)
 Состояние поставки
 (запирающая позиция в положении OFF)
 供货时的状况
 关闭时的锁闭位置

**2****3****4**

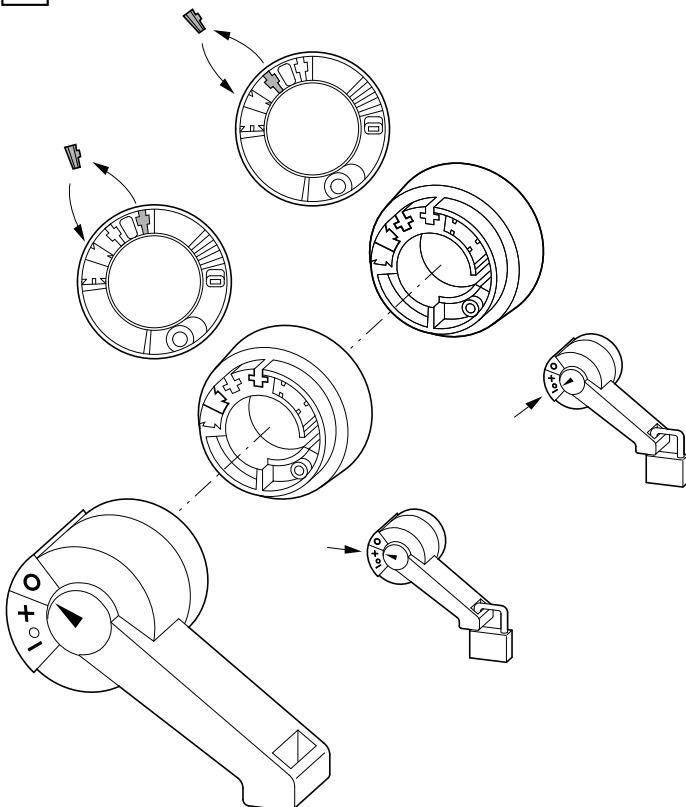
10/00 AWA123-1460

1

Veränderung der Abschließposition
 Modifying the lockable position
 Changement de la position de verouillage
 Modifica della posizione di lucchettabile
 Cambio de la posición de enclavamiento
 Изменение запирающей позиции
 改变锁闭位置

**2**

10/00 AWA123-1460

3**Warnung!**

Es ist nicht zulässig, die Abschließposition in ON-Stellung für den Not-Aus RH14, RH14-F zu aktivieren!

Warning!

It is not permitted to activate the locking position in ON position for the emergency-stop RH14, RH14-F!

Attention!

Il est interdit d'activer la position de verouillage en ON pour l'arrêt d'urgence!

Attenzione!

Non è permesso lucchettare nella posizione ON la maniglia a comando rinviato RH14, RH14-F per arresto di emergenza!

¡Acvertencia!

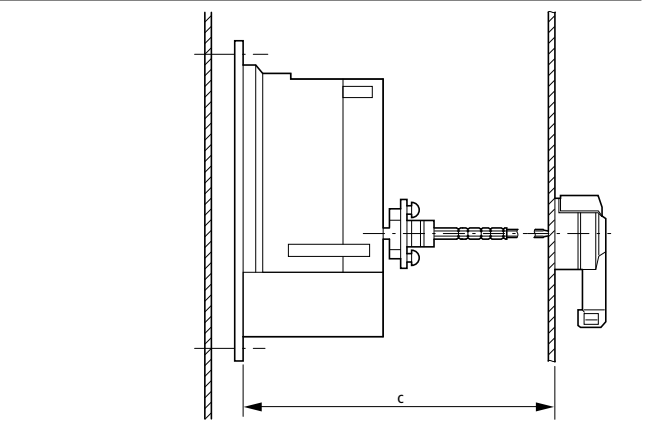
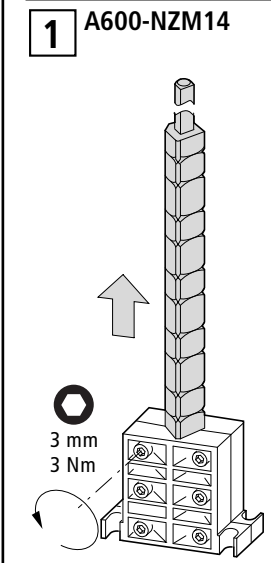
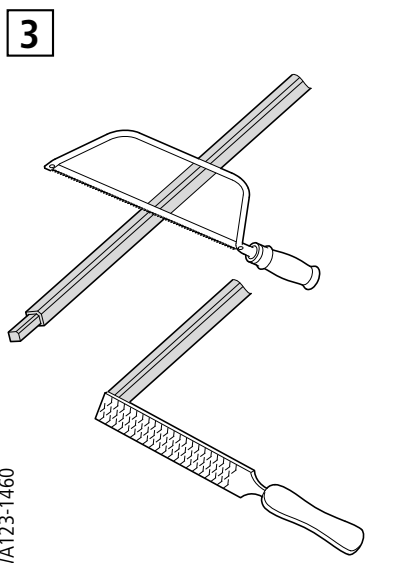
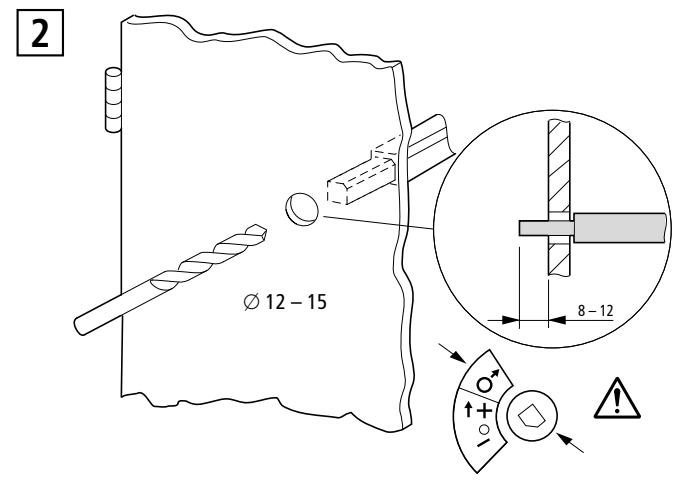
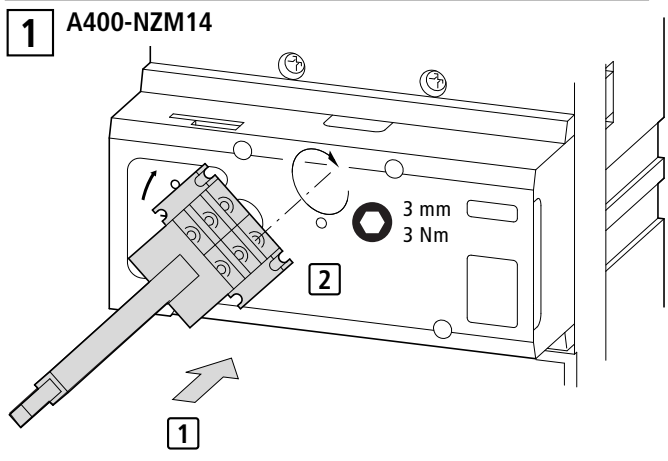
No está permitido activar la posición enclavable en la posición ON en el pulsador de paro de emergencia RH14, RH14-F!

Иредупреждение!

Не допускается активировать запирающую позицию в положении ON для аварийного отключения RH14, RH14-F

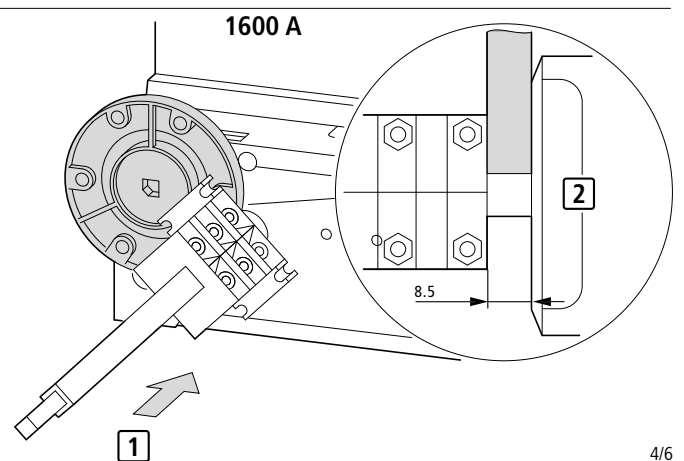
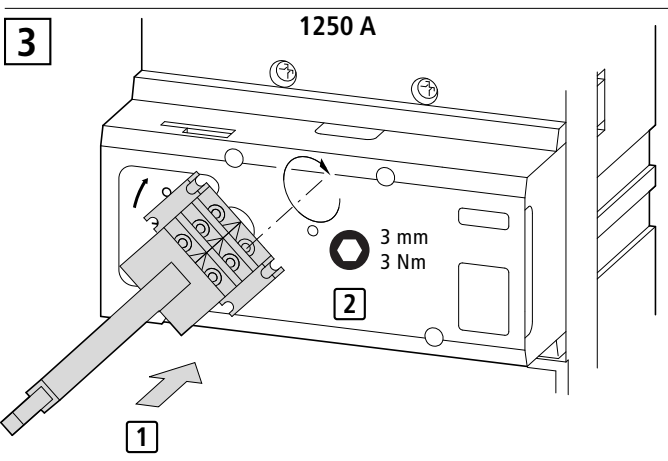
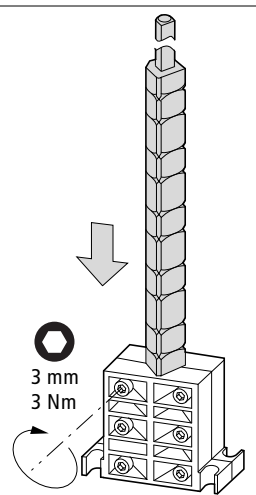
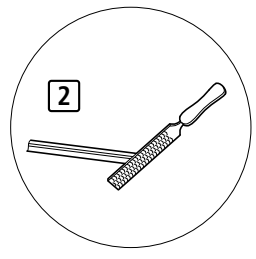
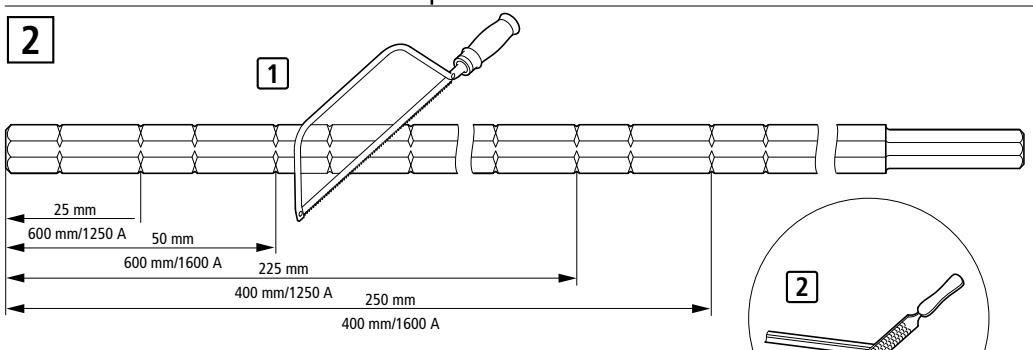
警告

当锁闭位置在开-状况时不能用于紧急关闭 RH14, RH14-F

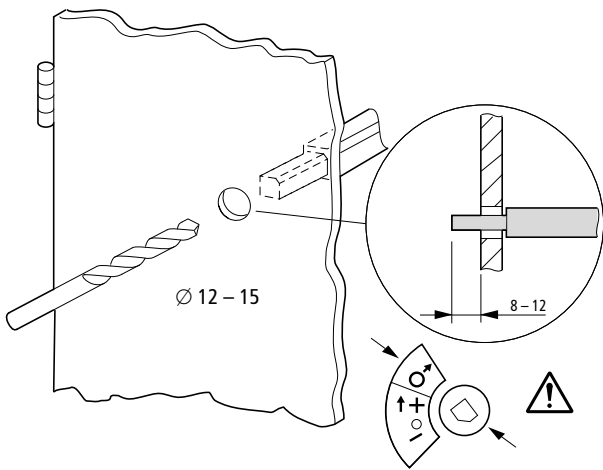


	c = 400 mm	c = 600 mm
1250 A	225 mm	25 mm
1600 A	250 mm	50 mm

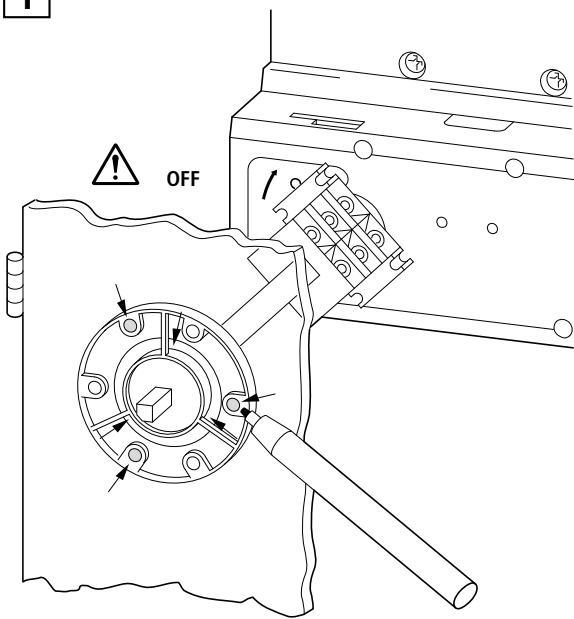
10/00 AWA123-1460



4

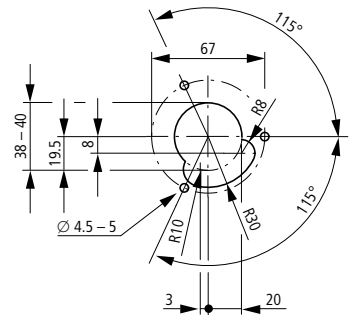
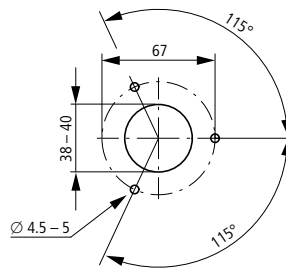


1



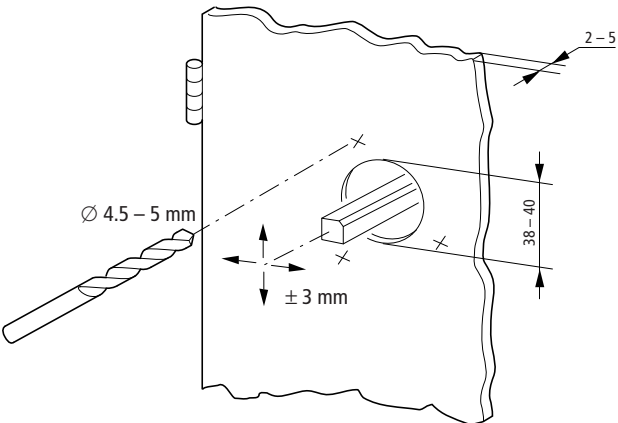
H14SW
RH14

H14-F-SW
RH14-F

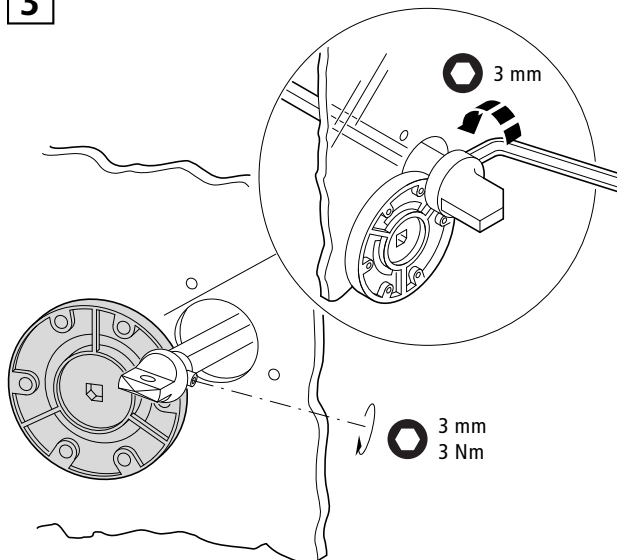


10/00 AWA123-1460

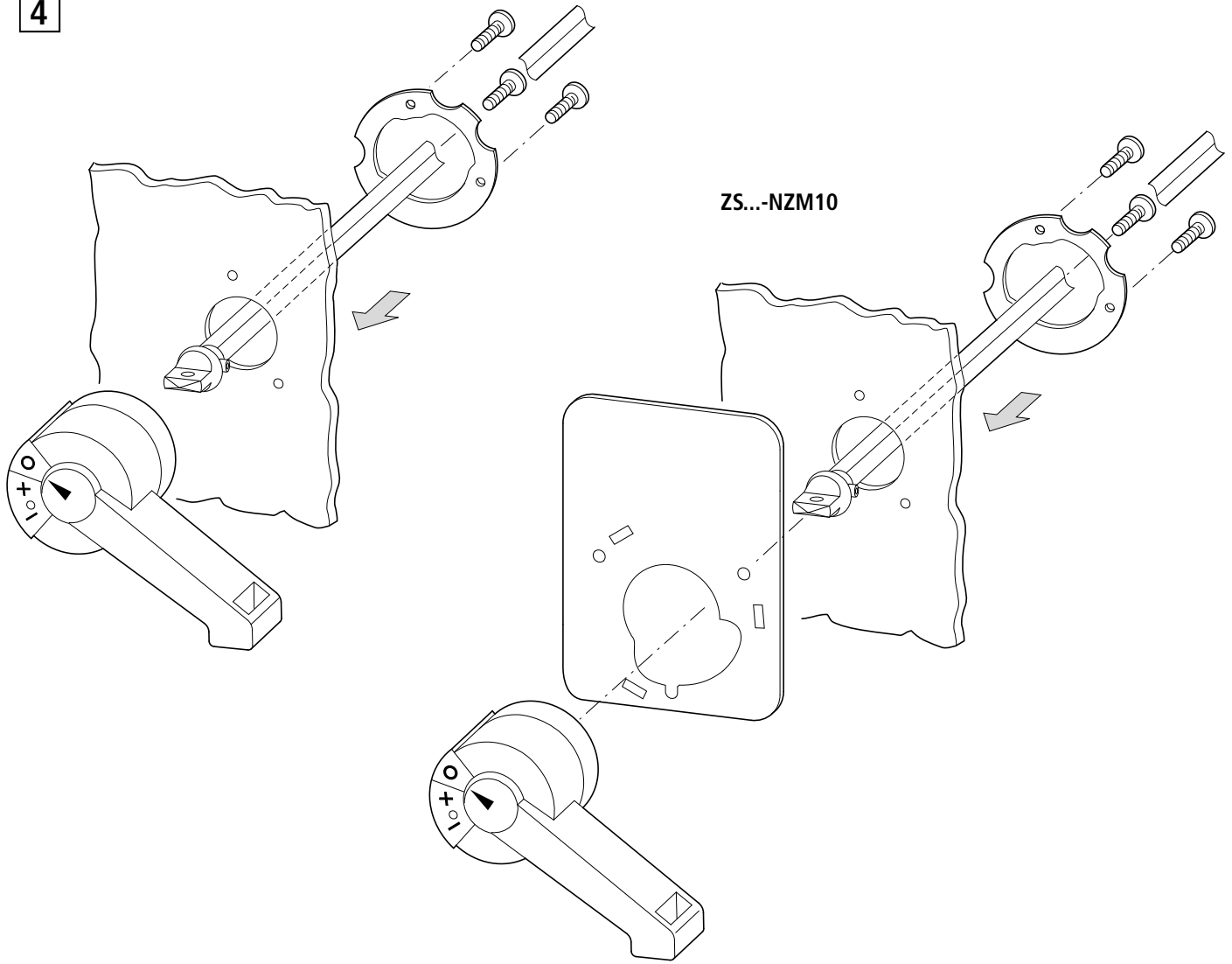
2



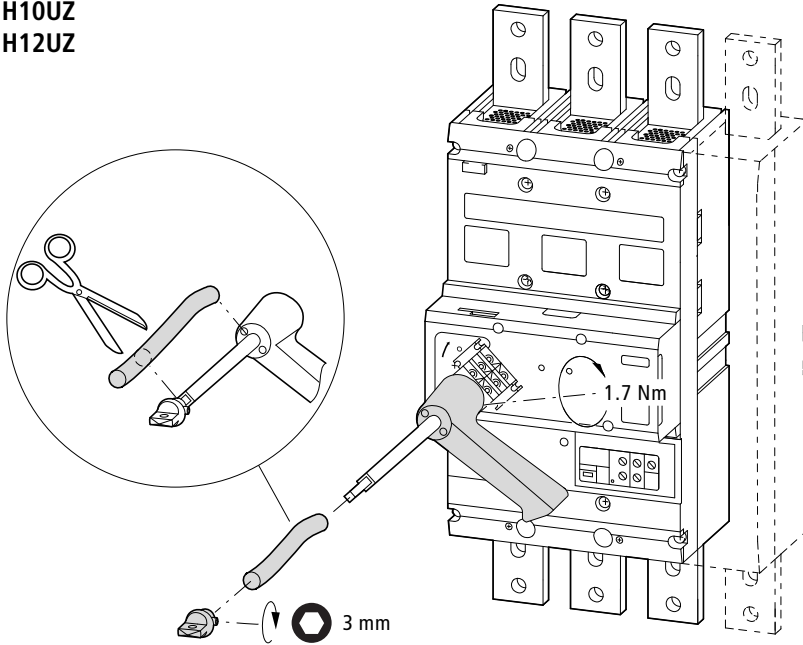
3



4



H10UZ
H12UZ



10/00 AWA123-1460