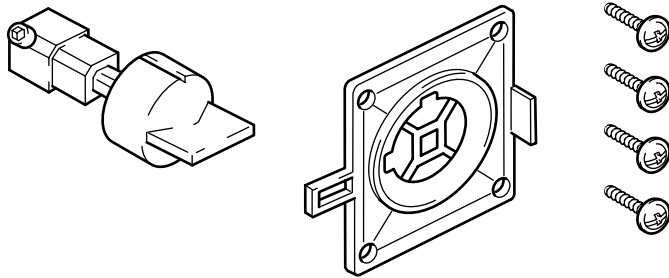
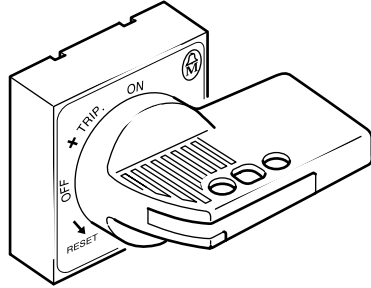
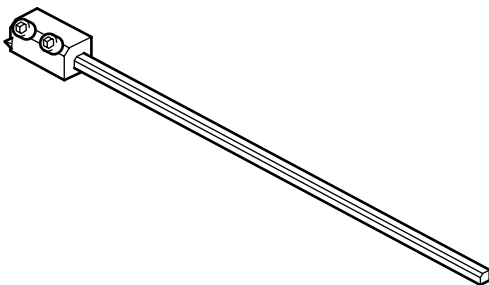



H-NZM7-NA
RH-NZM7-NA
A400-NZM7
A600-NZM7

H-NZM7-NA
RH-NZM7-NA



A400-NZM7
A600-NZM7



 **Lebensgefahr durch elektrischen Strom!**
Nur Elektrofachkräfte und elektrotechnisch unterwiesene Personen dürfen die im Folgenden beschriebenen Arbeiten ausführen.

Electric current! Danger to life!
Only skilled or instructed persons may carry out the following operations.

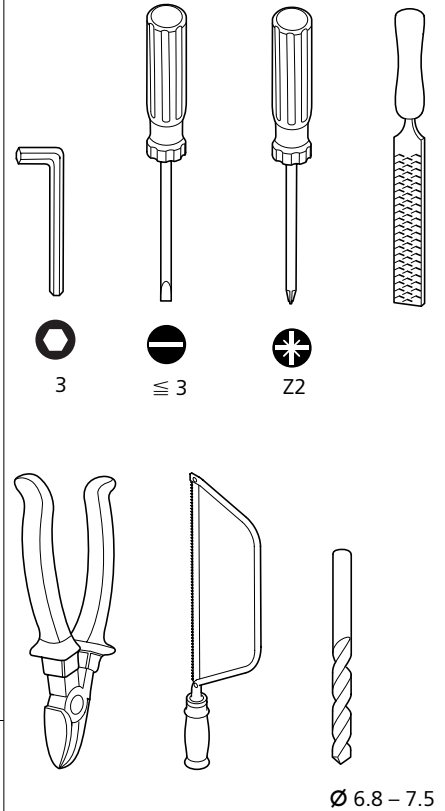
Tension électrique dangereuse !
Seules les personnes qualifiées et averties doivent exécuter les travaux ci-après.

Tensione elettrica: Pericolo di morte!
Solo persone abilitate e qualificate possono eseguire le operazioni di seguito riportate.

¡Corriente eléctrica! ¡Peligro de muerte!
El trabajo a continuación descrito debe ser realizado por personas cualificadas y advertidas.

Электрический ток! Опасно для жизни!
Только специалисты или проинструктированные лица могут выполнять следующие операции.

触电危险!
只允许专业人员和受过专业训练的人员进行下列工作。



1 H-NZM7-NA, RH-NZM7-NA

Lieferzustand

Abschließbar in OFF-Stellung

State of delivery

Lockable in OFF position

Etat à la livraison

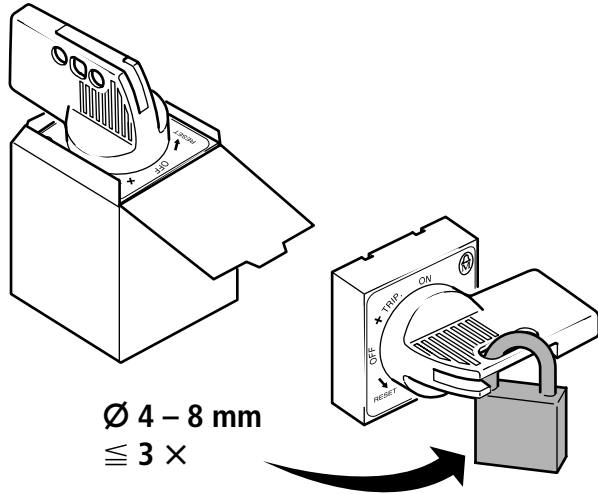
Possibilité de cadenasage en position OUVERT

Stato di fornitura

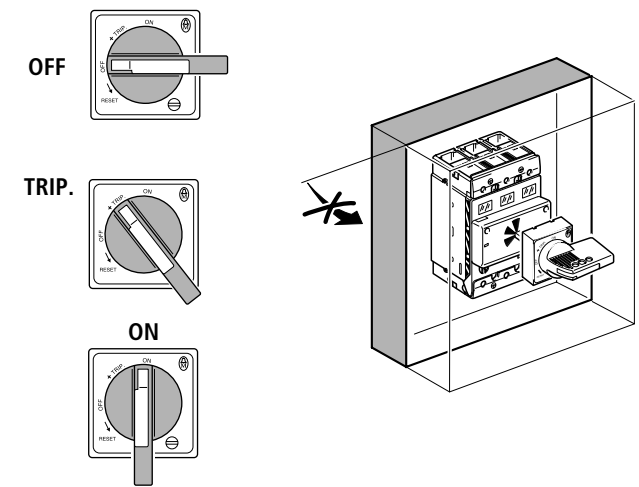
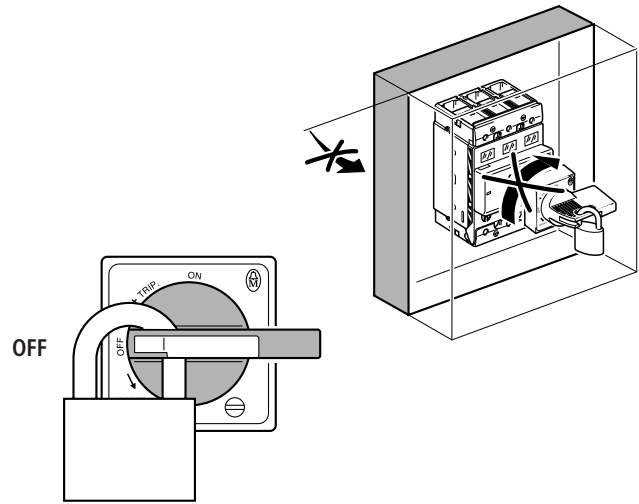
Lucchettabile nella posizione OFF

Estado de entrega

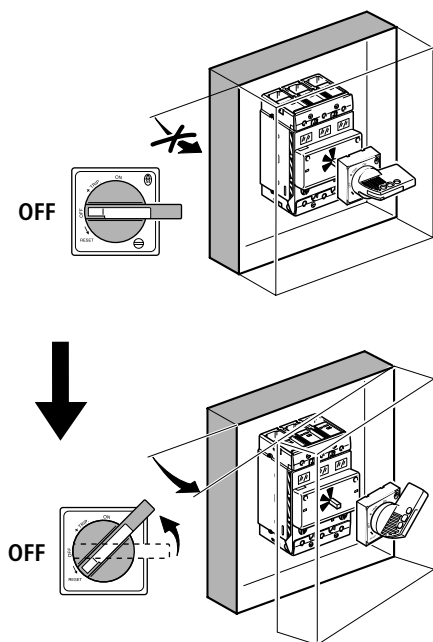
Enclavable en posición OFF



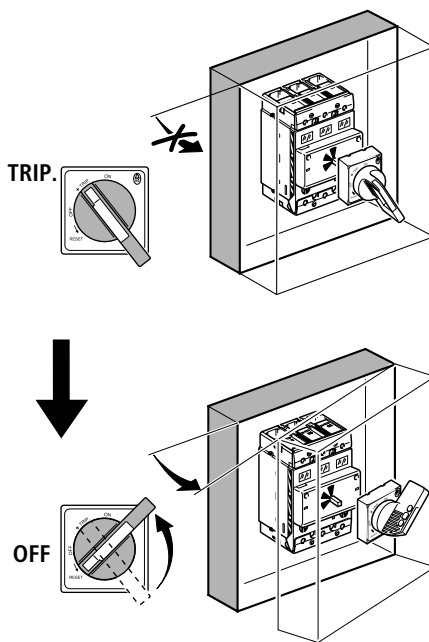
2



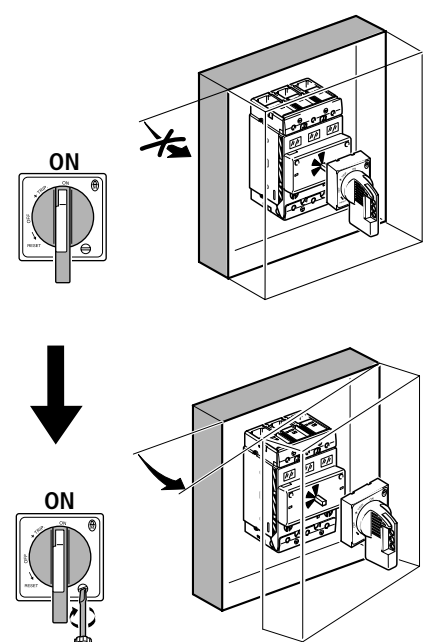
1a



1b

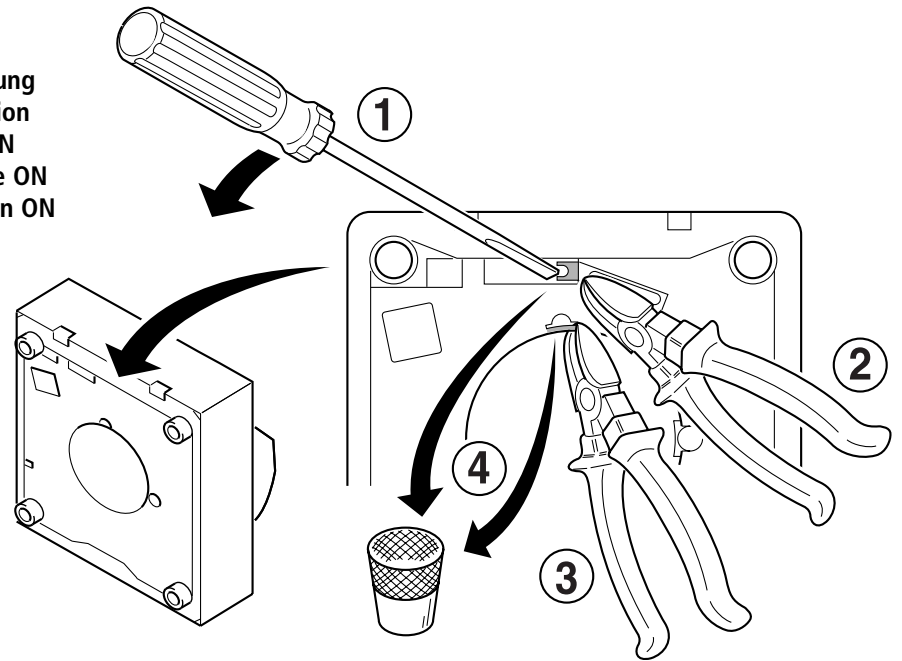


1c



1 H-NZM7-NA

Aktivierung der Abschließposition in ON-Stellung
Activation of the locking position in ON position
Activation de la position de verrouillage en ON
Attivazione della lucchettatura nella posizione ON
Activación de la posición enclavable en posición ON



Warnung!

Es ist nicht zulässig, die Abschließposition in ON-Stellung für den Not-Aus RH-NZM7-NA zu aktivieren!



Warning!

It is not permitted to activate the locking position in ON position for the emergency-stop RH-NZM7-NA!



Attention !

Il est interdit d'activer la position de verrouillage en ON pour l'arrêt d'urgence RH-NZM7-NA !



Attenzione!

Non è permesso lucchettare nella posizione ON la maniglia a comando rinviato RH-NZM7-NA per arresto di emergenza!

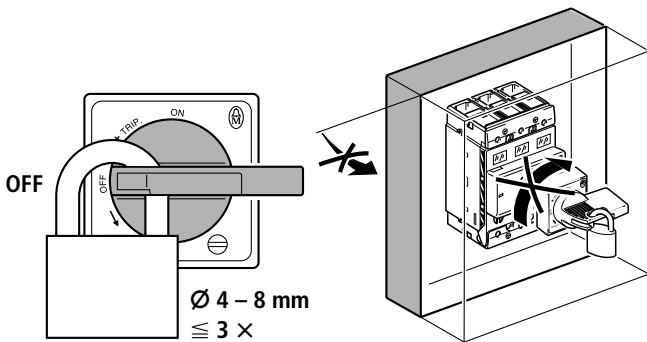


Advertencia!

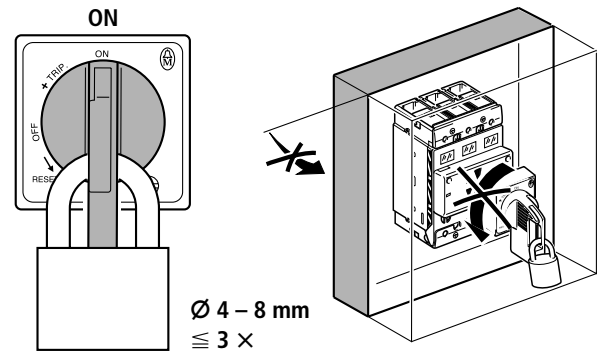
No está permitido activar la posición enclavable en la posición ON en el pulsador de paro de emergencia RH-NZM7-NA!

11/00 AWA1230-1906

2

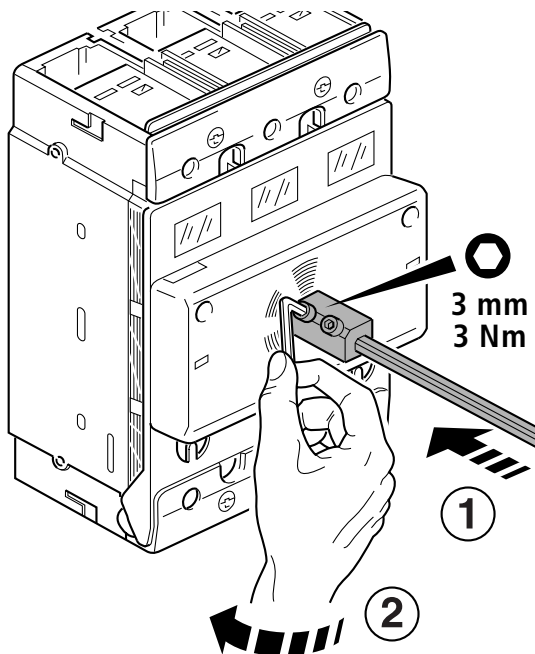


3 H-NZM7-NA

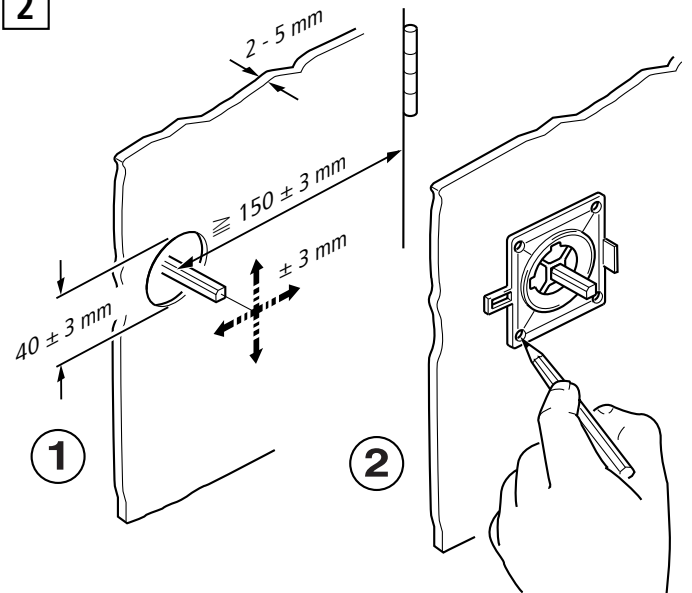


1

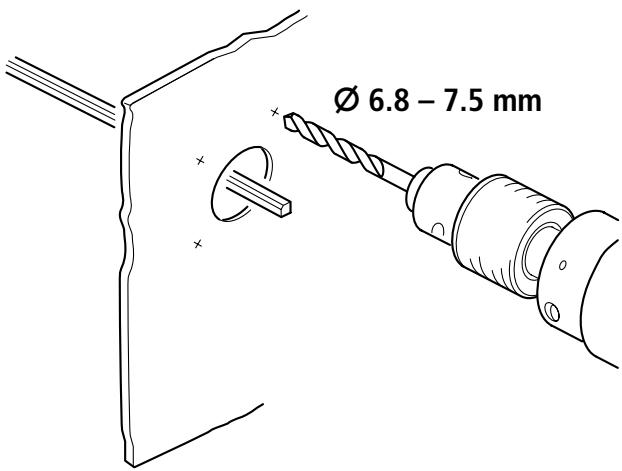
Montage
Mounting
Montage
Montaggio
Montaje



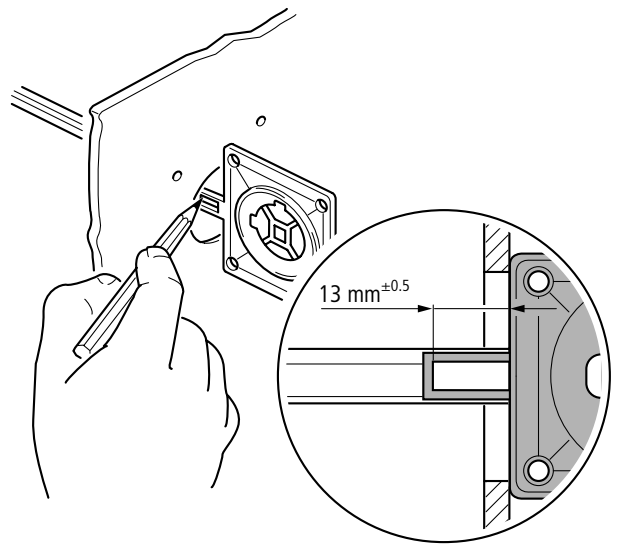
2



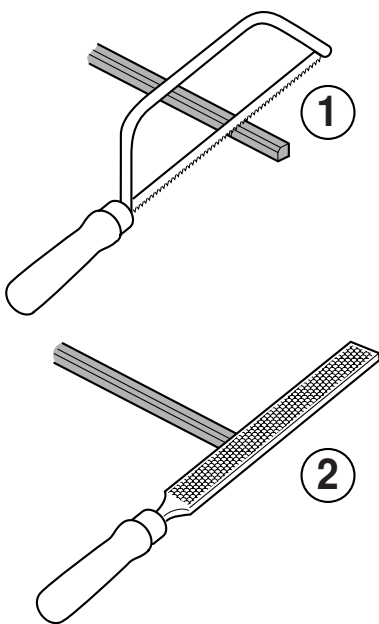
3



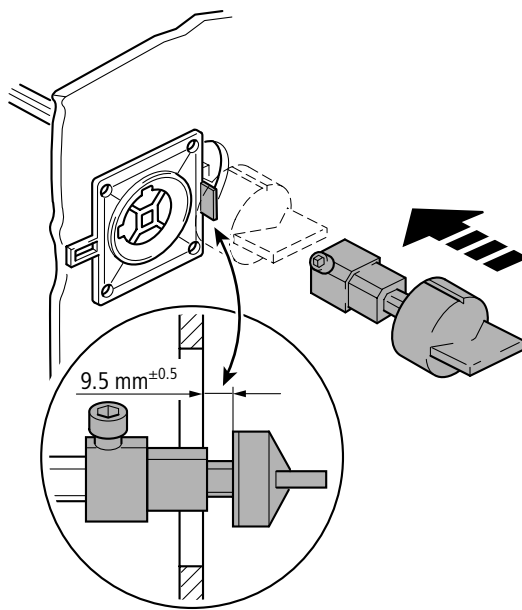
4



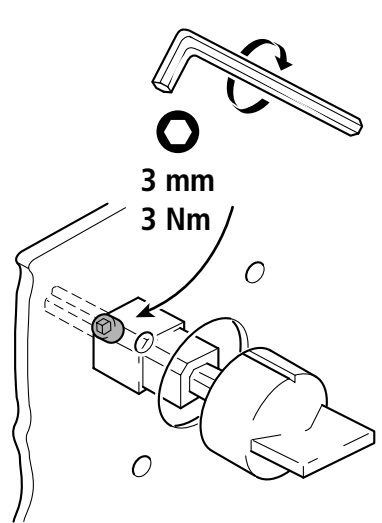
5



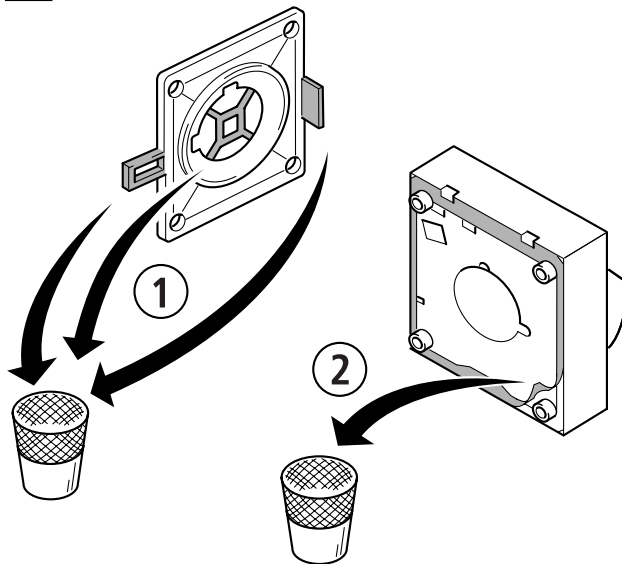
6



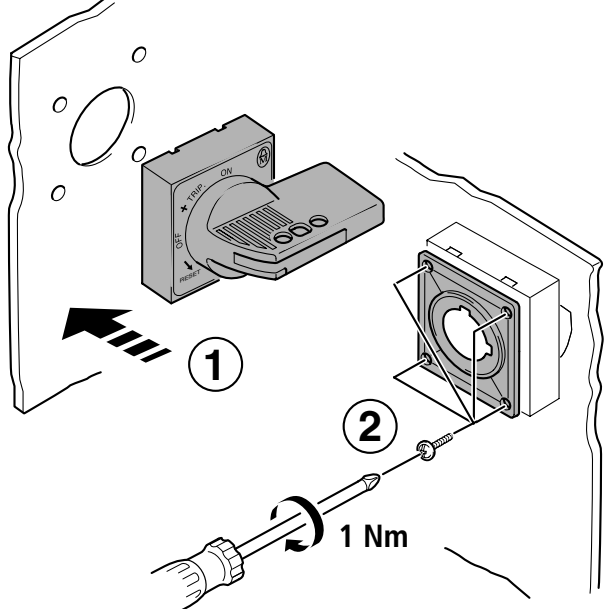
7



8



9



11/00 AWA1230-1906