

Eaton – Advanced Energy Management



xSpider 3.2

The New Generation of Software for Dimensioning
and Calculation of Low-Voltage Networks



EATON

Powering Business Worldwide

xSpider 3.2 creates your networks

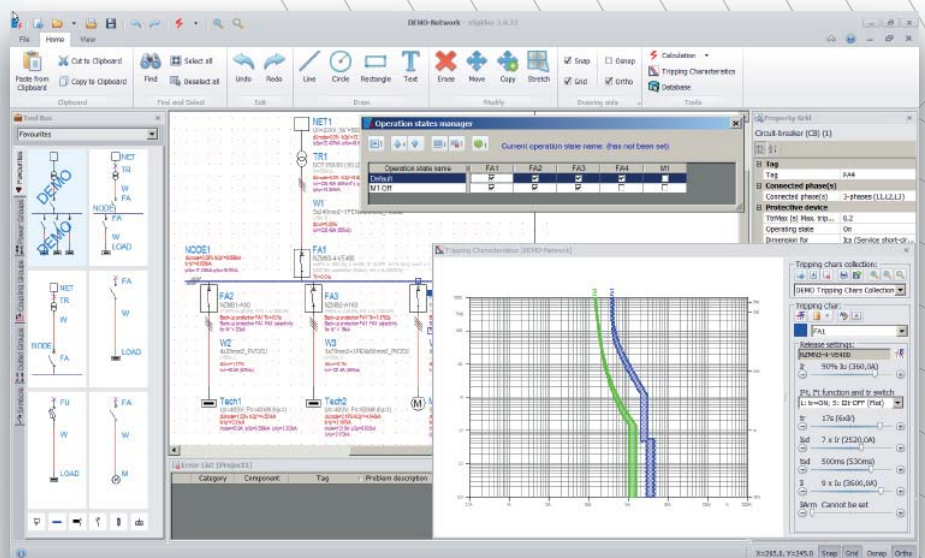
The xSpider software is a graphically oriented design system for dimensioning of low-voltage networks fitted with Eaton brand circuit protection equipment.

It calculates voltage drops, load distributions and short-circuit currents for radial as well as meshed networks and carries out a subsequent check on the suitability of the cables and protection equipment used. The software is intended primarily for designers and computational engineers.

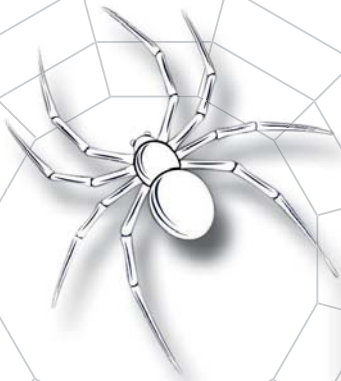
Version 3 is a new software generation. It includes a new graphics and computing core, a new user interface. The features contained in previous version 2 are retained and are complemented with new features. The computation procedures are updated according to current standards.

General features

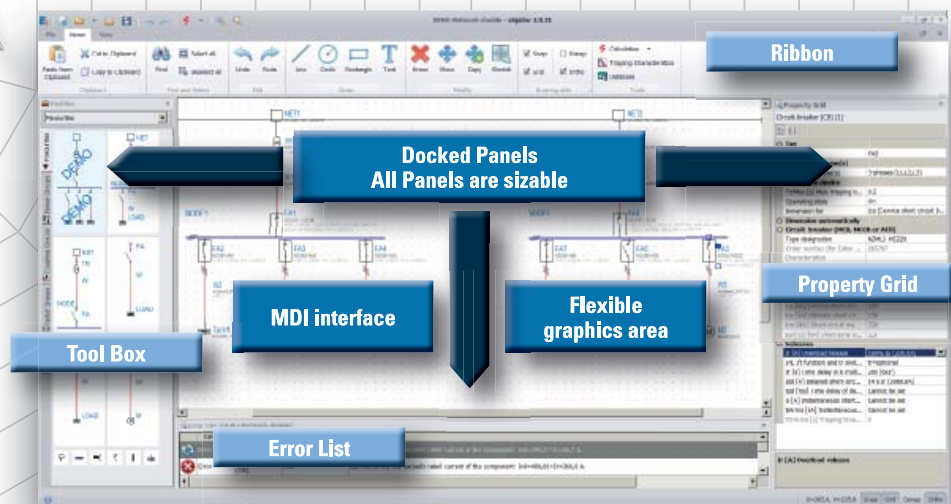
- Suitable for TN / IT / TT network systems of different voltage systems up to 1000V.
- Design of radial as well as meshed networks.
- Design of networks supplied from one or more different power supplies (supply network, transformer, generator), design of networks supplied concurrently from different power sources.
- Option of simulating various operating states of the network by disconnecting power sources and loads; an operating status manager is available.
- Option of defining simultaneous (Ks) and utilization factors (Ku).
- Database of components with transparent tree structure allowing user-defined additions.
- All calculations (voltage drops, load distribution, impedance, short circuits, etc.) are based on applicable IEC standards.
- Coordination of protective devices (selectivity, back-up protection)
- Generation of documentation (wiring diagram with calculation results, calculation report, tables of element parameters and of calculation results).



User interface



- User-friendly interface allowing quick and easy entry of simple cases while maintaining the maximum variability and open-end character.
- Parallel display of wiring diagram + properties of elements + list of errors.
- Parallel processing of multiple projects (MDI interface). Transfer of objects between projects via clipboard.
- The software application is available in a variety of language mutations. Language version can be customized when you first start the program, and can be changed anytime later.



User operation similar to standard CAD systems (AutoCAD)

Wiring diagram

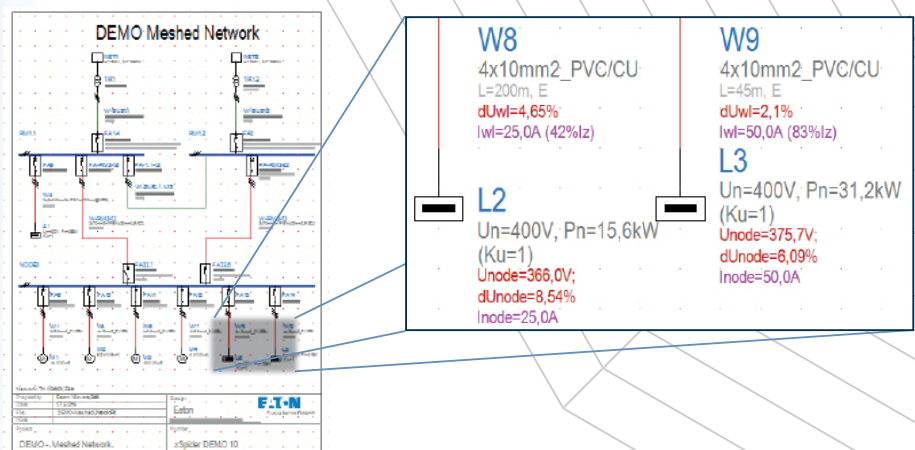
- The network wiring diagram (topology) is defined by combining the particular components (power sources, transformers, circuit lines, circuit protection equipment, loads) in the graphics.
- A function is available to insert standard component groups with a single click (power supply groups, couplings, outlets, ...).
- Option of adding free graphics (line, circle, rectangle, text).
- The method of selecting objects for editing can be customized (single selection, multiple selection, combined selection).
- Standard functions used for graphics editing are available (erase, move, copy, ...).
- Standard functions available for controlling the display (zoom, pan) controlled by the mouse wheel.

Parameters of network components, database of components

- Parameters of the inserted components (i.e. those components, which cannot be dimensioned within the program - power sources, loads, and transformers) must be entered immediately after inserting the respective component into the network wiring diagram.
- A database of standard components is available (generators, transformers, cables, bus-bar systems, surge arresters, circuit breakers, residual current devices, residual current devices with overcurrent protection, overload relays, fuses, switches, motors, compensations).
- The database contains Eaton products (switching and protective devices). The regional version can be customized when you first start the program, and can be changed anytime later (via File - Options).
- The database contains articles from other manufacturers, necessary to perform the calculation, often used in the given region.
- The database is built as open-ended and the user can add any components into the database that he uses in his projects. The option of adding items to the databases by the user is important in particular with components not supplied by Eaton (generators, transformers, cables, motors, compensation units). The Eaton product database cannot be customized.
- Products can be searched for from the database tree on the basis of technical parameters or data table based on the type designation.

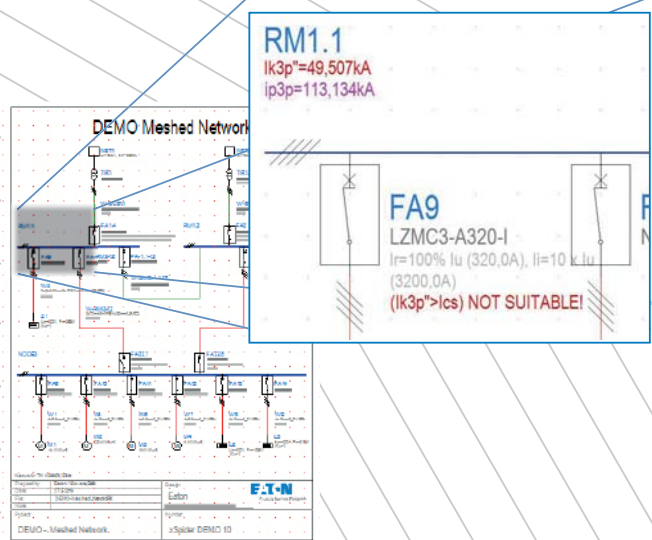
Calculations

- The calculations are based on IEC standards.
- TN, IT or TT systems are considered, depending on the user's selection, for the selected voltage system up to 1,000V (low voltage networks).
- **Voltage drops** in nodal points of the network (a check whether the drop exceeds the user-defined maximum value set locally for every network component). The utilization factor is always taken into account. For radial networks, the simultaneous factor is also taken into account.

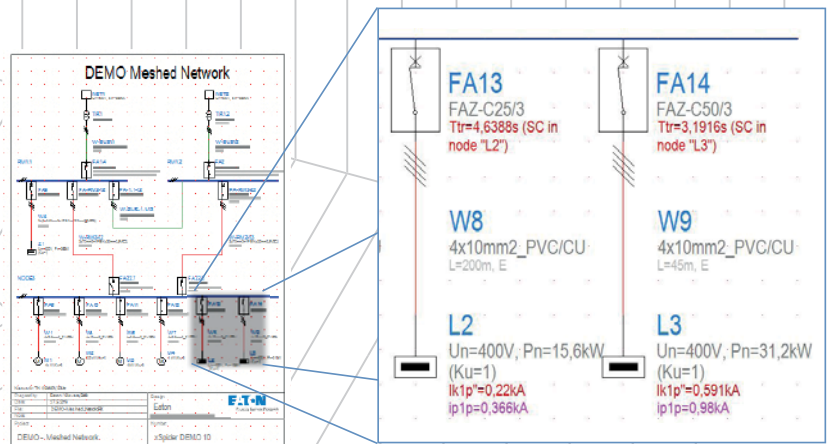
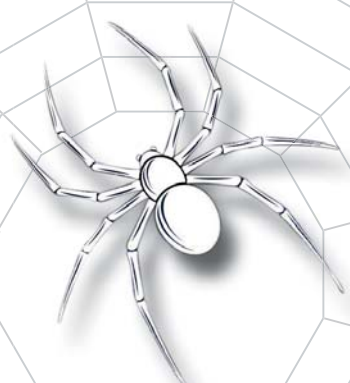


- Load distribution in the network lines (check on correct dimensioning of the circuit protection equipment and conductors according to IEC 60364-5-52), check on line protection for overload and short circuit according to IEC 60364-4-43. Power factor calculation for meshed networks.

- **Three-phase symmetric short circuit**, calculation according to IEC 60909 - calculation of the short-circuit current in the selected network point, distribution of short-circuit current flows in the network (check on correct dimensioning of the circuit protection equipment and conductors). The contribution from the motor is taken into account (if the motor is not connected through a soft starter or a frequency converter).



- Resolution of backup protection (cascading) – checking the breaking capacities of the outgoing protective components at the outgoers.
- Features for the assessment of selectivity of circuit breakers according to the selectivity tables.
- **Single-phase asymmetrical short circuit** against the ground, calculation according to IEC 60909 - calculation of the short-circuit current at the selected network point and of the short-circuit current flow in the network, calculation of impedance in the short-circuit point and of contact voltage in non-conductive parts. Calculation of the disconnection time for the short-circuit point and check on compliance with the requirements of IEC 60364-4-41, ed. 2.



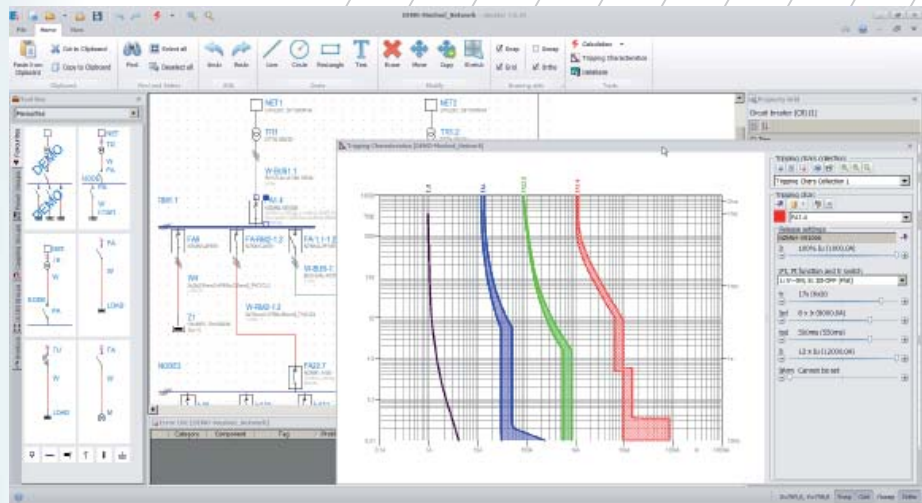
- Calculation of the positive and zero sequence components of impedance at the network node (which can be used for the subsequent design of the connected IT network, for instance).
- The calculation results can be displayed either as absolute values or as complex numbers; calculated impedances are not adjusted by any coefficients.

Displaying of results

- Calculation is followed by a display of the list of non-compliant elements (in parallel with the wiring diagram).
- After the calculation has been performed, the calculated values will be displayed for the individual components in the network wiring diagram. The diagram showing the results can be printed out. It can be printed on any output device, for which a driver is available in Windows (printer, plotter).
- After calculation, it is possible to generate a comprehensive report on the calculation and to print it.

Working with tripping characteristics

- The dialogue box with the tripping characteristics is shown in parallel with the wiring diagram.
- Selection of a protective device from the database and rendering of its tripping characteristic (including tolerance range if the necessary data is available).
- Selection of protective equipment from the network wiring diagram and drawing of its tripping characteristics - selectivity assessment possible.
- If a circuit protection device is equipped with adjustable releases, it is possible to modify all parameters available. If this was a device from the wiring diagram, the change of the release parameter setting is transferred back into the wiring diagram.
- It is also possible to work with the tripping characteristics independently without drawing a wiring diagram.



Project: storage, archiving, export

- Export of graphics to DXF data format (for their subsequent import to CAD systems). Export of graphics to PDF data format.
- Export of data tables (a list of network components with their parameters, a list of the networks with the calculation results, a list of cables) to XLS format.
- Export of calculation reports to DOC format (Microsoft Word) or to PDF format.
- Archiving of a project in a data file.
- Backward compatibility - you can import data files from an earlier version of xSpider.
- Compatibility between different regional and language versions (data files can be opened everywhere regardless of the language and regional version).

Hardware and software requirements

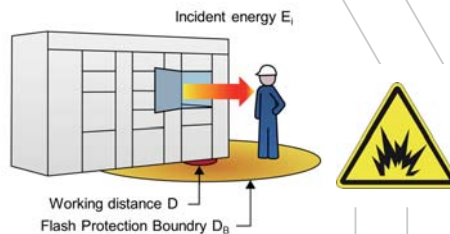
- PC, 1GB RAM or more, graphic card with the minimum resolution of 1024x768, monitor, mouse or other pointing device, an output device for printing.
- Min. 0.8 gigabytes of free hard disk space.
- NET Framework 4.0 installed (system libraries, a Windows component, available free from Microsoft).
- Installed Access Database Engine 2010 or higher (system libraries for working with databases, a standard part of Microsoft Office, or available free of charge from Microsoft).
- Operating system: Windows XP, Windows Vista, Win 7, Win 8, Win 10.



ArcRISK module

Arc Flash Risk Assessment in the LV switchboards

An electrical arc is caused between two energized parts of an electrical installation as a result of a fault or human error. The following high short circuit current creates immediately an Arc Flash, which is associated with the release of a large amount of heat energy that causes the copper and steel of the electrical equipment to melt and evaporate almost instantly. The result is a fiery explosion that has the capacity to produce extremely serious and fatal injuries.



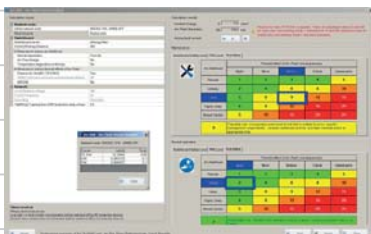
Risk assessment in LV switchboards

Professional risk assessment is required in order to quantify a potential risk caused by Arc Flash and properly protect staff from this risk.

- Risk assessment for electrical installations required by EN 50110-1, ed.3 2013. This is mandatory for all installations.
- Calculation of incident energy during arc flash according to IEEE 1584TM, 2002.
- ArcRISK is an effective tool for quick and professional evaluation of the safety level in Eaton switchboards.
- First software tool in its category.

Risk control of LV switchboards

Solutions for reducing arc flash generally involve decreasing fault clearing time, increasing the distance from the arc to the worker or reducing fault current. Eaton has solutions for all of these.



- Calculation of incident energy in the specified nodes of LV installation.
- Safety improvements with Eaton's protective measures:
 - Internal separation, Thermal diagnose, Arc free design
 - Passive protection of xEnergy (according to IEC TR 61644)
 - Active protection by ZSI, ARMS™, ARCON®
- A selection of suitable Arc Resistant Personal Protection Equipment (PPE) with respect to maintenance and normal operation.

How to obtain the xSpider software

- Go to the xSpider homepage:
 - 1) www.eaton.eu/xspider
 - 2) Search with any explorer (Google) such as: xSpider, or xSpider Eaton, etc.
 - Download the xSpider software *)
 - Installation of xSpider to a computer
 - xSpider icon is displayed on the screen - click on it
 - Start
- *) available also:
- PowerPoint presentations – quick overview about features
 - User manual is part of installation or available separately as a PDF file
 - Instruction videos help with quick understanding of operation

Technical support and troubleshooting: xspider@eaton.com

How to start the first job

The most effective way for quick learning is to start with the selected "DEMO Network" drawing, then look at Videos and follow the User manual, Part III.

- 1 DEMO drawing** – ready drawings with explanation of basic features. The DEMO drawing contains all basic components and allows immediate work with all xSpider features.
- 2 Videos** – typical situations in the everyday use of xSpider
- 3 User manual** – step-by-step explanation in Part III:
Part I: Theoretical Introduction
Part II: Program Operation
Part III: Solved Examples

Eaton is a power management company with 2017 sales of \$20.4 billion. We provide energy-efficient solutions that help our customers effectively manage electrical, hydraulic and mechanical power more efficiently, safely and sustainably. Eaton is dedicated to improving the quality of life and the environment through the use of power management technologies and services. Eaton has approximately 96,000 employees and sells products to customers in more than 175 countries.

For more information, visit Eaton.com.

More information available at the address:

www.xspider.eaton.eu
Eaton Industries (Austria) GmbH
Scheidgasse 42
1210 Wien
Austria

© 2018 Eaton Industries (Austria) GmbH
All Rights Reserved
Printed in Austria
Publication number BR014030EN
Article number 193283-MK
December 2018
Graphics: SRA, Schrems

Eaton is a registered trademark.

All other trademarks are property of their respective owners.

Follow us on social media to get the latest product and support information.



Powering Business Worldwide