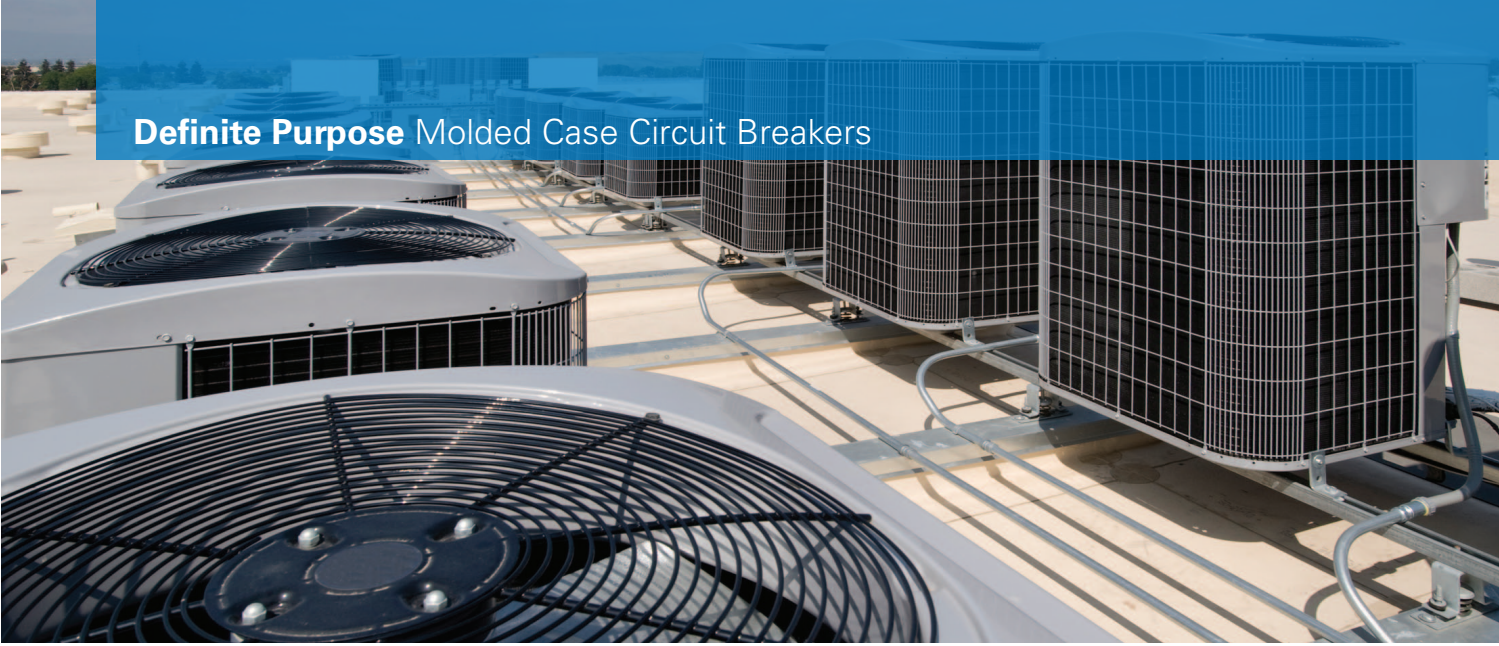


Definite Purpose Molded Case Circuit Breakers



Tailored for the HVAC/R industry and customizable to fit your application



The Definite Purpose Series of molded case circuit breakers are designed to address the specific requirements of the HVAC/R industry.

Increase profitability through reduced time and costs in production and testing.

Reduce cycle-time through world-class product delivery and support.

Confidence in providing your customer with the highest quality and safety.

Product Range

- 15A to 800A, up to 600 VAC
- Molded Case Circuit Breakers and Switches
- Standard and High-Interrupt Ratings
- Thermal-Magnetic Trip Unit

Features

- Standard configurations shipped within 2 days
- Industry-leading product and application support by experts located in the U.S.
- Short-circuit ratings for Eaton DP Breakers and contactors reduce time and cost spent qualifying systems
- Continued process improvement ensuring on-time delivery of high quality product
- Independent qualification and ongoing verification to UL489 product safety standards
- Wide-range of accessories and terminations available with the option of factory installation

EATON

Powering Business Worldwide

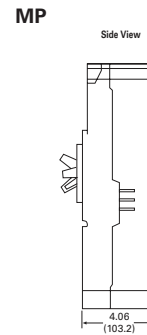
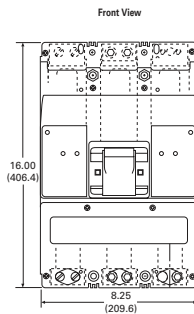
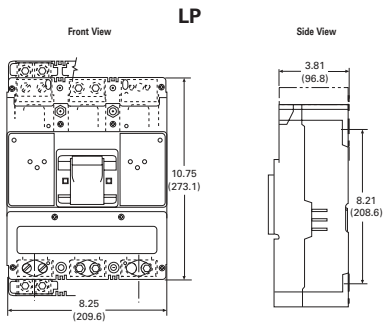
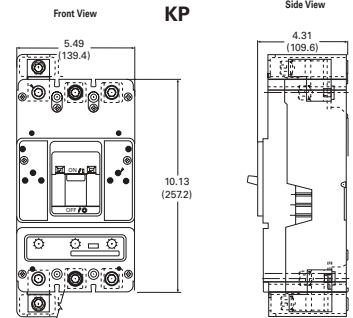
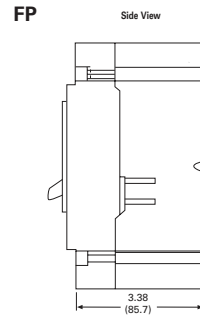
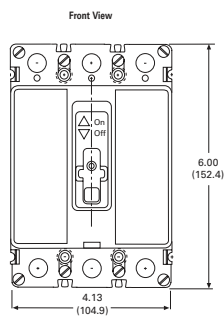
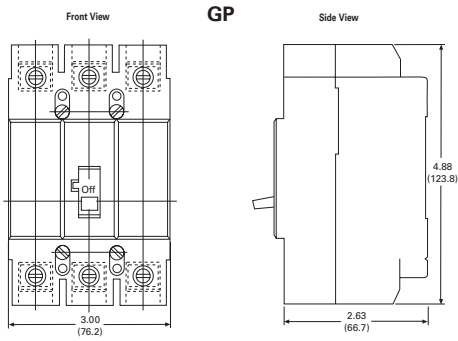


Eaton DP Breakers Specifications

Breaker Type		GP	FP			KP		LP		MP
Amperage range		15-100	15-225			200-400		450-600		700-800
Performance level		S	S	H	S	H	S	H	S	H
Breaker capacity (kA rms)	240 Vac	65	65	100	100	100	65	100	100	100
	480 Vac	22	35	65	35	65	35	65	50	65
NEMA®, UL®, CSA®	480 Vac	—	18	25	25	35	25	35	25	35
	600 Vac	—	18	25	25	35	25	35	25	35
Number of poles		3	3	3	3	3	3	3	3	3
Max voltage (Vac)		480	600	600	600	600	600	600	600	600
Dimensions (inches)	W	3.00	4.13	4.13	5.49	5.49	8.25	8.25	8.25	8.25
	H	4.88	6.00	6.00	10.13	10.13	10.75	10.75	16.00	16.00
	D	2.63	3.38	3.38	4.31	4.31	3.81	3.81	4.06	4.06

Optional Accessories

- DIN rail adapter
- Auxillary switch
- Shunt trip
- Under-voltage release
- Rotary and flex-shaft handle mechanisms
- Single and multi-wire terminals



Short Circuit Ratings for Eaton DP Breakers and DP Contactor / Starters Specifications

Contactor Rating	High Fault - 65 kA @ 480V
	Max Listed Circuit Breaker @ 480 VAC ①
15 A	60 A
25 A	60 A
30 A	60 A
40 A	80 A
50 A	100 A

① Minimum enclosure volume of 3.16 cu. ft. and must have 3 latching means.

Eaton Corporation
 Electrical Group
 1000 Cherrington Parkway
 Moon Township, PA 15108
 United States
 877-ETN-CARE (877-386-2273)
 Eaton.com/DPBREAKER

© 2012 Eaton Corporation
 All Rights Reserved
 Printed in USA
 Publication No. PA1215002E / VCG1201
 March 2012