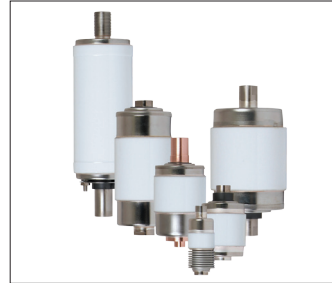


Medium Voltage Components



VCP-W medium voltage circuit breakers

- Common platform: 5–38 kV, 16–75 kA, 600–6000A, 7000A F/C
- Commercial to utility grade, including VCP-W with K=1 ratings
- Numerous product variations: narrow design, extra capability and generator breaker designs
- Built and tested to meet ANSI, IEC and GB standards
- Full line of OEM components and accessories



Contactor vacuum interrupters

- Rated line-to-line voltages (50/60 Hz) 1.5–15 kV
- Rated short circuit current (symmetrical) 1.5–12 kA
- Rated continuous current 150–1400A
- Offerings to meet IEEE/ANSI, IEC and GB standards



VCP-T medium voltage circuit breakers

- Common platform: 5–15 kV, 16–40 kA, 600–2500A
- Compact: 60% smaller and 50% lighter than comparable breakers
- Spring and magnetic actuated mechanisms are available
- Accessories and OEM components are available
- Built and tested to meet ANSI and IEC standards
- Designed for use where space is at a premium



Load break switch vacuum interrupters

- Rated line-to-line voltages (50/60 Hz) 4.76–38 kV
- Rated short circuit breaking current 2 kA
- Rated continuous current 200–1250A
- Offerings to meet IEEE/ANSI, IEC and GB standards
- Solid insulation for increased external dielectric performance



Expulsion fuses

- Applications: distribution, power and potential transformers, feeder circuit sectionalizing, load interrupter switchgear, high voltage capacitors, pad-mounted transformers and switches
- Up to 145 kV maximum rating
- ANSI rated



Circuit breaker/recloser vacuum interrupters

- Rated line-to-line voltages (50/60 Hz) 4.76–40.5 kV
- Rated short circuit current (symmetrical) 6–80 kA
- Rated continuous current 630–4000A
- Offerings to meet IEEE®/ANSI, IEC and GB standards
- Solid insulation for increased external dielectric performance



Current limiting fuses

- Applications: power and potential transformers, fused switches, feeder circuit sectionalizing, AMPGARD® motor starters, pad-mounted transformers, station service, power centers, load interrupters and mine rectifiers
- Up to 38 kV maximum rating
- ANSI rated
- Replacement/interchangeability with most brands

Eaton Corporation
 Electrical Sector
 1111 Superior Ave.
 Cleveland, OH 44114
 United States
 877-ETN-CARE (877-386-2273)
 Eaton.com

© 2010 Eaton Corporation
 All Rights Reserved
 Printed in USA
 Publication No. SA01300001E / Z9558
 January 2010



PowerChain Management is a registered trademark of Eaton Corporation.

All other trademarks are property of their respective owners.