



JS Series

Description:

Eaton Heinemann hydraulic-magnetic circuit breakers are reducing your total cost of ownership by avoiding down time on nuisance tripping and optimizing the cross section of cables. This enhances your reputation and improves your profitability over time.



Benefits:

Eaton Heinemann circuit breakers avoid nuisance tripping caused by:

- High starting current on motor start or capacitive circuits
- Derating of tripping value due to ambient T° variations
- Interferences caused by long wiring acting like antenna
- Chock and vibrations

In addition they offer a proven longevity and are maintenance free.

Series advantages

- The Eaton Heinemann JS series is a very compact and light hydraulic-magnetic circuit protector up to 50A applications in both DC and AC applications.
- Benefiting from all advantages for the hydraulic-magnetic technology, JS series allows a very precise and reliable current overload and short circuit protection.
- It's construction flexibility allows configuration in multi-poles version (up to 4) with an assembly where trip mechanisms are internally coupled. As a result, any fault on one of the coupled poles will simultaneously open all poles and allow an efficient and reliable protection of multi phases circuits..

Performance:

- Electrical protection from 0.1 to 50 amperes for tensions up to 80 VDC or 415 VAC
- Interrupting capacity up to 5 000 amperes
- Large choice of delay curves and internal circuit
- Fixed current tripping value between -40°C and +80°C
- Compliance with last standards such as NF EN 45545 for fire and smoke
- UL, VDE, CSA, CE, GOST and CCC approved

Additional features:

- In-Rush capabilities (8x - 15x - 22xIn) in standard
- Auxiliary contacts: single (SPDT) or double (DPDT), protected or not on same pole
- Mid-Trip and alarm switch options with or without test button
- Different types of handles (toggle short, long or rocker)
- Large choice of terminals (fast-on single or double, screw...) in different configurations



Powering Business Worldwide

Electrical characteristics

Parameter	Detail	
Rating	DC: 0.1 - 50A AC: 0.1 - 30A	
Voltage range	DC: 80 Vdc AC: 415 Vac	
Breaker ratings	65 Vdc:	50A
	80 Vdc:	30A
	250V 50/60/400 Hz:	30A
	415V 50/60 Hz:	30A
Interrupting capacity	32 Vdc:	5 kA
	80 Vdc:	1.5 kA
	250V 50/60 Hz:	5 kA
	415V 50/60 Hz:	5 kA
	240V 400 Hz:	1kA
Dielectric strength	3750 Vac 50/60 Hz	
Insulation resistance	100 MOhm @ 500 Vdc	

Trip specification

Parameter	Detail
Trip options	Series, shunt, relay, remote trip off (Ducon), switch, dual-rating
Trip delay	Instantaneous, short, medium, long delay
High inrush	50Hz : 8x, 15x, 22xIn

Operating conditions, standards and approvals

Code	Detail
Operating temperature	-40°C to +85°C (-40°F to +185°F)
Shock	IEC 60068-2-27, MIL-STD-202 method 213
Vibration	IEC 60068-2-6 MIL-STD-202 method 204
Humidity	IEC 60068-2-78, MIL-STD-202 method 103
Approvals	UL, CE, VDE, CSA, CCC
Approvals - Rail	NFF, IEC, ASTM, Bombardier SMP, Boeing BSS, SNCF,GOST
Auxiliary contacts	C-NO-NC, Simple or double both protected or not-protected
Mid Trip	Optional

Physical characteristics

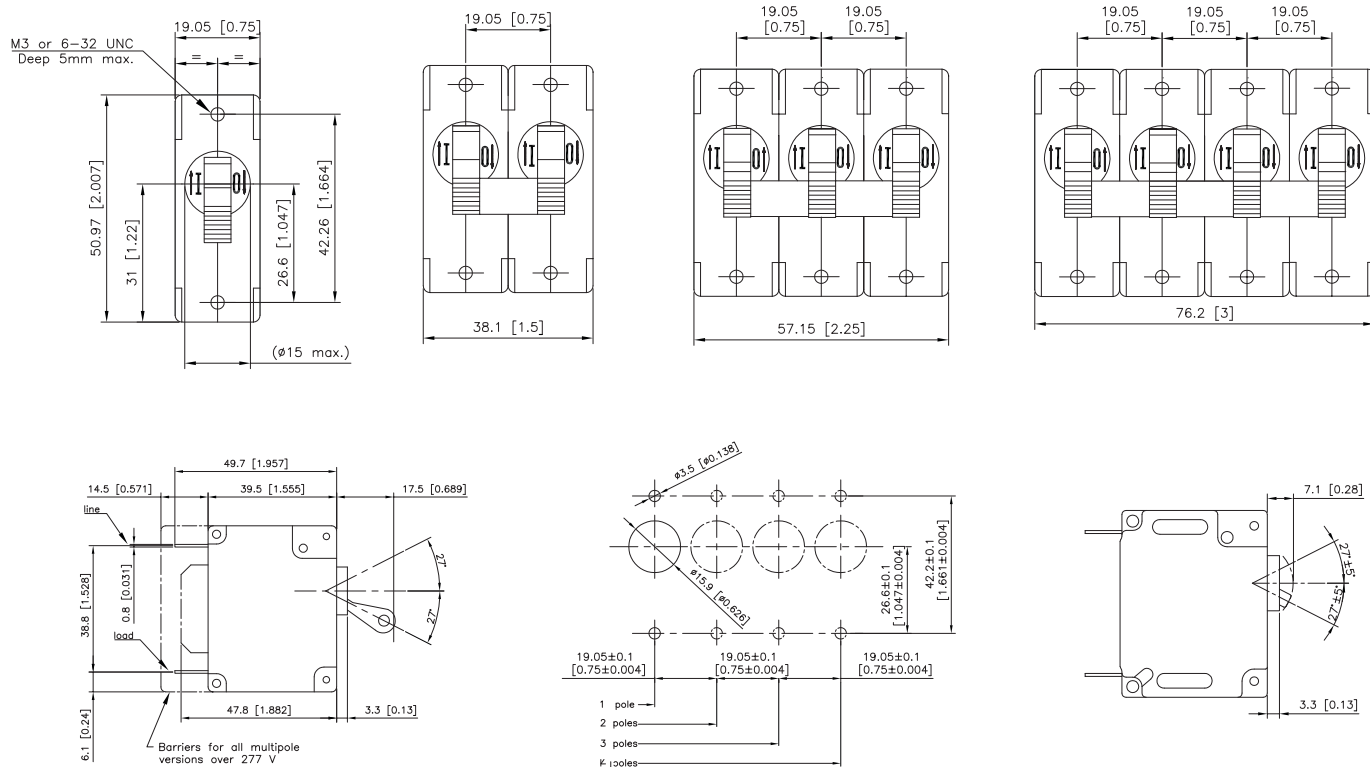
Parameter	Detail
Poles	1 to 4 poles
Dimensions WxHxD (per pole)	19 x 51 x 49.5 mm
Weight / pole	65 g

Mounting, Handle, Terminals

Parameter	Detail
Mounting styles	Front, Snap-in, DIN adapt
Handle	Toggle, rocker, metal sealed
Power terminals	Fast-on, screw terminals, PCB
Power connection	Rear

Note: Technical information may differ by product variation, please contact your Eaton representative for more detailed information. In the interests of continual product improvement all specifications are subject to change without notice.

Product sizes



Eaton
 EMEA Headquarters
 Route de la Longeraie 7
 1110 Morges, Switzerland
 Eaton.eu

Eaton
 Place de la Gare 2
 1345 Le Lieu
 Switzerland
 LeLieuSwitzerland@eaton.com