

Cable limiters



Protect cables against short-circuit currents while increasing system reliability



Designed for the protection of low voltage distribution networks and service entrance cables.

Product description:

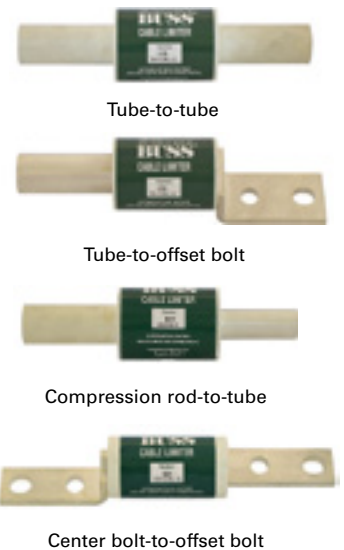
Eaton's Bussmann® series cable limiters provide short-circuit protection to electrical systems, typically between the transformer and service entrance. Bussmann series cable limiters remove the affected cable(s) from service and permit the other conductors to continue delivering power.

Rated at 250Vac for conductors 2/0AWG to 600kcmil and 600Vac for conductors 12AWG to 1000kcmil, cable limiters are available for many applications.

Features and benefits:

- Available with tube-to-tube (crimp), tube-to-bolt (crimp/bolt-in), compression rod-to-tube and center/offset bolted terminal options, which allows installation in various applications.
- To help achieve code compliance KCD, KCJ, KCM, KCR, KDM, KDR Bussmann series cable limiters are UL Listed for use on 600V circuits for the protection of faults up to 200kA.
- Cable limiters isolate the fault to one or more conductors and only the affected cable is removed from service by the cable limiter, permitting convenient scheduling of repairs.

K Series 600Vac cable limiters



Dimensions - in (mm)

Figure 1. Tube-to-tube terminals

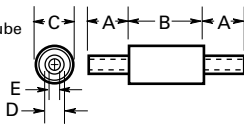


Figure 2. Tube-to-off set bolt terminals

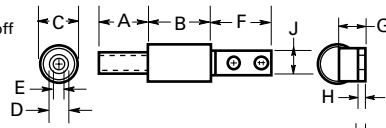


Figure 3. Compression rod-to-tube terminals

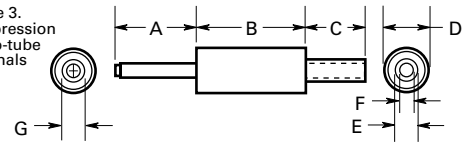
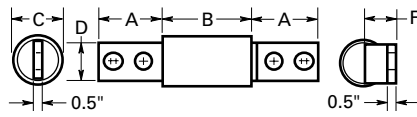
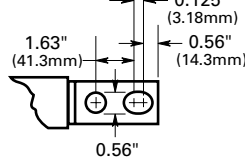


Figure 4. Center bolt-to-offset bolt terminals



Common detail for bolt terminals



250 volt copper and aluminum cable limiters with center bolt-to-offset bolt terminals

Catalog symbol	Cable size	
	Copper	Aluminum
UHA	2/0-3/0AWG	4/0AWG
UHJ-M	3/0AWG	250kcmil
UHJ-T	350kcmil	500kcmil
UHJ-W	600kcmil	800kcmil

600Vac – Cable limiters

Catalog symbol	Cable size	Dimensions- in(mm)									
		A	B	C	D	E	F	G	H	J	
Tube-to-tube terminals (Figure 1) copper cables only											
KCY	4AWG	1.25 (31.8)	2.88 (73)	1.06 (27)	0.31 (7.9)	0.25 (6.4)	—	—	—	—	
KCZ	3AWG	1.25 (31.8)	2.88 (73)	1.06 (27)	0.34 (8.7)	0.28 (7.1)	—	—	—	—	
KCA	2AWG	1.25 (31.8)	2.88 (73)	1.06 (27)	0.44 (11.1)	0.31 (7.9)	—	—	—	—	
KCB	1AWG	1.25 (31.8)	2.88 (73)	1.06 (27)	0.47 (11.9)	0.34 (8.7)	—	—	—	—	
KCC	1/0AWG	1.5 (38.1)	2.625 (66.7)	1.25 (31.8)	0.52 (13.1)	0.39 (9.9)	—	—	—	—	
KCD†	2/0AWG	1.63 (41.3)	2.625 (66.7)	1.25 (31.8)	0.44 (14.3)	0.70 (11.1)	—	—	—	—	
KCE	3/0AWG	1.63 (41.3)	3.63 (92.1)	1.44 (36.5)	0.61 (15.5)	0.48 (12.3)	—	—	—	—	
KCF	4/0AWG	1.75 (44.5)	3.63 (92.1)	1.44 (36.5)	0.34 (17.5)	0.55 (14)	—	—	—	—	
KCH	250kcmil	1.88 (47.6)	3.63 (92.1)	1.44 (36.5)	0.75 (19)	0.28 (15.1)	—	—	—	—	
KCJ*	350kcmil	2 (50.8)	3.63 (92.1)	1.63 (41.3)	0.88 (22.2)	0.70 (17.9)	—	—	—	—	
KCM*, **	500kcmil	2.88 (73)	3.08 (78.2)	1.88 (47.6)	1.06 (27)	0.83 (21)	—	—	—	—	
KCV	600kcmil	3.5 (88.9)	3.08 (78.2)	1.88 (47.6)	1.155 (29.3)	0.92 (23.4)	—	—	—	—	
KCR†	750kcmil	3.5 (88.9)	3.75 (95.25)	2.5 (63.5)	1.31 (33.3)	1.06 (27)	—	—	—	—	
KCS	1000kcmil	5 (127)	3.75 (95.25)	2.5 (63.5)	1.56 (39.7)	1.22 (31)	—	—	—	—	
Tube-to-offset bolt terminals (Figure 2) copper cables only											
KQV	12AWG	1.25 (31.8)	2.88 (73)	1.06 (27)	0.19 (4.8)	0.125 (3.2)	3.31 (84.1)	0.72 (18.3)	0.19 (4.8)	1.125 (28.6)	
KQT	10AWG	1.25 (31.8)	2.88 (73)	1.06 (27)	0.23 (6)	0.14 (3.6)	3.31 (84.1)	0.72 (18.3)	0.19 (4.8)	1.125 (28.6)	
KFZ	8AWG	1.25 (31.8)	2.88 (73)	1.06 (27)	0.23 (6)	0.16 (4)	3.31 (84.1)	0.72 (18.3)	0.19 (4.8)	1.125 (28.6)	
KIG	6AWG	1.25 (31.8)	2.88 (73)	1.06 (27)	0.31 (7.9)	0.16 (4)	3.31 (84.1)	0.72 (18.3)	0.19 (4.8)	1.125 (28.6)	
KDY	4AWG	1.25 (31.8)	2.88 (73)	1.06 (27)	0.31 (7.9)	0.25 (6.4)	3.31 (84.1)	0.72 (18.3)	0.19 (4.8)	1.125 (28.6)	
KDA	2AWG	1.25 (31.8)	2.88 (73)	1.06 (27)	0.44 (11.1)	0.31 (7.9)	3.31 (84.1)	0.72 (18.3)	0.19 (4.8)	1.125 (28.6)	
KDB	1AWG	1.25 (31.8)	2.88 (73)	1.06 (27)	0.47 (11.9)	0.34 (8.7)	3.31 (84.1)	0.72 (18.3)	0.19 (4.8)	1.125 (28.6)	
KDC	1/0AWG	1.5 (38.1)	2.625 (66.7)	1.25 (31.8)	0.52 (13.1)	0.39 (9.9)	3.38 (85.7)	0.88 (22.2)	0.25 (6.4)	1.125 (28.6)	
KDD	2/0AWG	1.63 (41.3)	2.625 (66.7)	1.25 (31.8)	0.56 (14.3)	0.44 (11.1)	3.38 (85.7)	0.88 (22.2)	0.25 (6.4)	1.125 (28.6)	
KDE	3/0AWG	1.63 (41.3)	3.63 (92.1)	1.44 (36.5)	0.61 (15.5)	0.48 (12.3)	3.38 (85.7)	0.97 (24.6)	0.25 (6.4)	1.125 (28.6)	
KDF	4/0AWG	1.75 (44.5)	3.63 (92.1)	1.44 (36.5)	0.69 (17.5)	0.55 (13.9)	3.38 (85.7)	0.97 (24.6)	0.25 (6.4)	1.125 (28.6)	
KDH	250kcmil	1.88 (47.6)	3.63 (92.1)	1.44 (36.5)	0.75 (19)	0.59 (15.0)	3.38 (85.7)	0.97 (24.6)	0.25 (6.4)	1.125 (28.6)	
KDJ*	350kcmil	2 (50.8)	3.63 (92.1)	1.63 (41.3)	0.88 (22.2)	0.70 (17.8)	3.38 (85.7)	1.06 (27.0)	0.25 (6.4)	1.125 (28.6)	
KDM*, **, †	500kcmil	2.88 (73.0)	3.08 (78.2)	1.88 (47.6)	1.06 (27)	0.83 (21)	3.38 (85.7)	1.19 (30.2)	0.25 (6.4)	1.63 (41.3)	
KDU	600kcmil	3.5 (88.9)	3.75 (95.2)	2.5 (63.5)	1.16 (29.4)	0.92 (23.4)	3.5 (88.9)	1.5 (38.1)	0.25 (6.4)	2 (50.8)	
KDR*, †	750kcmil	3.5 (88.9)	3.75 (95.2)	2.5 (63.5)	1.31 (33.3)	1.06 (27)	3.5 (88.9)	1.5 (38.1)	0.25 (6.4)	2 (50.8)	
Compression rod-to-tube terminals (Figure 3) copper cables only											
KEX	4/0AWG	2.5 (63.5)	3.63 (92.1)	1.75 (44.5)	1.44 (36.5)	0.69 (17.5)	0.55 (13.9)	0.5 (12.7)	—	—	
KFH-A	250kcmil	2.5 (63.5)	3.63 (92.1)	1.88 (47.6)	1.44 (36.5)	0.75 (19.0)	0.28 (15.1)	0.56 (14.3)	—	—	
KQO	350kcmil	2.5 (63.5)	3.63 (92.1)	2 (50.8)	1.63 (41.3)	0.88 (22.2)	0.7 (17.8)	0.81 (20.6)	—	—	
KDT*	500kcmil	2.5 (63.5)	3.08 (78.2)	2.88 (73)	1.88 (47.6)	1.06 (27.0)	0.83 (21.0)	0.81 (20.6)	—	—	
Center bolt-to-offset bolt terminals (Figure 4) copper or aluminum cables											
KPF	4/0AWG	3.38 (85.7)	3.63 (92.1)	1.44 (36.5)	1.125 (28.6)	1.125 (28.6)	0.97 (24.6)	—	—	—	
KFT	250kcmil	3.38 (85.7)	3.63 (92.1)	1.44 (36.5)	1.125 (28.6)	1.125 (28.6)	0.97 (24.6)	—	—	—	
KEW	350kcmil	3.38 (85.7)	3.63 (92.1)	1.63 (41.3)	1.125 (28.6)	1.125 (28.6)	1.06 (27)	—	—	—	
KDP†	500kcmil	3.38 (85.7)	3.08 (78.2)	1.88 (47.6)	1.5 (38.1)	1.63 (41.3)	1.19 (30.2)	—	—	—	
KFM†	750kcmil	3.5 (88.9)	3.75 (95.3)	2.5 (63.5)	2 (50.8)	2 (50.8)	1.5 (38.1)	—	—	—	

*Available with shrink tube “-V” suffix.

**Available with molded rubber boot “-B” suffix. Boot can be purchased separately

KCM: Part# - ____ Boot-KCM KDM: Part# - ____ Boot-KDM

†UL Listed file E90818, 600Vac 200kA A.I.R.

See data sheet No. 1042 for more information.

Eaton
1000 Eaton Boulevard
Cleveland, OH 44122
United States
Eaton.com

Bussmann Division
114 Old State Road
Ellisville, MO 63021
United States
Eaton.com/bussmannseries

© 2016 Eaton
All Rights Reserved
Printed in USA
Publication No. 3129
January 2016

For Eaton’s Bussmann series product information, call 1-855-287-7626 or visit: Eaton.com/bussmannseries

Eaton and Bussmann are valuable trademarks of Eaton in the US and other countries. You are not permitted to use the Eaton trademarks without prior written consent of Eaton.

UL is a registered trademark of the Underwriters Laboratories, Inc.

Follow us on social media to get the latest product and support information.

