

# Steel 41 Series Padlocks



## Description

Bussmann 41 series laminated steel padlocks provide an extra level of corrosion resistance with their individually coated steel plates. Featuring a hardened steel shackle and vinyl bumper for easy identification and added protection.

## Design

- Laminated steel with a non-hazardous, cadmium-free plating for extreme corrosion resistance
- Laminates individually treated for top corrosion protection
- Rivets concentrated on the outer laminate to protect the rivet heads from being chipped off
- Hardened shackle, double bolt locking mechanism, made from special alloy
- Self-locking - locking without key simply by pushing down the shackle
- Precision pin tumbler cylinder
- Multiple colors and two shackle heights available
- Available keyed-different
- Includes 2 keys

## Catalog symbol

- LO41KD3-4\_ (3/4" shackle, multiple colors)
- LO41KD2\_ (2" shackle, multiple colors)

## Variants

- Colors: red, green, blue, yellow
- Shackle sizes: 3/4" and 2"

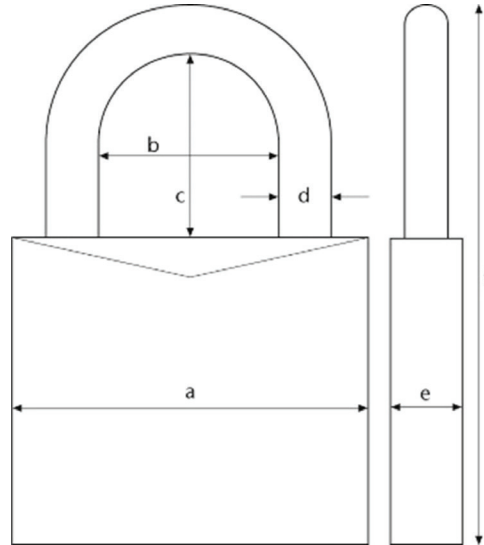
## Use and application

- Laminated steel offers superior rust protection and withstands extreme weather conditions and physical abuse
- Ideal for extreme outdoor and harsh environments

## Specifications

**Table 1: Specifications**

	LO41KD3-4	LO41KD2
Lock body material	Steel	Steel
Locking type	key	key
Colors	red, green, blue, yellow	red, blue, yellow
Width A:	1-1/2"	1-1/2"
Horizontal clearance B:	13/16"	13/16"
Vertical clearance C:	3/4"	2"
Shackle diameter D:	1/4"	1/4"
Depth E:	1 1/32"	1 1/32"
Height F:	2 23/64"	3 27/64"
Weight (lbs)	.46 lbs	.54 lbs
Shackle material	Steel	Steel
Pins in cylinder	4	4



## Products for your lockout tagout process

Bussmann offers a variety of padlocks and devices to help build a comprehensive lockout tagout program.

- Aluminum 72 Series padlocks
- Nylon 74 Series padlocks
- Steel 41 Series padlocks
- Circuit breaker lockout devices
- Lockout hasps
- Plug lockout devices
- Push button lockout devices
- Wall switch lockout devices
- Lockout tags
- Group lockout boxes

**Eaton**  
 1000 Eaton Boulevard  
 Cleveland, OH 44122  
 Eaton.com

Bussmann Division  
 114 Old State Road  
 Ellisville, MO 63021  
 United States  
 Eaton.com/bussmannseries

© 2023 Eaton  
 All Rights Reserved  
 Printed in USA  
 Publication No. 11313  
 September 2023

For Eaton's Bussmann series product information, call **1-855-287-7626** or visit: **Eaton.com/bussmannseries**



Eaton and Bussmann are valuable trademarks of Eaton in the U.S. and other countries. You are not permitted to use the Eaton trademarks without prior written consent of Eaton.

Follow us on social media to get the latest product and support information.

