

Nylon 74 Series Padlocks



Description

Bussmann 74 series safety padlocks feature a plastic-covered aluminum lock body and shackle for intrinsically safe protection. Both the body and shackle are insulated to protect against electrical shock, helping keep equipment and employees safe from hazardous areas. This lock is ideal for hot environments as well as industrial environments.

Design

- Solid aluminum body, protected by ABS cover
- Shackle made from steel with plastic coating
- Brass cylinder and key, nickel plated
- Compact, lightweight, and superior corrosion and chemical resistance
- Good heat resistance
- Double bolt locking mechanism
- Key retaining function – key can only be pulled out when padlock is fully locked
- Ships with labels in English, Spanish, and French
- Available in 4 colors and multiple shackle heights
- Available in regular and long-body
- Available keyed-different
- Includes 1 key

Catalog symbol

- LO74KD1-5_ (1 ½" shackle, multiple colors)
- LO74HBKD3_ (3" shackle, multiple colors)
- LO74LBKD1-5_ (long body, 1 ½" shackle, multiple colors)

Variants

- Colors: red, green, blue, yellow
- Shackle sizes: 1 ½" and 3"
- 1 ½" shackle also comes in a long body design

Use and application

- Lightweight nylon padlocks are ideal for industrial environments
- Most-common for indoor applications
- Ideal for any program requiring "one lock – one key"

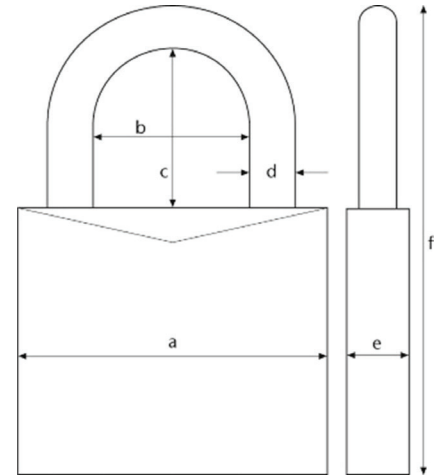


Powering Business Worldwide

Specifications

Table 1: Specifications

	LO74KD1-5_	LO74HBKD3_	LO74LBKD1-5_	Color
Lock body material	Nylon	Nylon	Nylon	
Locking type	key	key	key	
Part numbers	LO74KD1-5RED	LO74HBKD3RED	LO74LBKD1-5RED	Red
	LO74KD1-5GRN	LO74HBKD3GRN	LO74LBKD1-5GRN	Green
	LO74KD1-5YEL	LO74HBKD3YEL	LO74LBKD1-5YEL	Yellow
	LO74KD1-5BLU	LO74HBKD3BLU	LO74LBKD1-5BLU	Blue
Width A:	1-1/2"	1-1/2"	1-1/2"	
Horizontal clearance B:	3/4"	3/4"	3/4"	
Vertical clearance C:	1 1/2"	3"	1 1/2"	
Shackle diameter D:	1/4"	1/4"	1/4"	
Depth E:	25/32"	25/32"	25/32"	
Height F:	3 35/64"	4 61/64"	4 23/32"	
Weight (lbs)	.19 lbs	.23 lbs	.24 lbs	
Shackle material	Plastic-coated steel	Plastic-coated steel	Plastic-coated steel	



Chemical resistance

All approved chemicals listed are based on the manufacturers' specified chemical. Resistance chart for the plastic material only.

Table 2: Chemical resistance

Chemical	Grade
Mineral lubricants	Resistant
Aliphatic hydrocarbons	Resistant
Aromatic hydrocarbons	Not resistant
Gasoline	Resistant
Weak mineral acids	Resistant
Strong mineral acids	Not resistant
Weak organic acids	Resistant
Strong organic acids	Conditionally resistant
Oxidizing acids	Not resistant
Weak bases	Resistant
Trichloroethylene	Not resistant
Perchloroethylene	Conditionally resistant
Acetone	Conditionally resistant
Alcohols	Conditionally resistant
Hot water (hydrolysis resistance)	Resistant
UV light and weather	Conditionally resistant

Temperature range

- -4°F to 194°F (-20°C to 90°C)
- Flame rating: UL94HB

Products for your lockout tagout process

Bussmann offers a variety of padlocks and devices to help build a comprehensive lockout tagout program.

- Aluminum 72 Series padlocks
- Nylon 74 Series padlocks
- Steel 41 Series padlocks
- Circuit breaker lockout devices
- Lockout hasps
- Plug lockout devices
- Push button lockout devices
- Wall switch lockout devices
- Lockout tags
- Group lockout boxes

Eaton
1000 Eaton Boulevard
Cleveland, OH 44122
Eaton.com

Bussmann Division
114 Old State Road
Ellisville, MO 63021
United States
Eaton.com/bussmannseries

© 2023 Eaton
All Rights Reserved
Printed in USA
Publication No. 11312
September 2023

For Eaton's Bussmann series product information, call **1-855-287-7626** or visit: **Eaton.com/bussmannseries**

Follow us on social media to get the latest product and support information.



Eaton and Bussmann are valuable trademarks of Eaton in the U.S. and other countries. You are not permitted to use the Eaton trademarks without prior written consent of Eaton.