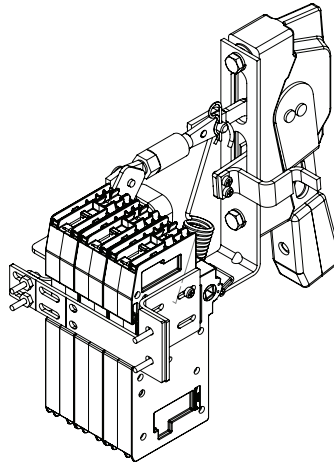


CCP2-FLR1-21_ flange-rod operating mechanism



General information

These instructions cover the installation and operation of the Bussmann™ series CCP2-FLR1-_ and CCP2-FLR2-_ flange rod operating mechanisms installed on 2- or 3-pole versions of the fused 30, 60 and 100 amp Compact Circuit Protector (CCP2) disconnect switches, and 3-pole versions of the non-fused 30, 60 and 100 amp Compact Circuit Disconnect (CCD2) disconnect switches.

The flange rod handle mechanism provides an external means to operate the CCP2 and CCD2 switches. The standard handle is for NEMA 1, 3R, and 12 enclosures while the chrome handle version is for NEMA 4X enclosures.

Using the CCP2-FLR1_ for CCP2 and CCD2 switches precludes using the optional PLC fuse monitor and auxiliary contacts.

Full installation utilizes the operating handle, rod and assembled switch mechanism.

Contents

Description	Page
General information	1
Required tools	2
Hardware contents	2
Installation and adjustment	2-6
Flange drilling pattern	7

DANGER

HAZARD OF ELECTRIC SHOCK, EXPLOSION OR ARC FLASH

MAY RESULT IN DEATH OR SERIOUS INJURY

Working on or near energized circuits poses a serious risk of electric shock. De-energize all circuits before installing or servicing this equipment and follow all prescribed safety procedures.

- Do not install or perform maintenance on equipment while it's energized.
- Death, severe personal injury or substantial property damage can result from contact with energized equipment. Always verify that no voltage is present, and prescribed safety and lockout/tagout procedures are followed.
- Eaton is not liable for the misapplication or mis-installation of this product.
- The user is cautioned to observe all recommendations, warnings and cautions relating to personnel and equipment safety, as well as all general and local health and safety laws, codes and procedures.
- The recommendations and information contained herein are based on experience and judgment, but should not be considered to be all-inclusive or covering every application or circumstance which may arise. If any questions arise, contact the Bussmann Division for further information or instructions.

Required tools

- #1 phillips head screwdriver
- Needle nose pliers
- 5/16" open end wrench
- 7/16" open end wrench
- 9/16" open end wrench
- #8-32 tap and suitable drill bit
- Pliers
- Electric drill
- Hacksaw
- Metal file

Before proceeding, please review flange rod operator kit contents to be sure all parts are included. If any are missing, please contact your local Bussmann series product representative.

Part 1 — Mount flange handle onto enclosure

Refer to Fig. 1-1 and Fig. 1-2.

Step 1. Place the handle mechanism with attached gasket over the enclosure cutout. (For cutout dimensions, refer to Fig. 4-1). Place the handle bracket on the inside as shown in Fig. 1-1, and insert the top 1/4-20 x 7/8" handle mechanism mounting screw and lock washer through the bracket and enclosure, and thread into the handle mechanism for a few turns, but not all the way.

Step 2. Insert the bottom handle mechanism mounting screw and lock washer through the handle bracket and enclosure, and thread into the handle.

Step 3. Securely tighten both mounting screws.

Step 4. Mount door interlock hasp to handle using two #8-32 SEMS screws (see Fig. 1-1) and tighten. Hasp orientation may be modified per customer requirements and enclosures.

Step 5. Attach the spring to the handle bracket and handle as shown in Fig. 1-2 after the threaded rod is installed in Part 3, Step 5.

Step 6. Attach either the long or short door interlock hook onto the panel door's bracket. If door does not have a pre-installed interlock hook bracket, install the interlock bracket provided in the hardware.

Step 7. Cycle handle ON and OFF, and check the door interlock operation. To cycle the mechanism, either close door or defeat door interlock lever.

The flange handle mounting is now complete. Proceed to Part 2 "Assemble operator mechanism onto switch and mount on panel."

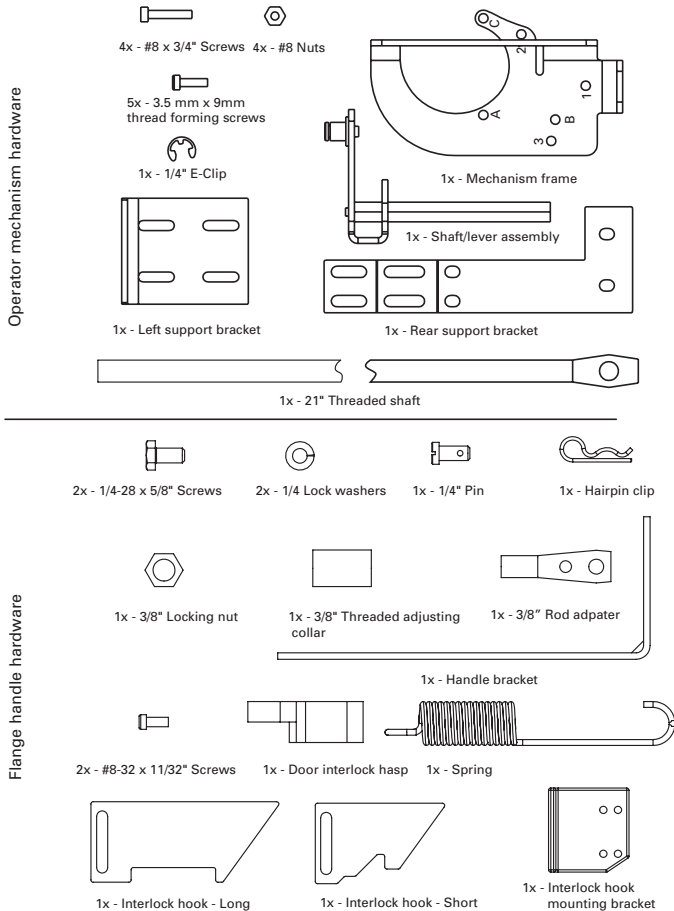


Fig. A Hardware contents

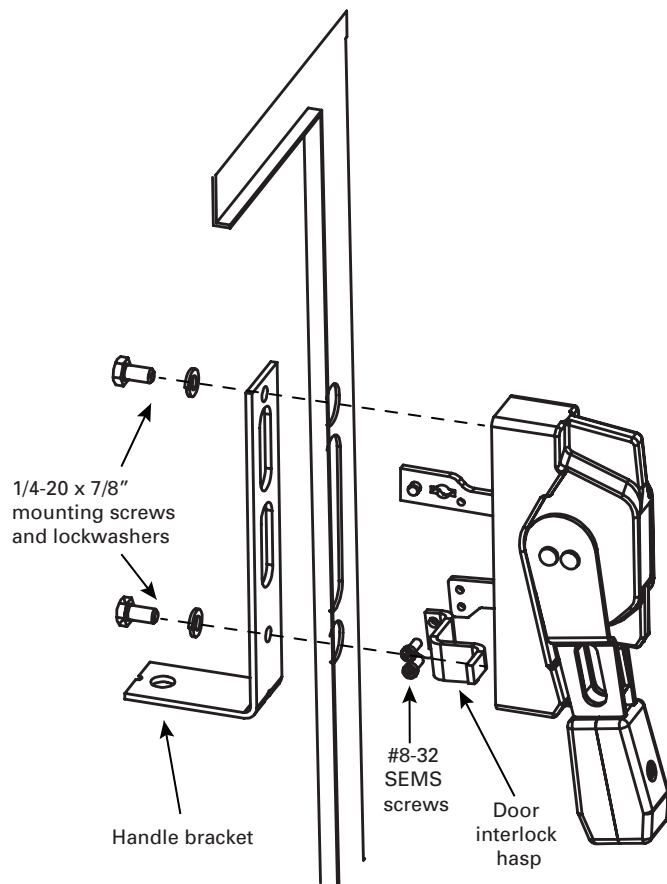


Fig. 1-1. Assemble flange handle onto the enclosure using supplied mounting screws, lock washers and bracket as shown. Then install the door interlock hasp using the supplied screws, as shown. Tighten screws securely.

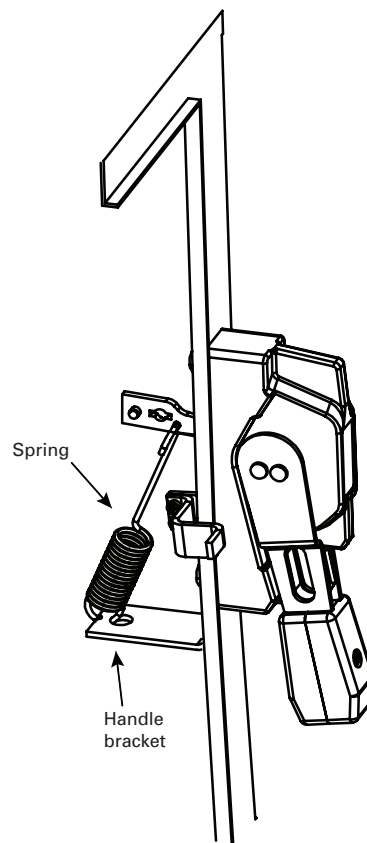


Fig. 1-2. The spring attaches between the handle bracket and handle as shown. Install spring after adjusting threaded rod in Part 3, Step 5.

Installation

Part 2 — Assemble operator mechanism onto switch and mount on panel

Step 1. Test fit the shaft into right side of switch by inserting until fully seated (see Fig. 2-1). If shaft protrudes beyond the left side, mark and trim shaft accordingly with hacksaw. Remove burrs with metal file.

Step 2. Place switch in ON position and insert shaft into the switch's right side until fully seated. Take care to align the shaft's lever so that it points to the lineside openings (see Fig. 2-2).

Step 3. Secure mechanism frame to the switch's right side using three 3.5 mm x 9 mm thread forming phillips head screws placed in holes marked 1, 2 and 3. Torque to 12 lb-in (see Fig. 2-3).

Step 4. Mount back and left side support brackets to mechanism frame:

- Back support bracket to mechanism frame using two #8-32 nuts and two #8-32 x 3/4" screws (see Fig. 2-4) and tighten.
- Left side support bracket to switch left side using the two 3.5 mm x 9 mm thread forming phillips head screws being careful to align the left side support bracket so that it is flush with the back support bracket. Torque to 12 lb-in (see Fig. 2-5)

Step 5. Position switch against the enclosure's back panel so that the threaded rod, when installed, will be horizontal and at a right (90°) angle to the switch lever pin (see Fig. 2-6).

Step 5a. With the switch in position, mark the enclosure's back panel for two holes corresponding to the holes in the left support bracket. Next, drill and tap two #8-32 holes in the enclosure's back panel (see Fig. 2-7).

Step 6. Secure the switch and operator assembly to the enclosure's panel using two #8-32 screws and tighten. Note: Two extra #8-32 nuts are provided should it be desirable to install them on these two #8-32 screws.

The switch/mechanism assembly and installation is now complete. Proceed to Part 3 "Threaded rod installation and adjustment."

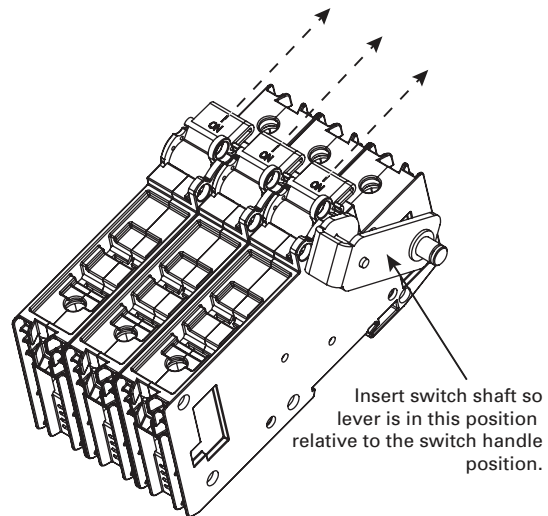


Fig. 2-2. Align shaft lever with switch handle position.

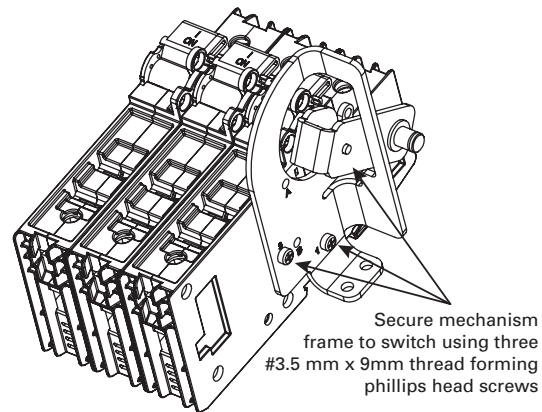


Fig. 2-3. Secure mechanism frame to switch using three 3.5 mm x 9 mm thread forming phillips head screws in holes marked 1, 2 and 3.

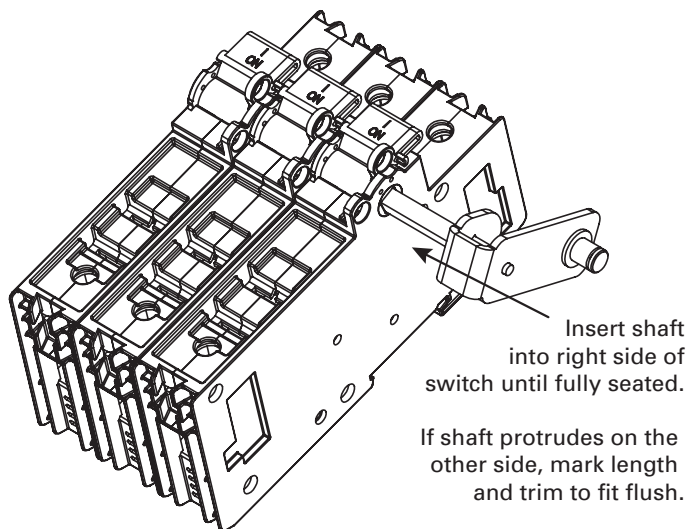


Fig. 2-1. Test fit shaft.

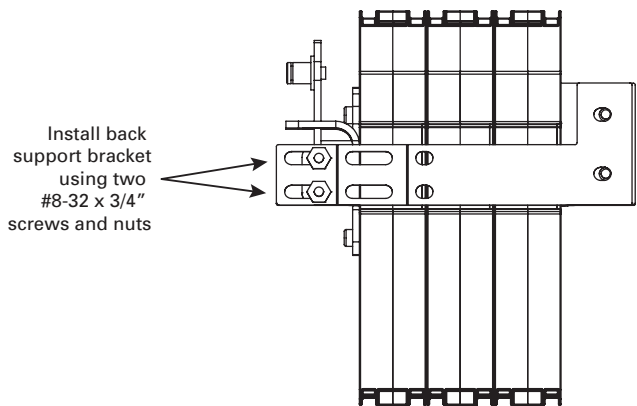


Fig. 2-4. Mount back support bracket to mechanism frame.

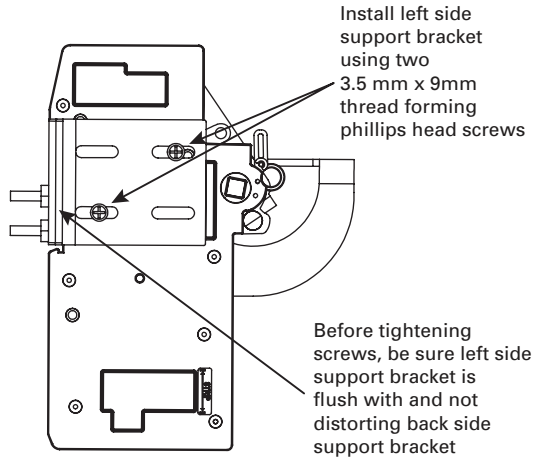


Fig. 2-5. Mount left side support bracket to switch.

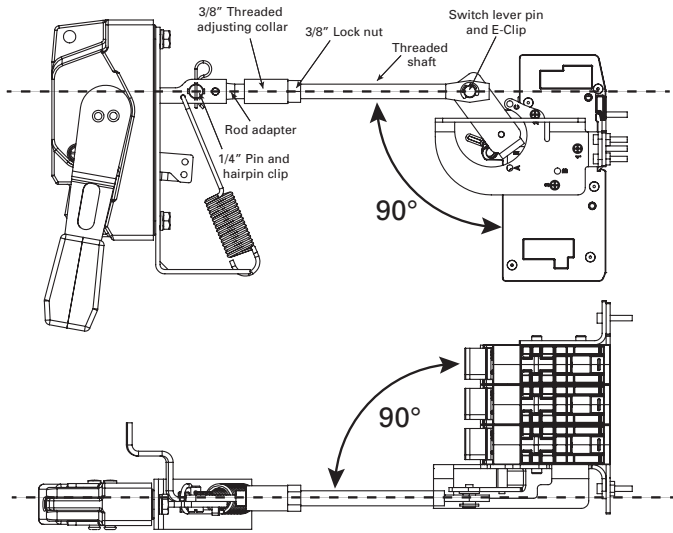


Fig. 2-6. For proper alignment, position switch and operator assembly against panel back wall so that the threaded shaft is at right angles vertically and horizontally.

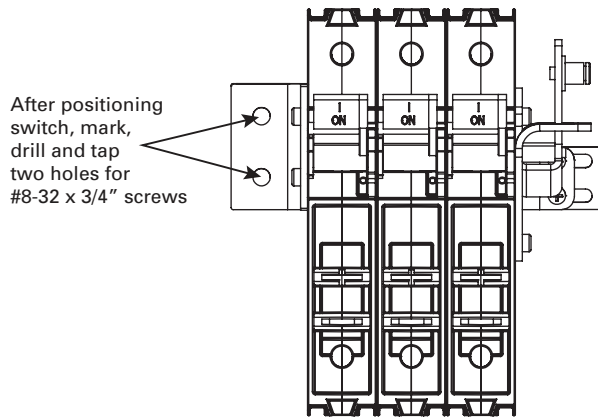


Fig. 2-7. Mark, drill and tap two #8-32 holes and secure switch/mechanism to back panel wall using two #8-32 screws. Install the two extra #8-32 nuts on the back of panel if extra strength is desired.

Installation

Part 3 — Threaded rod installation and adjustment

Step 1. Install rod adapter onto the flange handle toggle and secure using the 1/4" pin and hairpin clip (see Fig. 3-1).

Step 2. Place both the switch and flange handle in the OFF position and test fit the threaded shaft for length (see Fig. 3-2). Note: the threaded shaft length, when cut, needs to be long enough so that the 3/8" threaded adjusting collar will engage both the threaded shaft and rod adapter for a minimum of 3/8" on both ends.

Step 3. Cut threaded shaft to length, file off any burrs. Thread on the 3/8" locking nut and 3/8" threaded adjusting collar. Next thread the adjusting collar onto the rod adapter and adjust the total length so that the threaded rod end will slip onto the switch lever pin (see Fig. 3-2).

Step 4. Test the flange handle's operation by cycling ON and OFF. If operating satisfactorily, proceed to Step 5. If further adjustment is needed, disengage the threaded rod from the switch's lever and lengthen or shorten until proper flange handle operation is obtained, then proceed to Step 5.

Step 5. Secure threaded rod to switch lever pin using the 1/4" E-Clip. Tighten the 3/8" locking nut to prevent the adjusting collar from rotating. Install spring between handle bracket and handle as shown in Fig. 3-2.

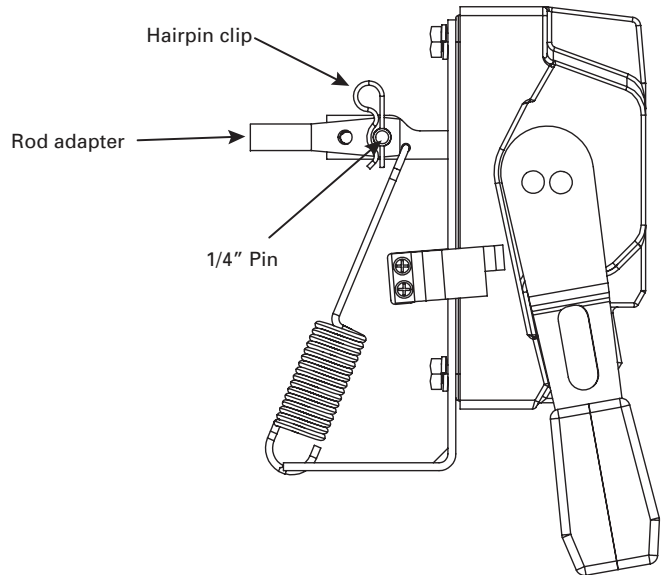


Fig. 3-1. Install rod adapter using 1/4" pin and secure with hairpin clip.

The installation is now complete.

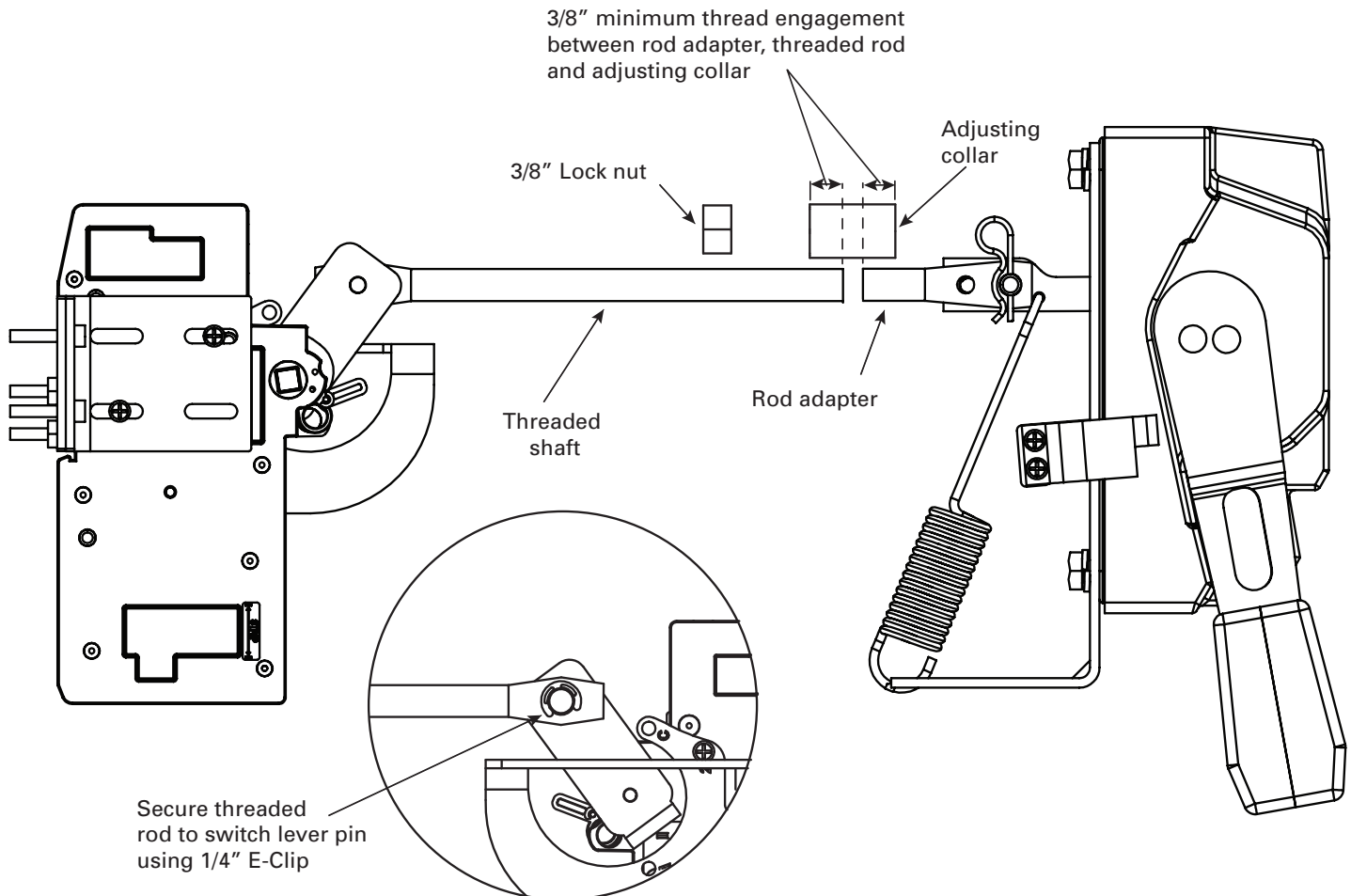
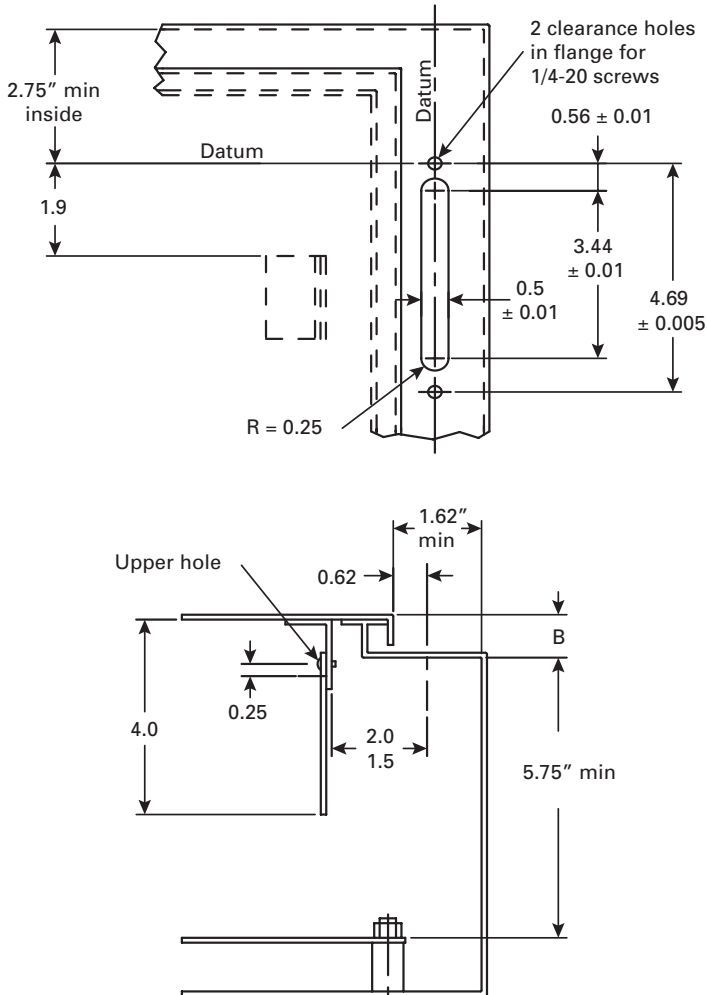


Fig. 3-2. Test fit threaded rod, mark and cut to length. Next install the 3/8" lock nut and adjusting collar.

Installation

Part 4 — Custom flange handle mounting

If an enclosure that does not have provisions for mounting the flange handle, below (see Fig. 4-1) are the dimensions for making the necessary cutouts and mounting the door interlock blade.



The instructions for installation, testing, maintenance, or repair herein are provided for the use of the product in general commercial applications and may not be appropriate for use in nuclear applications.

These instructions are published solely for information purposes and should not be considered all-inclusive. If further information is required, you should consult an authorized Bussmann series sales representative.

The sale of the product shown in this literature is subject to the terms and conditions outlined in appropriate Eaton selling policies or other contractual agreement between the parties. This literature is not intended to and does not enlarge or add to any such contract. The sole source governing the rights and remedies of anyone purchasing this equipment is the contract between the purchaser and the Bussmann division.

NO WARRANTIES, EXPRESSED OR IMPLIED, INCLUDING WARRANTIES OF FITNESS FOR A PARTICULAR PURPOSE OR MERCHANTABILITY, OR WARRANTIES ARISING FROM COURSE OF DEALING OR USAGE OF TRADE, ARE MADE REGARDING THE INFORMATION, RECOMMENDATIONS, AND DESCRIPTIONS CONTAINED HEREIN.

In no event will Eaton be responsible to the purchaser or user in contract, in tort (including negligence), strict liability or otherwise for any special, indirect, incidental or consequential damage or loss whatsoever, including but not limited to damage or loss of use of equipment, plant or power system, cost of capital, loss of power, additional expenses in the use of existing power facilities, or claims against the purchaser or user by its customers resulting from the use of the information, recommendations and description contained herein.

Fig. 4-1. Flange drilling pattern for handle and interlock blade mounting.

