

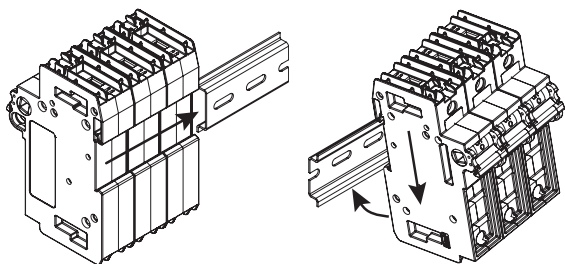
⚠ DANGER



HAZARD OF ELECTRIC SHOCK, EXPLOSION OR ARC FLASH

MAY RESULT IN DEATH OR SERIOUS INJURY

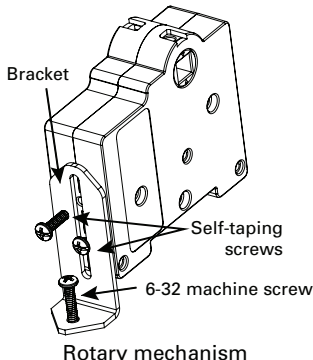
Working on or near energized circuits poses a serious risk of electric shock. De-energize all circuits before installing or servicing this equipment and follow all prescribed safety procedures.



Applies to all 1-, 2- and 3-pole versions. To mount, slide unit onto 35 mm DIN-Rail from end as shown, or hook top retaining lug onto rail, push down to compress tension spring and slip lower retaining lug onto the DIN-Rail and release as shown.

Note: Rotary operated switches require installing the support bracket.

- Step 1.** Attach the support bracket to the bottom of the rotary mechanism using two #1 phillips head screws until hand tight.
- Step 2.** Proceed with mounting the switch to the DIN rail as shown above.
- Step 3.** Locate hole for bracket screw to panel hole, drill and tap for a 6-32 machine screw. Install screw and tighten.
- Step 4.** Torque the two phillips head screws holding the support bracket to the switch to 9 lb-in.

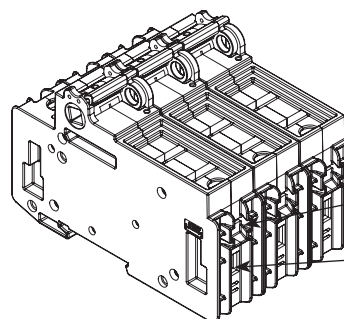


Note: These instructions cover the following catalog numbers:
 CCP2-(pole)-(30/60/100)CF
 CCP2R-(pole)-(30/60/100)CF
 CCP2RL-(pole)-(30/60/100)CF
 CCP2S-(pole)-(30/60/100)CF
 CCP2SL-(pole)-(30/60/100)CF
 CCD2-3-(30/60/100)
 CCD2R-3-(30/60/100)
 CCD2RL-3-(30/60/100)
 CCD2S-3-(30/60/100)
 CCD2SL-3-(30/60/100)

Requires customer supplied 35 mm DIN-Rail.

If the switch is being installed with either a flange-cable or flange-rod operator, follow the instructions that come with those products.

BUSSMANN SERIES



For connecting conductors directly to switch, use only 75°C Cu, solid or stranded*. When inserting dual wires into the box lug terminal, use same gauge and type.

Fork lug terminal with a 4.3 mm gap for a #8-32 stud, 30 A max, insulated flange, wire size 12-10 AWG

Box lug terminal

* See table below for conductor details.

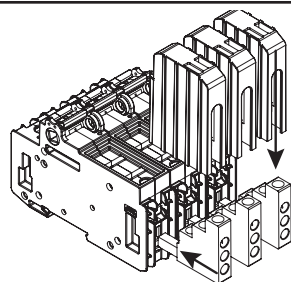
| Wire type | AWG range | Class | Quantity | Torque N·m (lb-in) |
|-----------------------------|-----------|---------------------------------|-------------|--------------------|
| 30 and 60 A switches | | | | |
| 75°C Cu | 4-6 | Stranded, Class B to K | Single | 3.95 (35) |
| | 8-18 | | | 2.26 (20) |
| | | | | 3.39 (30) |
| | 6-8 | Stranded, Class B/C | Dual | 2.26 (20) |
| | | Stranded, Class K | | 2.26 (20) |
| | 10-18 | Stranded, Class B to K | Single/dual | 2.26 (20) |
| | 10-18 | Solid | | 2.26 (20) |
| | 4-18 | Stranded, UL ferrule, Class B/C | Single | 3.39 (30) |
| | 6-18 | | | Twin† |
| | 4-18 | Stranded, UL ferrule, Class K | Single | 2.82 (25) |
| 6-18 | Twin† | | | |
| 100 A switches | | | | |
| 75°C Cu | 12-18 | Stranded, Class B/C | Single | 2.26 (20) |
| | 10 | | | 2.82 (25) |
| | 8 | | | 4.52 (40) |
| | 4-6 | | | 5.08 (45) |
| | 1-3 | Dual | Dual | 6.21 (55) |
| | 4-12 | | | 5.08 (45) |
| | 12-18 | Stranded, UL ferrule, Class B/C | Single | 2.26 (20) |
| | 10 | | | 3.95 (35) |
| | 1-8 | | | 4.52 (40) |
| | 10-18 | Solid | Single/Dual | 2.26 (20) |
| | 6-9 | | | 2.82 (25) |
| | 10-18 | Class K | Single | 2.26 (20) |
| | 8-18 | | | 2.26 (20) |
| | 1-7 | Dual | Dual | 3.39 (30) |
| | 3-10 | | | 5.08 (45) |
| | 8-18 | Class K, UL ferrule | Single | 2.26 (20) |
| | 1-7 | | | 3.39 (30) |
| | 6-18 | Twin | Twin | 2.26 (20) |
| | | | | 2.26 (20) |

† Two stranded conductors placed in one UL Listed twin ferrule.

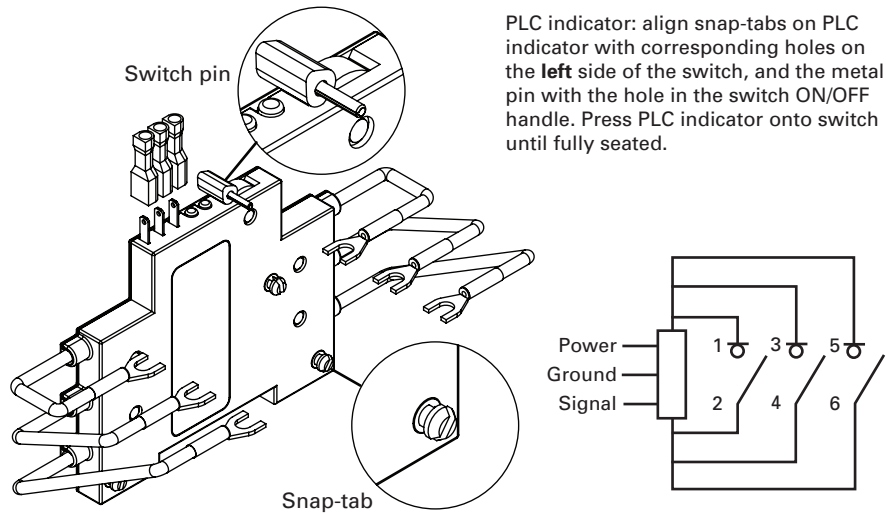
Available Bussmann series fuses

| UL fuse class | Type/description | Volts | Data sheet no. |
|---------------|--|-----------------|----------------|
| CF | Indicating time-delay, Low-Peak™ CUBEFuse (6-100 A) | 600 Vac/300 Vdc | 9000 |
| | Non-indicating time-delay, Low-Peak CUBEFuse (1-100 A) | | |
| | Non-indicating fast-acting CUBEFuse (1-100 A) | | |

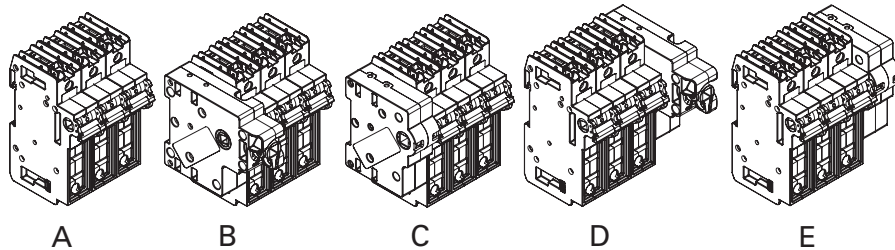
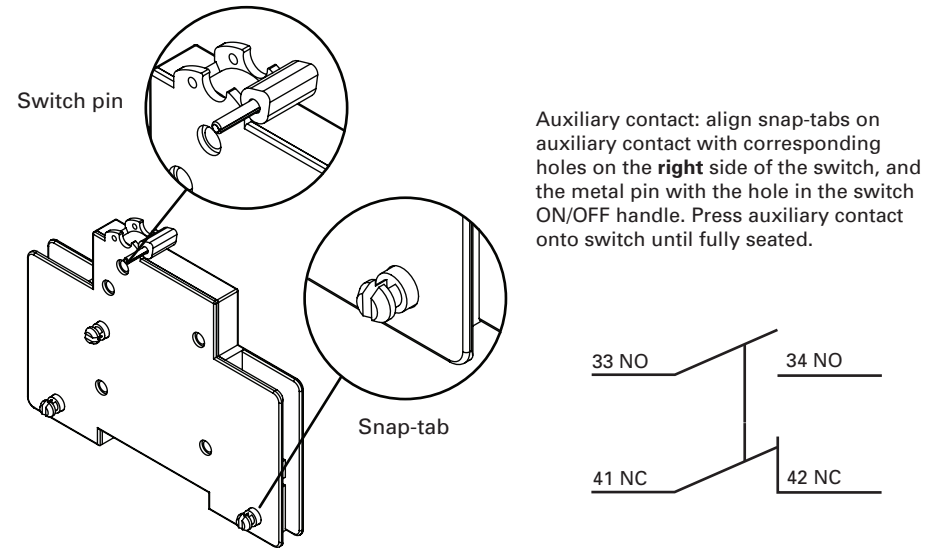
Multi-port terminals can be installed on either the lineside or loadside of switch. For connecting multi-port lug terminals to switch, follow instructions supplied with the lug kit. Each kit comes with three (3) multi-port lugs and three (3) terminal shrouds. Installing multi-port lugs prohibits using the fork terminal and installing the PLC fuse monitor accessory. **Note:** lug kit CCP2-MW1-3 can only be mounted on a 30 or 60 A switch, lug kit CCP2-MW1-6 can only be mounted on a 100 A switch.



Note: The PLC indicator accessory can only be installed on the left side of the switch. It cannot be installed if the switch has a multi-lug terminal kit in place, or has a left front or left side rotary mechanism. For details, follow instructions that come with the PLC indicator, or the selector/pistol handle instructions for rotary operation. PLC indicator CCP2-PLC-IND only fits 30 and 60 A switches, PLC indicator CCP2-PLC-100 only fits 100 A switches.



Note: The auxiliary contact accessory can only be installed on the right side of the switch. It cannot be installed if the switch has a right front or right side rotary mechanism. For details, follow instructions that come with the auxiliary contact, or the selector/pistol handle instructions for rotary operation. Auxiliary contact CCP2-AUX only fits 30 and 60 A switches, auxiliary contact CCP2-AUX-100 only fits 100 A switches.

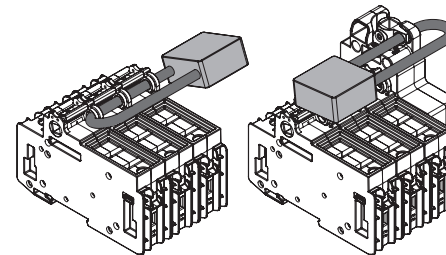


This table pertains to the CCP2-(pole)-(30/60/100)CF and CCD2-3-(30/60/100) that have the rotary operating mechanisms* shown above. Rotary mechanisms are only available for 2- and 3-pole switches. 1-pole switches are not available with rotary mechanisms.

| Letter code | Description |
|-------------|---|
| A | Switch without rotary mechanism. Accepts PLC indicator and auxiliary contact accessories |
| B | Switch with left front rotary mechanism. Accepts only auxiliary contact accessory on right side |
| C | Switch with left side rotary mechanism. Accepts only auxiliary contact accessory on right side |
| D | Switch with right front rotary mechanism. Accepts only PLC indicator accessory on left side |
| E | Switch with right side rotary mechanism. Accepts only PLC indicator accessory on left side |

* Rotary mechanisms are factory installed and must be ordered using the specific catalog number for the desired switch.

Switch locking feature: place switch in OFF position for lockout/tagout

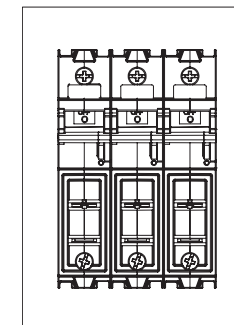


Switch and front rotary operated versions all use a 1/4" lock. Lockout for side rotary versions must be made using the lockout provision on the handle.

Fuse installation

- Switch **MUST BE** in the OFF position to install or remove fuse
- 30 A fused switches accept any CUBEFuse up to 30 A
- 60 A fused switches accept any CUBEFuse up to 60 A
- 100 A fused switches accept any CUBEFuse up to 100 A

Switch will not accept any CUBEFuse with an amp rating higher than the switch.



Minimum enclosure size:

- 30/60 A switch only, 10" x 8" x 6" (254x203x152 mm)
- 100 A switch only, 14" x 12" x 6" (356x305x152 mm)

Minimum spacing: 2" (51 mm) over surface, 1" (25 mm) through air.

