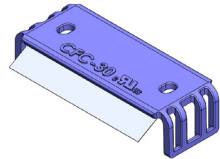
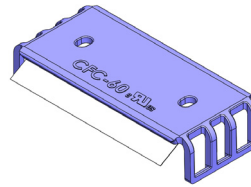


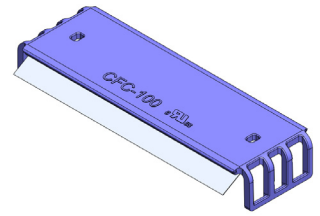
CFC-30, CFC-60 and CFC-100 CUBEFuse covers



CFC-30: 30 A case size



CFC-60: 60 A case size



CFC-100: 100 A case size



These covers are for installation on indicating versions of the Bussmann™ series CUBEFuse™ (catalog symbol "TCF_").

Installing these covers will not interfere with:

- The fuse test points
- Using the CUBEFuse pullers (CFP-30, CFP-60 and CFP-100)

These installation instructions apply equally to all Bussmann series CUBEFuse cover catalog numbers listed in this table.

CUBEFuse cover catalog number	Fit CUBEFuse amp range
CFC-30	up to 30
CFC-60	35 to 60
CFC-100	70 to 100

	 WARNING
	<p>HAZARD OF ELECTRIC SHOCK, EXPLOSION OR ARC FLASH</p> <p>MAY RESULT IN DEATH OR SERIOUS INJURY</p> <p>Working on or near energized circuits poses a serious risk of electric shock. De-energize all circuits before installing or servicing this equipment and follow all prescribed safety procedures.</p>

Qualified person

For the purpose of this instruction manual, a qualified person:

- (a) is familiar with the subject equipment and the hazards involved with their application, use, administration and maintenance.
- (b) is trained and authorized to de-energize, clear, ground, and tag circuits and equipment in accordance with established safety practices.
- (c) is trained in the proper care and use of personal protective equipment such as rubber gloves, hard hat, safety glasses or face shields, arc-flash clothing, etc., in accordance with established safety practices.
- (d) is trained to render first aid.
- (e) has received safety training to recognize and avoid the hazards involved.
- (f) has the skills and knowledge pertaining to the construction and operation of this equipment and its installation.

IMPORTANT: These procedures do not claim to cover all possible details or variations encountered with the installation of these covers, nor do they provide for all possible conditions that may be encountered. If further information is desired or needed to address any particular issue not covered in this document, contact your Bussmann series product representative. The information in this document does not relieve the user from exercising good judgment, nor from using sound safety practices.

Note: Because Eaton has a policy of continuous product improvement, we reserve the right to change design specifications without notice. Should a conflict arise between the general information in this document and the contents of drawings or supplementary material, or both, the latter shall take precedence. For the latest version of this instruction manual, download Publication No. 3A3719 from Eaton.com/bussmannseries.

Safety concerns

This installation manual is not comprehensive. It is assumed the installer will follow established safety procedures for working in an electrical environment. For more information on safety precautions and procedures, consult the following websites:

- National Fire Protection Association (NFPA) www.nfpa.org
- Underwriters Laboratories (UL) www.ul.com
- National Electrical Mfgs. Association (NEMA) www.nema.org
- American National Standards Association (ANSI) www.ansi.org
- Institute of Electrical and Electronics Engineers (IEEE) www.ieee.org

Eaton
 1000 Eaton Boulevard
 Cleveland, OH 44122
 Eaton.com

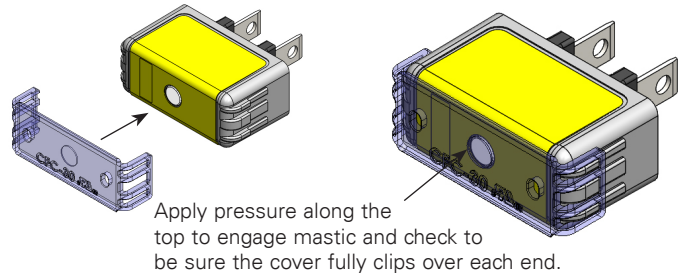
Bussmann Division
 114 Old State Road
 Ellisville, MO 63021
 United States
 Eaton.com/bussmannseries

© 2018 Eaton
 All Rights Reserved
 Printed in USA
 Publication No. 3A3719
 February 2018



Cover installation

- Step 1.** De-energize and lockout the circuit/equipment following established safety procedures.
- Step 2.** Remove indicating CUBEFuse units.
NOTE: if removing the CUBEFuse from a switch, the switch **MUST** be in the OFF position.
- Step 3.** Select a cover appropriate for the CUBEFuse case size (see table on page 1).
- Step 4.** Remove mastic backing from the cover and slip cover over the CUBEFuse until fully seated and snaps into place as shown.



- Step 5.** Apply pressure along the top to fully engage the cover's mastic with the CUBEFuse.
- Step 6.** Reinsert the CUBEFuse back into the holder/switch until fully seated.
NOTE: switch **MUST** be in the OFF position for CUBEFuse to be inserted.
- Step 7.** Perform steps 1 to 6 above for all CUBEFuse units.
- Step 8.** Once all preceding steps are performed, reenergize the circuit/equipment following established safety procedures.

If you should have any questions about these instructions, contact Applications Engineering M-F 7:00 a.m. to 5:00 p.m. Central time by calling toll-free 855-287-7626 or by emailing FuseTech@Eaton.com

Eaton, Bussmann and CUBEFuse are valuable trademarks of Eaton in the U.S. and other countries. You are not permitted to use the Eaton trademarks without prior written consent of Eaton.