

xPole Home

the new dedicated residential range

Save time selecting the best protection for your residential projects with our new range.



EATON

Powering Business Worldwide

xPole Home

the new dedicated residential range



Save time selecting the best protection for your residential projects with our new range.



Dedicated residential range



Always on stock at your Electrical Wholesaler



Optimised portfolio



Highest reliability and safety



Easier to select

Approximately **100 million households** equipped with Eaton miniature circuit breakers worldwide.

MCB



- 4.5 OR 6 kA
- 1, 1N, 2, 3, 3N poles
- B&C curves
- 6-40 A
(50, 63 A on Request)

RCCB



- 6 kA
- 30 mA
- 2, 4 poles
- AC&A types
- 25, 40, 63 A

RCBO



- 6 kA
- 30 mA
- 1N pole
- B&C curves
- AC&A types
- 6, 10, 13, 16, 20, 25 A



The new xPole Home series is tailored to meet the demands of residential applications. xPole Home combines the highest degree of safety with design efficiency and spans the entire MCB, RCCB and RCBO residential circuit breaker range. The series is characterized by its streamlined design, its reliability and full compliance with applicable standards. Furthermore, devices belonging to the xPole Home series are both easy to source and install. As domestic appliances, xPole Home circuit breakers are immediately recognizable

by means of a grey house symbol, which is featured on each product belonging to the new range. Their streamlined design, made in Europe, ensures that the devices blend into the background without impacting on a residence's aesthetics. All xPole Home circuit breakers come with a wide range of tried and proven features that further increase both operational safety and ease of handling. The xPole Home series is fully compatible with all corresponding EATON accessories designed for residential applications.



MCB				RCCB				RCBO			
4.5 kA		6 kA		4.5 kA		6 kA		4.5 kA		6 kA	
CURRENT	NEW	CURRENT	NEW	CURRENT	NEW	CURRENT	NEW	CURRENT	NEW	CURRENT	NEW
xClear (CLS4)	xPole Home (HL)	xClear (CLS6)	xPole Home (HN)	xPole (PF4)	xPole Home (HNC)*	xClear (CFI6)	xPole Home (HNC)	xClear (CKN4)	xPole Home (HNB)*	xClear (CKN6)	xPole Home (HNB)
xPole (PL4)		xPole (PL6)**	no change			xPole (PF6)**	no change	xPole (PFL4)		xPole (PFL6)**	no change

* Only 6kA product is available

** alternative for residential and (light) commercial use

xPole Home cross reference list to the discontinued xClear range.

MCB								
Current rating	B Characteristic				C Characteristic			
	Phasing out		Replacements		Phasing out		Replacements	
	CSL6		HN		CSL6		HN	
	Name	Number	Name	Number	Name	Number	Name	Number
6A	CLS6-B6/1N-DP	270439	HN-B6/1N	194838	CLS6-C6/1N-DP	270451	HN-C6/1N	194848
	CLS6-B6/2-DP	270371	HN-B6/2	194858	CLS6-C6/2-DP	270383	HN-C6/2	194868
	CLS6-B6/3-DP	270405	HN-B6/3	194878	CLS6-C6/3-DP	270417	HN-C6/3	194888
	CLS6-B6/3N-DP	270473	HN-B6/3N	194898	CLS6-C6/3N-DP	270485	HN-C6/3N	194908
	CLS6-B6-DP	269607	HN-B6/1	194818	CLS6-C6-DP	270349	HN-C6/1	194848
10A	CLS6-B10/1N-DP	270440	HN-B10/1N	194839	CLS6-C10/1N-DP	270452	HN-C10/1N	194849
	CLS6-B10/2-DP	270372	HN-B10/2	194859	CLS6-C10/2-DP	270384	HN-C10/2	194869
	CLS6-B10/3-DP	270406	HN-B10/3	194879	CLS6-C10/3-DP	270418	HN-C10/3	194889
	CLS6-B10/3N-DP	270474	HN-B10/3N	194899	CLS6-C10/3N-DP	270486	HN-C10/3N	194909
	CLS6-B10-DP	269608	HN-B10/1	194819	CLS6-C10-DP	270350	HN-C10/1	194829
13A	CLS6-B13/1N-DP	270441	HN-B13/1N	194840	CLS6-C13/1N-DP	270453	HN-C13/1N	194850
	CLS6-B13/2-DP	270373	HN-B13/2	194860	CLS6-C13/2-DP	270385	HN-C13/2	194870
	CLS6-B13/3-DP	270407	HN-B13/3	194880	CLS6-C13/3-DP	270419	HN-C13/3	194890
	CLS6-B13/3N-DP	270475	HN-B13/3N	194900	CLS6-C13/3N-DP	270487	HN-C13/3N	194910
	CLS6-B13-DP	269609	HN-B13/1	194820	CLS6-C13-DP	270351	HN-C13/1	194830
16A	CLS6-B16/1N-DP	270442	HN-B16/1N	194841	CLS6-C16/1N-DP	270454	HN-C16/1N	194851
	CLS6-B16/2-DP	270374	HN-B16/2	194861	CLS6-C16/2-DP	270386	HN-C16/2	194871
	CLS6-B16/3-DP	270408	HN-B16/3	194881	CLS6-C16/3-DP	270420	HN-C16/3	194891
	CLS6-B16/3N-DP	270476	HN-B16/3N	194901	CLS6-C16/3N-DP	270488	HN-C16/3N	194911
	CLS6-B16-DP	270340	HN-B16/1	194821	CLS6-C16-DP	270352	HN-C16/1	194831
20A	CLS6-B20/1N-DP	270443	HN-B20/1N	194842	CLS6-C20/1N-DP	270455	HN-C20/1N	194852
	CLS6-B20/2-DP	270375	HN-B20/2	194862	CLS6-C20/2-DP	270387	HN-C20/2	194872
	CLS6-B20/3-DP	270409	HN-B20/3	194882	CLS6-C20/3-DP	270421	HN-C20/3	194892
	CLS6-B20/3N-DP	270477	HN-B20/3N	194902	CLS6-C20/3N-DP	270489	HN-C20/3N	194912
	CLS6-B20-DP	270341	HN-B20/1	194822	CLS6-C20-DP	270353	HN-C20/1	194832
25A	CLS6-B25/1N-DP	270444	HN-B25/1N	194843	CLS6-C25/1N-DP	270456	HN-C25/1N	194853
	CLS6-B25/2-DP	270376	HN-B25/2	194863	CLS6-C25/2-DP	270388	HN-C25/2	194873
	CLS6-B25/3-DP	270410	HN-B25/3	194883	CLS6-C25/3-DP	270422	HN-C25/3	194893
	CLS6-B25/3N-DP	270478	HN-B25/3N	194903	CLS6-C25/3N-DP	270490	HN-C25/3N	194913
	CLS6-B25-DP	270342	HN-B25/1	194823	CLS6-C25-DP	270354	HN-C25/1	194833
32A	CLS6-B32/1N-DP	270445	HN-B32/1N	194844	CLS6-C32/1N-DP	270457	HN-C32/1N	194854
	CLS6-B32/2-DP	270377	HN-B32/2	194864	CLS6-C32/2-DP	270389	HN-C32/2	194874
	CLS6-B32/3-DP	270411	HN-B32/3	194884	CLS6-C32/3-DP	270423	HN-C32/3	194894
	CLS6-B32/3N-DP	270479	HN-B32/3N	194904	CLS6-C32/3N-DP	270491	HN-C32/3N	194914
	CLS6-B32-DP	270343	HN-B32/1	194824	CLS6-C32-DP	270355	HN-C32/1	194834
40A	CLS6-B40/1N-DP	270446	HN-B40/1N	194845	CLS6-C40/1N-DP	270458	HN-C40/1N	194855
	CLS6-B40/2-DP	270378	HN-B40/2	194865	CLS6-C40/2-DP	270390	HN-C40/2	194875
	CLS6-B40/3-DP	270412	HN-B40/3	194885	CLS6-C40/3-DP	270424	HN-C40/3	194895
	CLS6-B40/3N-DP	270480	HN-B40/3N	194905	CLS6-C40/3N-DP	270492	HN-C40/3N	194915
	CLS6-B40-DP	270344	HN-B40/1	194825	CLS6-C40-DP	270356	HN-C40/1	194835
50A	CLS6-B50/1N-DP	270447	HN-B50/1N	194846	CLS6-C50/1N-DP	270459	HN-C50/1N	194856
	CLS6-B50/2-DP	270379	HN-B50/2	194866	CLS6-C50/2-DP	270391	HN-C50/2	194876
	CLS6-B50/3-DP	270413	HN-B50/3	194886	CLS6-C50/3-DP	270425	HN-C50/3	194896
	CLS6-B50/3N-DP	270481	HN-B50/3N	194906	CLS6-C50/3N-DP	270493	HN-C50/3N	194916
	CLS6-B50-DP	270345	HN-B50/1	194826	CLS6-C50-DP	270357	HN-C50/1	194836
63A	CLS6-B63/1N-DP	270448	HN-B63/1N	194847	CLS6-C63/1N-DP	270460	HN-C63/1N	194857
	CLS6-B63/2-DP	270380	HN-B63/2	194867	CLS6-C63/2-DP	270392	HN-C63/2	194877
	CLS6-B63/3-DP	270414	HN-B63/3	194887	CLS6-C63/3-DP	270426	HN-C63/3	194897
	CLS6-B63/3N-DP	270482	HN-B63/3N	194907	CLS6-C63/3N-DP	270494	HN-C63/3N	194917
	CLS6-B63-DP	270346	HN-B63/1	194827	CLS6-C63-DP	270358	HN-C63/1	194837

RCCB

Phasing out		Replacements	
CFI6		HNC	
Name	Number	Name	Number
CFI6-25/2/003-DE	235753	HNC-25/2/003	194690
CFI6-40/2/003-DE	235760	HNC-40/2/003	194691
CFI6-63/2/003-DE	235768	HNC-63/2/003	194692
CFI6-25/2/003-A-DE	235757	HNC-25/2/003-A	194684
CFI6-40/2/003-A-DE	235764	HNC-40/2/003-A	194685
CFI6-63/2/003-A-DE	235772	HNC-63/2/003-A	194686
CFI6-25/4/003-DE	235776	HNC-25/4/003	194693
CFI6-40/4/003-DE	235784	HNC-40/4/003	194694
CFI6-63/4/003-DE	235792	HNC-63/4/003	194695
CFI6-25/4/003-A-DE	235780	HNC-25/4/003-A	194687
CFI6-40/4/003-A-DE	235788	HNC-40/4/003-A	194688
CFI6-63/4/003-A-DE	235796	HNC-63/4/003-A	194689



MCB

RCBO

Phasing out		Replacements	
CKN6		HNB	
Name	Number	Name	Number
CKN6-16/1N/B/003-DE	241114	HNB-B16/1N/003	195121
CKN6-16/1N/B/003-A-DE	241294	HNB-B16/1N/003-A	195133
CKN6-16/1N/C/003-DE	241174	HNB-C16/1N/003	195127
CKN6-10/1N/B/003-DE	241094	HNB-B10/1N/003	195119
CKN6-16/1N/C/003-A-DE	241354	HNB-C16/1N/003-A	195139
CKN6-10/1N/C/003-DE	241154	HNB-C10/1N/003	195125
CKN6-20/1N/B/003-DE	241429	HNB-B20/1N/003	195122
CKN6-6/1N/B/003-DE	241084	HNB-B6/1N/003	195118
CKN6-25/1N/B/003-DE	241453	HNB-B25/1N/003	195123
CKN6-20/1N/C/003-DE	241425	HNB-C20/1N/003	195128
CKN6-10/1N/C/003-A-DE	241334	HNB-C10/1N/003-A	195137
CKN6-10/1N/B/003-A-DE	241274	HNB-B10/1N/003-A	195131
CKN6-25/1N/C/003-DE	241449	HNB-C25/1N/003	195129
CKN6-6/1N/C/003-A-DE	241324	HNB-C6/1N/003-A	195136
CKN6-6/1N/C/003-DE	241144	HNB-C6/1N/003	195124
CKN6-25/1N/B/003-A-DE	241549	HNB-B25/1N/003-A	195135
CKN6-13/1N/B/003-DE	241104	HNB-B13/1N/003	195120
CKN6-6/1N/B/003-A-DE	241264	HNB-B6/1N/003-A	195130
CKN6-13/1N/C/003-DE	241164	HNB-C13/1N/003	195126
CKN6-20/1N/B/003-A-DE	241525	HNB-B20/1N/003-A	195134
CKN6-20/1N/C/003-A-DE	241521	HNB-C20/1N/003-A	195140
CKN6-25/1N/C/003-A-DE	241545	HNB-C25/1N/003-A	195141
CKN6-13/1N/C/003-A-DE	241344	HNB-C13/1N/003-A	195138
CKN6-13/1N/B/003-A-DE	241284	HNB-B13/1N/003-A	195132



RCCB



RCBO

From residential to (light) commercial applications

xPole Home
Residential

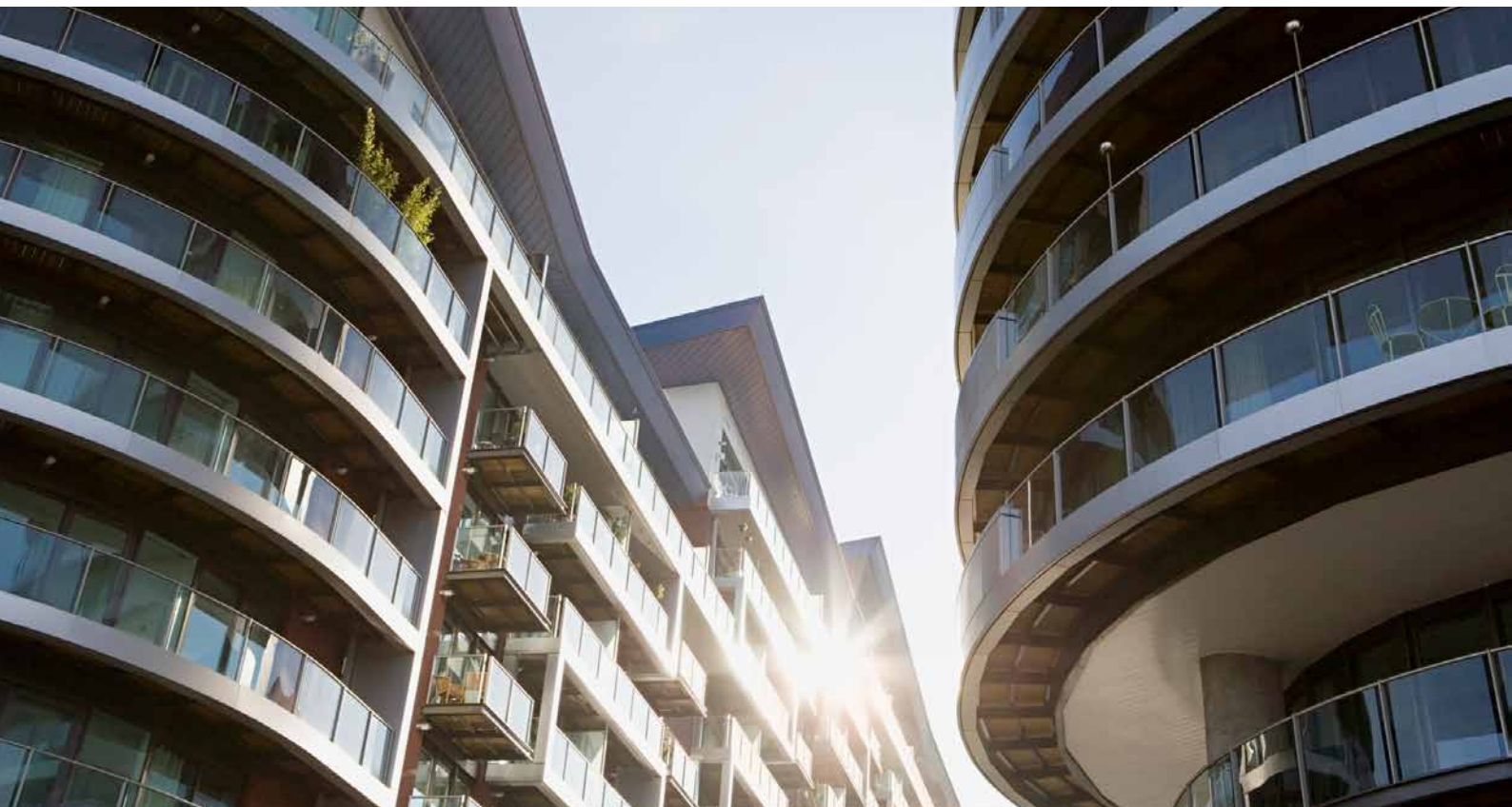


xPole
(Light) commercial

RCCB		
	xPole Home	xPole
Shortcut		
	HNC	PF6
kA		
	6	6
Poles		
2	✓	✓
4	✓	✓
Amps		
16	25-63 Amp	16-80 Amp
mAmps		
30	✓	✓
300		✓
100		✓
500		✓
Types		
	A, AC	A, AC, G, G/A, S, S/A

MCB		
	xPole Home	xPole
Shortcut		
	HL or HN	PL6
kA		
	4,5 or 6	6
Poles		
1	✓	✓
1N	✓	✓
2	✓	✓
3	✓	✓
3N	✓	✓
4		✓
Curves		
B	✓	✓
C	✓	✓
D		✓
Amps		
	6-63 Amp	0,16-63 Amp

RCBO		
	xPole Home	xPole
Shortcut		
	HNB	PFL6
kA		
	6	6
Poles		
1N	✓	✓
Curve		
B	✓	✓
C	✓	✓
Amps		
	6-25 Amp	6-40 Amp
mAmps		
30	✓	✓
300		✓
Types		
	A, AC	A, AC, G



Electrically-ignited fires are a hidden but significant threat only recently beginning to be addressed.

Arc faults, which occur out of sight within installations, have the potential to ignite fires and cause enormous damage. Statistics show that the source of over 25% of fires is an electrical system.



The next step in the evolution of protection

The EATON AFDD+ is not simply a development of devices that already exist. It is the next step in the evolution of protection devices, incorporating the benefits of digitalization.

A complete range of devices, that offer protection for people, property and assets including the next step in protection - prevention against electrically ignited fires caused by serial and parallel arcs.



				AFDD+	PROTECTION ↑
			RCBO	Arc fault protection	
MCB	RCCB		Earth fault current protection	Earth fault current protection	
Short circuit & overcurrent protection	Earth fault current protection		Short circuit & overcurrent protection	Short circuit & overcurrent protection	
FUNCTIONALITY →					
Basic fire protection	🔥 Basic fire protection	🔥 Increased fire protection	🔥 Enhanced fire protection	🔥 Enhanced fire protection	
-	⚡ Shock prevention	⚡ Shock prevention	⚡ Shock prevention	⚡ Shock prevention	

At Eaton, we're energized by the challenge of powering a world that demands more. With over 100 years experience in electrical power management, we have the expertise to see beyond today. From groundbreaking products to turnkey design and engineering services, critical industries around the globe count on Eaton.

We power businesses with reliable, efficient and safe electrical power management solutions. Combined with our personal service, support and bold thinking, we are answering tomorrow's needs today. Follow the charge with Eaton. Visit eaton.eu.

To find out more about how to protect what matters, visit www.eaton.com/xpolehome

Changes to the products, to the information contained in this document, and to prices are reserved; so are errors and omissions. Only order confirmations and technical documentation by Eaton is binding. Photos and pictures also do not warrant a specific layout or functionality. Their use in whatever form is subject to prior approval by Eaton. The same applies to Trademarks (especially Eaton, Moeller, and Cutler-Hammer). The Terms and Conditions of Eaton apply, as referenced on Eaton Internet pages and Eaton order confirmations.

Eaton
EMEA Headquarters
Route de la Longeraie 7
1110 Morges, Switzerland

© 2018 Eaton
All Rights Reserved
Publication No. BR003019EN
December 2018

Eaton is a registered trademark.

All other trademarks are property of their respective owners.

Follow us on social media to get the latest product and support information.

