

SG03013



## Description

- High-quality residual current device / miniature circuit breaker combination, line voltage-independent
- Increased protection in applications with 1-phase frequency converter due to the detection of mixed frequencies (type F)
- Reduction of nuisance tripping (type F, G, or G/A) thanks to
  - time delayed tripping
  - increased current withstand capability >3 kA
- Higher load rating with DC residual currents up to 10 mA (type F)
- Contact position indicator red - green
- Fault current tripping indicator
- Guide for secure terminal connection
- 3-position DIN rail clip, permits removal from existing busbar system
- Comprehensive range of accessories suitable for subsequent installation
- Wide variety of rated tripping currents
- Rated currents up to 40 A
- Tripping characteristics B, C, D
- Rated breaking capacity 10 kA

$I_n/I_{\Delta n}$   
(A)

Type  
Designation

Article No.

Units per  
package

### Type G

**10 kA, 1+N-poles**

**Selective + surge current-proof 3 kA, sensitive to residual pulsating DC, Type F** 

SG63013



#### Characteristic B

13/003	FRBmM-B13/1N/003-F	193479	1/60
16/003	FRBmM-B16/1N/003-F	193480	1/60
20/003	FRBmM-B20/1N/003-F	193481	1/60
25/003	FRBmM-B25/1N/003-F	193488	1/60
32/003	FRBmM-B32/1N/003-F	193489	1/60
40/003	FRBmM-B40/1N/003-F	193490	1/60
13/03	FRBmM-B13/1N/03-F	193494	1/60
16/03	FRBmM-B16/1N/03-F	193495	1/60
20/03	FRBmM-B20/1N/03-F	193496	1/60
25/03	FRBmM-B25/1N/03-F	193503	1/60
32/03	FRBmM-B32/1N/03-F	193504	1/60
40/03	FRBmM-B40/1N/03-F	193505	1/60
13/01	FRBmM-B13/1N/01-F	193509	1/60
16/01	FRBmM-B16/1N/01-F	193510	1/60
20/01	FRBmM-B20/1N/01-F	193514	1/60
25/01	FRBmM-B25/1N/01-F	193521	1/60
32/01	FRBmM-B32/1N/01-F	193522	1/60
40/01	FRBmM-B40/1N/01-F	193523	1/60

SG63013



#### Characteristic C

13/003	FRBmM-C13/1N/003-F	193482	1/60
16/003	FRBmM-C16/1N/003-F	193483	1/60
20/003	FRBmM-C20/1N/003-F	193484	1/60
25/003	FRBmM-C25/1N/003-F	193491	1/60
32/003	FRBmM-C32/1N/003-F	193492	1/60
40/003	FRBmM-C40/1N/003-F	193493	1/60
13/03	FRBmM-C13/1N/03-F	193497	1/60
16/03	FRBmM-C16/1N/03-F	193498	1/60
20/03	FRBmM-C20/1N/03-F	193499	1/60
25/03	FRBmM-C25/1N/03-F	193506	1/60
32/03	FRBmM-C32/1N/03-F	193507	1/60
40/03	FRBmM-C40/1N/03-F	193508	1/60
13/01	FRBmM-C13/1N/01-F	193515	1/60
16/01	FRBmM-C16/1N/01-F	193516	1/60
20/01	FRBmM-C20/1N/01-F	193517	1/60
25/01	FRBmM-C25/1N/01-F	193524	1/60
32/01	FRBmM-C32/1N/01-F	193525	1/60
40/01	FRBmM-C40/1N/01-F	193526	1/60

SG03013



**Characteristic D**

13/003	FRBmM-D13/1N/003-F	193485	1/60
16/003	FRBmM-D16/1N/003-F	193486	1/60
20/003	FRBmM-D20/1N/003-F	193487	1/60
13/03	FRBmM-D13/1N/03-F	193500	1/60
16/03	FRBmM-D16/1N/03-F	193501	1/60
20/03	FRBmM-D20/1N/03-F	193502	1/60
13/01	FRBmM-D13/1N/01-F	193518	1/60
16/01	FRBmM-D16/1N/01-F	193519	1/60
20/01	FRBmM-D20/1N/01-F	193520	1/60

$I_n/I_{\Delta n}$   
(A)Type  
Designation

Article No.

Units per  
package**Type G/A****10 kA, 1+N-poles****Surge current-proof 3 kA, sensitive to residual pulsating DC, Type G/A (ÖVE E 8601)** 

SG03013

**Characteristic B**

$I_n/I_{\Delta n}$ (A)	Type Designation	Article No.	Units per package
13/0.03	FRBmM-B13/1N/003-G/A	170716	1/60
16/0.03	FRBmM-B16/1N/003-G/A	170717	1/60
20/0.03	FRBmM-B20/1N/003-G/A	170528	1/60
25/0.03	FRBmM-B25/1N/003-G/A	170529	1/60
32/0.03	FRBmM-B32/1N/003-G/A	170530	1/60
40/0.03	FRBmM-B40/1N/003-G/A	170531	1/60

SG03013

**Characteristic C**

$I_n/I_{\Delta n}$ (A)	Type Designation	Article No.	Units per package
13/0.03	FRBmM-C13/1N/003-G/A	170630	1/60
16/0.03	FRBmM-C16/1N/003-G/A	170631	1/60
20/0.03	FRBmM-C20/1N/003-G/A	170632	1/60
25/0.03	FRBmM-C25/1N/003-G/A	170633	1/60
32/0.03	FRBmM-C32/1N/003-G/A	170634	1/60
40/0.03	FRBmM-C40/1N/003-G/A	170635	1/60

SG03013

**Characteristic D**

$I_n/I_{\Delta n}$ (A)	Type Designation	Article No.	Units per package
13/0.03	FRBmM-D13/1N/003-G/A	170653	1/60
16/0.03	FRBmM-D16/1N/003-G/A	170654	1/60
20/0.03	FRBmM-D20/1N/003-G/A	170655	1/60

$I_n/I_{\Delta n}$   
(A)

Type  
Designation

Article No. Units per  
package

**Type G**

**10 kA, 1+N-poles**

**Surge current-proof 3 kA, Type G (ÖVE E 8601)** 

SG03013



**Characteristic B**

13/0.03	FRBmM-B13/1N/003-G	170710	1/60
16/0.03	FRBmM-B16/1N/003-G	170711	1/60
20/0.03	FRBmM-B20/1N/003-G	170712	1/60
25/0.03	FRBmM-B25/1N/003-G	170713	1/60
32/0.03	FRBmM-B32/1N/003-G	170714	1/60
40/0.03	FRBmM-B40/1N/003-G	170715	1/60
13/0.3	FRBmM-B13/1N/03-G	170555	1/60
16/0.3	FRBmM-B16/1N/03-G	170556	1/60
20/0.3	FRBmM-B20/1N/03-G	170557	1/60
25/0.3	FRBmM-B25/1N/03-G	170558	1/60
32/0.3	FRBmM-B32/1N/03-G	170559	1/60
40/0.3	FRBmM-B40/1N/03-G	170560	1/60

SG03013



**Characteristic C**

13/0.03	FRBmM-C13/1N/003-G	170624	1/60
16/0.03	FRBmM-C16/1N/003-G	170625	1/60
20/0.03	FRBmM-C20/1N/003-G	170626	1/60
25/0.03	FRBmM-C25/1N/003-G	170627	1/60
32/0.03	FRBmM-C32/1N/003-G	170628	1/60
40/0.03	FRBmM-C40/1N/003-G	170629	1/60
13/0.3	FRBmM-C13/1N/03-G	170581	1/60
16/0.3	FRBmM-C16/1N/03-G	170582	1/60
20/0.3	FRBmM-C20/1N/03-G	170583	1/60
25/0.3	FRBmM-C25/1N/03-G	170584	1/60
32/0.3	FRBmM-C32/1N/03-G	170585	1/60
40/0.3	FRBmM-C40/1N/03-G	170586	1/60

SG03013



**Characteristic D**

13/0.03	FRBmM-D13/1N/003-G	170650	1/60
16/0.03	FRBmM-D16/1N/003-G	170651	1/60
20/0.03	FRBmM-D20/1N/003-G	170652	1/60
13/0.3	FRBmM-D13/1N/03-G	170869	1/60
16/0.3	FRBmM-D16/1N/03-G	170870	1/60
20/0.3	FRBmM-D20/1N/03-G	170871	1/60

$I_n/I_{\Delta n}$ (A)	Type Designation	Article No.	Units per package
---------------------------	---------------------	-------------	----------------------

### Type A

10 kA, 1+N-poles

bedingt surge current-proof 250A, pulsstromsensitiv, Type A 

SG03013



#### Characteristic B

6/0.01	FRBmM-B6/1N/001-A	170975	1/60
10/0.01	FRBmM-B10/1N/001-A	170976	1/60
13/0.01	FRBmM-B13/1N/001-A	170977	1/60
16/0.01	FRBmM-B16/1N/001-A	170978	1/60
6/0.03	FRBmM-B6/1N/003-A	170702	1/60
10/0.03	FRBmM-B10/1N/003-A	170703	1/60
13/0.03	FRBmM-B13/1N/003-A	170704	1/60
16/0.03	FRBmM-B16/1N/003-A	170705	1/60
20/0.03	FRBmM-B20/1N/003-A	170706	1/60
25/0.03	FRBmM-B25/1N/003-A	170707	1/60
32/0.03	FRBmM-B32/1N/003-A	170708	1/60
40/0.03	FRBmM-B40/1N/003-A	170709	1/60
6/0.1	FRBmM-B6/1N/01-A	170664	1/60
10/0.1	FRBmM-B10/1N/01-A	170665	1/60
13/0.1	FRBmM-B13/1N/01-A	170666	1/60
16/0.1	FRBmM-B16/1N/01-A	170667	1/60
20/0.1	FRBmM-B20/1N/01-A	170668	1/60
25/0.1	FRBmM-B25/1N/01-A	170669	1/60
32/0.1	FRBmM-B32/1N/01-A	170670	1/60
40/0.1	FRBmM-B40/1N/01-A	170671	1/60
6/0.3	FRBmM-B6/1N/03-A	170607	1/60
10/0.3	FRBmM-B10/1N/03-A	170608	1/60
13/0.3	FRBmM-B13/1N/03-A	170609	1/60
16/0.3	FRBmM-B16/1N/03-A	170610	1/60
20/0.3	FRBmM-B20/1N/03-A	170611	1/60
25/0.3	FRBmM-B25/1N/03-A	170552	1/60
32/0.3	FRBmM-B32/1N/03-A	170553	1/60
40/0.3	FRBmM-B40/1N/03-A	170554	1/60

SG03013



#### Characteristic C

2/0.01	FRBmM-C2/1N/001-A	170904	1/60
4/0.01	FRBmM-C4/1N/001-A	170905	1/60
6/0.01	FRBmM-C6/1N/001-A	170906	1/60
10/0.01	FRBmM-C10/1N/001-A	170907	1/60
13/0.01	FRBmM-C13/1N/001-A	170908	1/60
16/0.01	FRBmM-C16/1N/001-A	170921	1/60
2/0.03	FRBmM-C2/1N/003-A	170614	1/60
4/0.03	FRBmM-C4/1N/003-A	170615	1/60
6/0.03	FRBmM-C6/1N/003-A	170616	1/60
10/0.03	FRBmM-C10/1N/003-A	170617	1/60
13/0.03	FRBmM-C13/1N/003-A	170618	1/60
16/0.03	FRBmM-C16/1N/003-A	170619	1/60
20/0.03	FRBmM-C20/1N/003-A	170620	1/60
25/0.03	FRBmM-C25/1N/003-A	170621	1/60
32/0.03	FRBmM-C32/1N/003-A	170622	1/60
40/0.03	FRBmM-C40/1N/003-A	170623	1/60
2/0.1	FRBmM-C2/1N/01-A	170682	1/60
4/0.1	FRBmM-C4/1N/01-A	170683	1/60
6/0.1	FRBmM-C6/1N/01-A	170684	1/60
10/0.1	FRBmM-C10/1N/01-A	170685	1/60
13/0.1	FRBmM-C13/1N/01-A	170686	1/60
16/0.1	FRBmM-C16/1N/01-A	170687	1/60
20/0.1	FRBmM-C20/1N/01-A	170688	1/60
25/0.1	FRBmM-C25/1N/01-A	170689	1/60
32/0.1	FRBmM-C32/1N/01-A	170690	1/60
40/0.1	FRBmM-C40/1N/01-A	170691	1/60
2/0.3	FRBmM-C2/1N/03-A	170571	1/60
4/0.3	FRBmM-C4/1N/03-A	170572	1/60
6/0.3	FRBmM-C6/1N/03-A	170573	1/60
10/0.3	FRBmM-C10/1N/03-A	170574	1/60
13/0.3	FRBmM-C13/1N/03-A	170575	1/60
16/0.3	FRBmM-C16/1N/03-A	170576	1/60
20/0.3	FRBmM-C20/1N/03-A	170577	1/60
25/0.3	FRBmM-C25/1N/03-A	170578	1/60
32/0.3	FRBmM-C32/1N/03-A	170579	1/60
40/0.3	FRBmM-C40/1N/03-A	170580	1/60

SG03013



**Characteristic D**

2/0.01	FRBmM-D2/1N/001-A	170914	1/60
4/0.01	FRBmM-D4/1N/001-A	170915	1/60
6/0.01	FRBmM-D6/1N/001-A	170916	1/60
10/0.01	FRBmM-D10/1N/001-A	170917	1/60
13/0.01	FRBmM-D13/1N/001-A	170918	1/60
16/0.01	FRBmM-D16/1N/001-A	170919	1/60
2/0.03	FRBmM-D2/1N/003-A	170643	1/60
4/0.03	FRBmM-D4/1N/003-A	170644	1/60
6/0.03	FRBmM-D6/1N/003-A	170645	1/60
10/0.03	FRBmM-D10/1N/003-A	170646	1/60
13/0.03	FRBmM-D13/1N/003-A	170647	1/60
16/0.03	FRBmM-D16/1N/003-A	170648	1/60
20/0.03	FRBmM-D20/1N/003-A	170649	1/60
2/0.1	FRBmM-D2/1N/01-A	170544	1/60
4/0.1	FRBmM-D4/1N/01-A	170545	1/60
6/0.1	FRBmM-D6/1N/01-A	170546	1/60
10/0.1	FRBmM-D10/1N/01-A	170547	1/60
13/0.1	FRBmM-D13/1N/01-A	170548	1/60
16/0.1	FRBmM-D16/1N/01-A	170549	1/60
20/0.1	FRBmM-D20/1N/01-A	170550	1/60
2/0.3	FRBmM-D2/1N/03-A	170594	1/60
4/0.3	FRBmM-D4/1N/03-A	170595	1/60
6/0.3	FRBmM-D6/1N/03-A	170596	1/60
10/0.3	FRBmM-D10/1N/03-A	170597	1/60
13/0.3	FRBmM-D13/1N/03-A	170598	1/60
16/0.3	FRBmM-D16/1N/03-A	170599	1/60
20/0.3	FRBmM-D20/1N/03-A	170868	1/60

$I_n/I_{\Delta n}$ (A)	Type Designation	Article No.	Units per package
---------------------------	---------------------	-------------	----------------------

### Type AC

10 kA, 1+N-poles

Conditionally surge current-proof 250 A, Type AC 

SG03013



#### Characteristic B

6/0.01	FRBmM-B6/1N/001	170971	1/60
10/0.01	FRBmM-B10/1N/001	170972	1/60
13/0.01	FRBmM-B13/1N/001	170973	1/60
16/0.01	FRBmM-B16/1N/001	170974	1/60
6/0.03	FRBmM-B6/1N/003	170920	1/60
10/0.03	FRBmM-B10/1N/003	170695	1/60
13/0.03	FRBmM-B13/1N/003	170696	1/60
16/0.03	FRBmM-B16/1N/003	170697	1/60
20/0.03	FRBmM-B20/1N/003	170698	1/60
25/0.03	FRBmM-B25/1N/003	170699	1/60
32/0.03	FRBmM-B32/1N/003	170700	1/60
40/0.03	FRBmM-B40/1N/003	170701	1/60
6/0.1	FRBmM-B6/1N/01	170656	1/60
10/0.1	FRBmM-B10/1N/01	170657	1/60
13/0.1	FRBmM-B13/1N/01	170658	1/60
16/0.1	FRBmM-B16/1N/01	170659	1/60
20/0.1	FRBmM-B20/1N/01	170660	1/60
25/0.1	FRBmM-B25/1N/01	170661	1/60
32/0.1	FRBmM-B32/1N/01	170662	1/60
40/0.1	FRBmM-B40/1N/01	170663	1/60
6/0.3	FRBmM-B6/1N/03	170551	1/60
10/0.3	FRBmM-B10/1N/03	170600	1/60
13/0.3	FRBmM-B13/1N/03	170601	1/60
16/0.3	FRBmM-B16/1N/03	170602	1/60
20/0.3	FRBmM-B20/1N/03	170603	1/60
25/0.3	FRBmM-B25/1N/03	170604	1/60
32/0.3	FRBmM-B32/1N/03	170605	1/60
40/0.3	FRBmM-B40/1N/03	170606	1/60

SG03013



#### Characteristic C

2/0.01	FRBmM-C2/1N/001	170979	1/60
4/0.01	FRBmM-C4/1N/001	170980	1/60
6/0.01	FRBmM-C6/1N/001	170981	1/60
10/0.01	FRBmM-C10/1N/001	170982	1/60
13/0.01	FRBmM-C13/1N/001	170983	1/60
16/0.01	FRBmM-C16/1N/001	170984	1/60
2/0.03	FRBmM-C2/1N/003	170532	1/60
4/0.03	FRBmM-C4/1N/003	170533	1/60
6/0.03	FRBmM-C6/1N/003	170534	1/60
10/0.03	FRBmM-C10/1N/003	170535	1/60
13/0.03	FRBmM-C13/1N/003	170536	1/60
16/0.03	FRBmM-C16/1N/003	170537	1/60
20/0.03	FRBmM-C20/1N/003	170538	1/60
25/0.03	FRBmM-C25/1N/003	170539	1/60
32/0.03	FRBmM-C32/1N/003	170612	1/60
40/0.03	FRBmM-C40/1N/003	170613	1/60
2/0.1	FRBmM-C2/1N/01	170672	1/60
4/0.1	FRBmM-C4/1N/01	170673	1/60
6/0.1	FRBmM-C6/1N/01	170674	1/60
10/0.1	FRBmM-C10/1N/01	170675	1/60
13/0.1	FRBmM-C13/1N/01	170676	1/60
16/0.1	FRBmM-C16/1N/01	170677	1/60
20/0.1	FRBmM-C20/1N/01	170678	1/60
25/0.1	FRBmM-C25/1N/01	170679	1/60
32/0.1	FRBmM-C32/1N/01	170680	1/60
40/0.1	FRBmM-C40/1N/01	170681	1/60
2/0.3	FRBmM-C2/1N/03	170561	1/60
4/0.3	FRBmM-C4/1N/03	170562	1/60
6/0.3	FRBmM-C6/1N/03	170563	1/60
10/0.3	FRBmM-C10/1N/03	170564	1/60
13/0.3	FRBmM-C13/1N/03	170565	1/60
16/0.3	FRBmM-C16/1N/03	170566	1/60
20/0.3	FRBmM-C20/1N/03	170567	1/60
25/0.3	FRBmM-C25/1N/03	170568	1/60
32/0.3	FRBmM-C32/1N/03	170569	1/60
40/0.3	FRBmM-C40/1N/03	170570	1/60



SG03013



**Characteristic D**

2/0.01	FRBmM-D2/1N/001	170922	1/60
4/0.01	FRBmM-D4/1N/001	170909	1/60
6/0.01	FRBmM-D6/1N/001	170910	1/60
10/0.01	FRBmM-D10/1N/001	170911	1/60
13/0.01	FRBmM-D13/1N/001	170912	1/60
16/0.01	FRBmM-D16/1N/001	170913	1/60
2/0.03	FRBmM-D2/1N/003	170636	1/60
4/0.03	FRBmM-D4/1N/003	170637	1/60
6/0.03	FRBmM-D6/1N/003	170638	1/60
10/0.03	FRBmM-D10/1N/003	170639	1/60
13/0.03	FRBmM-D13/1N/003	170640	1/60
16/0.03	FRBmM-D16/1N/003	170641	1/60
20/0.03	FRBmM-D20/1N/003	170642	1/60
2/0.1	FRBmM-D2/1N/01	170692	1/60
4/0.1	FRBmM-D4/1N/01	170693	1/60
6/0.1	FRBmM-D6/1N/01	170694	1/60
10/0.1	FRBmM-D10/1N/01	170540	1/60
13/0.1	FRBmM-D13/1N/01	170541	1/60
16/0.1	FRBmM-D16/1N/01	170542	1/60
20/0.1	FRBmM-D20/1N/01	170543	1/60
2/0.3	FRBmM-D2/1N/03	170587	1/60
4/0.3	FRBmM-D4/1N/03	170588	1/60
6/0.3	FRBmM-D6/1N/03	170589	1/60
10/0.3	FRBmM-D10/1N/03	170590	1/60
13/0.3	FRBmM-D13/1N/03	170591	1/60
16/0.3	FRBmM-D16/1N/03	170592	1/60
20/0.3	FRBmM-D20/1N/03	170593	1/60

**Type G/A**

**6 kA, 1+N-poles**

**Surge current-proof 3 kA, sensitive to residual pulsating DC, Type G/A (ÖVE E 8601)** 

SG03013



**Characteristic B**

13/003	FRBm6-B13/1N/003-G/A	177847	1/60
16/003	FRBm6-B16/1N/003-G/A	177848	1/60
20/003	FRBm6-B20/1N/003-G/A	177849	1/60
25/003	FRBm6-B25/1N/003-G/A	177850	1/60
32/003	FRBm6-B32/1N/003-G/A	177851	1/60
40/003	FRBm6-B40/1N/003-G/A	177852	1/60

SG03013



**Characteristic C**

13/003	FRBm6-C13/1N/003-G/A	177853	1/60
16/003	FRBm6-C16/1N/003-G/A	177854	1/60
20/003	FRBm6-C20/1N/003-G/A	177855	1/60
25/003	FRBm6-C25/1N/003-G/A	177856	1/60
32/003	FRBm6-C32/1N/003-G/A	177857	1/60
40/003	FRBm6-C40/1N/003-G/A	177858	1/60

SG03013



**Characteristic D**

13/003	FRBm6-D13/1N/003-G/A	177859	1/60
16/003	FRBm6-D16/1N/003-G/A	177860	1/60
20/003	FRBm6-D20/1N/003-G/A	177861	1/60

---

**Specifications | Combined RCD/MCB Devices FRBm., 1+N-poles**


---

**Description**

- Combined RCD/MCB device
  - Line voltage-independent tripping
  - Compatible with standard busbar
  - Twin-purpose terminal (lift/open-mouthed) above and below
  - Busbar positioning optionally above or below
  - Free terminal space despite installed busbar
  - Guide for secure terminal connection
  - Contact position indicator red - green
  - Comprehensive range of accessories suitable for subsequent installation
  - Nameplate
  - The test key "T" must be pressed every 6 months. The system operator must be informed of this obligation and his responsibility in a way that can be proven. Under special conditions (e.g. damply and/or dusty environments, environments with polluting and/or corroding conditions, environments with large temperature fluctuations, installations with a risk of overvoltages due to switching of equipment and/or atmospheric discharges, portable equipment ...), it's recommended to test in monthly intervals.
  - Pressing the test key "T" serves the only purpose of function testing the residual current device (RCD). This test does not make earthing resistance measurement ( $R_E$ ), or proper checking of the earth conductor condition redundant, which must be performed separately.
- **Type -A:** Protects against special forms of residual pulsating DC which have not been smoothed.
  - **Type -G:** High reliability against unwanted tripping. Compulsory for any circuit where personal injury or damage to property may occur in case of unwanted tripping (ÖVE/ÖNORM E 8001-1 § 12.1.6).

**Accessories:**

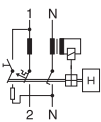
Auxiliary switch for subsequent installation	ZP-IHK	286052
	ZP-WHK	286053
Tripping signal switch for subsequent installation	ZP-NHK	248437
Shunt trip release	ZP-ASA/..	248438, 248439
Tripping module	Z-KAM	248294
Terminal cover 2-poles	Z-TC/SD-2P	178099

**Technical Data**

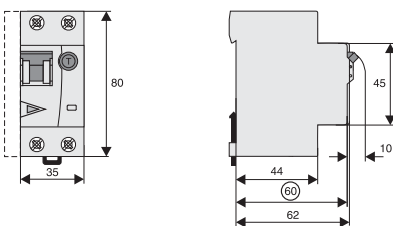
		FRBm., 1+N-poles
<b>Electrical</b>		
Design according to		IEC/EN 61009
Current test marks as printed onto the device		
Tripping line voltage-independent		instantaneous 250A (8/20µs), surge current-proof
Type G		10 ms delay 3kA (8/20µs), surge current-proof
Rated voltage	$U_n$	240 V AC, 50 Hz
Rated tripping current	$I_{\Delta n}$	10, 30, 100, 300 mA
Rated non-tripping current	$I_{\Delta no}$	0.5 $I_{\Delta n}$
Sensitivity		AC and pulsating DC
Selectivity class		3
Rated short circuit capacity	$I_{cn}$	
FRBmM		10 kA
FRBm6		6 kA
Rated current		2 - 40 A
Rated impulse withstand voltage	$U_{imp}$	4 kV (1.2/50µs)
Characteristic		B, C, D
Maximum back-up fuse (short circuit protection)		100 A gL (>10 kA)
<b>Endurance</b>		
electrical components		≥ 4,000 operating cycles
mechanical components		≥ 10,000 operating cycles
<b>Mechanical</b>		
Frame size		45 mm
Device height		80 mm
Device width		35 mm (2MU)
Mounting		3-position DIN rail clip, permits removal from existing busbar system
Degree of protection switch		IP20
Degree of protection, built-in		IP40
Upper and lower terminals		open mouthed/lift terminals
Terminal protection		finger and hand touch safe, DGUV VS3, EN 50274
Terminal capacity		1 - 25 mm <sup>2</sup>
Terminal torque		2 - 2.4 Nm
Busbar thickness		0.8 - 2 mm
Operation temperature		-25°C to +40°C
Storage- and transport temperature		-35°C to +60°C
Resistance to climatic conditions		acc. to IEC 68-2 (25..55°C / 90..95% RH)

**Connection diagram**

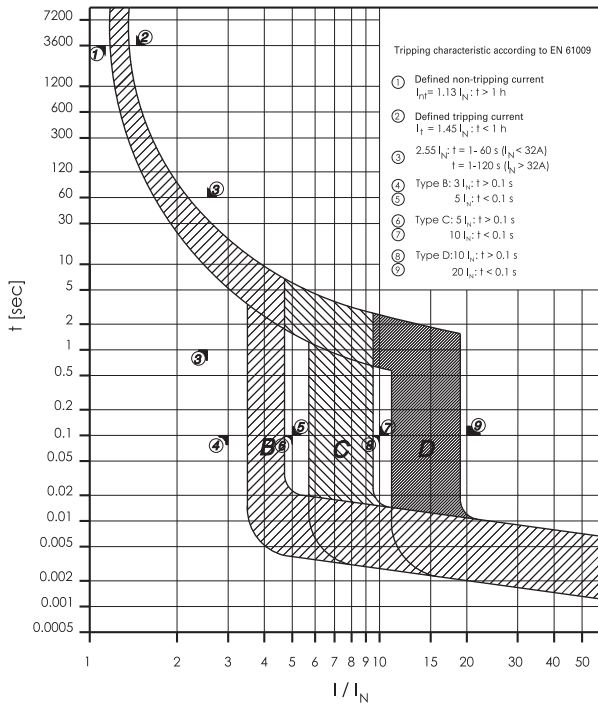
1+N-poles



**Dimensions (mm)**



### Tripping Characteristic FRBm.-./1N/, Characteristics B, C and D



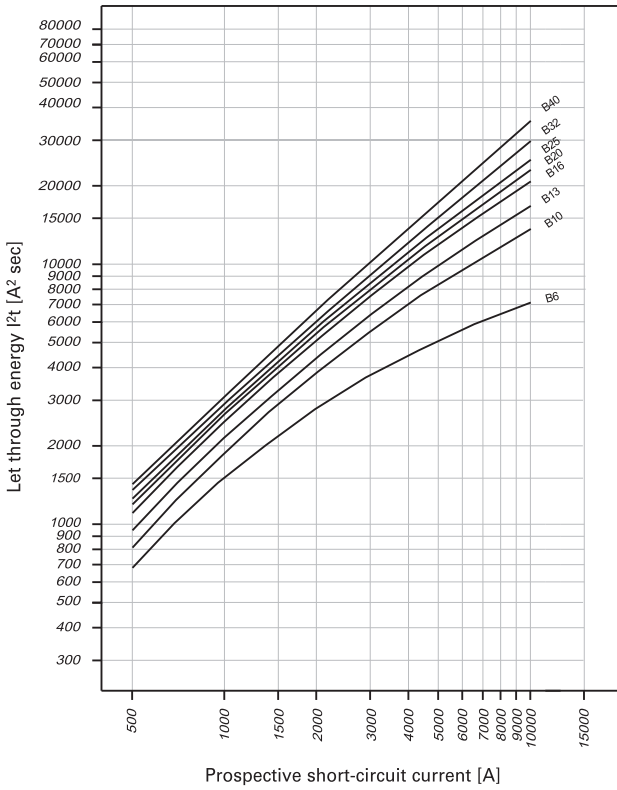
### Effect of ambient temperature FRBm.-./1N/

#### Effect of ambient temperature (MCB component)

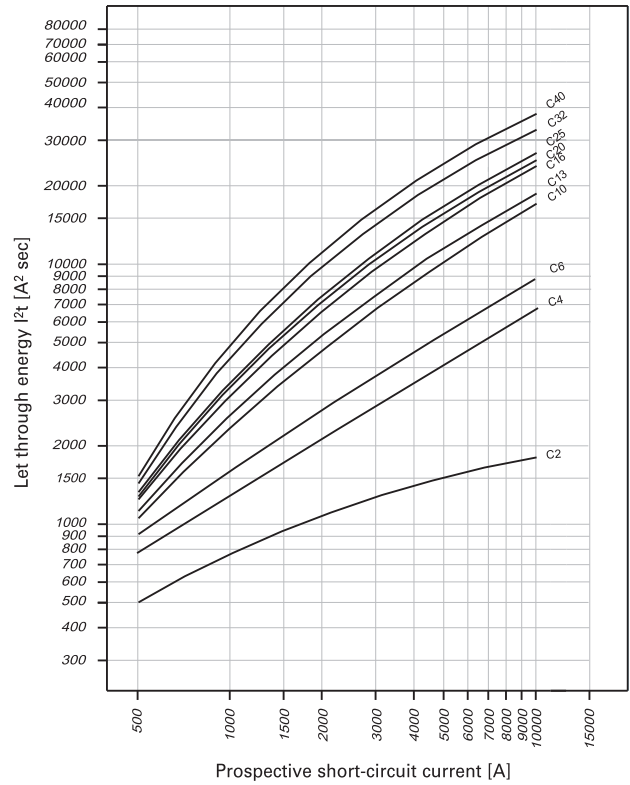
$I_n$ [A]	Ambient temperature T [°C]								
	-25	-20	-10	0	10	20	30	35	40
2	2.5	2.4	2.3	2.2	2.2	2.1	2.0	2.0	1.9
4	4.9	4.8	4.7	4.5	4.3	4.2	4.0	3.9	3.9
6	7.4	7.2	7.0	6.7	6.5	6.3	6.0	5.9	5.8
10	12	12	12	11	11	10	10	9.9	9.7
13	16	16	15	15	14	14	13	13	13
16	20	19	19	18	17	17	16	16	15
20	25	24	23	22	22	21	20	20	19
25	31	30	29	28	27	26	25	25	24
32	40	38	37	36	35	33	32	32	31
40	49	48	47	45	43	42	40	39	39

Let-through Energy FRBmM-../1N/

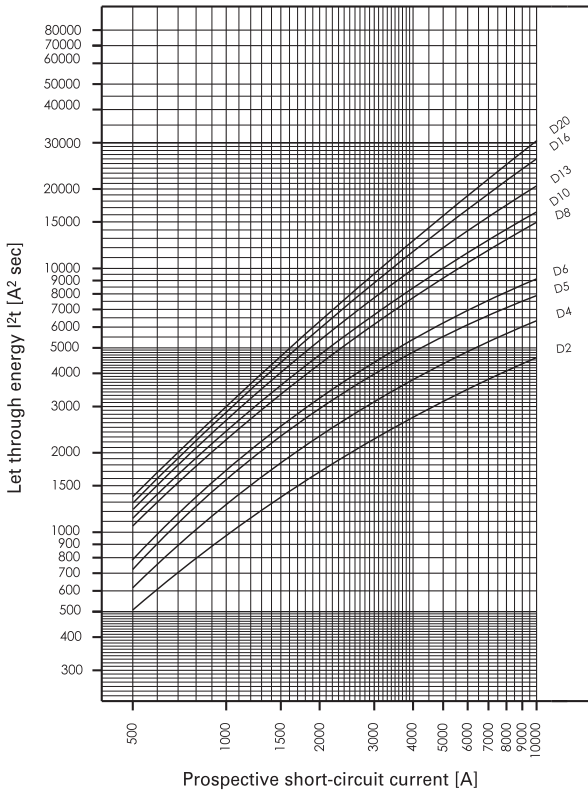
Let-through Energy FRBmM, Characteristic B, 1+Npolig



Let-through Energy FRBmM, Characteristic C, 1+Npolig



Let-through Energy FRBmM, Characteristic D, 1+Npolig



### Short-circuit Selectivity FRBmM-../1N/

In case of a short-circuit, selectivity is provided up to the specified selective current values  $I_s$  (kA) applicable between the FRBmM RCD/MCB circuit breakers and the up-stream protective devices.

When a short-circuit occurs, this means that with  $I_{KS}$  current values below  $I_s$  only the MCB will trip. However, in case of short-circuit currents beyond these values both protective devices will trip.

#### FRBmM-../1N/ and DII-DIV fuse link

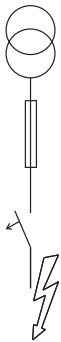
Short-circuit Selectivity **Characteristic B** towards fuse link **DII-DIV\***)

FRBmM $I_n$ [A]	DII-DIV gL/gG								
	10	16	20	25	35	50	63	80	100
6	<0.5 <sup>1)</sup>	0.7	1.0	2.9	6.9	10.0 <sup>2)</sup>	10.0 <sup>2)</sup>	10.0 <sup>2)</sup>	
10		0.6	0.9	1.9	3.3	7.0	10.0 <sup>2)</sup>	10.0 <sup>2)</sup>	
13		0.5	0.7	1.6	2.8	5.7	9.0	10.0 <sup>2)</sup>	
16			0.7	1.4	2.4	4.4	7.0	10.0 <sup>2)</sup>	
20				1.3	2.2	4.0	6.3	10.0 <sup>2)</sup>	
25				1.3	2.1	3.8	5.8	10.0 <sup>2)</sup>	
32					2.0	3.5	5.2	9.5	
40						3.1	4.5	8.1	

<sup>1)</sup> Selectivity-limit current  $I_s$  under 0.5 kA.

<sup>2)</sup> Selectivity-limit current  $I_s$  = Rated breaking capacity  $I_{cn}$  of the RCD/MCB device

Darker areas: no selectivity



Short-circuit Selectivity **Characteristic C** towards fuse link **DII-DIV\***)

FRBmM $I_n$ [A]	DII-DIV gL/gG								
	10	16	20	25	35	50	63	80	100
2	<0.5 <sup>1)</sup>	<0.5 <sup>1)</sup>	1.7	6.0	10.0 <sup>2)</sup>	10.0 <sup>2)</sup>	10.0 <sup>2)</sup>	10.0 <sup>2)</sup>	10.0 <sup>2)</sup>
4	<0.5 <sup>1)</sup>	<0.5 <sup>1)</sup>	0.7	1.3	4.2	8.5	10.0 <sup>2)</sup>	10.0 <sup>2)</sup>	10.0 <sup>2)</sup>
6		<0.5 <sup>1)</sup>	0.6	1.0	2.9	5.8	10.0 <sup>2)</sup>	10.0 <sup>2)</sup>	10.0 <sup>2)</sup>
10			<0.5	0.7	1.5	2.6	5.3	9.0	10.0 <sup>2)</sup>
13					1.4	2.3	4.6	7.6	10.0 <sup>2)</sup>
16					1.2	1.8	3.4	5.5	10.0 <sup>2)</sup>
20					1.2	1.7	3.1	5.0	10.0 <sup>2)</sup>
25						1.6	2.9	4.6	10.0 <sup>2)</sup>
32							2.3	3.4	7.7
40								2.9	6.2

Short-circuit Selectivity **Characteristic D** towards fuse link **DII-DIV\***)

FRBmM $I_n$ [A]	DII-DIV gL/gG								
	10	16	20	25	35	50	63	80	100
2	<0.5 <sup>1)</sup>	<0.5 <sup>1)</sup>	1.0	1.8	6.5	10.0 <sup>2)</sup>	10.0 <sup>2)</sup>	10.0 <sup>2)</sup>	10.0 <sup>2)</sup>
4		<0.5 <sup>1)</sup>	0.8	1.3	3.8	9.0	10.0 <sup>2)</sup>	10.0 <sup>2)</sup>	10.0 <sup>2)</sup>
6			0.6	0.9	2.3	4.7	10.0 <sup>2)</sup>	10.0 <sup>2)</sup>	10.0 <sup>2)</sup>
10				0.7	1.5	2.6	5.5	9.4	10.0 <sup>2)</sup>
13					1.4	2.2	4.4	7.0	10.0 <sup>2)</sup>
16						2.0	3.7	5.5	10.0 <sup>2)</sup>
20						1.9	3.4	5.0	10.0 <sup>2)</sup>

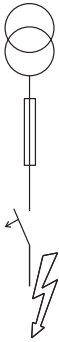
FRBmM-../1N/ and D01-D03 fuse link

Short-circuit Selectivity **Characteristic B** towards fuse link **D01-D03\***)

FRBmM	D01-D03 gL/gG								
	10	16	20	25	35	50	63	80	100
<b>I<sub>n</sub> [A]</b>									
6		<0.5 <sup>1)</sup>	0.5	0.8	2.4	8.2	10.0 <sup>2)</sup>	10.0 <sup>2)</sup>	10.0 <sup>2)</sup>
10			0.5	0.8	1.6	3.7	6.0	10.0 <sup>2)</sup>	10.0 <sup>2)</sup>
13			0.6	0.7	1.4	3.0	4.7	9.0	10.0 <sup>2)</sup>
16				0.6	1.2	2.6	3.9	7.0	10.0 <sup>2)</sup>
20					1.2	2.5	3.6	6.2	10.0 <sup>2)</sup>
25					1.2	2.3	3.3	5.7	10.0 <sup>2)</sup>
32						2.3	3.1	5.1	10.0 <sup>2)</sup>
40							2.8	4.5	9.5

<sup>1)</sup> Selectivity-limit current I<sub>s</sub> under 0.5 kA.

<sup>2)</sup> Selectivity-limit current I<sub>s</sub> = Rated breaking capacity I<sub>cn</sub> of the RCD/MCB device  
Darker areas: no selectivity



Short-circuit Selectivity **Characteristic C** towards fuse link **D01-D03\***)

FRBmM	D01-D03 gL/gG								
	10	16	20	25	35	50	63	80	100
<b>I<sub>n</sub> [A]</b>									
2		<0.5 <sup>1)</sup>	0.5	0.5	2.4	10.0 <sup>2)</sup>	10.0 <sup>2)</sup>	10.0 <sup>2)</sup>	10.0 <sup>2)</sup>
4		<0.5 <sup>1)</sup>	<0.5 <sup>1)</sup>	<0.5 <sup>1)</sup>	0.9	3.4	9.5	10.0 <sup>2)</sup>	10.0 <sup>2)</sup>
6			<0.5 <sup>1)</sup>	<0.5 <sup>1)</sup>	0.8	2.3	6.5	10.0 <sup>2)</sup>	10.0 <sup>2)</sup>
10				<0.5	0.6	1.3	2.9	4.5	8.9
13						1.2	2.5	3.9	7.6
16						1.0	2.1	3.0	5.5
20						1.0	2.0	2.7	5.0
25							1.9	2.6	4.5
32								2.1	3.4
40									3.0

Short-circuit Selectivity **Characteristic D** towards fuse link **D01-D03\***)

FRBmM	D01-D03 gL/gG								
	10	16	20	25	35	50	63	80	100
<b>I<sub>n</sub> [A]</b>									
2		<0.5 <sup>1)</sup>	0.5	0.8	1.2	5.0	10.0 <sup>2)</sup>	10.0 <sup>2)</sup>	10.0 <sup>2)</sup>
4			<0.5 <sup>1)</sup>	0.7	1.0	3.0	10.0 <sup>2)</sup>	10.0 <sup>2)</sup>	10.0 <sup>2)</sup>
6				0.5	0.8	1.9	5.5	10.0 <sup>2)</sup>	10.0 <sup>2)</sup>
10					0.6	1.3	2.9	4.7	9.2
13						1.2	2.5	3.8	7.0
16							2.3	3.2	5.5
20							2.2	3.0	3.9

FRBmM-../1N/ and NH-00 fuse link

Short-circuit Selectivity **Characteristic B** towards fuse link **NH-00\***)

FRBmM	NH-00 gL/gG											
	16	20	25	32	35	40	50	63	80	100	125	160
<b>I<sub>n</sub> [A]</b>												
6		<0.5 <sup>1)</sup>	0.5	0.8	1.4	2.2	3.3	7.0	10.0 <sup>2)</sup>	10.0 <sup>2)</sup>	10.0 <sup>2)</sup>	10.0 <sup>2)</sup>
10			<0.5 <sup>1)</sup>	0.7	0.9	1.5	2.1	3.4	4.3	7.3	10.0 <sup>2)</sup>	10.0 <sup>2)</sup>
13			<0.5 <sup>1)</sup>	0.6	0.8	1.4	1.8	2.8	3.6	5.7	10.0 <sup>2)</sup>	10.0 <sup>2)</sup>
16				0.6	0.7	1.2	1.5	2.4	3.0	4.5	10.0 <sup>2)</sup>	10.0 <sup>2)</sup>
20					0.7	1.1	1.5	2.2	2.8	4.2	9.2	10.0 <sup>2)</sup>
25					0.7	1.1	1.4	2.1	2.6	4.0	8.2	10.0 <sup>2)</sup>
32						1.0	1.4	2.0	2.5	3.7	7.1	10.0 <sup>2)</sup>
40								2.3	3.4	6.2	8.8	10.0 <sup>2)</sup>

<sup>1)</sup> Selectivity-limit current I<sub>s</sub> under 0.5 kA.

<sup>2)</sup> Selectivity-limit current I<sub>s</sub> = Rated breaking capacity I<sub>cn</sub> of the RCD/MCB device  
Darker areas: no selectivity



Short-circuit Selectivity **Characteristic C** towards fuse link **NH-00\***)

FRBmM	NH-00 gL/gG											
	16	20	25	32	35	40	50	63	80	100	125	160
<b>I<sub>n</sub> [A]</b>												
2		<0.5 <sup>1)</sup>	0.6	2.6	10.0 <sup>2)</sup>	10.0 <sup>2)</sup>	10.0 <sup>2)</sup>	10.0 <sup>2)</sup>	10.0 <sup>2)</sup>	10.0 <sup>2)</sup>	10.0 <sup>2)</sup>	10.0 <sup>2)</sup>
4		<0.5 <sup>1)</sup>	<0.5 <sup>1)</sup>	0.9	1.8	3.2	4.8	8.7	10.0 <sup>2)</sup>	10.0 <sup>2)</sup>	10.0 <sup>2)</sup>	10.0 <sup>2)</sup>
6		<0.5 <sup>1)</sup>	<0.5 <sup>1)</sup>	0.7	1.3	2.2	3.3	5.9	8.0	10.0 <sup>2)</sup>	10.0 <sup>2)</sup>	10.0 <sup>2)</sup>
10				0.5	0.8	1.2	1.7	2.7	3.4	5.5	10.0 <sup>2)</sup>	10.0 <sup>2)</sup>
13						1.1	1.5	2.3	2.9	4.7	10.0 <sup>2)</sup>	10.0 <sup>2)</sup>
16						1.0	1.3	1.8	2.3	3.7	8.7	10.0 <sup>2)</sup>
20						0.9	1.1	1.7	2.2	3.4	8.0	10.0 <sup>2)</sup>
25							1.6	2.1	3.2	7.2	10.0 <sup>2)</sup>	10.0 <sup>2)</sup>
32								1.7	2.6	5.3	9.0	10.0 <sup>2)</sup>
40									2.4	4.5	7.5	10.0

Short-circuit Selectivity **Characteristic D** towards fuse link **NH-00\***)

FRBmM	NH-00 gL/gG											
	16	20	25	32	35	40	50	63	80	100	125	160
<b>I<sub>n</sub> [A]</b>												
2		<0.5 <sup>1)</sup>	0.6	1.3	2.5	4.7	7.7	10.0 <sup>2)</sup>	10.0 <sup>2)</sup>	10.0 <sup>2)</sup>	10.0 <sup>2)</sup>	10.0 <sup>2)</sup>
4		<0.5 <sup>1)</sup>	0.5	0.9	1.6	2.8	4.3	9.2	10.0 <sup>2)</sup>	10.0 <sup>2)</sup>	10.0 <sup>2)</sup>	10.0 <sup>2)</sup>
6			<0.5 <sup>1)</sup>	0.7	1.2	1.8	2.6	4.9	7.0	10.0 <sup>2)</sup>	10.0 <sup>2)</sup>	10.0 <sup>2)</sup>
10				0.5	0.8	1.2	1.7	2.7	3.5	5.6	10.0 <sup>2)</sup>	10.0 <sup>2)</sup>
13						1.1	1.5	2.3	2.9	4.5	10.0 <sup>2)</sup>	10.0 <sup>2)</sup>
16							1.4	2.0	2.6	3.9	8.0	10.0 <sup>2)</sup>
20								1.9	2.4	3.6	7.0	10.0 <sup>2)</sup>