

SG56912



Description

FAZ-NA/-RT

- According to UL 489, CSA C22.2 No. 5 and also IEC 60947-2 standard
- For Applications, which are permitted for UL 1077 or CSA C22.2 No. 235
- Auxiliary switch and voltage trips suitable for subsequent installation
- Serie with removable terminal screws (Type FAZ-...-RT), for use with ring cable lug
- Contact position indicator red - green
- Easy mounting at DIN-rail

Rated current I_n (A)	Rated voltage acc. to IEC/EN 60947-2 (V)	Breaking capacity acc. to IEC/EN 60947-2 (kA)	Rated voltage acc. to UL489 (V)	Breaking capacity acc. to UL489 (kA)	SWD	NFPA 79	Type Designation	Article No.	Units per package
----------------------------	--	--	--	--	-----	---------	---------------------	-------------	----------------------

Characteristic B

SG53012



1-pole

1	254	15	277	10	SWD	AWG 18	FAZ-B1/1-NA	132414	2/80
1.5	254	15	277	10	SWD	AWG 18	FAZ-B1.5/1-NA	132415	2/80
2	254	15	277	10	SWD	AWG 18	FAZ-B2/1-NA	132416	2/80
3	254	15	277	10	SWD	AWG 18	FAZ-B3/1-NA	132417	2/80
4	254	15	277	10	SWD	AWG 18	FAZ-B4/1-NA	132418	2/80
5	254	15	277	10	SWD	AWG 18	FAZ-B5/1-NA	132419	2/80
6	254	15	277	10	SWD	AWG 18	FAZ-B6/1-NA	132680	2/80
7	254	15	277	10	SWD	AWG 18	FAZ-B7/1-NA	132681	2/80
8	254	15	277	10	SWD	AWG 16	FAZ-B8/1-NA	132682	2/80
10	254	15	277	10	SWD	AWG 16	FAZ-B10/1-NA	132683	2/80
13	254	15	277	10	SWD		FAZ-B13/1-NA	132684	2/80
15	254	15	277	14	SWD		FAZ-B15/1-NA	132685	2/80
16	254	15	277	14	SWD		FAZ-B16/1-NA	132686	2/80
20	254	15	277	14	SWD		FAZ-B20/1-NA	132687	2/80
25	254	15	277	14			FAZ-B25/1-NA	132688	2/80
30	254	15	277	10			FAZ-B30/1-NA	132689	2/80
32	254	15	277	10			FAZ-B32/1-NA	132690	2/80
35	254	15	240	10			FAZ-B35/1-NA	132691	2/80
40	254	15	240	10			FAZ-B40/1-NA	132692	2/80
50	240	15	240	10			FAZ-B50/1-NA	190779	2/80
63	240	15	240	10			FAZ-B63/1-NA	190780	2/80

SG56812



2-poles

1	440	15	480Y/277	10	SWD	AWG 18	FAZ-B1/2-NA	132693	1/40
1.5	440	15	480Y/277	10	SWD	AWG 18	FAZ-B1.5/2-NA	132694	1/40
2	440	15	480Y/277	10	SWD	AWG 18	FAZ-B2/2-NA	132695	1/40
3	440	15	480Y/277	10	SWD	AWG 18	FAZ-B3/2-NA	132696	1/40
4	440	15	480Y/277	10	SWD	AWG 18	FAZ-B4/2-NA	132697	1/40
5	440	15	480Y/277	10	SWD	AWG 18	FAZ-B5/2-NA	132698	1/40
6	440	15	480Y/277	10	SWD	AWG 18	FAZ-B6/2-NA	132699	1/40
7	440	15	480Y/277	10	SWD	AWG 18	FAZ-B7/2-NA	132700	1/40
8	440	15	480Y/277	10	SWD	AWG 16	FAZ-B8/2-NA	132701	1/40
10	440	15	480Y/277	10	SWD	AWG 16	FAZ-B10/2-NA	132702	1/40
13	440	15	480Y/277	10	SWD		FAZ-B13/2-NA	132703	1/40
15	440	15	480Y/277	14	SWD		FAZ-B15/2-NA	132704	1/40
16	440	15	480Y/277	14	SWD		FAZ-B16/2-NA	132705	1/40
20	440	15	480Y/277	14	SWD		FAZ-B20/2-NA	132706	1/40
25	440	15	480Y/277	14			FAZ-B25/2-NA	132707	1/40
30	440	15	480Y/277	10			FAZ-B30/2-NA	132708	1/40
32	440	15	480Y/277	10			FAZ-B32/2-NA	132709	1/40
35	440	15	240	10			FAZ-B35/2-NA	132710	1/40
40	440	15	240	10			FAZ-B40/2-NA	132711	1/40
50	415	15	240	10			FAZ-B50/2-NA	190783	1/40
63	415	15	240	10			FAZ-B63/2-NA	190784	1/40

Rated current I_n (A)	Rated voltage acc. to IEC/EN 60947-2 (V)	Breaking capacity acc. to IEC/EN 60947-2 (kA)	Rated voltage acc. to UL489 (V)	Breaking capacity acc. to UL489 (kA)	SWD	NFPA 79	Type Designation	Article No.	Units per package
----------------------------	--	--	--	--	-----	---------	---------------------	-------------	----------------------

SG56912



3-poles

1	440	15	480Y/277	10	SWD	AWG 18	FAZ-B1/3-NA	132712	1/28
1.5	440	15	480Y/277	10	SWD	AWG 18	FAZ-B1.5/3-NA	132713	1/28
2	440	15	480Y/277	10	SWD	AWG 18	FAZ-B2/3-NA	132714	1/28
3	440	15	480Y/277	10	SWD	AWG 18	FAZ-B3/3-NA	132715	1/28
4	440	15	480Y/277	10	SWD	AWG 18	FAZ-B4/3-NA	132716	1/28
5	440	15	480Y/277	10	SWD	AWG 18	FAZ-B5/3-NA	132717	1/28
6	440	15	480Y/277	10	SWD	AWG 18	FAZ-B6/3-NA	132718	1/28
7	440	15	480Y/277	10	SWD	AWG 18	FAZ-B7/3-NA	132719	1/28
8	440	15	480Y/277	10	SWD	AWG 16	FAZ-B8/3-NA	132720	1/28
10	440	15	480Y/277	10	SWD	AWG 16	FAZ-B10/3-NA	132721	1/28
13	440	15	480Y/277	10	SWD		FAZ-B13/3-NA	132722	1/28
15	440	15	480Y/277	14	SWD		FAZ-B15/3-NA	132723	1/28
16	440	15	480Y/277	14	SWD		FAZ-B16/3-NA	132724	1/28
20	440	15	480Y/277	14	SWD		FAZ-B20/3-NA	132725	1/28
25	440	15	480Y/277	14			FAZ-B25/3-NA	132726	1/28
30	440	15	480Y/277	10			FAZ-B30/3-NA	132727	1/28
32	440	15	480Y/277	10			FAZ-B32/3-NA	132728	1/28
35	440	15	240	10			FAZ-B35/3-NA	132729	1/28
40	440	15	240	10			FAZ-B40/3-NA	132730	1/28
50	415	15	240	10			FAZ-B50/3-NA	190787	1/28
63	415	15	240	10			FAZ-B63/3-NA	190788	1/28

wa_sg01017



4-poles

1	440	15	480Y/277	10		AWG18	FAZ-B1/4-NA	190899	1/20
1.5	440	15	480Y/277	10		AWG18	FAZ-B1.5/4-NA	190900	1/20
2	440	15	480Y/277	10		AWG18	FAZ-B2/4-NA	190901	1/20
3	440	15	480Y/277	10		AWG18	FAZ-B3/4-NA	190902	1/20
4	440	15	480Y/277	10		AWG18	FAZ-B4/4-NA	190903	1/20
5	440	15	480Y/277	10		AWG18	FAZ-B5/4-NA	190904	1/20
6	440	15	480Y/277	10		AWG18	FAZ-B6/4-NA	190905	1/20
7	440	15	480Y/277	10		AWG18	FAZ-B7/4-NA	190906	1/20
8	440	15	480Y/277	10		AWG16	FAZ-B8/4-NA	190927	1/20
10	440	15	480Y/277	10		AWG16	FAZ-B10/4-NA	190928	1/20
13	440	15	480Y/277	10			FAZ-B13/4-NA	190907	1/20
15	440	15	480Y/277	14			FAZ-B15/4-NA	190908	1/20
16	440	15	480Y/277	14			FAZ-B16/4-NA	190909	1/20
20	440	15	480Y/277	14			FAZ-B20/4-NA	190910	1/20
25	440	15	480Y/277	14			FAZ-B25/4-NA	190911	1/20
30	440	15	480Y/277	10			FAZ-B30/4-NA	190912	1/20
32	440	15	480Y/277	10			FAZ-B32/4-NA	190913	1/20
35	440	15	240	10			FAZ-B35/4-NA	190914	1/20
40	440	15	240	10			FAZ-B40/4-NA	190915	1/20
50	415	15	240	10			FAZ-B50/4-NA	190789	1/20
63	415	15	240	10			FAZ-B63/4-NA	190790	1/20

Rated current I_n (A)	Rated voltage acc. to IEC/EN 60947-2 (V)	Breaking capacity acc. to IEC/EN 60947-2 (kA)	Rated voltage acc. to UL489 (V)	Breaking capacity acc. to UL489 (kA)	SWD	NFPA 79	Type Designation	Article No.	Units per package
----------------------------	--	--	--	--	-----	---------	---------------------	-------------	----------------------

Characteristic C

SG53012



1-pole

0.5	254	15	277	10	SWD	AWG 18	FAZ-C0,5/1-NA	102077	2/80
1	254	15	277	10	SWD	AWG 18	FAZ-C1/1-NA	102078	2/80
1.5	254	15	277	10	SWD	AWG 18	FAZ-C1,5/1-NA	102079	2/80
2	254	15	277	10	SWD	AWG 18	FAZ-C2/1-NA	102080	2/80
3	254	15	277	10	SWD	AWG 18	FAZ-C3/1-NA	102081	2/80
4	254	15	277	10	SWD	AWG 18	FAZ-C4/1-NA	102082	2/80
5	254	15	277	10	SWD	AWG 18	FAZ-C5/1-NA	102083	2/80
6	254	15	277	10	SWD	AWG 18	FAZ-C6/1-NA	102084	2/80
7	254	15	277	10	SWD	AWG 18	FAZ-C7/1-NA	102085	2/80
8	254	15	277	10	SWD	AWG 16	FAZ-C8/1-NA	102086	2/80
10	254	15	277	10	SWD	AWG 16	FAZ-C10/1-NA	102087	2/80
13	254	15	277	10	SWD		FAZ-C13/1-NA	102088	2/80
15	254	15	277	14	SWD		FAZ-C15/1-NA	102089	2/80
16	254	15	277	14	SWD		FAZ-C16/1-NA	102090	2/80
20	254	15	277	14	SWD		FAZ-C20/1-NA	102091	2/80
25	254	15	277	14			FAZ-C25/1-NA	102092	2/80
30	254	15	277	10			FAZ-C30/1-NA	102093	2/80
32	254	15	277	10			FAZ-C32/1-NA	102094	2/80
35	254	15	240	10			FAZ-C35/1-NA	102095	2/80
40	254	15	240	10			FAZ-C40/1-NA	102096	2/80
50	240	15	240	10			FAZ-C50/1-NA	190781	2/80
63	240	15	240	10			FAZ-C63/1-NA	190782	2/80

SG56812



2-poles

0.5	440	15	480Y/277	10	SWD	AWG 18	FAZ-C0,5/2-NA	102157	1/40
1	440	15	480Y/277	10	SWD	AWG 18	FAZ-C1/2-NA	102158	1/40
1.5	440	15	480Y/277	10	SWD	AWG 18	FAZ-C1,5/2-NA	102159	1/40
2	440	15	480Y/277	10	SWD	AWG 18	FAZ-C2/2-NA	102160	1/40
3	440	15	480Y/277	10	SWD	AWG 18	FAZ-C3/2-NA	102161	1/40
4	440	15	480Y/277	10	SWD	AWG 18	FAZ-C4/2-NA	102162	1/40
5	440	15	480Y/277	10	SWD	AWG 18	FAZ-C5/2-NA	102163	1/40
6	440	15	480Y/277	10	SWD	AWG 18	FAZ-C6/2-NA	102164	1/40
7	440	15	480Y/277	10	SWD	AWG 18	FAZ-C7/2-NA	102165	1/40
8	440	15	480Y/277	10	SWD	AWG 16	FAZ-C8/2-NA	102166	1/40
10	440	15	480Y/277	10	SWD	AWG 16	FAZ-C10/2-NA	102167	1/40
13	440	15	480Y/277	10	SWD		FAZ-C13/2-NA	102168	1/40
15	440	15	480Y/277	14	SWD		FAZ-C15/2-NA	102169	1/40
16	440	15	480Y/277	14	SWD		FAZ-C16/2-NA	102170	1/40
20	440	15	480Y/277	14	SWD		FAZ-C20/2-NA	102171	1/40
25	440	15	480Y/277	14			FAZ-C25/2-NA	102172	1/40
30	440	15	480Y/277	10			FAZ-C30/2-NA	102173	1/40
32	440	15	480Y/277	10			FAZ-C32/2-NA	102174	1/40
35	440	15	240	10			FAZ-C35/2-NA	102175	1/40
40	440	15	240	10			FAZ-C40/2-NA	102176	1/40
50	415	15	240	10			FAZ-C50/2-NA	190785	1/40
63	415	15	240	10			FAZ-C63/2-NA	190786	1/40

2.238 Miniature Circuit Breakers

FAZ - Technical Data

Rated current I_n (A)	Rated voltage acc. to IEC/EN 60947-2 (V)	Breaking capacity acc. to IEC/EN 60947-2 (kA)	Rated voltage acc. to UL489 (V)	Breaking capacity acc. to UL489 (kA)	SWD	NFPA 79	Type Designation	Article No.	Units per package
----------------------------	--	--	--	--	-----	---------	---------------------	-------------	----------------------

SG56912



3-poles

0.5	440	15	480Y/277	10	SWD	AWG 18	FAZ-C0,5/3-NA	102237	1/28
1	440	15	480Y/277	10	SWD	AWG 18	FAZ-C1/3-NA	102238	1/28
1.5	440	15	480Y/277	10	SWD	AWG 18	FAZ-C1,5/3-NA	102239	1/28
2	440	15	480Y/277	10	SWD	AWG 18	FAZ-C2/3-NA	102240	1/28
3	440	15	480Y/277	10	SWD	AWG 18	FAZ-C3/3-NA	102241	1/28
4	440	15	480Y/277	10	SWD	AWG 18	FAZ-C4/3-NA	102242	1/28
5	440	15	480Y/277	10	SWD	AWG 18	FAZ-C5/3-NA	102243	1/28
6	440	15	480Y/277	10	SWD	AWG 18	FAZ-C6/3-NA	102244	1/28
7	440	15	480Y/277	10	SWD	AWG 18	FAZ-C7/3-NA	102245	1/28
8	440	15	480Y/277	10	SWD	AWG 16	FAZ-C8/3-NA	102246	1/28
10	440	15	480Y/277	10	SWD	AWG 16	FAZ-C10/3-NA	102247	1/28
13	440	15	480Y/277	10	SWD		FAZ-C13/3-NA	102248	1/28
15	440	15	480Y/277	14	SWD		FAZ-C15/3-NA	102249	1/28
16	440	15	480Y/277	14	SWD		FAZ-C16/3-NA	102250	1/28
20	440	15	480Y/277	14	SWD		FAZ-C20/3-NA	102251	1/28
25	440	15	480Y/277	14			FAZ-C25/3-NA	102252	1/28
30	440	15	480Y/277	10			FAZ-C30/3-NA	102253	1/28
32	440	15	480Y/277	10			FAZ-C32/3-NA	102254	1/28
35	440	15	240	10			FAZ-C35/3-NA	102255	1/28
40	440	15	240	10			FAZ-C40/3-NA	102256	1/28
50	415	15	240	10			FAZ-C50/3-NA	190791	1/28
63	415	15	240	10			FAZ-C63/3-NA	190792	1/28

wa_sg01017



4-poles

0.5	440	15	480Y/277	10		AWG18	FAZ-C0,5/4-NA	190916	1/20
1	440	15	480Y/277	10		AWG18	FAZ-C1/4-NA	190917	1/20
1.5	440	15	480Y/277	10		AWG18	FAZ-C1,5/4-NA	190918	1/20
2	440	15	480Y/277	10		AWG18	FAZ-C2/4-NA	190919	1/20
3	440	15	480Y/277	10		AWG18	FAZ-C3/4-NA	190920	1/20
4	440	15	480Y/277	10		AWG18	FAZ-C4/4-NA	190921	1/20
5	440	15	480Y/277	10		AWG18	FAZ-C5/4-NA	190922	1/20
6	440	15	480Y/277	10		AWG18	FAZ-C6/4-NA	190923	1/20
7	440	15	480Y/277	10		AWG18	FAZ-C7/4-NA	190924	1/20
8	440	15	480Y/277	10		AWG16	FAZ-C8/4-NA	190925	1/20
10	440	15	480Y/277	10		AWG16	FAZ-C10/4-NA	190926	1/20
13	440	15	480Y/277	10			FAZ-C13/4-NA	190815	1/20
15	440	15	480Y/277	14			FAZ-C15/4-NA	190816	1/20
16	440	15	480Y/277	14			FAZ-C16/4-NA	190817	1/20
20	440	15	480Y/277	14			FAZ-C20/4-NA	190818	1/20
25	440	15	480Y/277	14			FAZ-C25/4-NA	190819	1/20
30	440	15	480Y/277	10			FAZ-C30/4-NA	190820	1/20
32	440	15	480Y/277	10			FAZ-C32/4-NA	190821	1/20
35	440	15	240	10			FAZ-C35/4-NA	190822	1/20
40	440	15	240	10			FAZ-C40/4-NA	190823	1/20
50	415	15	240	10			FAZ-C50/4-NA	190793	1/20
63	415	15	240	10			FAZ-C63/4-NA	190794	1/20

Rated current I_n (A)	Rated voltage acc. to IEC/EN 60947-2 (V)	Breaking capacity acc. to IEC/EN 60947-2 (kA)	Rated voltage acc. to UL489 (V)	Breaking capacity acc. to UL489 (kA)	SWD	NFPA 79	Type Designation	Article No.	Units per package
----------------------------	--	--	--	--	-----	---------	---------------------	-------------	----------------------

Characteristic D

SG53012



1-pole

0.5	240	15	277	10	SWD	AWG 18	FAZ-D0,5/1-NA	102097	2/80
1	240	15	277	10	SWD	AWG 18	FAZ-D1/1-NA	102098	2/80
1.5	240	15	277	10	SWD	AWG 18	FAZ-D1,5/1-NA	102099	2/80
2	240	15	277	10	SWD	AWG 18	FAZ-D2/1-NA	102100	2/80
3	240	15	277	10	SWD	AWG 18	FAZ-D3/1-NA	102101	2/80
4	240	15	277	10	SWD	AWG 18	FAZ-D4/1-NA	102102	2/80
5	240	15	277	10	SWD	AWG 18	FAZ-D5/1-NA	102103	2/80
6	240	15	277	10	SWD	AWG 18	FAZ-D6/1-NA	102104	2/80
7	240	15	277	10	SWD	AWG 18	FAZ-D7/1-NA	102105	2/80
8	240	15	277	10	SWD	AWG 16	FAZ-D8/1-NA	102106	2/80
10	240	15	277	10	SWD	AWG 16	FAZ-D10/1-NA	102107	2/80
13	240	15	277	14	SWD		FAZ-D13/1-NA	102108	2/80
15	240	15	277	14	SWD		FAZ-D15/1-NA	102109	2/80
16	240	15	277	14	SWD		FAZ-D16/1-NA	102110	2/80
20	240	15	277	14	SWD		FAZ-D20/1-NA	102111	2/80
25	240	15	277	10			FAZ-D25/1-NA	102112	2/80
30	240	15	277	10			FAZ-D30/1-NA	102113	2/80
32	240	15	277	10			FAZ-D32/1-NA	102114	2/80
35	240	15	240	10			FAZ-D35/1-NA	102115	2/80
40	240	15	240	10			FAZ-D40/1-NA	102116	2/80

SG56812



2-poles

0.5	415	15	480Y/277	10	SWD	AWG 18	FAZ-D0,5/2-NA	102177	1/40
1	415	15	480Y/277	10	SWD	AWG 18	FAZ-D1/2-NA	102178	1/40
1.5	415	15	480Y/277	10	SWD	AWG 18	FAZ-D1,5/2-NA	102179	1/40
2	415	15	480Y/277	10	SWD	AWG 18	FAZ-D2/2-NA	102180	1/40
3	415	15	480Y/277	10	SWD	AWG 18	FAZ-D3/2-NA	102181	1/40
4	415	15	480Y/277	10	SWD	AWG 18	FAZ-D4/2-NA	102182	1/40
5	415	15	480Y/277	10	SWD	AWG 18	FAZ-D5/2-NA	102183	1/40
6	415	15	480Y/277	10	SWD	AWG 18	FAZ-D6/2-NA	102184	1/40
7	415	15	480Y/277	10	SWD	AWG 18	FAZ-D7/2-NA	102185	1/40
8	415	15	480Y/277	10	SWD	AWG 16	FAZ-D8/2-NA	102186	1/40
10	415	15	480Y/277	10	SWD	AWG 16	FAZ-D10/2-NA	102187	1/40
13	415	15	480Y/277	14	SWD		FAZ-D13/2-NA	102188	1/40
15	415	15	480Y/277	14	SWD		FAZ-D15/2-NA	102189	1/40
16	415	15	480Y/277	14	SWD		FAZ-D16/2-NA	102190	1/40
20	415	15	480Y/277	14	SWD		FAZ-D20/2-NA	102191	1/40
25	415	15	480Y/277	10			FAZ-D25/2-NA	102192	1/40
30	415	15	480Y/277	10			FAZ-D30/2-NA	102193	1/40
32	415	15	480Y/277	10			FAZ-D32/2-NA	102194	1/40
35	415	15	240	10			FAZ-D35/2-NA	102195	1/40
40	415	15	240	10			FAZ-D40/2-NA	102196	1/40

2.240 Miniature Circuit Breakers

FAZ - Technical Data

Rated current I_n (A)	Rated voltage acc. to IEC/EN 60947-2 (V)	Breaking capacity acc. to IEC/EN 60947-2 (kA)	Rated voltage acc. to UL489 (V)	Breaking capacity acc. to UL489 (kA)	SWD	NFPA 79	Type Designation	Article No.	Units per package
----------------------------	--	--	--	--	-----	---------	---------------------	-------------	----------------------

SG56912



3-poles

0.5	415	15	480Y/277	10	SWD	AWG 18	FAZ-D0,5/3-NA	102257	1/28
1	415	15	480Y/277	10	SWD	AWG 18	FAZ-D1/3-NA	102258	1/28
1.5	415	15	480Y/277	10	SWD	AWG 18	FAZ-D1,5/3-NA	102259	1/28
2	415	15	480Y/277	10	SWD	AWG 18	FAZ-D2/3-NA	102260	1/28
3	415	15	480Y/277	10	SWD	AWG 18	FAZ-D3/3-NA	102261	1/28
4	415	15	480Y/277	10	SWD	AWG 18	FAZ-D4/3-NA	102262	1/28
5	415	15	480Y/277	10	SWD	AWG 18	FAZ-D5/3-NA	102263	1/28
6	415	15	480Y/277	10	SWD	AWG 18	FAZ-D6/3-NA	102264	1/28
7	415	15	480Y/277	10	SWD	AWG 18	FAZ-D7/3-NA	102265	1/28
8	415	15	480Y/277	10	SWD	AWG 16	FAZ-D8/3-NA	102266	1/28
10	415	15	480Y/277	10	SWD	AWG 16	FAZ-D10/3-NA	102267	1/28
13	415	15	480Y/277	14	SWD		FAZ-D13/3-NA	102268	1/28
15	415	15	480Y/277	14	SWD		FAZ-D15/3-NA	102269	1/28
16	415	15	480Y/277	14	SWD		FAZ-D16/3-NA	102270	1/28
20	415	15	480Y/277	14	SWD		FAZ-D20/3-NA	102271	1/28
25	415	15	480Y/277	10			FAZ-D25/3-NA	102272	1/28
30	415	15	480Y/277	10			FAZ-D30/3-NA	102273	1/28
32	415	15	480Y/277	10			FAZ-D32/3-NA	102274	1/28
35	415	15	240	10			FAZ-D35/3-NA	102275	1/28
40	415	15	240	10			FAZ-D40/3-NA	102276	1/28

wa_sg01017



4-poles

0.5	415	15	480Y/277	10		AWG18	FAZ-D0,5/4-NA	190824	1/20
1	415	15	480Y/277	10		AWG18	FAZ-D1/4-NA	190825	1/20
1.5	415	15	480Y/277	10		AWG18	FAZ-D1,5/4-NA	190826	1/20
2	415	15	480Y/277	10		AWG18	FAZ-D2/4-NA	190827	1/20
3	415	15	480Y/277	10		AWG18	FAZ-D3/4-NA	190828	1/20
4	415	15	480Y/277	10		AWG18	FAZ-D4/4-NA	190829	1/20
5	415	15	480Y/277	10		AWG18	FAZ-D5/4-NA	190830	1/20
6	415	15	480Y/277	10		AWG18	FAZ-D6/4-NA	190831	1/20
7	415	15	480Y/277	10		AWG18	FAZ-D7/4-NA	190832	1/20
8	415	15	480Y/277	10		AWG16	FAZ-D8/4-NA	190833	1/20
10	415	15	480Y/277	10		AWG16	FAZ-D10/4-NA	190834	1/20
13	415	15	480Y/277	10			FAZ-D13/4-NA	190835	1/20
15	415	15	480Y/277	14			FAZ-D15/4-NA	190836	1/20
16	415	15	480Y/277	14			FAZ-D16/4-NA	190837	1/20
20	415	15	480Y/277	14			FAZ-D20/4-NA	190838	1/20
25	415	15	480Y/277	14			FAZ-D25/4-NA	190839	1/20
30	415	15	480Y/277	10			FAZ-D30/4-NA	190840	1/20
32	415	15	480Y/277	10			FAZ-D32/4-NA	190841	1/20
35	415	15	240	10			FAZ-D35/4-NA	190842	1/20
40	415	15	240	10			FAZ-D40/4-NA	190843	1/20

Rated current I_n (A)	Rated voltage acc. to IEC/EN 60947-2 (V)	Breaking capacity acc. to IEC/EN 60947-2 (kA)	Rated voltage acc. to UL489 (V)	Breaking capacity acc. to UL489 (kA)	SWD	NFPA 79	Type Designation	Article No.	Units per package
----------------------------	--	--	--	--	-----	---------	---------------------	-------------	----------------------

Characteristic B

SG56412



1-pole

1	254	15	277	10	SWD	AWG 18	FAZ-B1/1-RT	132731	2/80
1,5	254	15	277	10	SWD	AWG 18	FAZ-B1,5/1-RT	132732	2/80
2	254	15	277	10	SWD	AWG 18	FAZ-B2/1-RT	132733	2/80
3	254	15	277	10	SWD	AWG 18	FAZ-B3/1-RT	132734	2/80
4	254	15	277	10	SWD	AWG 18	FAZ-B4/1-RT	132735	2/80
5	254	15	277	10	SWD	AWG 18	FAZ-B5/1-RT	132736	2/80
6	254	15	277	10	SWD	AWG 18	FAZ-B6/1-RT	132737	2/80
7	254	15	277	10	SWD	AWG 18	FAZ-B7/1-RT	132738	2/80
8	254	15	277	10	SWD	AWG 16	FAZ-B8/1-RT	132739	2/80
10	254	15	277	10	SWD	AWG 16	FAZ-B10/1-RT	132740	2/80
13	254	15	277	10	SWD		FAZ-B13/1-RT	132741	2/80
15	254	15	277	14	SWD		FAZ-B15/1-RT	132742	2/80
16	254	15	277	14	SWD		FAZ-B16/1-RT	132743	2/80
20	254	15	277	14	SWD		FAZ-B20/1-RT	132744	2/80
25	254	15	277	14			FAZ-B25/1-RT	132745	2/80
30	254	15	277	10			FAZ-B30/1-RT	132746	2/80
32	254	15	277	10			FAZ-B32/1-RT	132747	2/80
35	254	15	240	10			FAZ-B35/1-RT	132748	2/80
40	254	15	240	10			FAZ-B40/1-RT	132749	2/80
50	240	15	240	10			FAZ-B50/1-RT	190795	2/80
63	240	15	240	10			FAZ-B63/1-RT	190796	2/80

SG56712



2-poles

1	440	15	480Y/277	10	SWD	AWG 18	FAZ-B1/2-RT	132750	1/40
1,5	440	15	480Y/277	10	SWD	AWG 18	FAZ-B1,5/2-RT	132751	1/40
2	440	15	480Y/277	10	SWD	AWG 18	FAZ-B2/2-RT	132752	1/40
3	440	15	480Y/277	10	SWD	AWG 18	FAZ-B3/2-RT	132753	1/40
4	440	15	480Y/277	10	SWD	AWG 18	FAZ-B4/2-RT	132754	1/40
5	440	15	480Y/277	10	SWD	AWG 18	FAZ-B5/2-RT	132755	1/40
6	440	15	480Y/277	10	SWD	AWG 18	FAZ-B6/2-RT	132756	1/40
7	440	15	480Y/277	10	SWD	AWG 18	FAZ-B7/2-RT	132757	1/40
8	440	15	480Y/277	10	SWD	AWG 16	FAZ-B8/2-RT	132758	1/40
10	440	15	480Y/277	10	SWD	AWG 16	FAZ-B10/2-RT	132759	1/40
13	440	15	480Y/277	10	SWD		FAZ-B13/2-RT	132760	1/40
15	440	15	480Y/277	14	SWD		FAZ-B15/2-RT	132761	1/40
16	440	15	480Y/277	14	SWD		FAZ-B16/2-RT	132762	1/40
20	440	15	480Y/277	14	SWD		FAZ-B20/2-RT	132763	1/40
25	440	15	480Y/277	14			FAZ-B25/2-RT	132764	1/40
30	440	15	480Y/277	10			FAZ-B30/2-RT	132765	1/40
32	440	15	480Y/277	10			FAZ-B32/2-RT	132766	1/40
35	440	15	240	10			FAZ-B35/2-RT	132767	1/40
40	440	15	240	10			FAZ-B40/2-RT	132768	1/40
50	415	15	240	10			FAZ-B50/2-RT	190799	1/40
63	415	15	240	10			FAZ-B63/2-RT	190800	1/40

FAZ - Technical Data

Rated current I_n (A)	Rated voltage acc. to IEC/EN 60947-2 (V)	Breaking capacity acc. to IEC/EN 60947-2 (kA)	Rated voltage acc. to UL489 (V)	Breaking capacity acc. to UL489 (kA)	SWD	NFPA 79	Type Designation	Article No.	Units per package
----------------------------	--	--	--	--	-----	---------	---------------------	-------------	----------------------

SG57012



3-poles

1	440	15	480Y/277	10	SWD	AWG 18	FAZ-B1/3-RT	132769	1/28
1,5	440	15	480Y/277	10	SWD	AWG 18	FAZ-B1,5/3-RT	132770	1/28
2	440	15	480Y/277	10	SWD	AWG 18	FAZ-B2/3-RT	132771	1/28
3	440	15	480Y/277	10	SWD	AWG 18	FAZ-B3/3-RT	132772	1/28
4	440	15	480Y/277	10	SWD	AWG 18	FAZ-B4/3-RT	132773	1/28
5	440	15	480Y/277	10	SWD	AWG 18	FAZ-B5/3-RT	132774	1/28
6	440	15	480Y/277	10	SWD	AWG 18	FAZ-B6/3-RT	132775	1/28
7	440	15	480Y/277	10	SWD	AWG 18	FAZ-B7/3-RT	132776	1/28
8	440	15	480Y/277	10	SWD	AWG 16	FAZ-B8/3-RT	132777	1/28
10	440	15	480Y/277	10	SWD	AWG 16	FAZ-B10/3-RT	132778	1/28
13	440	15	480Y/277	10	SWD		FAZ-B13/3-RT	132779	1/28
15	440	15	480Y/277	14	SWD		FAZ-B15/3-RT	132780	1/28
16	440	15	480Y/277	14	SWD		FAZ-B16/3-RT	132781	1/28
20	440	15	480Y/277	14	SWD		FAZ-B20/3-RT	132782	1/28
25	440	15	480Y/277	14			FAZ-B25/3-RT	132783	1/28
30	440	15	480Y/277	10			FAZ-B30/3-RT	132784	1/28
32	440	15	480Y/277	10			FAZ-B32/3-RT	132785	1/28
35	440	15	240	10			FAZ-B35/3-RT	132786	1/28
40	440	15	240	10			FAZ-B40/3-RT	132787	1/28
50	415	15	240	10			FAZ-B50/3-RT	190803	1/28
63	415	15	240	10			FAZ-B63/3-RT	190804	1/28

wa_sg01017



4-poles

1	440	15	480Y/277	10		AWG18	FAZ-B1/4-RT	190844	1/20
1,5	440	15	480Y/277	10		AWG18	FAZ-B1,5/4-RT	190845	1/20
2	440	15	480Y/277	10		AWG18	FAZ-B2/4-RT	190846	1/20
3	440	15	480Y/277	10		AWG18	FAZ-B3/4-RT	190847	1/20
4	440	15	480Y/277	10		AWG18	FAZ-B4/4-RT	190848	1/20
5	440	15	480Y/277	10		AWG18	FAZ-B5/4-RT	190849	1/20
6	440	15	480Y/277	10		AWG18	FAZ-B6/4-RT	190850	1/20
7	440	15	480Y/277	10		AWG18	FAZ-B7/4-RT	190851	1/20
8	440	15	480Y/277	10		AWG16	FAZ-B8/4-RT	190852	1/20
10	440	15	480Y/277	10		AWG16	FAZ-B10/4-RT	190853	1/20
13	440	15	480Y/277	10			FAZ-B13/4-RT	190854	1/20
15	440	15	480Y/277	14			FAZ-B15/4-RT	190855	1/20
16	440	15	480Y/277	14			FAZ-B16/4-RT	190856	1/20
20	440	15	480Y/277	14			FAZ-B20/4-RT	190857	1/20
25	440	15	480Y/277	14			FAZ-B25/4-RT	190858	1/20
30	440	15	480Y/277	10			FAZ-B30/4-RT	190859	1/20
32	440	15	480Y/277	10			FAZ-B32/4-RT	190860	1/20
35	440	15	240	10			FAZ-B35/4-RT	190861	1/20
40	440	15	240	10			FAZ-B40/4-RT	190862	1/20
50	415	15	240	10			FAZ-B50/4-RT	190805	1/20
63	415	15	240	10			FAZ-B63/4-RT	190806	1/20

Rated current I_n (A)	Rated voltage acc. to IEC/EN 60947-2 (V)	Breaking capacity acc. to IEC/EN 60947-2 (kA)	Rated voltage acc. to UL489 (V)	Breaking capacity acc. to UL489 (kA)	SWD	NFPA 79	Type Designation	Article No.	Units per package
----------------------------	--	--	--	--	-----	---------	---------------------	-------------	----------------------

Characteristic C

SG56412



1-pole

0.5	254	15	277	10	SWD	AWG 18	FAZ-C0,5/1-RT	102117	2/80
1	254	15	277	10	SWD	AWG 18	FAZ-C1/1-RT	102118	2/80
1,5	254	15	277	10	SWD	AWG 18	FAZ-C1,5/1-RT	102119	2/80
2	254	15	277	10	SWD	AWG 18	FAZ-C2/1-RT	102120	2/80
3	254	15	277	10	SWD	AWG 18	FAZ-C3/1-RT	102121	2/80
4	254	15	277	10	SWD	AWG 18	FAZ-C4/1-RT	102122	2/80
5	254	15	277	10	SWD	AWG 18	FAZ-C5/1-RT	102123	2/80
6	254	15	277	10	SWD	AWG 18	FAZ-C6/1-RT	102124	2/80
7	254	15	277	10	SWD	AWG 18	FAZ-C7/1-RT	102125	2/80
8	254	15	277	10	SWD	AWG 16	FAZ-C8/1-RT	102126	2/80
10	254	15	277	10	SWD	AWG 16	FAZ-C10/1-RT	102127	2/80
13	254	15	277	10	SWD		FAZ-C13/1-RT	102128	2/80
15	254	15	277	14	SWD		FAZ-C15/1-RT	102129	2/80
16	254	15	277	14	SWD		FAZ-C16/1-RT	102130	2/80
20	254	15	277	14	SWD		FAZ-C20/1-RT	102131	2/80
25	254	15	277	14			FAZ-C25/1-RT	102132	2/80
30	254	15	277	10			FAZ-C30/1-RT	102133	2/80
32	254	15	277	10			FAZ-C32/1-RT	102134	2/80
35	254	15	240	10			FAZ-C35/1-RT	102135	2/80
40	254	15	240	10			FAZ-C40/1-RT	102136	2/80
50	240	15	240	10			FAZ-C50/1-RT	190797	2/80
63	240	15	240	10			FAZ-C63/1-RT	190798	2/80

SG56712



2-poles

0.5	440	15	480Y/277	10	SWD	AWG 18	FAZ-C0,5/2-RT	102197	1/40
1	440	15	480Y/277	10	SWD	AWG 18	FAZ-C1/2-RT	102198	1/40
1,5	440	15	480Y/277	10	SWD	AWG 18	FAZ-C1,5/2-RT	102199	1/40
2	440	15	480Y/277	10	SWD	AWG 18	FAZ-C2/2-RT	102200	1/40
3	440	15	480Y/277	10	SWD	AWG 18	FAZ-C3/2-RT	102201	1/40
4	440	15	480Y/277	10	SWD	AWG 18	FAZ-C4/2-RT	102202	1/40
5	440	15	480Y/277	10	SWD	AWG 18	FAZ-C5/2-RT	102203	1/40
6	440	15	480Y/277	10	SWD	AWG 18	FAZ-C6/2-RT	102204	1/40
7	440	15	480Y/277	10	SWD	AWG 18	FAZ-C7/2-RT	102205	1/40
8	440	15	480Y/277	10	SWD	AWG 16	FAZ-C8/2-RT	102206	1/40
10	440	15	480Y/277	10	SWD	AWG 16	FAZ-C10/2-RT	102207	1/40
13	440	15	480Y/277	10	SWD		FAZ-C13/2-RT	102208	1/40
15	440	15	480Y/277	14	SWD		FAZ-C15/2-RT	102209	1/40
16	440	15	480Y/277	14	SWD		FAZ-C16/2-RT	102210	1/40
20	440	15	480Y/277	14	SWD		FAZ-C20/2-RT	102211	1/40
25	440	15	480Y/277	14			FAZ-C25/2-RT	102212	1/40
30	440	15	480Y/277	10			FAZ-C30/2-RT	102213	1/40
32	440	15	480Y/277	10			FAZ-C32/2-RT	102214	1/40
35	440	15	240	10			FAZ-C35/2-RT	102215	1/40
40	440	15	240	10			FAZ-C40/2-RT	102216	1/40
50	415	15	240	10			FAZ-C50/2-RT	190801	1/40
63	415	15	240	10			FAZ-C63/2-RT	190802	1/40

2.244 Miniature Circuit Breakers

FAZ - Technical Data

Rated current I_n (A)	Rated voltage acc. to IEC/EN 60947-2 (V)	Breaking capacity acc. to IEC/EN 60947-2 (kA)	Rated voltage acc. to UL489 (V)	Breaking capacity acc. to UL489 (kA)	SWD	NFPA 79	Type Designation	Article No.	Units per package
----------------------------	--	--	--	--	-----	---------	---------------------	-------------	----------------------

SG57012



3-poles

0.5	440	15	480Y/277	10	SWD	AWG 18	FAZ-C0,5/3-RT	102277	1/28
1	440	15	480Y/277	10	SWD	AWG 18	FAZ-C1/3-RT	102278	1/28
1,5	440	15	480Y/277	10	SWD	AWG 18	FAZ-C1,5/3-RT	102279	1/28
2	440	15	480Y/277	10	SWD	AWG 18	FAZ-C2/3-RT	102280	1/28
3	440	15	480Y/277	10	SWD	AWG 18	FAZ-C3/3-RT	102281	1/28
4	440	15	480Y/277	10	SWD	AWG 18	FAZ-C4/3-RT	102282	1/28
5	440	15	480Y/277	10	SWD	AWG 18	FAZ-C5/3-RT	102283	1/28
6	440	15	480Y/277	10	SWD	AWG 18	FAZ-C6/3-RT	102284	1/28
7	440	15	480Y/277	10	SWD	AWG 18	FAZ-C7/3-RT	102285	1/28
8	440	15	480Y/277	10	SWD	AWG 16	FAZ-C8/3-RT	102286	1/28
10	440	15	480Y/277	10	SWD	AWG 16	FAZ-C10/3-RT	102287	1/28
13	440	15	480Y/277	10	SWD		FAZ-C13/3-RT	102288	1/28
15	440	15	480Y/277	14	SWD		FAZ-C15/3-RT	102289	1/28
16	440	15	480Y/277	14	SWD		FAZ-C16/3-RT	102290	1/28
20	440	15	480Y/277	14	SWD		FAZ-C20/3-RT	102291	1/28
25	440	15	480Y/277	14			FAZ-C25/3-RT	102292	1/28
30	440	15	480Y/277	10			FAZ-C30/3-RT	102293	1/28
32	440	15	480Y/277	10			FAZ-C32/3-RT	102294	1/28
35	440	15	240	10			FAZ-C35/3-RT	102295	1/28
40	440	15	240	10			FAZ-C40/3-RT	102296	1/28
50	415	15	240	10			FAZ-C50/3-RT	190807	1/28
63	415	15	240	10			FAZ-C63/3-RT	190808	1/28

wa_sg01017



4-poles

0.5	440	15	480Y/277	10		AWG18	FAZ-C0,5/4-RT	190863	1/20
1	440	15	480Y/277	10		AWG18	FAZ-C1/4-RT	190864	1/20
1,5	440	15	480Y/277	10		AWG18	FAZ-C1,5/4-RT	190865	1/20
2	440	15	480Y/277	10		AWG18	FAZ-C2/4-RT	190866	1/20
3	440	15	480Y/277	10		AWG18	FAZ-C3/4-RT	190867	1/20
4	440	15	480Y/277	10		AWG18	FAZ-C4/4-RT	190868	1/20
5	440	15	480Y/277	10		AWG18	FAZ-C5/4-RT	190869	1/20
6	440	15	480Y/277	10		AWG18	FAZ-C6/4-RT	190870	1/20
7	440	15	480Y/277	10		AWG18	FAZ-C7/4-RT	190871	1/20
8	440	15	480Y/277	10		AWG16	FAZ-C8/4-RT	190872	1/20
10	440	15	480Y/277	10		AWG16	FAZ-C10/4-RT	190873	1/20
13	440	15	480Y/277	10			FAZ-C13/4-RT	190874	1/20
15	440	15	480Y/277	14			FAZ-C15/4-RT	190875	1/20
16	440	15	480Y/277	14			FAZ-C16/4-RT	190876	1/20
20	440	15	480Y/277	14			FAZ-C20/4-RT	190877	1/20
25	440	15	480Y/277	14			FAZ-C25/4-RT	190878	1/20
30	440	15	480Y/277	10			FAZ-C30/4-RT	190879	1/20
32	440	15	480Y/277	10			FAZ-C32/4-RT	190880	1/20
35	440	15	240	10			FAZ-C35/4-RT	190881	1/20
40	440	15	240	10			FAZ-C40/4-RT	190882	1/20
50	415	15	240	10			FAZ-C50/4-RT	190809	1/20
63	415	15	240	10			FAZ-C63/4-RT	190810	1/20

Rated current I_n (A)	Rated voltage acc. to IEC/EN 60947-2 (V)	Breaking capacity acc. to IEC/EN 60947-2 (kA)	Rated voltage acc. to UL489 (V)	Breaking capacity acc. to UL489 (kA)	SWD	NFPA 79	Type Designation	Article No.	Units per package
----------------------------	--	--	--	--	-----	---------	---------------------	-------------	----------------------

Characteristic D

SG56412



1-pole

0.5	240	15	277	10	SWD	AWG 18	FAZ-D0,5/1-RT	102137	2/80
1	240	15	277	10	SWD	AWG 18	FAZ-D1/1-RT	102138	2/80
1,5	240	15	277	10	SWD	AWG 18	FAZ-D1,5/1-RT	102139	2/80
2	240	15	277	10	SWD	AWG 18	FAZ-D2/1-RT	102140	2/80
3	240	15	277	10	SWD	AWG 18	FAZ-D3/1-RT	102141	2/80
4	240	15	277	10	SWD	AWG 18	FAZ-D4/1-RT	102142	2/80
5	240	15	277	10	SWD	AWG 18	FAZ-D5/1-RT	102143	2/80
6	240	15	277	10	SWD	AWG 18	FAZ-D6/1-RT	102144	2/80
7	240	15	277	10	SWD	AWG 18	FAZ-D7/1-RT	102145	2/80
8	240	15	277	10	SWD	AWG 16	FAZ-D8/1-RT	102146	2/80
10	240	15	277	10	SWD	AWG 16	FAZ-D10/1-RT	102147	2/80
13	240	15	277	14	SWD		FAZ-D13/1-RT	102148	2/80
15	240	15	277	14	SWD		FAZ-D15/1-RT	102149	2/80
16	240	15	277	14	SWD		FAZ-D16/1-RT	102150	2/80
20	240	15	277	14	SWD		FAZ-D20/1-RT	102151	2/80
25	240	15	277	10			FAZ-D25/1-RT	102152	2/80
30	240	15	277	10			FAZ-D30/1-RT	102153	2/80
32	240	15	277	10			FAZ-D32/1-RT	102154	2/80
35	240	15	240	10			FAZ-D35/1-RT	102155	2/80
40	240	15	240	10			FAZ-D40/1-RT	102156	2/80

SG56712



2-poles

0.5	415	15	480Y/277	10	SWD	AWG 18	FAZ-D0,5/2-RT	102217	1/40
1	415	15	480Y/277	10	SWD	AWG 18	FAZ-D1/2-RT	102218	1/40
1,5	415	15	480Y/277	10	SWD	AWG 18	FAZ-D1,5/2-RT	102219	1/40
2	415	15	480Y/277	10	SWD	AWG 18	FAZ-D2/2-RT	102220	1/40
3	415	15	480Y/277	10	SWD	AWG 18	FAZ-D3/2-RT	102221	1/40
4	415	15	480Y/277	10	SWD	AWG 18	FAZ-D4/2-RT	102222	1/40
5	415	15	480Y/277	10	SWD	AWG 18	FAZ-D5/2-RT	102223	1/40
6	415	15	480Y/277	10	SWD	AWG 18	FAZ-D6/2-RT	102224	1/40
7	415	15	480Y/277	10	SWD	AWG 18	FAZ-D7/2-RT	102225	1/40
8	415	15	480Y/277	10	SWD	AWG 16	FAZ-D8/2-RT	102226	1/40
10	415	15	480Y/277	10	SWD	AWG 16	FAZ-D10/2-RT	102227	1/40
13	415	15	480Y/277	14	SWD		FAZ-D13/2-RT	102228	1/40
15	415	15	480Y/277	14	SWD		FAZ-D15/2-RT	102229	1/40
16	415	15	480Y/277	14	SWD		FAZ-D16/2-RT	102230	1/40
20	415	15	480Y/277	14	SWD		FAZ-D20/2-RT	102231	1/40
25	415	15	480Y/277	10			FAZ-D25/2-RT	102232	1/40
30	415	15	480Y/277	10			FAZ-D30/2-RT	102233	1/40
32	415	15	480Y/277	10			FAZ-D32/2-RT	102234	1/40
35	415	15	240	10			FAZ-D35/2-RT	102235	1/40
40	415	15	240	10			FAZ-D40/2-RT	102236	1/40

FAZ - Technical Data

Rated current I_n (A)	Rated voltage acc. to IEC/EN 60947-2 (V)	Breaking capacity acc. to IEC/EN 60947-2 (kA)	Rated voltage acc. to UL489 (V)	Breaking capacity acc. to UL489 (kA)	SWD	NFPA 79	Type Designation	Article No.	Units per package
----------------------------	--	--	--	--	-----	---------	---------------------	-------------	----------------------

SG57012



3-poles

0.5	415	15	480Y/277	10	SWD	AWG 18	FAZ-D0,5/3-RT	102297	1/28
1	415	15	480Y/277	10	SWD	AWG 18	FAZ-D1/3-RT	102298	1/28
1,5	415	15	480Y/277	10	SWD	AWG 18	FAZ-D1,5/3-RT	102299	1/28
2	415	15	480Y/277	10	SWD	AWG 18	FAZ-D2/3-RT	102300	1/28
3	415	15	480Y/277	10	SWD	AWG 18	FAZ-D3/3-RT	102301	1/28
4	415	15	480Y/277	10	SWD	AWG 18	FAZ-D4/3-RT	102302	1/28
5	415	15	480Y/277	10	SWD	AWG 18	FAZ-D5/3-RT	102303	1/28
6	415	15	480Y/277	10	SWD	AWG 18	FAZ-D6/3-RT	102304	1/28
7	415	15	480Y/277	10	SWD	AWG 18	FAZ-D7/3-RT	102305	1/28
8	415	15	480Y/277	10	SWD	AWG 16	FAZ-D8/3-RT	102306	1/28
10	415	15	480Y/277	10	SWD	AWG 16	FAZ-D10/3-RT	102307	1/28
13	415	15	480Y/277	14	SWD		FAZ-D13/3-RT	102308	1/28
15	415	15	480Y/277	14	SWD		FAZ-D15/3-RT	102309	1/28
16	415	15	480Y/277	14	SWD		FAZ-D16/3-RT	102310	1/28
20	415	15	480Y/277	14	SWD		FAZ-D20/3-RT	102311	1/28
25	415	15	480Y/277	10			FAZ-D25/3-RT	102312	1/28
30	415	15	480Y/277	10			FAZ-D30/3-RT	102313	1/28
32	415	15	480Y/277	10			FAZ-D32/3-RT	102314	1/28
35	415	15	240	10			FAZ-D35/3-RT	102315	1/28
40	415	15	240	10			FAZ-D40/3-RT	102316	1/28

wa_sg01017



4-poles

0.5	415	15	480Y/277	10		AWG18	FAZ-D0,5/4-RT	190883	1/20
1	415	15	480Y/277	10		AWG18	FAZ-D1/4-RT	190884	1/20
1,5	415	15	480Y/277	10		AWG18	FAZ-D1,5/4-RT	190885	1/20
2	415	15	480Y/277	10		AWG18	FAZ-D2/4-RT	190886	1/20
3	415	15	480Y/277	10		AWG18	FAZ-D3/4-RT	190887	1/20
4	415	15	480Y/277	10		AWG18	FAZ-D4/4-RT	190888	1/20
5	415	15	480Y/277	10		AWG18	FAZ-D5/4-RT	190889	1/20
6	415	15	480Y/277	10		AWG18	FAZ-D6/4-RT	190890	1/20
7	415	15	480Y/277	10		AWG18	FAZ-D7/4-RT	190891	1/20
8	415	15	480Y/277	10		AWG16	FAZ-D8/4-RT	190892	1/20
10	415	15	480Y/277	10		AWG16	FAZ-D10/4-RT	190893	1/20
13	415	15	480Y/277	10			FAZ-D13/4-RT	190894	1/20
15	415	15	480Y/277	14			FAZ-D15/4-RT	190895	1/20
16	415	15	480Y/277	14			FAZ-D16/4-RT	190896	1/20
20	415	15	480Y/277	14			FAZ-D20/4-RT	190897	1/20
25	415	15	480Y/277	14			FAZ-D25/4-RT	190898	1/20
30	415	15	480Y/277	10			FAZ-D30/4-RT	190811	1/20
32	415	15	480Y/277	10			FAZ-D32/4-RT	190812	1/20
35	415	15	240	10			FAZ-D35/4-RT	190813	1/20
40	415	15	240	10			FAZ-D40/4-RT	190814	1/20

Miniature Circuit Breakers FAZ-...-NA, -RT

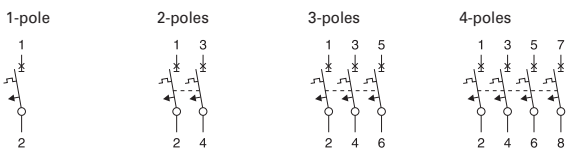
Accessories:

Auxiliary switch for subsequent installation	Z-IHK-NA	113895
Tripping signal contact for subsequent installation	Z-NHK	248434
Shunt trip release	FAZ-XAA-NA12-110V AC	102037
	FAZ-XAA-NA110-415V AC	102036
Switching interlock	Z-IS/SPE-1TE	274418

Technical Data IEC/EN

		FAZ-...-NA, -RT
Productstandard		IEC/EN 60947-2
Number of poles		1, 2, 3, 4
Mechanical		
Device width		17.7 mm (1-pole), 35.4 mm (2-poles), 53.1 mm (3-poles), 70.8 mm (4-poles)
Frame size		45 mm
Device height		105 mm
Device depth		60 mm
Terminals		lift terminal / ring-tongue
Terminal capacity rigid solid/stranded wire		1-25 mm ²
Terminal screw		M5 (with slotted screw Pozidriv PZ2)
Fastening torque of terminal screws		max. 2.4 Nm
Degree of protection (DIN VDE 0470)		
Surface mounted		IP20
Built-in behind panel		IP40
Contact position indicator		red / green
Electrical		
Rated voltage	U_n	Only characteristic B, C (up to 40 A): 254/440 V AC For characteristic B, C (50 and 63 A) and characteristic D: 240/415 V AC
Rated current	I_n	0.5, 1, 1.5, 2, 3, 4, 5, 6, 7, 8, 10, 13, 15, 16, 20, 25, 30, 32, 35, 40, 50, 63 A
Rated insulation voltage	U_i	440 V AC
Rated impulse withstand voltage	U_{imp}	4 kV (1.2/50) µsec
Tripping characteristic		
Conventional non-tripping current	I_{nt}	$I_{nt} = 1.05 I_n$
Conventional tripping current	I_t	$I_t = 1.30 I_n$
Reference temperature		40 °C
Temperature factor		0.5%/K
Instantaneous tripping current	I_{mt}	Type B: $3 I_n < I_{mt} = 5 I_n \cdot t (I_{mt}) < 0.1 \text{ sec}$ Type C: $5 I_n < I_{mt} = 10 I_n \cdot t (I_{mt}) < 0.1 \text{ sec}$ Type D: $10 I_n < I_{mt} = 20 I_n \cdot t (I_{mt}) < 0.1 \text{ sec}$
Rated short-circuit breaking capacity	I_{cu}	15 kA
Service short circuit capacity	I_{cs}	7.5 kA
Selectivity class		3 (acc. to EN 60898)
Number of electrical operations		> 1,500
Number of mechanical operations		> 10,000
Climatic conditions		acc. to IEC 68-2 (25..55°C / 90..95% RH)
Operating temperature range		-40°C up to +75°C
Operating utility frequency		50/60 Hz

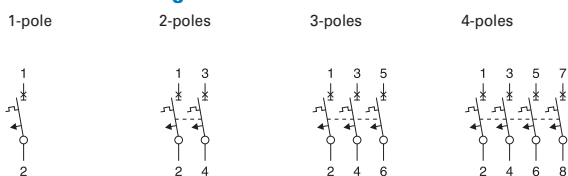
Connection diagram



Technical Data UL

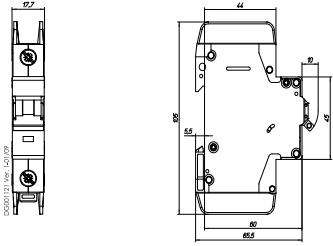
		FAZ-...-NA, -RT
Productstandard		UL 489, CSA C22.2 No. 5-02
Number of poles		1, 2, 3, 4
Mechanical		
Device width		0.697 in. (1-pole), 1.394 in. (2-poles), 2.090 in. (3-poles), 2.788 in. (4-poles)
Frame size		1.772 in.
Device height		4.134 in.
Device depth		2.362 in.
Terminals		lift terminal / ring-tongue
Terminal capacity rigid solid/stranded wire		1 Wire: #18-6 AWG (Cu only) 2 Wires: #18-10 AWG (Cu only)
Terminal screw		M5 (with slotted screw Pozidriv PZ2)
Fastening torque of terminal screws		#18-12 AWG: 2.4 Nm (21 lb-in) #10-8 AWG: 2.8 Nm (25 lb-in) #6 AWG: 4 Nm (36 lb-in)
Contact position indicator		red / green
Electrical		
Rated voltage	U_n	0.5-32 A: 480Y/277 V AC, 35-63 A: 240 V AC
Rated current	I_n	0.5, 1, 1.5, 2, 3, 4, 5, 6, 7, 8, 10, 13, 15, 16, 20, 25, 30, 32, 35, 40, 50 (not D), 63 (not D) A
Tripping characteristic		
Conventional non-tripping current		$I_{nt} = 1,00 I_n$
Conventional tripping current		$I_t = 1,35 I_n$
Reference temperature		40 °C
Temperature factor		0.5%/K
Instantaneous tripping current	I_{mt}	Type B: $3 I_n < I_{mt} = 5 I_n \cdot t (I_{mt}) < 0.1 \text{ sec}$ Type C: $5 I_n < I_{mt} = 10 I_n \cdot t (I_{mt}) < 0.1 \text{ sec}$ Type D: $10 I_n < I_{mt} = 20 I_n \cdot t (I_{mt}) < 0.1 \text{ sec}$
Current interrupting rating		
10 kA		B0.5-13A, B30-63A, C0.5-13A, C30-63A, D0.5-10A, D25-40A
14 kA		B15-25A, C15-25A, D13-20A
Current-Limiting		
High interrupt current at 240 V / 10 kA		$I^2t = 42 \text{ kA}^2\text{s}$ and $I_{peak} = 6.2 \text{ kA}$
Intermediate interrupt current at 240 V / 5 kA		$I^2t = 24 \text{ kA}^2\text{s}$ and $I_{peak} = 4.2 \text{ kA}$
Threshold current at 240 V / 2.6 kA		$I^2t = 18 \text{ kA}^2\text{s}$ and $I_{peak} = 2.9 \text{ kA}$
High interrupt current at 480Y/277V / 10 kA		$I^2t = 60 \text{ kA}^2\text{s}$ and $I_{peak} = 6.2 \text{ kA}$
High interrupt current at 480Y/277V / 14 kA		$I^2t = 65 \text{ kA}^2\text{s}$ and $I_{peak} = 7.5 \text{ kA}$
Intermediate interrupt current at 480Y/277V / 5 kA		$I^2t = 36 \text{ kA}^2\text{s}$ and $I_{peak} = 4.6 \text{ kA}$
Threshold current at 480Y/277V / 2.08 kA		$I^2t = 15 \text{ kA}^2\text{s}$ and $I_{peak} = 2.2 \text{ kA}$
Selectivity class		3 (acc. to EN 60898)
Number of electrical operations		6,000
Number of mechanical operations		10,000
Climatic conditions		acc. to IEC 68-2 (25..55°C / 90..95% RH)
Operating temperature range		-5 °C up to +40 °C
Operating utility frequency		50/60 Hz (B, C, D up to 40 A) 60 Hz (50, 63 A)

Connection diagram

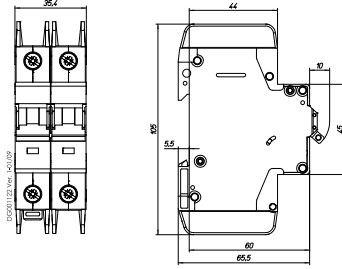


Dimensions (mm) FAZ-...-NA, -RT

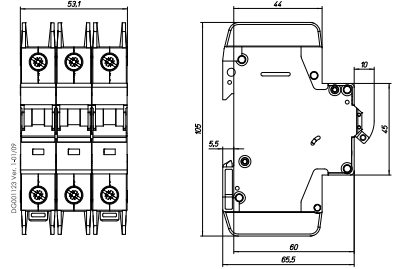
1-pole



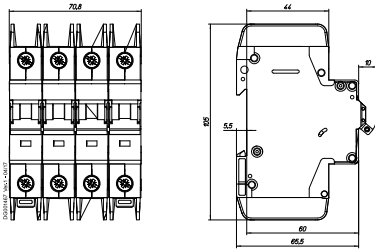
2-poles



3-poles

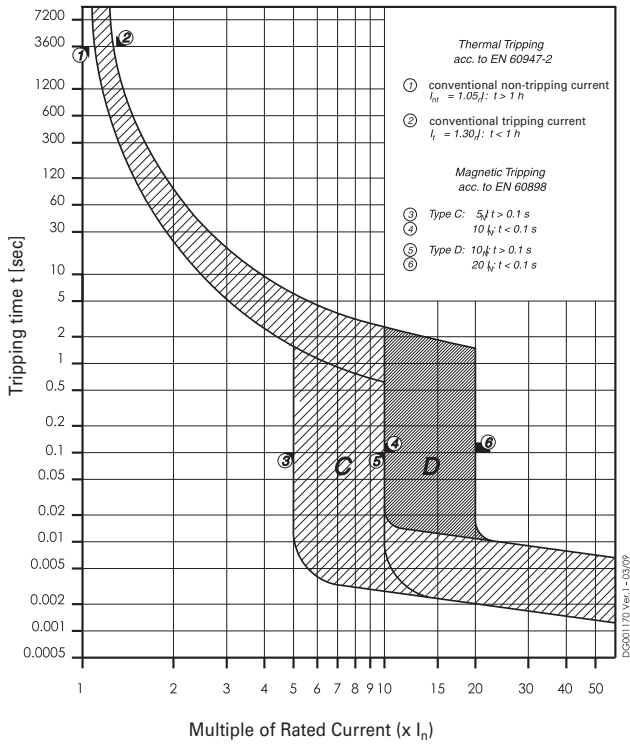


4-poles

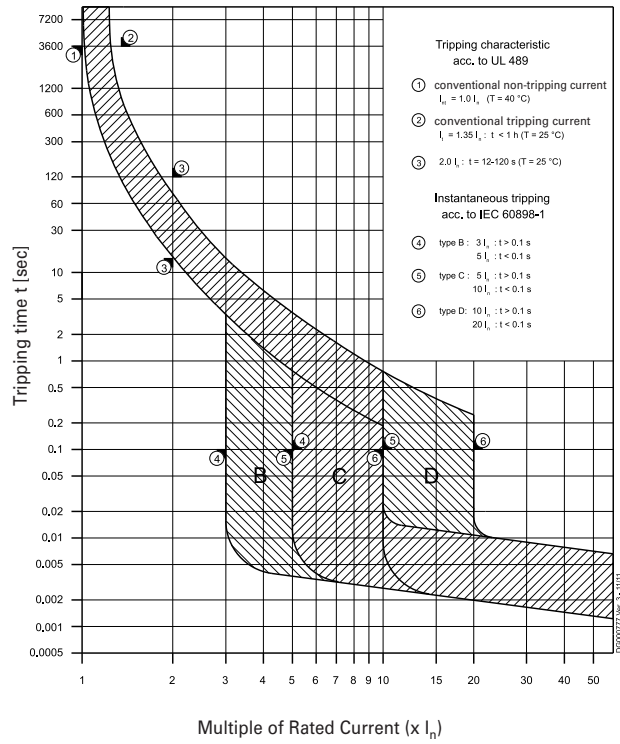


Tripping Characteristics FAZ-...-NA, -RT

Characteristics C and D - EN/IEC 60947-2



Characteristics B, C and D - UL 489



Internal Resistance FAZ-...-NA, -RT

Type B	
At room temperature (single pole)	
I_n [A]	R^* [mΩ]
1	1100
1.5	900
2	350
3	220
4	87
5	72
6	47
7	38
8	30
10	17
13	13
15	8.0
16	8.0
20	6.9
25	3.9
30	2.8
32	3.0
35	2.9
40	1.9
50	1.6
63	1.2

* 50 Hz

Type C	
At room temperature (single pole)	
I_n [A]	R^* [mΩ]
1	1100
1.5	580
2	350
3	130
4	87
5	60
6	32
7	28
8	19
10	14
13	13
15	8.0
16	8.0
20	6.9
25	3.9
30	2.8
32	3.0
35	2.5
40	1.9
50	1.6
63	1.2

* 50 Hz

Type D	
At room temperature (single pole)	
I_n [A]	R^* [mΩ]
1	800
1.5	490
2	260
3	130
4	87
5	58
6	32
7	28
8	19
10	14
13	11
15	8.0
16	8.0
20	4.9
25	3.5
30	2.5
32	2.6
35	2.5
40	1.8
50	1.7
63	1.2

* 50 Hz

Power Loss at I_n FAZ-...-NA, -RT

I_n [A]	Type B			
	1p P [W]	2p P [W]	3p P [W]	4p P [W]
1	1.2	2.2	3.6	4.8
1.5	2.2	4.4	6.6	8.8
2	1.4	2.8	4.2	5.6
3	2.2	4.4	6.6	8.8
4	1.4	2.8	4.2	5.6
5	1.9	3.8	5.7	7.6
6	1.8	3.6	5.4	7.2
7	2	4	6	8
8	2.1	4.2	6.3	8.4
10	1.8	3.6	5.4	7.2
13	2.5	5	7.5	10
15	2	4	6	8
16	2.3	4.6	6.9	9.2
20	3.3	6.6	9.9	13.2
25	2.8	5.6	8.4	11.2
30	3	6	9	12
32	3.5	7	10.5	14
35	4	8	12	16
40	3.4	6.8	10.2	13.6
50	4.4	8.8	13.2	17.6
63	5.5	11	16.5	22

* 50 Hz

I_n [A]	Type C			
	1p P [W]	2p P [W]	3p P [W]	4p P [W]
1	1.2	2.4	3.6	4.8
1.5	1.3	2.6	3.9	5.2
2	1.4	2.8	4.2	5.6
3	1.2	2.4	3.6	4.8
4	1.5	3	4.5	6
5	1.6	3.2	4.8	6.4
6	1.2	2.4	3.6	4.8
7	1.4	2.8	4.2	5.6
8	1.3	2.6	3.9	5.2
10	1.5	3	4.5	6
13	2.5	5	7.5	10
15	2	4	6	8
16	2.3	4.6	6.9	9.2
20	3.3	6.6	9.9	13.2
25	2.8	5.6	8.4	11.2
30	3	6	9	12
32	3.5	7	10.5	14
35	3.7	7.4	11.1	14.8
40	3.4	6.8	10.2	13.6
50	4.4	8.8	13.2	17.6
63	5.5	11	16.5	22

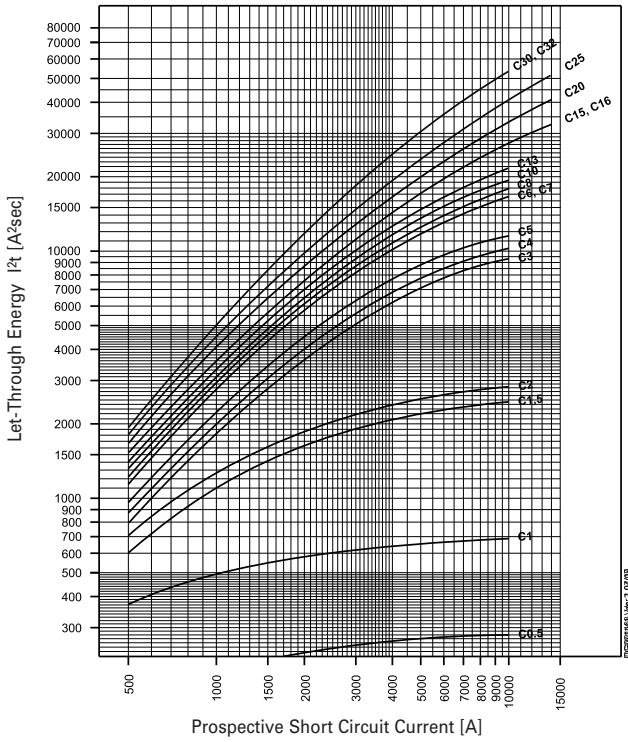
* 50 Hz

I_n [A]	Type D			
	1p P [W]	2p P [W]	3p P [W]	4p P [W]
1	0.8	1.6	2.4	3.2
1.5	1.1	2.2	3.3	4.4
2	1.1	2.2	3.3	4.8
3	1.2	2.4	3.6	4.8
4	1.5	3	4.5	6
5	1.5	3	5.5	6
6	1.2	2.4	3.6	4.8
7	1.4	2.8	4.2	5.6
8	1.3	2.6	3.9	5.2
10	1.5	3	4.5	6
13	2	4	6	8
15	2	4	6	8
16	2.3	4.6	6.9	9.2
20	2.2	4.4	6.6	8.8
25	2.5	5	7.5	10
30	2.7	5.4	8.1	10.8
32	3	6	9	12
35	3.8	7.6	11.4	15.2
40	3.1	6.2	9.3	12.4
50	4.9	9.8	14.7	19.6
63	5.5	11	16.5	22

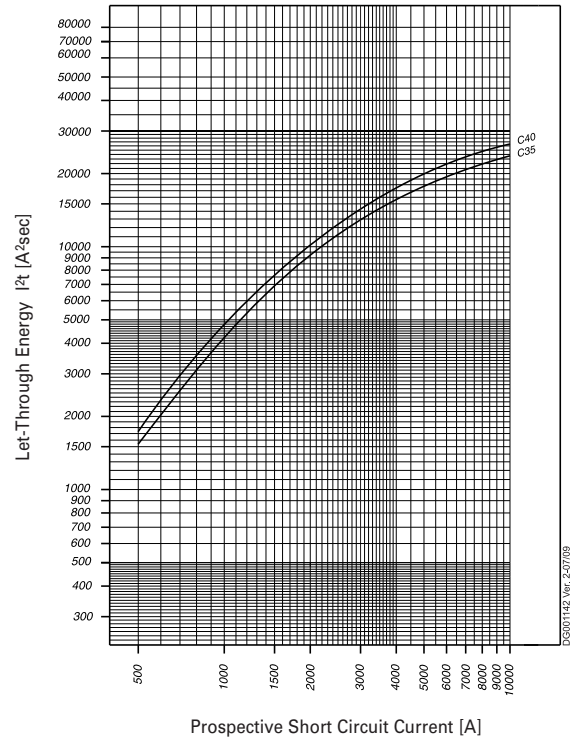
* 50 Hz

Maximum Let-Through Energy FAZ-...-NA, -RT

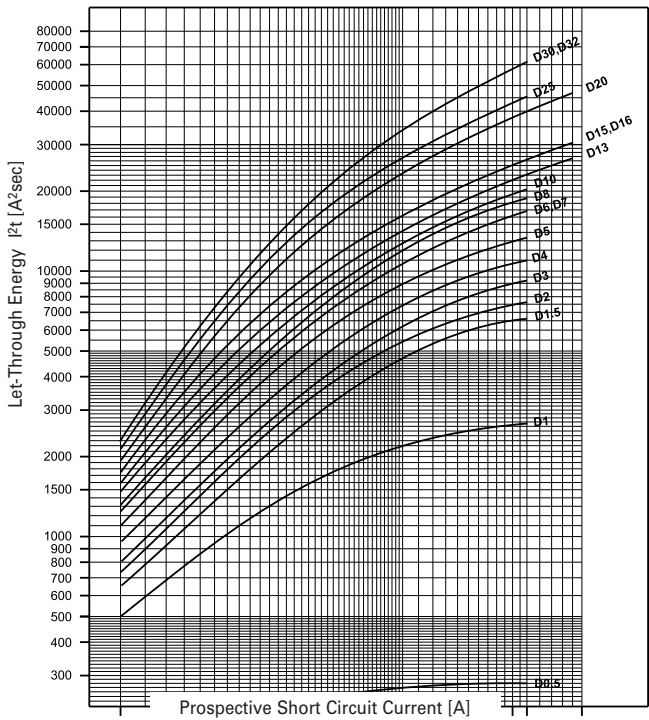
Type C (0.5 - 32 A), 277 V



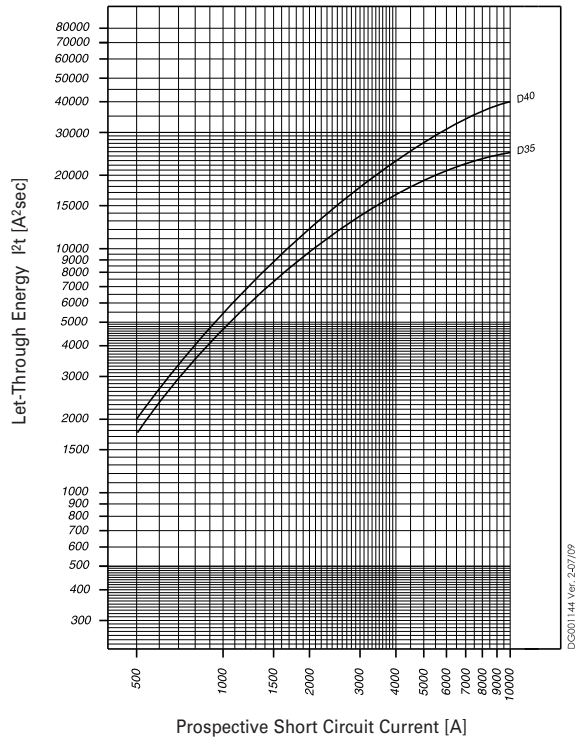
Type C (35 - 40 A), 240 V



Type D (0.5 - 32 A), 277 V

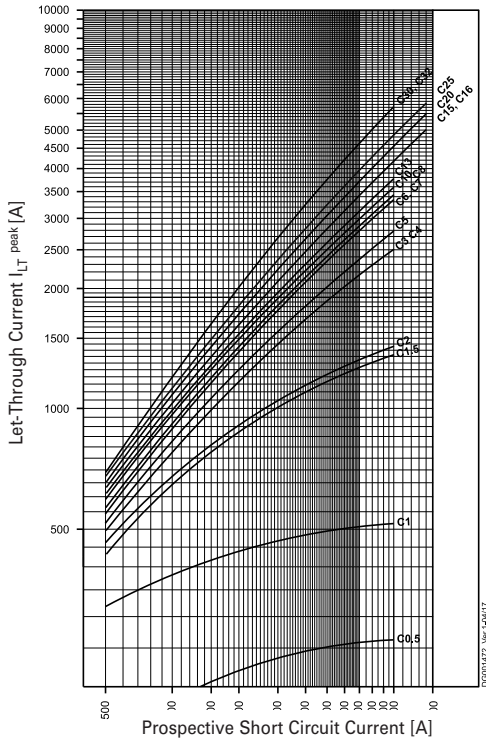


Type D (35 - 40 A), 240 V

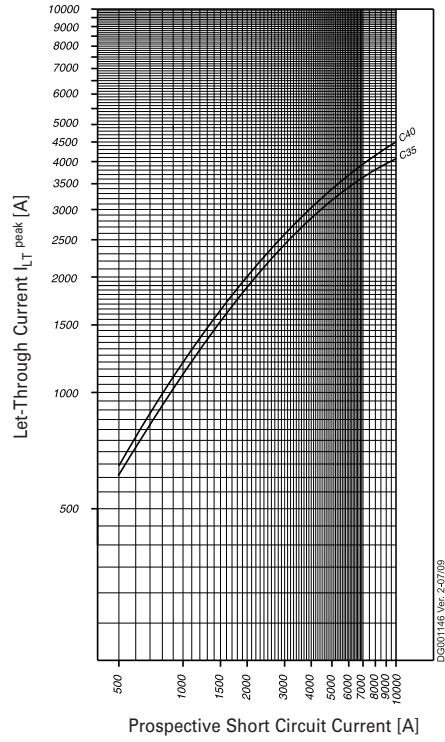


Maximum Let-Through Current FAZ-...-NA, -RT

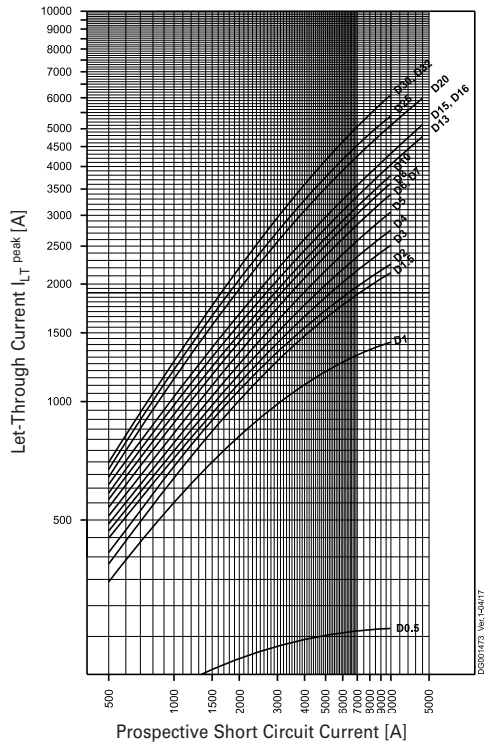
Type C (0.5 - 32 A), 277 V



Type C (35 - 40 A), 240 V



Type D (0.5 - 32 A), 277 V



Type D (35 - 40 A), 240 V

