

# N20 BS88 Special tag fuse links

## Product description

Eaton's Bussmann® series N20 British Standard fuse links are specifically designed for the protection of general industrial applications e.g. power distribution and cable protection.

## Standard features

- Good peak let-through current limitation
- 1:1:6 Selective coordination ratio between "minor" and "major" fuse
- gG characteristics for cable protection and general purpose applications
- Power loss values well within the limits of IEC 60269-2



*Powering Business Worldwide*

**Catalogue Symbol:**

- (amps)N20

**Technical data:**

- Rated voltage: 690 V a.c. / 400 V d.c.
- Rated current: 125 to 315 A
- Breaking capacity: 80 kA a.c. / 40 kA d.c.
- Breaking range and utilisation category: gG

**Standards/Approvals:**

- BS88-1
- IEC 60269-1
- RoHS compliant

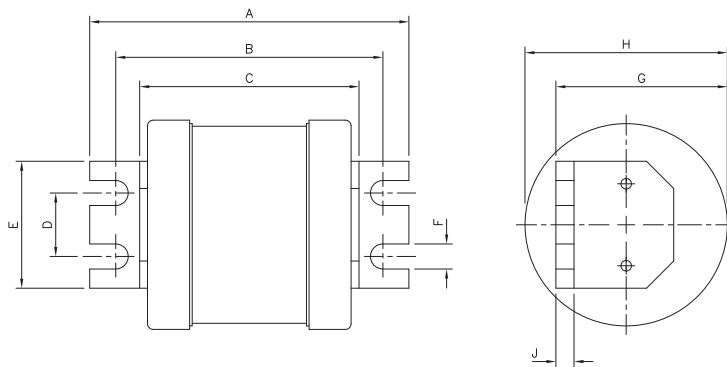
**Packaging:**

- MOQ: 1

**Table 1. Technical Data**

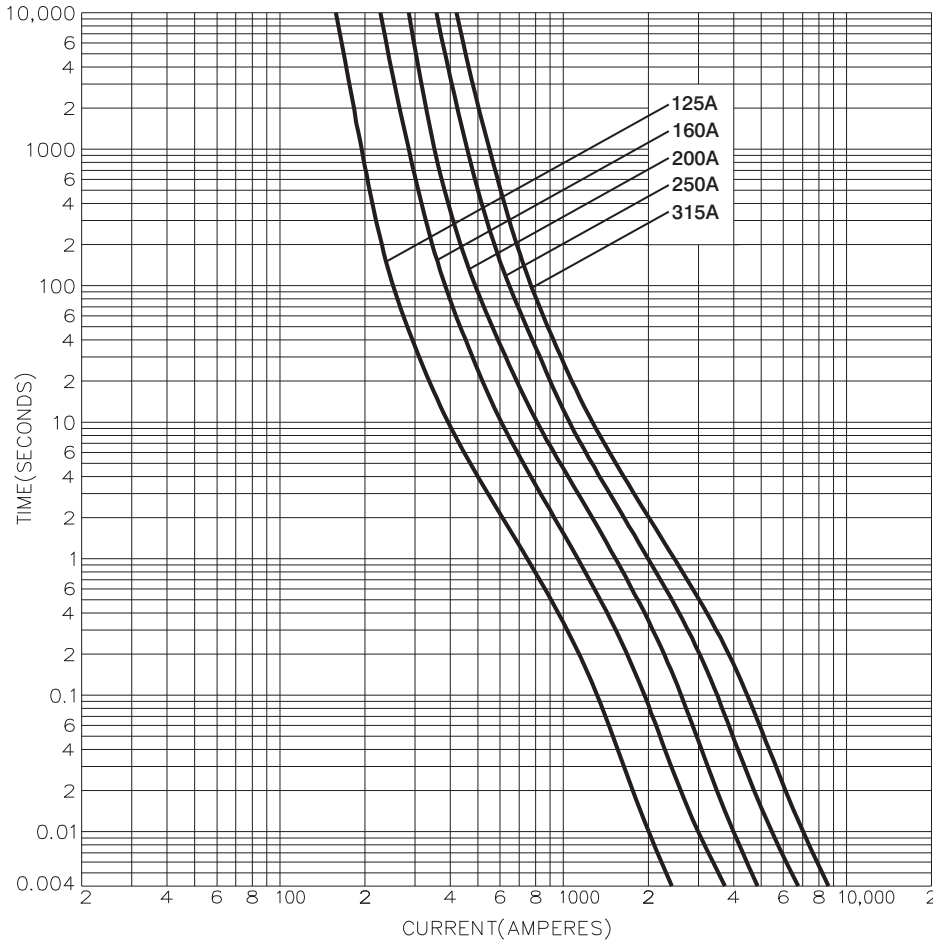
Part number	Rated voltage	Rated current (Amps)	Energy integrals I <sup>2</sup> t (A <sup>2</sup> S)				Watts loss W	Product Class
			Pre-arcing	Total at 415V	Total at 550V	Total at 660V		
125N20	690 V a.c. / 400 V d.c.	125	30,000	52,000	75,000	150,000	12	gG
160N20	690 V a.c. / 400 V d.c.	160	67,000	120,000	170,000	335,000	13	gG
200N20	690 V a.c. / 400 V d.c.	200	120,000	210,000	300,000	590,000	15	gG
250N20	690 V a.c. / 400 V d.c.	250	220,000	390,000	550,000	1,100,000	19	gG
315N20	690 V a.c. / 400 V d.c.	315	340,000	600,000	870,000	1,700,000	25	gG

**Dimensions - mm**



Catalogue numbers	A	B	C	D	E	F	G	H	J
125-315N20	110	93	75	22	45	9	49	49	6

**Time current curve**



Changes to the products, to the information contained in this document, and to prices are reserved; so are errors and omissions. Only order confirmations and technical documentation by Eaton is binding. Photos and pictures also do not warrant a specific layout or functionality. Their use in whatever form is subject to prior approval by Eaton. The same applies to Trademarks (especially Eaton, Moeller, and Cutler-Hammer). The Terms and Conditions of Eaton apply, as referenced on Eaton Internet pages and Eaton order confirmations.

**Eaton**  
 EMEA Headquarters  
 Route de la Longeraie 7  
 1110 Morges, Switzerland

Eaton Electrical Products Limited  
 Melton Road  
 Burton-on-the-Wolds  
 Leicestershire, LE12 5TH  
 United Kingdom

© 2017 Eaton  
 All Rights Reserved  
 PDF Only  
 Publication No. 4166  
 October 2017