



Introducing Eaton Performance Ring & Pinion Gear Sets

From the most well-known brand in automotive performance differentials, Eaton is proud to announce the availability of aftermarket ring & pinion sets. These high quality parts are made in the U.S.A. and are offered in two varieties, each with unique features:

Street



- Made from high quality 8620 or 4320 steel for long life
- CNC cut teeth for reduced stress and smooth engagement
- Computer controlled heat treat for durability
- Rolled splines for added tooth strength

Competition



- Made from high quality 9310 (PRO series) for high impact resistance
- CNC cut teeth for reduced stress and smooth engagement
- Computer controlled heat treat for durability
- Rolled splines for added tooth strength
- **Not for street use**



Super Finish (Optional)

Both Street and Competition gear sets can be ordered with an optional patented Super Finish process, which gives the gears a highly polished look, reduces friction and wear, improves oil retention, and eliminates the need for break-in. Up to 3-5% more horsepower can be achieved through reduced friction losses.



Powering Business Worldwide

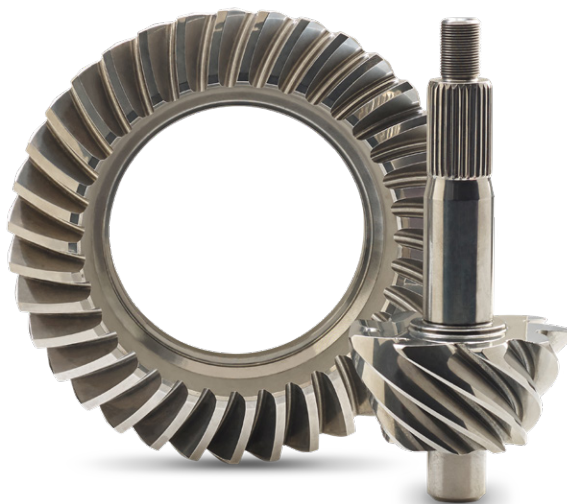
Eaton Performance Ring & Pinion

Eaton Performance ring & pinion gear sets are available in a wide range of axle ratios for many applications:

Axle Type	Ratio
Chrysler 8.7" IRS- Challenger / Charger / Magnum- Getrag H226 - 2010 & Newer-SRT8	3.23, 3.55, 4.10, 4.29
Chrysler 8.75" (489)	3.23, 3.55, 3.73, 3.91, 4.10, 4.30, 4.56, 4.86, 5.13
Dana 36 Corvette	3.54, 3.73
Dana 44 Corvette	4.11, 4.33, 4.56, 4.88
Dana 60	3.54, 4.88, 5.13, 5.38
Dana 60 PRO	4.10, 4.30, 4.56, 4.88, 5.38, 5.57, 5.86, 6.17
Ford 8"	2.80, 3.00, 3.25, 3.55, 3.80, 4.11, 4.62
Ford 8.8"	3.08, 3.55, 3.73, 3.90, 4.10, 4.30, 4.56, 4.71, 4.88, 5.13
Ford Super 8.8" IRS- 2015 Mustang	3.73, 3.91, 4.11
Ford 9" PRO	3.40, 3.50, 3.60, 3.70, 3.89, 4.11, 4.29, 4.57, 4.71, 4.86, 5.00, 5.14, 5.29, 5.43, 5.67, 5.83, 6.00, 6.20, 6.33, 6.50
Ford 9.5" PRO- 35 spline large stem pinion	3.25, 3.40, 3.50, 3.60, 3.70, 3.89, 4.11, 4.29, 4.57, 4.86, 5.00, 5.14
Ford 10" PRO - Dual bolt pattern	3.89, 4.11, 4.29, 4.57, 4.71, 5.00, 5.14, 5.43, 5.67, 5.83, 6.20
GM 8.4" Corvette	3.08, 3.36, 3.55, 3.73, 4.11, 4.33, 4.56
GM 12 Bolt Car	3.08, 3.31, 3.42, 3.55, 3.73, 3.73-4, 3.91, 4.11, 4.11 THICK, 4.30, 4.56, 4.56 THICK, 4.88, 5.14, 5.38
GM 12 Bolt Car PRO	4.11, 4.30, 4.56, 4.88, 5.00, 5.14, 5.38, 5.57, 5.86, 6.00, 6.14

When it comes time to select a ring & pinion set for your next vehicle build, look to Eaton Performance for your traction needs.

For a complete list of available applications and part numbers, visit your local Eaton Performance distributor or EatonPerformance.com.



Eaton
26101 Northwestern Highway
Southfield, MI 48076 USA
800-328-3850
EatonPerformance.com

©2018 Eaton. All rights reserved.
APSL0527 0518



Powering Business Worldwide

