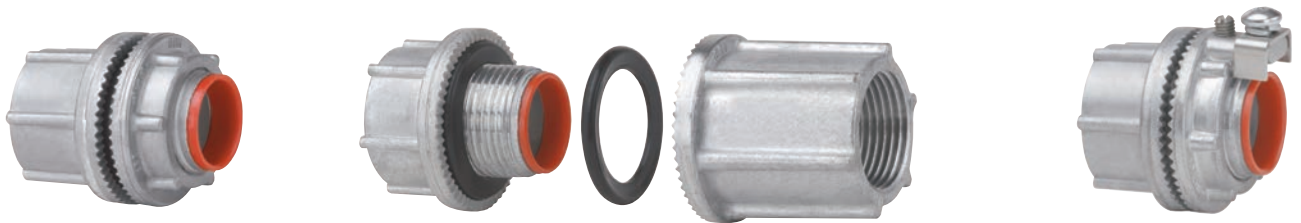
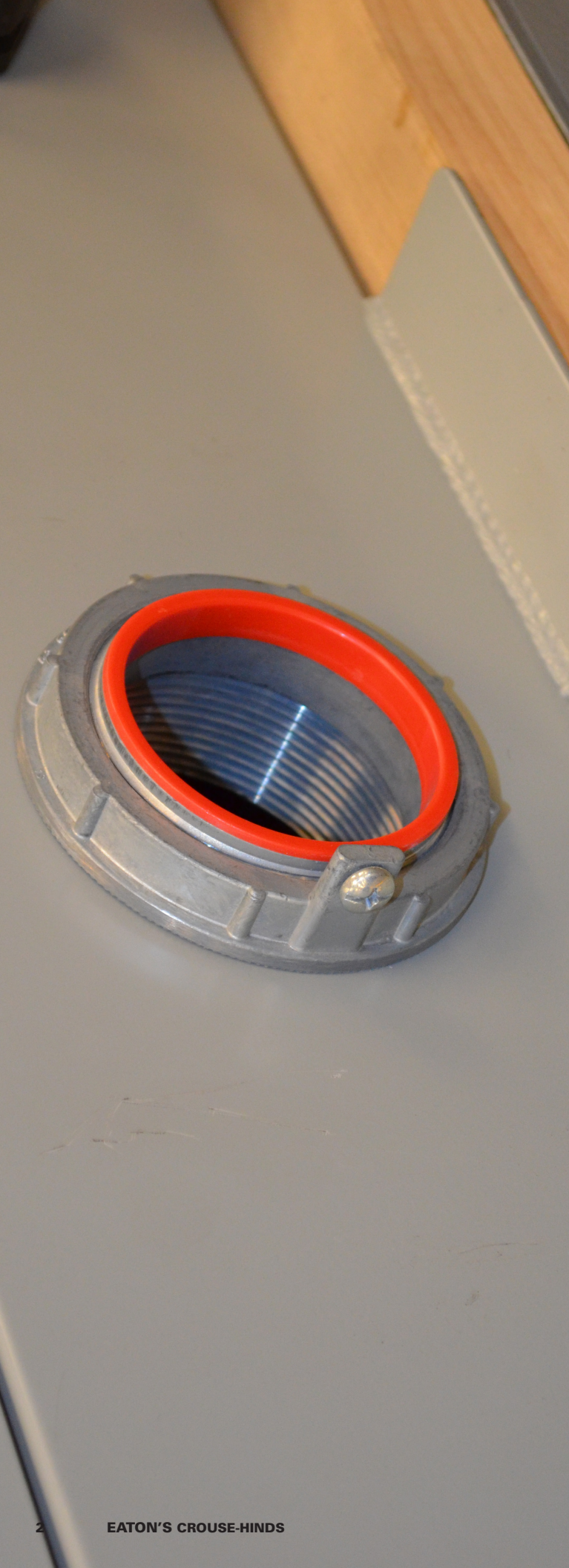


Myers hubs

The broadest, most complete offering for terminating Rigid/IMC to a box or enclosure



Powering Business Worldwide

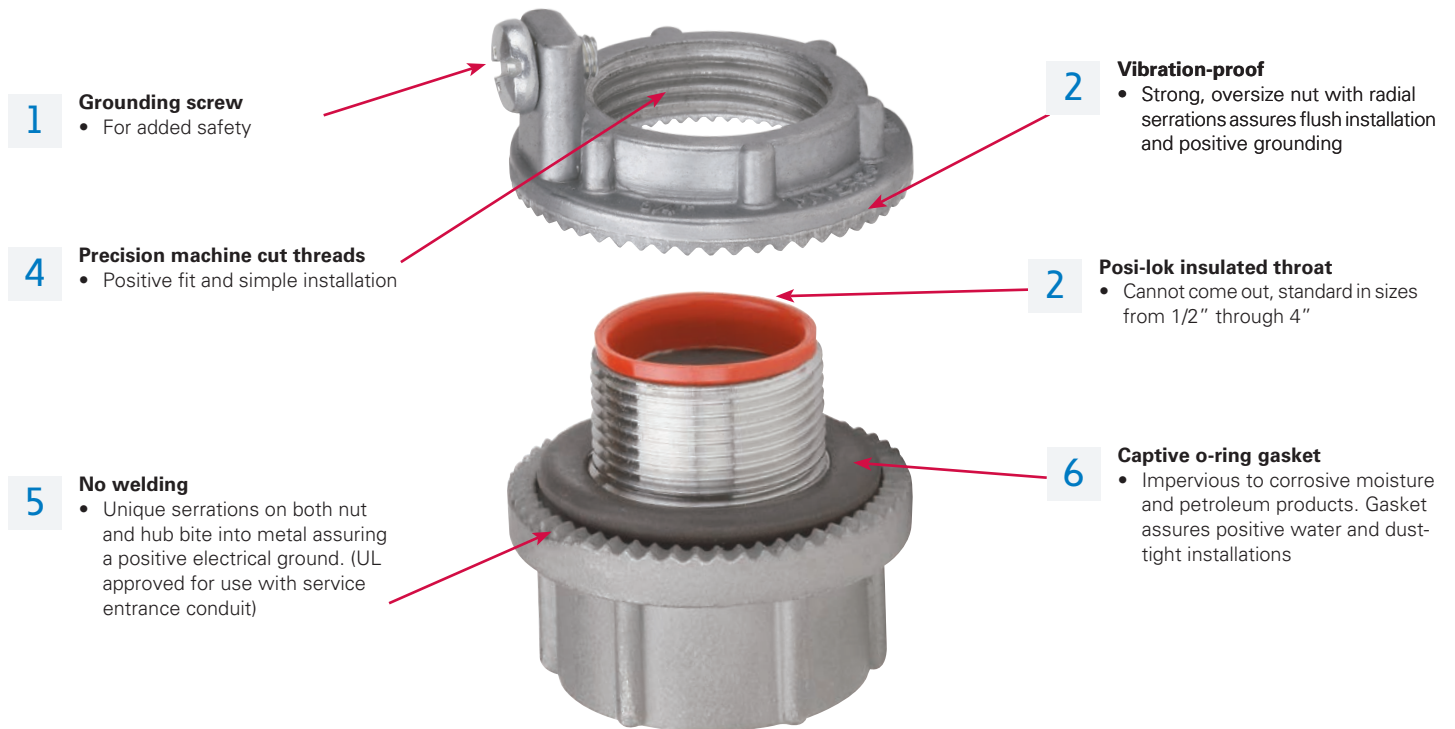


The original!

Often imitated, never duplicated! Available in a wide range of sizes, materials and ratings to meet virtually any customer application!

Myers™ is the industry leader others have attempted to duplicate but is unparalleled in selection, capability and dependability. In addition to being the most recognized brand of hub on the market, Myers offers larger stainless hub trade sizes, aluminum hubs, ATEX approved hubs, cap-offs, drains, and more!

Myers hubs design features



Stainless steel now rated for -55°C to 180°C



Available in trade sizes 3/8" through 6"

Hub Basic Scru-Tite®

Hubs are ideal for general use with rigid conduit. Provides positive seal and electrical ground.



Available in trade sizes 1/2" through 6"

Ground hub

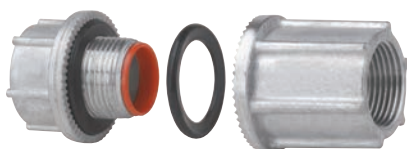
Combines all of the features of the Hub Basic Scru-Tite® plus the additional feature of the grounding screw on the locknut.



Available in trade sizes 1/2" through 4"

ATEX rated hub

Hub is listed for use in hazardous (classified) locations to IECEx-ATEX certifications. Ideal for global requirements and OEM's shipping material worldwide.



Through-bulkhead fitting

Hubs are the perfect method for installing hubs on cast boxes or through thicker walls.



Metric to NPT adapter

Used to convert a threaded metric entry to a NPT entry.



Drain plugs

Designed to install in the bottom of an enclosure to drain any accumulated condensation. Available in aluminum or stainless steel construction.



Cap-off

Designed to install in enclosure to provide environmental cap for unused entries or knockouts.

Myers hubs



Applications:

- Myers hubs are used in the termination of electrical circuits through wall of the enclosure
- Designed for use indoors or outdoors with rigid conduit and IMC
- Ideal for pharmaceutical, chemical and food processing, pulp/paper, nuclear, solar and commercial construction applications
- Suitable for use in environmentally demanding applications, including those with the presence of chemicals, such as acetic, citric and salt water
- Suitable for use in hazardous (classified) locations

Features:

- Wide range of styles, trade sizes and materials to meet customer requirements and preferences
- Multiple certifications provide users peace of mind
- Easy installation and smooth pulling service for labor savings
- Tapered female threads for rigid/IMC conduit, NPSM male threads

Standard materials:

- Nut: Zinc (Zamek-2, Zamek-3), Aluminum (Al 360), stainless (316)
- Body: Zinc (Zamek-2, Zamek-3), aluminum (Al 360), stainless (316)
- Insuliner: Lexan
- O-Ring: Viton; Silicone (ATEX version only)
- Ground Screw: Steel/stainless steel

Standard finishes:

- Aluminum: Natural
- Zinc: Natural
- Stainless: Natural

Certification and compliances:

NEC/CEC:

- Class I, Division 2
- Class II, Division 1 & 2
- Class III, Division 1 & 2
- Class I, Zone 1, AEx e II
- Class I, Zone 1, Ex e II


UL Listed

- UL Standard 514B

CSA Certified

- Certified by UL to CSA Standard C22.2 No. 18
NEMA Type 2, 3, 3R, 4, 4X, 12 (std & ground hub)

IEC:

- ATEX Certified to EN60079-0:2009, EN60079-7:2007 and EN60079-14 Standards
- ATEX Certified ITS12ATEX47591X  II 2G Ex e IIC Gb Ta (stainless steel -55°C to 180°C) (zinc -15°C to 120°C)
- IECEx Certified IECEx ETL 12.0009X to IEC 60079-0:2007-10, Edition 5 and IEC 60079-7:2006-07, Edition 4 IECEx-Ex e II Gb Ta (stainless steel -55°C to 180°C) (zinc -15°C to 120°C)
- IP66

Options:

Description

- Nickel-chrome plate finish (zinc hubs only) **CP**

Myers hubs

Hub basic Scru-Tite®

NEMA 2, 3, 3R, 4, 4X, 12
Zinc

UL File No. E-27258



Cat. #	Size	Unit qty.	Wt. lbs. per 100
ST 03†	3/8"	25	11
ST 1†	1/2"	25	19
ST 2†	3/4"	25	27
ST 3†	1"	25	40
ST 4†	1 1/4"	10	51
ST 5†	1 1/2"	10	68
ST 6†	2"	10	92
ST 7†	2 1/2"	5	210
ST 8†	3"	2	245
ST 9†	3 1/2"	2	278
ST 10†	4"	2	318
ST 11*	5"	1	478
ST 12*	6"	1	685

†Optional nickel-chrome plate finish. Add suffix -CP.
*Not supplied with insulator.



Hub basic Scru-Tite®

NEMA 2, 3, 3R, 4, 4X, 12
Aluminum

UL File No. E-27258



Cat. #	Size	Unit qty.	Wt. lbs. per 100
STA 1	1/2"	25	8
STA 2	3/4"	25	11
STA 3	1"	25	17
STA 4	1 1/4"	10	30
STA 5	1 1/2"	10	30
STA 6	2"	10	38
STA 7	2 1/2"	5	80
STA 8	3"	2	100
STA 9	3 1/2"	2	138
STA 10	4"	2	150
STA 11*	5"	1	300
STA 12*	6"	1	300

*Not supplied with insulator.



Ground hub

NEMA 2, 3, 3R, 4, 4X, 12
316 stainless steel

UL File No. E-59509



Cat. #	Size	Unit qty.	Wt. lbs. per 100
SSTG 1	1/2"	10	29
SSTG 2	3/4"	10	41
SSTG 3	1"	10	57
SSTG 4	1 1/4"	5	73
SSTG 5	1 1/2"	5	99
SSTG 6	2"	5	134
SSTG 7	2 1/2"	2	183
SSTG 8	3"	2	278
SSTG 9	3 1/2"	2	328
SSTG 10	4"	2	395



Ground hub

NEMA 2, 3, 3R, 4, 4X, 12
Zinc

UL File No. E-59509



Cat. #	Size	Unit qty.	Wt. lbs. per 100	Max. copper ground wire size	
				CSA‡	UL‡
STG 1	1/2"	25	20	#8	#8
STG 2	3/4"	25	28	#8	#8
STG 3	1"	25	42	#8	#8
STG 4	1 1/4"	10	55	#8	#8
STG 5	1 1/2"	10	70	#6	#8
STG 6	2"	10	95	#4	#8
STG 7	2 1/2"	5	190	#2	#6
STG 8	3"	2	243	1/0	#6
STG 9	3 1/2"	2	300	2/0	#6
STG 10	4"	2	323	2/0	#4
STG 11*	5"	1	625	2/0	#2
STG 12*	6"	1	750	3/0	#1

*Not supplied with insulator.

‡Use of wire terminal is required by CSA and recommended by UL for wire gauges over 10 AWG.

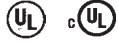


Myers hubs

Ground hub

NEMA 2, 3, 3R, 4, 4X, 12
Aluminum

UL File No. E-59509



Cat. #	Size	Unit qty.	Wt. lbs. per 100	Max. copper ground wire size	
				CSA‡	UL‡
STAG 1	1/2"	25	13	#8	#8
STAG 2	3/4"	25	14	#8	#8
STAG 3	1"	25	18	#8	#8
STAG 4	1 1/4"	10	25	#8	#8
STAG 5	1 1/2"	10	33	#6	#8
STAG 6	2"	10	41	#4	#8
STAG 7	2 1/2"	5	90	#2	#6
STAG 8	3"	2	103	1/0	#6
STAG 9	3 1/2"	2	138	2/0	#6
STAG 10	4"	2	140	2/0	#4
STAG 11*	5"	1	325	3/0	#2
STAG 12*	6"	1	350	3/0	#1

*Not supplied with insulator.

‡Use of wire terminal is required by CSA and recommended by UL for wire gauges over 10 AWG.



ATEX hazardous location hub with increased safety ground terminal

NEMA 2, 3, 3R, 4, 4X; IP66

Zinc



II 2 G Ex e IIC Gb Ta (-15°C to 120°C)

IECEx – Ex e II Gb Ta (-15°C to 120°C)

Class I, Zone 1, AEx e II

Class I, Zone 1, Ex e II

UL File No. E-59509



Cat. #	Size	Unit qty.	Wt. lbs. per 100	Max. copper ground wire size	
				CSA‡	UL‡
STGK 1	1/2"	10	20	#8	#8
STGK 2	3/4"	10	31	#8	#8
STGK 3	1"	10	44	#8	#8
STGK 4	1 1/4"	5	60	#8	#8
STGK 5	1 1/2"	5	73	#6	#8
STGK 6	2"	5	99	#4	#8
STGK 7	2 1/2"	2	145	#2	#6
STGK 8	3"	2	243	1/0	#6
STGK 9	3 1/2"	2	304	2/0	#6
STGK 10	4"	2	327	2/0	#4

‡Use of wire terminal is required by CSA and recommended by UL for wire gauges over 10 AWG.



ATEX hazardous location hub with increased safety ground terminal

NEMA 2, 3, 3R, 4, 4X; IP66

316 stainless steel



II 2 G Ex e IIC Gb Ta (-55°C to 180°C)

IECEx – Ex e II Gb Ta (-55°C to 180°C)

Class I, Zone 1, AEx e II

Class I, Zone 1, Ex e II

UL File No. E-59509



Cat. #	Size	Unit qty.	Wt. lbs. per 100	Max. copper ground wire size	
				CSA‡	UL‡
SSTGK 1	1/2"	10	33	#8	#8
SSTGK 2	3/4"	10	44	#8	#8
SSTGK 3	1"	10	60	#8	#8
SSTGK 4	1 1/4"	5	76	#8	#8
SSTGK 5	1 1/2"	5	103	#6	#8
SSTGK 6	2"	5	137	#4	#8
SSTGK 7*	2 1/2"	2	185	#2	#6
SSTGK 8*	3"	2	281	1/0	#6
SSTGK 9*	3 1/2"	2	331	2/0	#6
SSTGK 10*	4"	2	399	2/0	#4

*SSTGK 7 - SSTGK 10 temperature range is -15°C to 120°C.

‡Use of wire terminal is required by CSA and recommended by UL for wire gauges over 10 AWG.



Through-bulkhead fitting

Zinc

UL File No. E-27258



Cat. #	Size	Unit qty.	Wt. lbs. per 100
STTB 1	1/2"	5	30
STTB 2	3/4"	5	50
STTB 3	1"	5	70
STTB 4	1 1/4"	5	85
STTB 5	1 1/2"	5	110
STTB 6	2"	5	152
STTB 7	2 1/2"	4	280
STTB 8	3"	2	408
STTB 9	3 1/2"	2	468
STTB 10	4"	2	533



Myers hubs

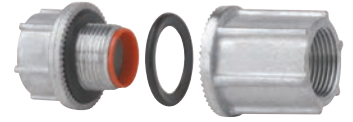
Through-bulkhead fitting

Aluminum

UL File No. E-27258



Cat. #	Size	Unit qty.	Wt. lbs. per 100
STTBA 1	1/2"	5	11
STTBA 2	3/4"	5	21
STTBA 3	1"	5	31
STTBA 4	1 1/4"	5	40
STTBA 5	1 1/2"	5	50
STTBA 6	2"	5	65
STTBA 7	2 1/2"	4	106
STTBA 8	3"	2	175



Through-bulkhead fitting

Zinc without nipples

Packaged as two pieces unassembled

UL File No. E-27258



Cat. #	Size	Unit qty.	Wt. lbs. per 100
STTTB 1	1/2"	5	35
STTTB 2	3/4"	5	58
STTTB 3	1"	5	85
STTTB 4	1 1/4"	5	105
STTTB 5	1 1/2"	5	135
STTTB 6	2"	5	169



Through-bulkhead fitting

Aluminum without nipples

Packaged as two pieces unassembled

UL File No. E-27258



Cat. #	Size	Unit qty.	Wt. lbs. per 100
STTTBA 1	1/2"	5	16
STTTBA 2	3/4"	5	25
STTTBA 3	1"	5	35
STTTBA 4	1 1/4"	5	40
STTTBA 5	1 1/2"	5	50
STTTBA 6	2"	5	75

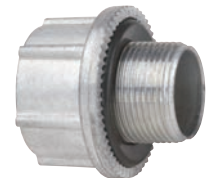


Metric to NPT adapter

Zinc



Cat. #	Size	Unit qty.	Wt. lbs. per 100
STM 1	M20 - 1/2"	25	13
STM 2	M25 - 3/4"	25	19
STM 3	M32 - 1"	25	32
STM 4	M40 - 1 1/4"	10	40
STM 5	M50 - 1 1/2"	10	57
STM 6	M63 - 2"	10	70



Note: The Myers metric to NPT hub adapter is used to convert a threaded metric entry to an NPT entry. The female thread is NPT and the male thread is metric.

Metric to NPT adapter

316 Stainless Steel



Cat. #	Size	Unit qty.	Wt. lbs. per 100
SSTM 1	M20 - 1/2"	10	12
SSTM 2	M25 - 3/4"	10	27
SSTM 3	M32 - 1"	10	32
SSTM 4	M40 - 1 1/4"	5	46
SSTM 5	M50 - 1 1/2"	5	50
SSTM 6	M63 - 2"	5	99



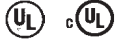
Note: The Myers metric to NPT hub adapter is used to convert a threaded metric entry to an NPT entry. The female thread is NPT and the male thread is metric.

Myers hubs

Non-hazardous drain plug

316 stainless steel

UL File No. E-23223



Cat. #	Size	Unit qty.	Wt. lbs. per 100
SSTC 1	1/2"	25	17
SSTC 1CD	1/2"	10	12



Non-hazardous drain plug

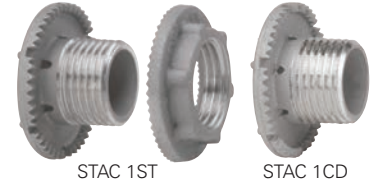
Aluminum

UL File No. E-23223



Cat. #	Size	Unit qty.	Wt. lbs. per 100
STAC 1ST	1/2"	25	6
STAC 1CD	1/2"	25	2

Note: SSTC 1 and STAC 1ST are for knockouts and are supplied with a locknut and straight threads. SSTC 1CD and STAC 1CD are for threaded openings and are supplied without locknut and NPT threads. Not gasketed to allow for water drainage.



Cap-off

Zinc

UL File No. E-23223



Cat. #	Size	Unit qty.	Wt. lbs. per 100
STC 1†	1/2"	25	13
STC 2†	3/4"	25	19
STC 3†	1"	25	28
STC 4†*	1 1/4"	10	40
STC 5†*	1 1/2"	10	50
STC 6†*	2"	10	67

†Optional nickel-chrome plate finish. Add suffix -CP.
*Not UL Listed.



Cap-off

Aluminum

UL File No. E-23223



Cat. #	Size	Unit qty.	Wt. lbs. per 100
STAC 1	1/2"	25	5
STAC 2	3/4"	25	8
STAC 3	1"	25	12



Ground Nut

Zinc

UL File No. E-59509



Cat. #	Size	Unit qty.	Wt. lbs. per 100	Max. copper ground wire size	
				CSA†	UL†
STGN 1	1/2"	25	6	#8	#8
STGN 2	3/4"	25	10	#8	#8
STGN 3	1"	25	13	#8	#8
STGN 4	1 1/4"	10	15	#8	#8
STGN 5	1 1/2"	10	23	#6	#8
STGN 6	2"	10	28	#4	#8

†Use of wire terminal is required by CSA and recommended by UL for wire gauges over 10 AWG.



Ground Nut

Aluminum

UL File No. E-59509



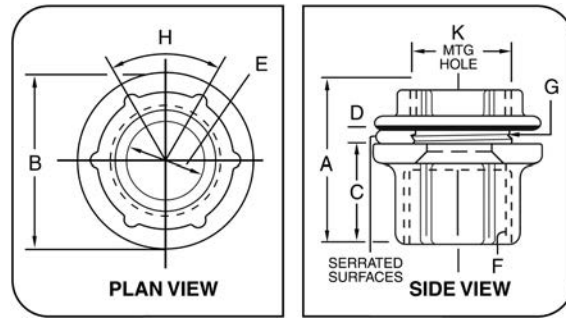
Cat. #	Size	Unit qty.	Wt. lbs. per 100	Max. copper ground wire size	
				CSA†	UL†
STAGN 1	1/2"	25	3	#8	#8
STAGN 2	3/4"	25	4	#8	#8
STAGN 3	1"	25	6	#8	#8
STAGN 4	1 1/4"	10	8	#8	#8
STAGN 5	1 1/2"	10	11	#6	#8
STAGN 6	2"	10	14	#4	#8

†Use of wire terminal is required by CSA and recommended by UL for wire gauges over 10 AWG.



Myers hubs technical information

Hub dimensions (in inches):

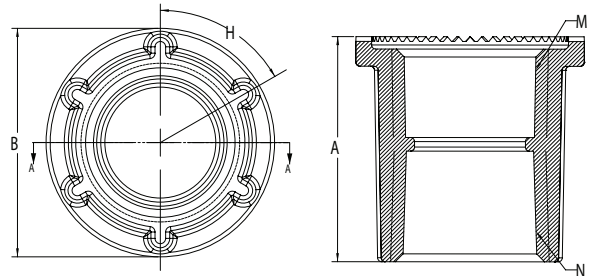


"D" dimension indicates maximum panel thickness which hub will accommodate.

Pipe Size	A	B	C	D	E		F	G	H	K (Mounting Hole)	
					Min.	Max.				Min.	Max.
3/8	1 ³ / ₃₂	1 ¹ / ₈	2 ¹ / ₃₂	1/8	0.468	0.493	3/8 NPT	3/8 NPSM	60°	4 ³ / ₆₄	1 ¹ / ₁₆
1/2	1 ¹¹ / ₃₂	1 ⁷ / ₁₆	1 ³ / ₁₆	3/16	0.591	0.622	1/2 NPT	1/2 NPSM	60°	5 ⁵ / ₆₄	7/8
3/4	1 ¹⁵ / ₃₂	1 ²³ / ₃₂	2 ⁹ / ₃₂	3/16	0.783	0.824	3/4 NPT	3/4 NPSM	60°	1 ¹ / ₁₆	1 ¹ / ₈
1	1 ²¹ / ₃₂	2	1 ¹ / ₃₂	1/4	0.997	1.049	1 NPT	1 NPSM	60°	1 ²¹ / ₆₄	1 ³ / ₈
1 1/4	1 ¹¹ / ₁₆	2 ³ / ₈	1 ¹ / ₃₂	1/4	1.311	1.380	1 1/4 NPT	1 1/4 NPSM	60°	1 ⁴³ / ₆₄	1 ³ / ₄
1 1/2	1 ¹¹ / ₁₆	2 ³ / ₄	1 ¹ / ₃₂	1/4	1.529	1.610	1 1/2 NPT	1 1/2 NPSM	60°	1 ⁵⁹ / ₆₄	2
2	1 ³ / ₄	3 ¹ / ₄	1 ³ / ₃₂	1/4	1.964	2.067	2 NPT	2 NPSM	60°	2 ²⁵ / ₆₄	2 1/2
2 1/2	2 ⁷ / ₃₂	3 ³ / ₄	1 ⁹ / ₃₂	1/4	2.346	2.469	2 1/2 NPT	2 1/2 NPSM	60°	2 ⁵⁷ / ₆₄	3
3	2 ⁹ / ₁₆	4 ³ / ₈	1 ³ / ₈	1/4	2.915	3.068	3 NPT	3 NPSM	45°	3 ³³ / ₆₄	3 ⁵ / ₈
3 1/2	2 ³ / ₈	5	1 ⁷ / ₁₆	1/4	3.371	3.548	3 1/2 NPT	3 1/2 NPSM	45°	4 ¹ / ₆₄	4 ¹ / ₈
4	2 ⁷ / ₁₆	5 1/2	1 1/2	1/4	3.825	4.026	4 NPT	4 NPSM	45°	4 ³³ / ₆₄	4 ⁵ / ₈
5	2 ¹⁵ / ₁₆	6 ⁷ / ₈	2	1/4	4.795	5.047	5 NPT	5 NPSM	45°	5 ³⁷ / ₆₄	5 ¹¹ / ₁₆
6	3	7 ¹¹ / ₁₆	2	5/16	5.762	6.065	6 NPT	6 NPSM	45°	6 ⁴¹ / ₆₄	6 ³ / ₄

Bulkhead dimensions (in inches):

Cat. #	Size	A	B	H	M	N
STTB 1 STTB A 1 STTTB 1 STTTBA 1	1/2	1.465	1.429	60°	1/2 - 14 NPSM	1/2 - 14 NPT
STTB 2 STTB A 2 STTTB 2 STTTBA 2	3/4	1.652	1.677	60°	3/4 - 14 NPSM	3/4 - 14 NPT
STTB 3 STTB A 3 STTTB 3 STTTBA 3	1	1.801	1.998	60°	1 - 11 1/2 NPSM	1 - 11 1/2 NPT
STTB 4 STTB A 4 STTTB 4 STTTBA 4	1 1/4	1.711	2.373	60°	1 1/4 - 11 1/2 NPSM	1 1/4 - 11 1/2 NPT
STTB 5 STTB A 5 STTTB 5 STTTBA 5	1 1/2	1.717	2.741	60°	1 1/2 - 11 1/2 NPSM	1 1/2 - 11 1/2 NPT
STTB 6 STTB A 6 STTTB 6 STTTBA 6	2	1.755	3.230	60°	2 - 11 1/2 NPSM	2 - 11 1/2 NPT
STTB 7 STTB A 7	2 1/2	2.500	3.747	45°	2 1/2 - 8 NPSM	2 1/2 - 8 NPT
STTB 8 STTB A 8	3	2.500	4.392	45°	3 - 8 NPSM	3 - 8 NPT
STTB 9	3 1/2	2.290	4.975	45°	3 1/2 - 8 NPSM	3 1/2 - 8 NPT
STTB 10	4	2.439	5.516	45°	4 - 8 NPSM	4 - 8 NPT



Myers hubs technical information

Spacing chart:

Conduit or pipe size

Cond. size	1/4	3/8	1/2	3/4	1	1 1/4	1 1/2	2	2 1/2	3	3 1/2	4	5	6
3/8	1 ⁵ / ₃₂	1 1/4												
1/2	1 ⁵ / ₁₆	1 ¹³ / ₃₂	1 ⁹ / ₁₆											
3/4	1 ⁷ / ₁₆	1 ¹⁷ / ₃₂	1 ¹¹ / ₁₆	1 ¹³ / ₁₆										
1	1 ⁹ / ₃₂	1 ¹¹ / ₁₆	1 ²⁷ / ₃₂	1 ³¹ / ₃₂	2 ¹ / ₈									
1 1/4	1 ²⁵ / ₃₂	1 ⁷ / ₈	2 ¹ / ₃₂	2 ⁵ / ₃₂	2 ⁵ / ₁₆	2 ¹ / ₂								
1 1/2	1 ³¹ / ₃₂	2 ¹ / ₁₆	2 ⁷ / ₃₂	2 ¹¹ / ₃₂	2 ¹ / ₂	2 ¹¹ / ₁₆	2 ⁷ / ₈							
2	2 ⁷ / ₃₂	2 ⁵ / ₁₆	2 ¹⁵ / ₃₂	2 ¹⁹ / ₃₂	2 ³ / ₄	2 ¹⁵ / ₁₆	3 ¹ / ₈	3 ³ / ₈						
2 1/2	2 ¹⁵ / ₃₂	2 ⁹ / ₁₆	2 ²³ / ₃₂	2 ²⁷ / ₃₂	3	3 ³ / ₁₆	3 ³ / ₈	3 ⁵ / ₈	3 ⁷ / ₈					
3	2 ²⁵ / ₃₂	2 ⁷ / ₈	3 ¹ / ₃₂	3 ⁵ / ₃₂	3 ⁵ / ₁₆	3 ¹ / ₂	3 ¹¹ / ₁₆	3 ¹⁵ / ₁₆	4 ³ / ₁₆	4 ¹ / ₂				
3 1/2	3 ³ / ₃₂	3 ³ / ₁₆	3 ¹¹ / ₃₂	3 ¹⁵ / ₃₂	3 ⁵ / ₈	3 ¹³ / ₁₆	4	4 ¹ / ₄	4 ¹ / ₂	4 ¹³ / ₁₆	5 ¹ / ₈			
4	3 ¹¹ / ₃₂	3 ⁷ / ₁₆	3 ¹⁹ / ₃₂	3 ²³ / ₃₂	3 ⁷ / ₈	4 ¹ / ₁₆	4 ¹ / ₄	4 ¹ / ₂	4 ³ / ₄	5 ¹ / ₁₆	5 ³ / ₈	5 ³ / ₄		
5	4 ¹ / ₃₂	4 ¹ / ₈	4 ⁹ / ₃₂	4 ¹³ / ₃₂	4 ⁹ / ₁₆	4 ³ / ₄	4 ¹⁵ / ₁₆	5 ³ / ₁₆	5 ⁷ / ₁₆	5 ³ / ₄	6 ¹ / ₁₆	6 ³ / ₁₆	7 ¹ / ₈	
6	4 ¹³ / ₃₂	4 ¹ / ₂	4 ²¹ / ₃₂	4 ²⁵ / ₃₂	4 ¹⁵ / ₁₆	5 ¹ / ₈	5 ⁵ / ₁₆	5 ⁹ / ₁₆	5 ¹³ / ₁₆	6 ¹ / ₈	6 ⁷ / ₁₆	6 ¹¹ / ₁₆	7 ³ / ₈	7 ³ / ₄

Minimum space from center of pipe or conduit to nearest obstruction.

1. Dimensions in top row (boxed squares) are centers for conduits of same size.

Example: How close may 3" conduits be spaced? Answer 4 1/2".

2. Dimensions in gray shaded squares are for centers of conduits

NOT of the same size. Example: What is the minimum spacing for 2"

and 3/4" conduit? Read down column marked 3/4" to figure opposite 2" and find dimension is 2¹⁹/₃₂".

Note: Minimum spacing dimensions as shown will give approximately 1/8" clearance between locking nuts.

Minimum space from center of pipe or conduit to nearest obstruction

	1 ⁹ / ₃₂	1 ¹¹ / ₁₆	2 ⁷ / ₃₂	3 ¹ / ₃₂	1 ¹ / ₈	1 ⁵ / ₁₆	1 1/2	1 3/4	2	2 ⁵ / ₁₆	2 ⁵ / ₈	2 ⁷ / ₈	3 ⁹ / ₁₆	3 ¹⁵ / ₁₆
--	--------------------------------	---------------------------------	--------------------------------	--------------------------------	-------------------------------	--------------------------------	-------	-------	---	--------------------------------	-------------------------------	-------------------------------	--------------------------------	---------------------------------

**U.S. (global headquarters):
Eaton's Crouse-Hinds Division**

1201 Wolf Street
Syracuse, NY 13208

(866) 764-5454

FAX: (315) 477-5179

Orders Only:

ECHUSAOrders@eaton.com

crousecustomerctr@eaton.com

For more information:

If further assistance is required, please contact an authorized Eaton Distributor, Sales Office, or Customer Service Department.

Canada

Toll Free: 800-265-0502

FAX: (800) 263-9504

FAX Orders only: (866) 653-0645

Mexico/Latin America/Caribbean

52-555-804-4000

FAX: 52-555-804-4020

ventascentromex@eaton.com

Germany

49 (0) 6271 806-500

49 (0) 6271 806-476

info-ex@eaton.com

Eaton Middle East

9714-8066100

FAX: 9714-8894813

chmesales@eaton.com

Singapore

65-6825-1668

FAX: 65-6645-9811

chsi-sales@eaton.com

China

86-21-2899-3600

FAX: 86-21-2899-4055

ECHsales@eaton.com

Korea

82 2 6380 4032

FAX: 82-2-6380-4070

CCHKsales@eaton.com

Australia

61-2-8787-2777

FAX: 61-2-9609-2342

crousehindsanz@eaton.com

India

91-124-4683888

FAX: 91-124-4683899

cchindia@eaton.com

Eaton

1000 Eaton Boulevard
Cleveland, OH 44122
United States
Eaton.com

© 2019 Eaton Corporation
All Rights Reserved
Printed in USA
Form No. 5417-0519
May 2019

Eaton's Crouse-Hinds Division

1201 Wolf Street
Syracuse, NY 13208
(866) 764-5454
CrouseCustomerCTR@eaton.com

Eaton is a registered trademark.

All other trademarks are property of their respective owners.



Powering Business Worldwide