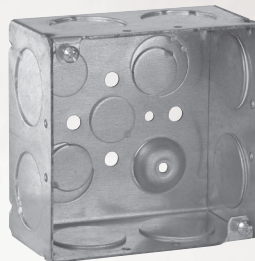
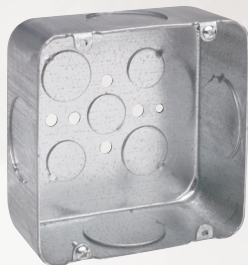


Commercial products

CROUSE-HINDS  
SERIES

# Low voltage boxes

More cubic capacity provides adequate space for cable installation and management



**EATON**

*Powering Business Worldwide*

# Low voltage boxes

Low voltage outlet boxes meet modern day data communication installation demands. Ample space for slack cable and service loops support BICSI recommendations.

## Applications:

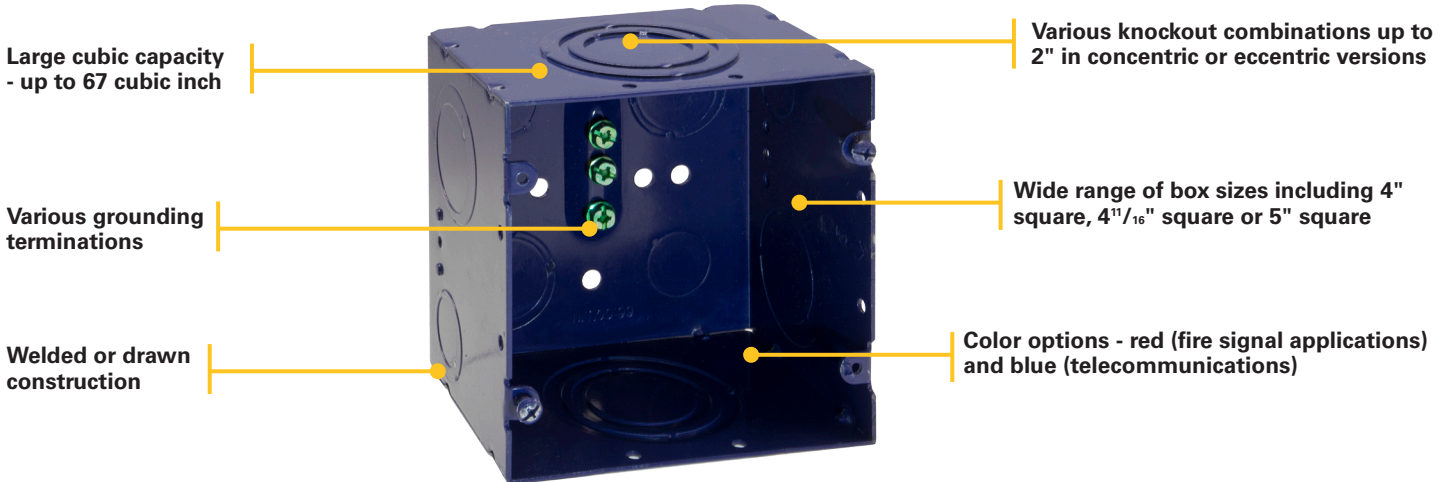
- The data communications boxes are ideal for applications requiring the increased capacity including the installation of data communication, fire alarms and other applications requiring larger cubic capacity and knockouts.
- Suitable for healthcare, education, commercial and government facilities
- Ideal for audio, video, data and power applications
- For use with Rigid/IMC and EMT conduit

## Standard materials & finishes:

- Material - steel (.0625 (G60) galvanized)
- Finish - natural, blue or red painted

## Certifications and compliances:

- UL Listed



5" square series adapter plate (TP5CP) accommodates the use of readily available 4" square box covers, mud rings and tile rings

For stud mounting, select box with incorporated bracket or use stud bracket that accommodates up to 5" square box



Shown with B-Line BB7-16 bracket

## Standard unpainted boxes

| Cat. #                    | Box size     | Box depth | Brkt. | Descrip.       | Grounding method | Cap. cu. in. | Knockouts   |                             |
|---------------------------|--------------|-----------|-------|----------------|------------------|--------------|---|-----------------------------|
|                           |              |           |       |                |                  |              | Sides   | Bottom                      |
| TP472                     | 4" sq.       | Blank     | -     | Cover          | -                | -            | -   | -                           |
| TP436                     | 4" sq.       | 2 1/8"    | -     | Welded         | Ground bump      | 30.3         | 8 - 1"  | 2 - 1/2", 2 - 1/2" + 3/4" E |
| TP436MSB                  | 4" sq.       | 2 1/8"    | MSB   | Welded         | Ground bump      | 30.3         | 8 - 1"  | 2 - 1/2", 2 - 1/2" + 3/4" E |
| TP568                     | 4 11/16" sq. | Blank     | -     | Cover          | -                | -            | -   | -                           |
| <b>New!</b> TP72181-1-1/4 | 4 11/16" sq. | 3"        | -     | Welded         | Ground bump      | 60.0         | 8 - 1 1/4"  | 2 - 1/2", 2 - 3/4"          |
| <b>New!</b> TP72181-1-1/2 | 4 11/16" sq. | 3"        | -     | Welded         | Ground bump      | 60.0         | 4 - 1 1/2"  | 2 - 1/2", 2 - 3/4"          |
| TP558                     | 4 11/16" sq. | 2 1/8"    | -     | Drawn          | -                | 42.0         | 4 - 3/4", 4 - 1"  | 3 - 1/2", 2 - 3/4"          |
| TP558PF                   | 4 11/16" sq. | 2 1/8"    | -     | Drawn          | Pigtail          | 42.0         | 4 - 3/4", 4 - 1"  | 3 - 1/2", 2 - 3/4"          |
| <b>New!</b> TP72181-DTA   | 4 11/16" sq. | 3 1/4"    | -     | Welded         | Ground screw     | 66.0         | 2 - 1/2" + 3/4" C, 2 - 1" + 1 1/4" C, 2 - 1" + 1 1/4" + 1 1/2" + 2" C | 2 - 1/2", 2 - 3/4" + 1" C   |
| TP560                     | 4 11/16" sq. | 2 1/8"    | -     | Drawn          | -                | 42.0         | 8 - 1"  | 3 - 1/2", 2 - 3/4"          |
| TP562                     | 4 11/16" sq. | 2 1/8"    | -     | Drawn          | -                | 42.0         | 4 - 1 1/4"  | 3 - 1/2", 2 - 3/4"          |
| <b>New!</b> TP72181-DTAB  | 4 11/16" sq. | 3 1/4"    | AB    | Welded         | Ground screw     | 66.0         | 2 - 1/2" + 3/4" C, 2 - 1" + 1 1/4" C, 2 - 1" + 1 1/4" + 1 1/2" + 2" C | 2 - 1/2", 2 - 3/4" + 1" C   |
| <b>New!</b> TP5BC         | 5" sq.       | Blank     | -     | Cover          | -                | -            | -   | -                           |
| <b>New!</b> TP5CP         | 5" sq.       | -         | -     | 4" Sq. adapter | -                | -            | -   | -                           |
| <b>New!</b> TP5SQ5075     | 5" sq.       | 2 1/8"    | -     | Welded         | -                | 67.0         | 12 - 1/2" + 3/4" C  | 3 - 1/2", 2 - 3/4"          |
| <b>New!</b> TP5SQ50100    | 5" sq.       | 2 1/8"    | -     | Welded         | -                | 67.0         | 4 - 1/2", 8 - 1"  | 3 - 1/2", 2 - 3/4"          |
| <b>New!</b> TP5SQ100125   | 5" sq.       | 2 1/8"    | -     | Welded         | -                | 67.0         | 4 - 1", 4 - 1 1/4"  | 3 - 1/2", 2 - 3/4"          |

- ⓄUL Listed.
- ⓄNot UL Listed.
- ⓄCSA certified.



# Low voltage boxes



## Blue communications boxes

| Cat. #                         | Box size                              | Box depth                       | Brkt. | Descrip.       | Grounding method | Cap. cu. in. | Knockouts  |   |
|--------------------------------|---------------------------------------|---------------------------------|-------|----------------|------------------|--------------|--|---|
|                                |                                       |                                 |       |                |                  |              | Sides  | Bottom  |
| <b>New!</b> TP568BLUE          | 4 <sup>11</sup> / <sub>16</sub> " sq. | Blank                           | -     | Cover          | -                | -            | -  | -   |
| <b>New!</b> TP72181-1-1/4-BLUE | 4 <sup>11</sup> / <sub>16</sub> " sq. | 3"                              | -     | Welded         | Ground bump      | 60.0         | 8 - 1 <sup>1</sup> / <sub>4</sub> "  | 2 - 1 <sup>1</sup> / <sub>2</sub> ", 2 - 3 <sup>3</sup> / <sub>4</sub> "        |
| <b>New!</b> TP72181-1-1/2-BLUE | 4 <sup>11</sup> / <sub>16</sub> " sq. | 3"                              | -     | Welded         | Ground bump      | 60.0         | 4 - 1 <sup>1</sup> / <sub>2</sub> "  | 2 - 1 <sup>1</sup> / <sub>2</sub> ", 2 - 3 <sup>3</sup> / <sub>4</sub> "        |
| <b>New!</b> TP72181-DTAB-BLUE  | 4 <sup>11</sup> / <sub>16</sub> " sq. | 3 <sup>3</sup> / <sub>4</sub> " | -     | Welded         | Ground screw     | 66.0         | 2 - 1 <sup>1</sup> / <sub>2</sub> " + 3 <sup>3</sup> / <sub>4</sub> " C, 2 - 1" + 1 <sup>1</sup> / <sub>4</sub> " C, 2 - 1" + 1 <sup>1</sup> / <sub>4</sub> " + 1 <sup>1</sup> / <sub>2</sub> " + 2" C | 2 - 1 <sup>1</sup> / <sub>2</sub> ", 2 - 3 <sup>3</sup> / <sub>4</sub> " + 1" C |
| <b>New!</b> TP72181-DTAB-BLUE  | 4 <sup>11</sup> / <sub>16</sub> " sq. | 3 <sup>3</sup> / <sub>4</sub> " | AB    | Welded         | Ground screw     | 66.0         | 2 - 1 <sup>1</sup> / <sub>2</sub> " + 3 <sup>3</sup> / <sub>4</sub> " C, 2 - 1" + 1 <sup>1</sup> / <sub>4</sub> " C, 2 - 1" + 1 <sup>1</sup> / <sub>4</sub> " + 1 <sup>1</sup> / <sub>2</sub> " + 2" C | 2 - 1 <sup>1</sup> / <sub>2</sub> ", 2 - 3 <sup>3</sup> / <sub>4</sub> " + 1" C |
| <b>New!</b> TP5BC-BLUE         | 5" sq.                                | Blank                           | -     | Cover          | -                | -            | -  | -   |
| <b>New!</b> TP5CP-BLUE         | 5" sq.                                | -                               | -     | 4" Sq. adapter | -                | -            | -  | -   |
| <b>New!</b> TP5SQ5075-BLUE     | 5" sq.                                | 2 <sup>7</sup> / <sub>8</sub> " | -     | Welded         | -                | 67.0         | 12 - 1 <sup>1</sup> / <sub>2</sub> " + 3 <sup>3</sup> / <sub>4</sub> " C   | 3 - 1 <sup>1</sup> / <sub>2</sub> ", 2 - 3 <sup>3</sup> / <sub>4</sub> "        |
| <b>New!</b> TP5SQ50100-BLUE    | 5" sq.                                | 2 <sup>7</sup> / <sub>8</sub> " | -     | Welded         | -                | 67.0         | 4 - 1 <sup>1</sup> / <sub>2</sub> ", 8 - 1"  | 3 - 1 <sup>1</sup> / <sub>2</sub> ", 2 - 3 <sup>3</sup> / <sub>4</sub> "        |
| <b>New!</b> TP5SQ100125-BLUE   | 5" sq.                                | 2 <sup>7</sup> / <sub>8</sub> " | -     | Welded         | -                | 67.0         | 4 - 1", 4 - 1 <sup>1</sup> / <sub>4</sub> "  | 3 - 1 <sup>1</sup> / <sub>2</sub> ", 2 - 3 <sup>3</sup> / <sub>4</sub> "        |

Not UL Listed.



## Red fire signal boxes

| Cat. #                        | Box size                              | Box depth                         | Brkt. | Descrip.       | Grounding method | Cap. cu. in. | Knockouts  |  |
|-------------------------------|---------------------------------------|-----------------------------------|-------|----------------|------------------|--------------|--|--|
|                               |                                       |                                   |       |                |                  |              | Sides  | Bottom   |
| TP472RED                      | 4" sq.                                | Blank                             | -     | Cover          | -                | -            | -  | -  |
| TP414RED                      | 4" sq.                                | 1 <sup>1</sup> / <sub>2</sub> "   | -     | Drawn          | -                | 21.0         | 8 - 1 <sup>1</sup> / <sub>2</sub> ", 4 - 3 <sup>3</sup> / <sub>4</sub> "   | 3 - 1 <sup>1</sup> / <sub>2</sub> ", 2 - 3 <sup>3</sup> / <sub>4</sub> "                                     |
| TP404RED                      | 4" sq.                                | 1 <sup>1</sup> / <sub>2</sub> "   | -     | Welded         | -                | 22.0         | 8 - 1 <sup>1</sup> / <sub>2</sub> ", 4 - 3 <sup>3</sup> / <sub>4</sub> "   | 3 - 1 <sup>1</sup> / <sub>2</sub> ", 2 - 3 <sup>3</sup> / <sub>4</sub> "                                     |
| TP403RED                      | 4" sq.                                | 2 <sup>7</sup> / <sub>8</sub> "   | -     | Welded         | Ground bump      | 30.3         | 8 - 1 <sup>1</sup> / <sub>2</sub> ", 4 - 1 <sup>1</sup> / <sub>2</sub> " + 3 <sup>3</sup> / <sub>4</sub> " E   | 2 - 1 <sup>1</sup> / <sub>2</sub> ", 2 - 1 <sup>1</sup> / <sub>2</sub> " + 3 <sup>3</sup> / <sub>4</sub> " E |
| TP434RED                      | 4" sq.                                | 2 <sup>7</sup> / <sub>8</sub> "   | -     | Drawn          | Ground bump      | 30.3         | 8 - 1 <sup>1</sup> / <sub>2</sub> ", 4 - 3 <sup>3</sup> / <sub>4</sub> "   | 3 - 1 <sup>1</sup> / <sub>2</sub> ", 2 - 3 <sup>3</sup> / <sub>4</sub> "                                     |
| TP434REDMSB                   | 4" sq.                                | 2 <sup>7</sup> / <sub>8</sub> "   | MSB   | Drawn          | Ground bump      | 30.3         | 8 - 1 <sup>1</sup> / <sub>2</sub> ", 4 - 3 <sup>3</sup> / <sub>4</sub> "   | 3 - 1 <sup>1</sup> / <sub>2</sub> ", 2 - 3 <sup>3</sup> / <sub>4</sub> "                                     |
| TP432RED                      | 4" sq.                                | 2 <sup>7</sup> / <sub>8</sub> "   | -     | Welded         | Ground bump      | 30.3         | 8 - 3 <sup>3</sup> / <sub>4</sub> "  | 2 - 1 <sup>1</sup> / <sub>2</sub> ", 2 - 1 <sup>1</sup> / <sub>2</sub> " + 3 <sup>3</sup> / <sub>4</sub> " E |
| TP432REDMSB                   | 4" sq.                                | 2 <sup>7</sup> / <sub>8</sub> "   | MSB   | Welded         | Ground bump      | 30.3         | 8 - 3 <sup>3</sup> / <sub>4</sub> "  | 2 - 1 <sup>1</sup> / <sub>2</sub> ", 2 - 1 <sup>1</sup> / <sub>2</sub> " + 3 <sup>3</sup> / <sub>4</sub> " E |
| TP451RED                      | 4" sq.                                | 2 <sup>7</sup> / <sub>8</sub> "   | VMS   | Welded         | -                | 30.3         | 6 - 1 <sup>1</sup> / <sub>2</sub> ", 3 - 1 <sup>1</sup> / <sub>2</sub> " + 3 <sup>3</sup> / <sub>4</sub> " E   | 2 - 1 <sup>1</sup> / <sub>2</sub> ", 2 - 1 <sup>1</sup> / <sub>2</sub> " + 3 <sup>3</sup> / <sub>4</sub> " E |
| TP413RED                      | 4" sq.                                | 3 <sup>1</sup> / <sub>2</sub> "   | -     | Welded         | -                | 46.0         | 12 - 1 <sup>1</sup> / <sub>2</sub> " + 3 <sup>3</sup> / <sub>4</sub> " C   | 4 - 1 <sup>1</sup> / <sub>2</sub> " + 3 <sup>3</sup> / <sub>4</sub> " C                                      |
| TP411RED                      | 4" sq.                                | 3 <sup>1</sup> / <sub>2</sub> "   | SIDE  | Welded         | -                | 46.0         | 12 - 1 <sup>1</sup> / <sub>2</sub> " + 3 <sup>3</sup> / <sub>4</sub> " C   | 4 - 1 <sup>1</sup> / <sub>2</sub> " + 3 <sup>3</sup> / <sub>4</sub> " C                                      |
| TP423RED                      | 4" sq.                                | 1 <sup>1</sup> / <sub>2</sub> "   | VMS   | Welded         | -                | 22.0         | 6 - 1 <sup>1</sup> / <sub>2</sub> ", 3 - 1 <sup>1</sup> / <sub>2</sub> " + 3 <sup>3</sup> / <sub>4</sub> " E   | 2 - 1 <sup>1</sup> / <sub>2</sub> ", 2 - 1 <sup>1</sup> / <sub>2</sub> " + 3 <sup>3</sup> / <sub>4</sub> " E |
| TP428RED                      | 4" sq.                                | 1 <sup>1</sup> / <sub>2</sub> "   | -     | Drawn          | -                | 21.0         | 8 - 1 <sup>1</sup> / <sub>2</sub> ", 4 - 3 <sup>3</sup> / <sub>4</sub> "   | -  |
| TP478RED                      | 4" sq.                                | Flat                              | -     | Cover          | -                | -            | -  | -  |
| TP484RED                      | 4" sq.                                | 1 <sup>1</sup> / <sub>2</sub> " R | -     | Mud ring       | -                | 3.8          | -  | -  |
| TP489RED                      | 4" sq.                                | 3 <sup>3</sup> / <sub>8</sub> " R | -     | Mud ring       | -                | 4.3          | -  | -  |
| TP486RED                      | 4" sq.                                | 3 <sup>3</sup> / <sub>4</sub> " R | -     | Mud ring       | -                | 5.5          | -  | -  |
| TP568RED                      | 4 <sup>11</sup> / <sub>16</sub> " sq. | Blank                             | -     | Cover          | -                | -            | -  | -  |
| TP556RED                      | 4 <sup>11</sup> / <sub>16</sub> " sq. | 2 <sup>7</sup> / <sub>8</sub> "   | -     | Drawn          | -                | 42.0         | 8 - 1 <sup>1</sup> / <sub>2</sub> ", 4 - 3 <sup>3</sup> / <sub>4</sub> "   | 3 - 1 <sup>1</sup> / <sub>2</sub> ", 2 - 3 <sup>3</sup> / <sub>4</sub> "                                     |
| TP558RED                      | 4 <sup>11</sup> / <sub>16</sub> " sq. | 2 <sup>7</sup> / <sub>8</sub> "   | -     | Drawn          | -                | 42.0         | 4 - 3 <sup>3</sup> / <sub>4</sub> ", 4 - 1"  | 3 - 1 <sup>1</sup> / <sub>2</sub> ", 2 - 3 <sup>3</sup> / <sub>4</sub> "                                     |
| <b>New!</b> TP72181-1-1/4-RED | 4 <sup>11</sup> / <sub>16</sub> " sq. | 3"                                | -     | Welded         | Ground bump      | 60.0         | 8 - 1 <sup>1</sup> / <sub>4</sub> "  | 2 - 1 <sup>1</sup> / <sub>2</sub> ", 2 - 3 <sup>3</sup> / <sub>4</sub> "                                     |
| <b>New!</b> TP72181-1-1/2-RED | 4 <sup>11</sup> / <sub>16</sub> " sq. | 3"                                | -     | Welded         | Ground bump      | 60.0         | 4 - 1 <sup>1</sup> / <sub>2</sub> "  | 2 - 1 <sup>1</sup> / <sub>2</sub> ", 2 - 3 <sup>3</sup> / <sub>4</sub> "                                     |
| <b>New!</b> TP72181-DTAB-RED  | 4 <sup>11</sup> / <sub>16</sub> " sq. | 3 <sup>3</sup> / <sub>4</sub> "   | -     | Welded         | Ground screw     | 66.0         | 2 - 1 <sup>1</sup> / <sub>2</sub> " + 3 <sup>3</sup> / <sub>4</sub> " C, 2 - 1" + 1 <sup>1</sup> / <sub>4</sub> " C, 2 - 1" + 1 <sup>1</sup> / <sub>4</sub> " + 1 <sup>1</sup> / <sub>2</sub> " + 2" C | 2 - 1 <sup>1</sup> / <sub>2</sub> ", 2 - 3 <sup>3</sup> / <sub>4</sub> " + 1" C                              |
| <b>New!</b> TP72181-DTAB-RED  | 4 <sup>11</sup> / <sub>16</sub> " sq. | 3 <sup>3</sup> / <sub>4</sub> "   | AB    | Welded         | Ground screw     | 66.0         | 2 - 1 <sup>1</sup> / <sub>2</sub> " + 3 <sup>3</sup> / <sub>4</sub> " C, 2 - 1" + 1 <sup>1</sup> / <sub>4</sub> " C, 2 - 1" + 1 <sup>1</sup> / <sub>4</sub> " + 1 <sup>1</sup> / <sub>2</sub> " + 2" C | 2 - 1 <sup>1</sup> / <sub>2</sub> ", 2 - 3 <sup>3</sup> / <sub>4</sub> " + 1" C                              |
| TP564RED                      | 4 <sup>11</sup> / <sub>16</sub> " sq. | 2 <sup>7</sup> / <sub>8</sub> "   | -     | Drawn          | -                | 42.0         | 8 - 1 <sup>1</sup> / <sub>2</sub> ", 4 - 3 <sup>3</sup> / <sub>4</sub> "   | -  |
| <b>New!</b> TP5BC-RED         | 5" sq.                                | Blank                             | -     | Cover          | -                | -            | -  | -  |
| <b>New!</b> TP5CP-RED         | 5" sq.                                | -                                 | -     | 4" Sq. adapter | -                | -            | -  | -  |
| <b>New!</b> TP5SQ5075-RED     | 5" sq.                                | 2 <sup>7</sup> / <sub>8</sub> "   | -     | Welded         | -                | 67.0         | 12 - 1 <sup>1</sup> / <sub>2</sub> " + 3 <sup>3</sup> / <sub>4</sub> " C   | 3 - 1 <sup>1</sup> / <sub>2</sub> ", 2 - 3 <sup>3</sup> / <sub>4</sub> "                                     |
| <b>New!</b> TP5SQ50100-RED    | 5" sq.                                | 2 <sup>7</sup> / <sub>8</sub> "   | -     | Welded         | -                | 67.0         | 4 - 1 <sup>1</sup> / <sub>2</sub> ", 8 - 1"  | 3 - 1 <sup>1</sup> / <sub>2</sub> ", 2 - 3 <sup>3</sup> / <sub>4</sub> "                                     |
| <b>New!</b> TP5SQ100125-RED   | 5" sq.                                | 2 <sup>7</sup> / <sub>8</sub> "   | -     | Welded         | -                | 67.0         | 4 - 1", 4 - 1 <sup>1</sup> / <sub>4</sub> "  | 3 - 1 <sup>1</sup> / <sub>2</sub> ", 2 - 3 <sup>3</sup> / <sub>4</sub> "                                     |
| TP322RED                      | 4" oct.                               | Blank                             | -     | Cover          | -                | -            | -  | -  |
| TP274RED                      | 4" oct.                               | 1 <sup>1</sup> / <sub>2</sub> "   | -     | Drawn          | -                | 15.5         | 4 - 1 <sup>1</sup> / <sub>2</sub> "  | 5 - 1 <sup>1</sup> / <sub>2</sub> "  |
| TP278RED                      | 4" oct.                               | 1 <sup>1</sup> / <sub>2</sub> "   | -     | Drawn          | -                | 15.5         | 2 - 1 <sup>1</sup> / <sub>2</sub> ", 2 - 3 <sup>3</sup> / <sub>4</sub> "   | 3 - 1 <sup>1</sup> / <sub>2</sub> ", 2 - 3 <sup>3</sup> / <sub>4</sub> "                                     |
| TP292RED                      | 4" oct.                               | 2 <sup>7</sup> / <sub>8</sub> "   | -     | Drawn          | -                | 21.5         | 2 - 1 <sup>1</sup> / <sub>2</sub> ", 2 - 3 <sup>3</sup> / <sub>4</sub> "   | 3 - 1 <sup>1</sup> / <sub>2</sub> ", 2 - 3 <sup>3</sup> / <sub>4</sub> "                                     |

Not UL Listed.

CSA certified.

**U.S. (global headquarters):  
Eaton's Crouse-Hinds Division**

1201 Wolf Street  
Syracuse, NY 13208

(866) 764-5454  
FAX: (315) 477-5179

Orders Only:  
ECHUSAOrders@eaton.com

crousecustomerctr@eaton.com

**For more information:**

If further assistance is required, please contact an authorized Eaton Distributor, Sales Office, or Customer Service Department.

**Canada**

Toll Free: 800-265-0502  
FAX: (800) 263-9504  
FAX Orders only: (866) 653-0645

**Mexico/Latin America/Caribbean**

52-555-804-4000  
FAX: 52-555-804-4020  
ventascentromex@eaton.com

**Europe (Germany)**

49 (0) 6271 806-500  
49 (0) 6271 806-476  
sales.CCH.de@  
cooperindustries.com

**Eaton Middle East**

9714-8066100  
FAX: 9714-8894813  
chmesales@eaton.com

**Singapore**

65-6825-1668  
FAX: 65-6645-9811  
chsi-sales@eaton.com

**China**

86-21-2899-3600  
FAX: 86-21-2899-4055  
cchsales@  
cooperindustries.com

**Korea**

82 2 6380 4032  
82-2-6380-4070  
CCHKsales@eaton.com

**Australia**

1300-332-866  
FAX: 61-2-9693-5127  
CEASales@  
cooperindustries.com

**India**

91-124-4683888  
FAX: 91-124-4683899  
cchindia@eaton.com

**Eaton's Crouse-Hinds Division**  
1201 Wolf Street  
Syracuse, NY 13208  
Crouse-Hinds.com

**Eaton**  
1000 Eaton Boulevard  
Cleveland, OH 44122  
United States  
Eaton.com

© 2018 Eaton  
All Rights Reserved  
Printed in USA  
Publication No. 5394-0818  
August 2018

Eaton is a registered trademark.  
All other trademarks are property  
of their respective owners.