

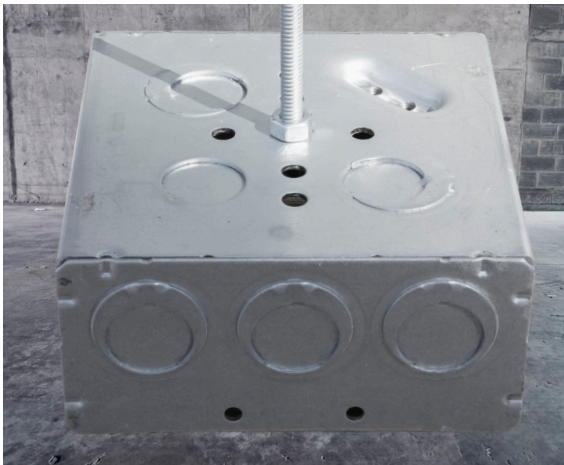
4-11/16" square boxes for hanger support applications

Overview:

Eaton's Crouse-Hinds 4-11/16" square boxes are now configured for use in hanger support applications.

Features:

- 4-11/16" square, 2-1/8" deep, 44.0 cubic inch capacity
- Center back box knockout replaced with 17/64" hole to accommodate 1/4" threaded rod
- Support of utilization equipment weighing not more than 6 lbs
- UL Listed



*Consult the NEC and/or local authority having jurisdiction regarding acceptable installation methods.

Model number	Description	Grounding method	Carton QTY
TP5HS	4-11/16" box, welded	Ground bump	25

Knockouts	Sides	Bottom
	(12) 1/2 & 3/4" E	(1) 1/2", (2) 1/2 & 3/4" E

