

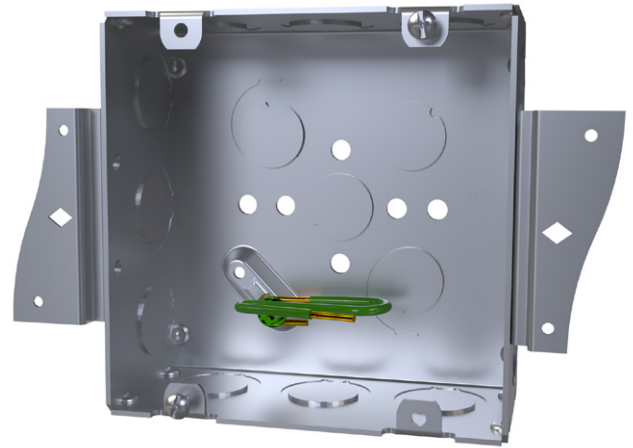
# 4-11/16" square boxes for stud mount applications

**Overview:**

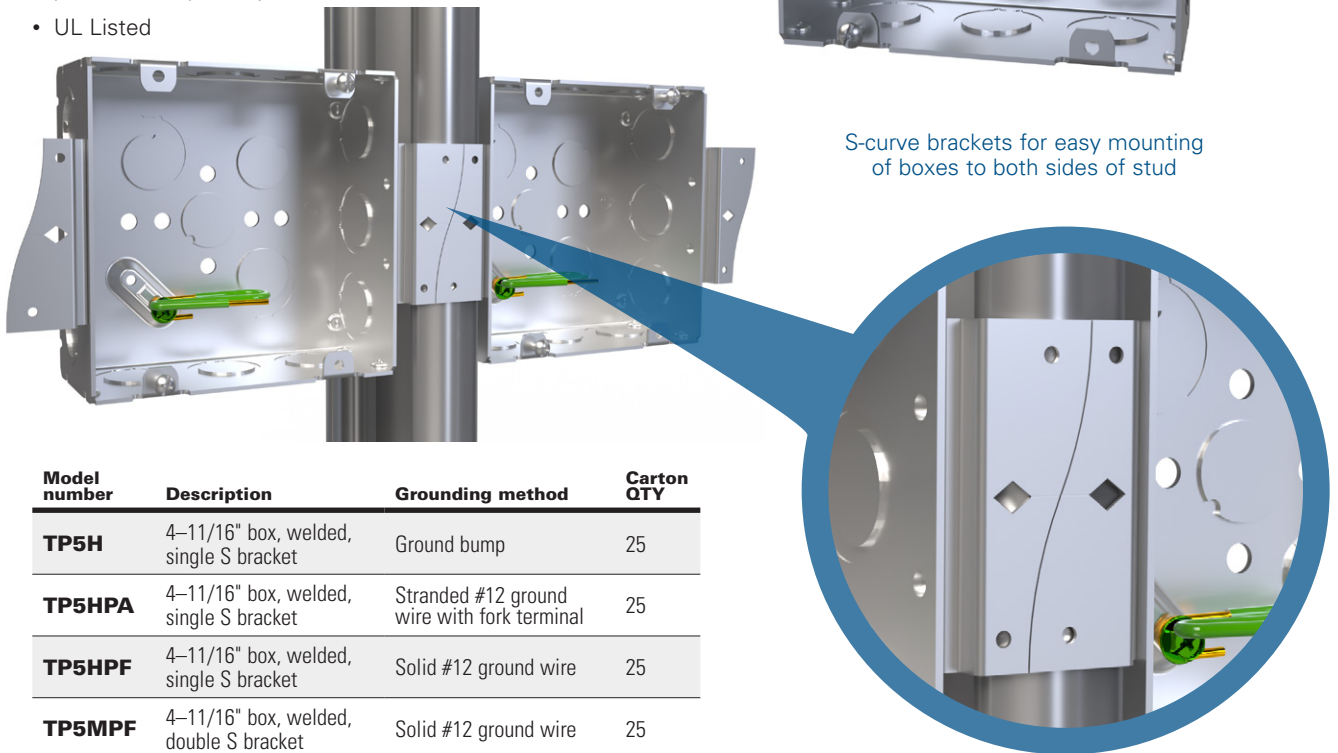
Eaton's Crouse-Hinds 4-11/16" square boxes configured for use in stud mount applications.

**Features:**

- 4-11/16" square, 2-1/8" deep, 44.0 cubic inch capacity
- S-curve bracket allows for mounting on either or both sides of the stud
- Available with single or double stud brackets
- Backside or far side support accessories must be purchased separately
- UL Listed

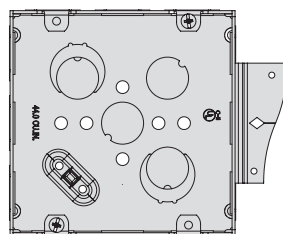


S-curve brackets for easy mounting of boxes to both sides of stud

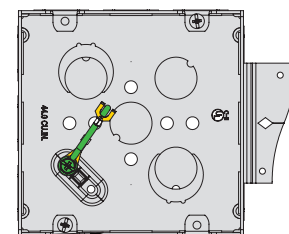


Model number	Description	Grounding method	Carton QTY
<b>TP5H</b>	4-11/16" box, welded, single S bracket	Ground bump	25
<b>TP5HPA</b>	4-11/16" box, welded, single S bracket	Stranded #12 ground wire with fork terminal	25
<b>TP5HPF</b>	4-11/16" box, welded, single S bracket	Solid #12 ground wire	25
<b>TP5MPF</b>	4-11/16" box, welded, double S bracket	Solid #12 ground wire	25

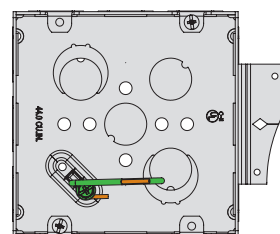
	Sides	Bottom
<b>Knockouts</b>	(12) 1/2 & 3/4" E	(2) 1/2", (2) 1/2 & 3/4" E



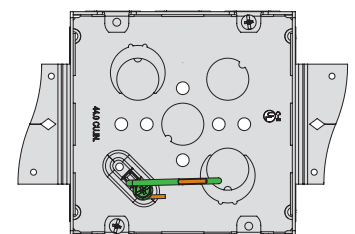
TP5H



TP5HPA



TP5HPF

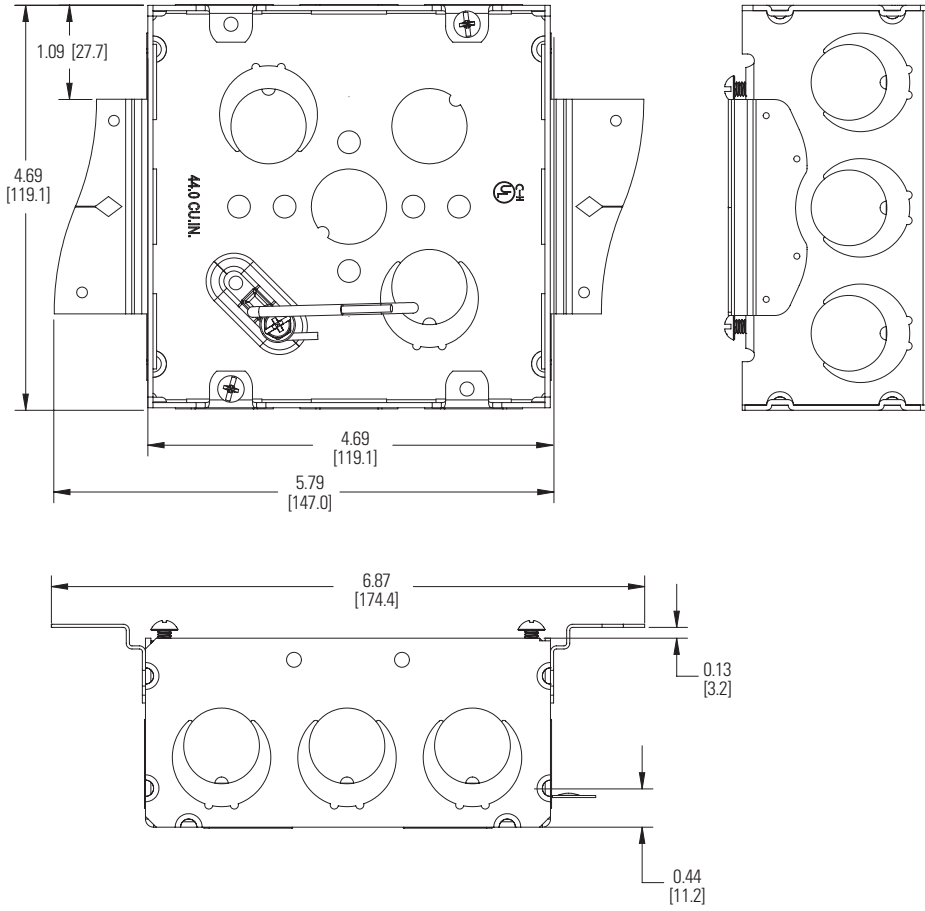


TP5MPF



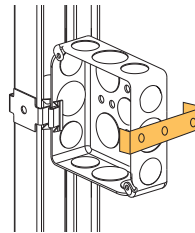
Powering Business Worldwide

# Dimensions



## Backside or far side support accessories (ordered separately)

Model number	UPC	Description	Carton QTY
<b>BF1-40</b>	78101118320	Box stabilizer for 2-½" studs	100
<b>BF1-56</b>	78101118325	Box stabilizer for 3-½" studs	100
<b>BF1-64</b>	78101118330	Box stabilizer for 4" studs	100
<b>BF1-96</b>	78101118335	Box stabilizer for 6" studs	100



**Eaton**  
 1000 Eaton Boulevard  
 Cleveland, OH 44122  
 United States  
 Eaton.com

**Eaton's Crouse-Hinds**  
 1201 Wolf Street  
 Syracuse, NY 13208  
 Crouse-Hinds.com

© 2021 Eaton  
 All Rights Reserved  
 Printed in USA  
 Publication No. 5497-0921  
 September 2021

Eaton is a registered trademark.  
 All other trademarks are property  
 of their respective owners.