

## CoSPEC 3D User Guide

Configure, view and download Crouse-Hinds products in 2D and 3D.

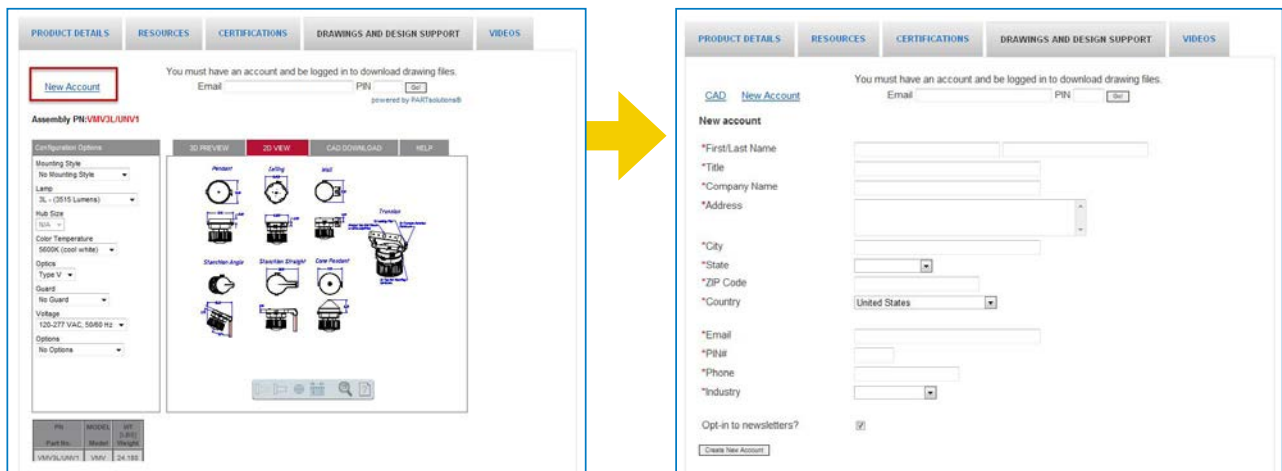
The following instructions will guide you through the CoSPEC 3D Drawing and Design tool from Eaton's Crouse-Hinds Business, which offers the ability to select and view products and 2D and 3D, and then download design content in one of nearly 100 different drawing file formats.

### Part I – Creating a User Account

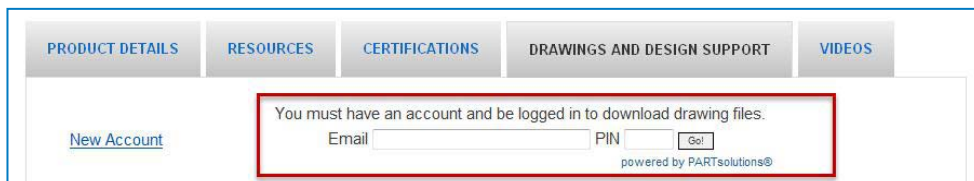
- First time users should select “New Account.” Users will not be able to download drawings until an account is created.
- A user account is required for tracking usage and updating users on product additions or enhancements. Your contact information will not be added to any mailing lists.
- Fill out all fields in the form.

**NOTE:** The PIN number is a four-digit code that you will determine. This number is not supplied to you.

- Select “Create New Account” and you are now ready to configure, view and download models!



- Now that you have an account, you can quickly log in here during future visits to download drawing files.



## Part II – Configuring and Viewing 3D Models

The CoSPEC library defaults to the 2D view tab with basic dimensions. You can zoom in by clicking the line art and using your mouse scroll wheel. Click and drag the line art as necessary.

The screenshot shows the PARTconfigurator interface. On the left, the 'Configuration Options' panel is visible with various settings. The main area shows a grid of 2D view options: Pendant, Ceiling, Wall, Trackless, Starbuck Angle, Starbuck Straight, and Cove Pendant. A yellow arrow points from the 2D view grid to a larger, detailed 2D view of a ceiling-mounted fixture. This detailed view includes dimensions: a diameter of 10.875 inches, a height of 2.00 inches, and a mounting bracket width of 11.625 inches with a 2.03 inch offset. The interface also includes tabs for '3D PREVIEW', '2D VIEW', 'CAD DOWNLOAD', and 'HELP'.

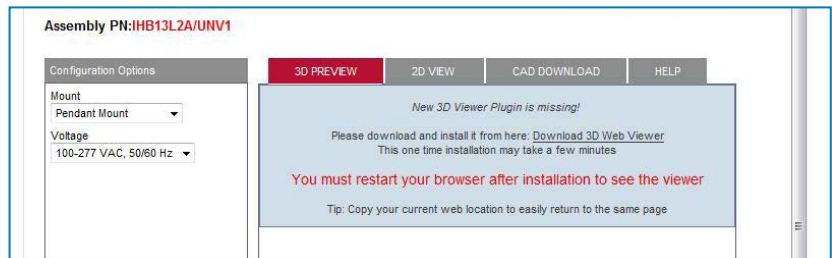
To configure and view 3D models, begin by using the dropdowns under the Configuration Options heading to build the exact product you need. While selecting each field, the catalog number will automatically update.

Once your catalog number has been configured, select the 3D preview tab, and then click "Generate Preview."

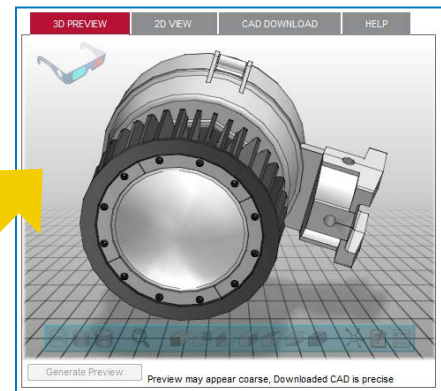
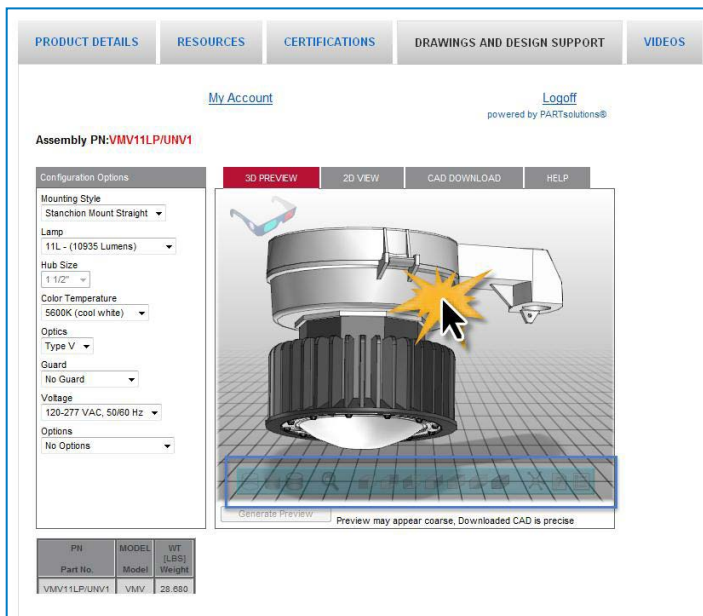
The screenshot shows the PARTconfigurator interface with the '3D PREVIEW' tab selected. The 'Configuration Options' panel on the left is set to: Mounting Style: Ceiling Mount Thru Feed; Lamp: 13L - (13226 Lumens); Hub Size: 3/4"; Color Temperature: 5600K (cool white); Optics: Type V; Guard: No Guard; Voltage: 120-277 VAC, 50/60 Hz; Options: No Options. The main area displays a message: "Select 'Generate Preview' below to build a 3D Preview." Below this message is a 'Generate Preview' button. A 'PARTconfigurator' logo is also visible. At the bottom, a table shows the updated part information:

PN	MODEL	WT
Part No.	Model	[LBS] Weight
VMV13L2C/UNV1	VMV	38.750

The first time you generate a 3D preview, you will be prompted to install a 3D Web Viewer. You must have this ActiveX control installed on your computer for the viewer to work. Just click the download link and follow the on-screen instructions.



The 3D model shown is completely interactive – you can view it from multiple angles, click and drag to rotate and zoom in on the model, and use your mouse's scroll wheel to zoom in and out.



ROTATE



ZOOM

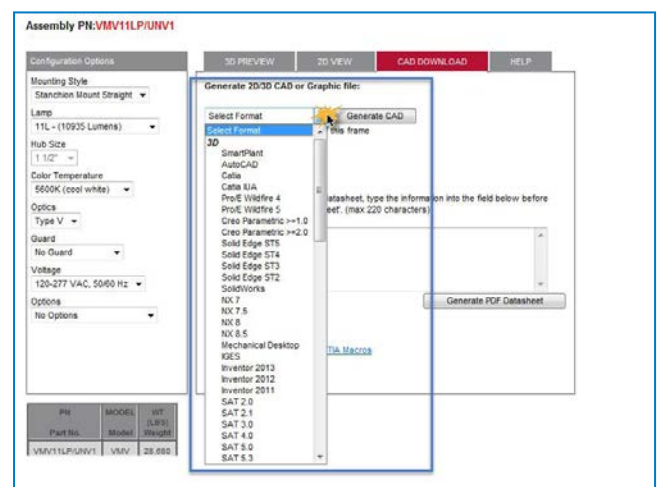
## Part III – Downloading a Single Drawing

Now that you've configured your part and viewed it in 3D, you're ready to download the model and its parametric data.

Select the CAD download tab. **Remember that you must be logged in at this point.**

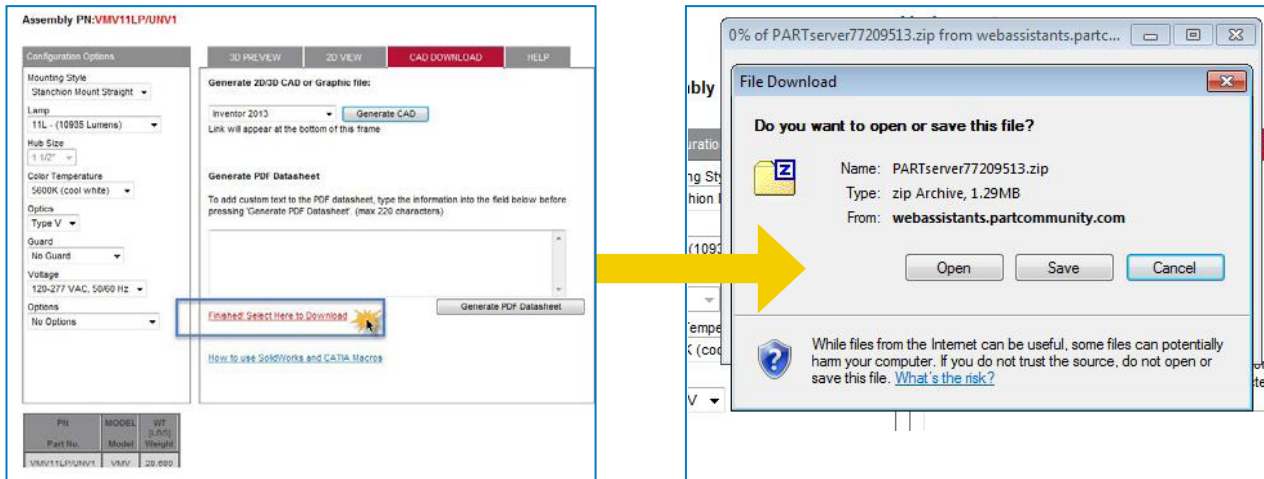
Click on the first dropdown to see the complete list of formats available to you. There are 85+ file formats available!

Select the desired format from the list and click the "Generate CAD" button.



After a short moment, you will see a "finished" link appear and your file will be ready for downloading. Click this link to begin the download process.

Select "Save" and save the compressed file to your computer.



When the download is complete, click "Close."

Now just open your design software and bring the Crouse-Hinds model into your project! It's as simple as that!

## Part IV – Downloading a Single Submittal Sheet

In addition to downloading drawings with parametric data, our CoSPEC tool allows you to quickly access SKU-specific datasheets for submittal packages.

After you have configured and viewed your part number, select the CAD download tab. **Remember that you must be logged in at this point.**

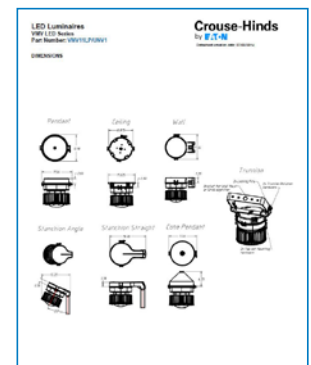
If custom text is required it can be added into the large text box. When ready, click "Generate PDF Datasheet."



After a short moment, you will see a new "finished" link appear and your datasheet will be ready for downloading. Click this link to begin the download process.

Select "Open" and then double-click on the PDF file to open the SKU datasheet.

The datasheet contains an embedded, interactive model of the part number, as well as key SKU-level and product family level specifications.

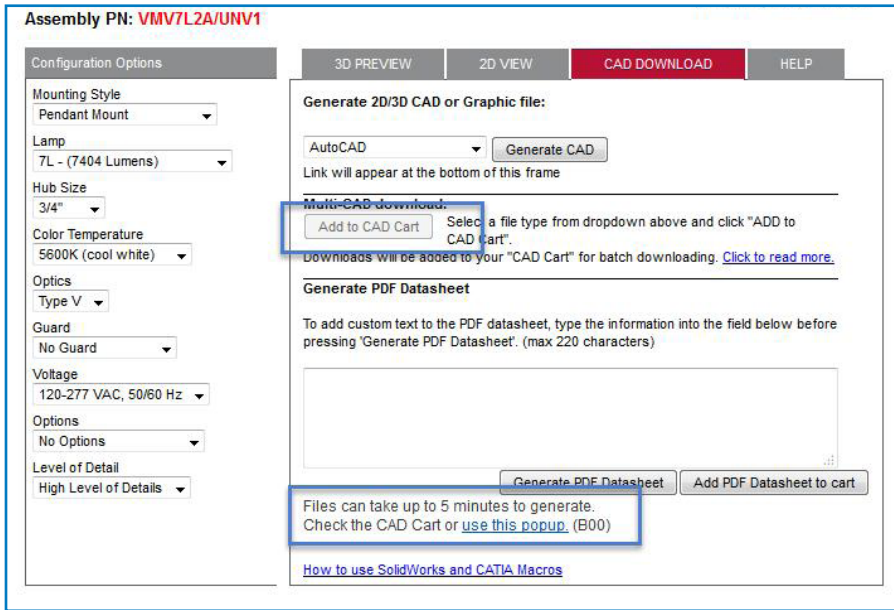




# Part V – Downloading Multiple Drawings and Datasheets

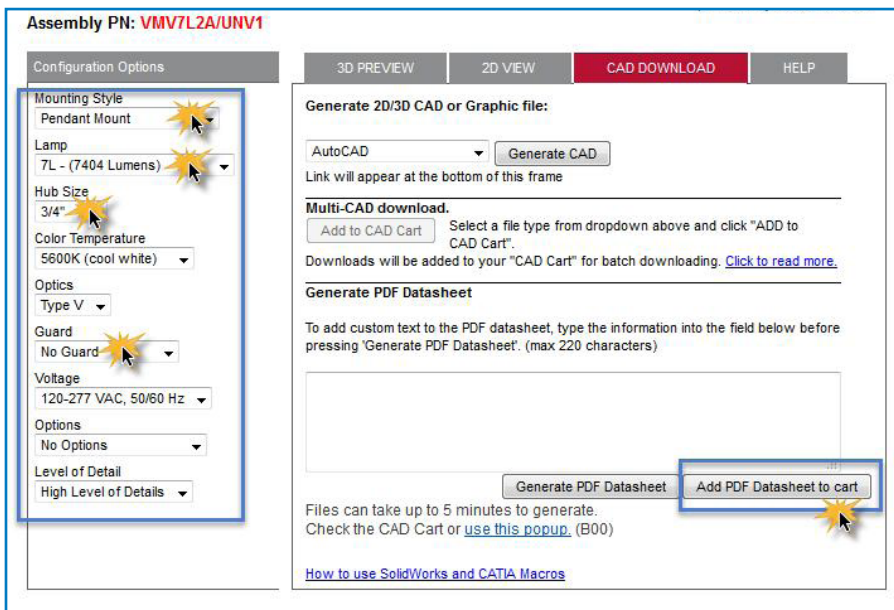
CoSPEC also allows you to download more than one product drawing and datasheet in a single, cart-style download. To do this, configure your first part number and click on the “Select Format” dropdown to choose your desired file format.

Click “Add to CAD Cart.” This download request is now stored in your cart.



Repeat this process for as many additional products as you require. Just configure a new part number, choose the format, and click [Add to CAD Cart](#). You can even go to different product pages within the Crouse-Hinds web site.

To add a PDF datasheet to your cart, select the “Add PDF Datasheet to Cart” button.



When you are ready to download all the files in your cart, click the "CAD Cart" link.

The CAD cart displays all the items you have selected for download. When the status column shows a green light for all SKUs, click "Retrieve Files" to initiate the download and save the files to your computer.

The CAD Cart interface displays a table of items with the following columns: Retrieve?, Status, SKU, Description, CAD Format, and Dates (Initial, Last, Expires). A yellow arrow points from the 'Retrieve Files' button in the left screenshot to the 'Retrieve Files' button in the right screenshot.

Retrieve?	Status	SKU	Description	CAD Format	Dates		
					Initial	Last	Expires
<input checked="" type="checkbox"/>		LBD012SA	LBD Series 90°	SAT 4.0	11/20/2014 1:31 PM	Never	11/27/2014 1:31 PM
<input checked="" type="checkbox"/>		LBD014	LBD Series 90°	Unigraphics NX 8.5	11/20/2014 2:34 PM	Never	11/27/2014 2:34 PM
<input checked="" type="checkbox"/>		LBD1100	LBD Series 90°	PDF Datasheet	11/20/2014 2:56 PM	Never	11/27/2014 2:56 PM
<input checked="" type="checkbox"/>		VMV11LJCG/UNV1	VMV LED Series	AutoCAD	12/03/2014 11:08 AM	Never	12/10/2014 11:08 AM
<input checked="" type="checkbox"/>		VMV7LZA/UNV1	VMV LED Series	AutoCAD	12/03/2014 11:10 AM	Never	12/10/2014 11:10 AM

Files can take up to 5 minutes to generate. When the status shows a green light for all SKUs, click "Retrieve Files" to start the download process.

Retrieve Files

## Conclusion

Eaton's Crouse-Hinds Business is committed to providing specification support tools that help simplify, streamline, and speed up the industrial design and specification process. From lighting layouts to drawings support tools to ROI calculators, submittal sheets and spec forms, Crouse-Hinds has you covered in virtually every aspect of the design process.

The CoSPEC 3D Design and Parametric Data library from Eaton's Crouse-Hinds Business will be a valuable tool for your use.

**See for yourself. Configure, view and download Crouse-Hinds products today.**

- Over 100 product families are available
- It's compatible with 85+ file formats
- Crouse-Hinds will continue to build out this site, adding new products to our library monthly.