



TW Series Thru-Wall Barrier® Cable/Conduit Sealing Device TWB Closure Kit

IF904

Installation Instructions

TWB closure kits are designed to seal unused frame openings of TW Series THRU-WALL BARRIER cable/conduit sealing devices. Select the TWB closure kit from Table I for use with the TWF (or TWFR) mounting frame to be sealed.

4. Insert cover/blanket assembly into mounting frame opening then place remaining cover onto opposite side and secure with 3/8" washers and self locking nuts.

| Mounting Frame | TWB Closure Kit |
|-----------------|---------------------------------------|
| TWF6 TWFR6 | TWB600 |
| TWF10 TWFR10 | TWB1000 |
| TWF12 TWFR12 | TWB600 (Two closure kits required) |
| TWF20 TWFR20 | TWB2000 |
| TWF24 TWFR24 | TWB2400 |
| TWF30 TWFR30 | TWB3000 |

Table I

INSTALLATION

1. Clean all inside surfaces of covers, frame and edges of frame opening. Remove any grout, dirt, dust or other foreign materials.
2. Apply a liberal coating of RTV106 silicone sealant (provided) around the outside edge of the flange located on the inside surface of **both** TWB closure kit covers.

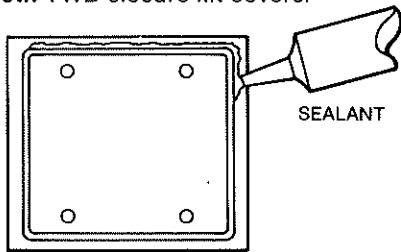


Figure 1.

3. Assemble one cover plate, necessary bolts and washers, and four insulating blankets as shown in Figure 2.

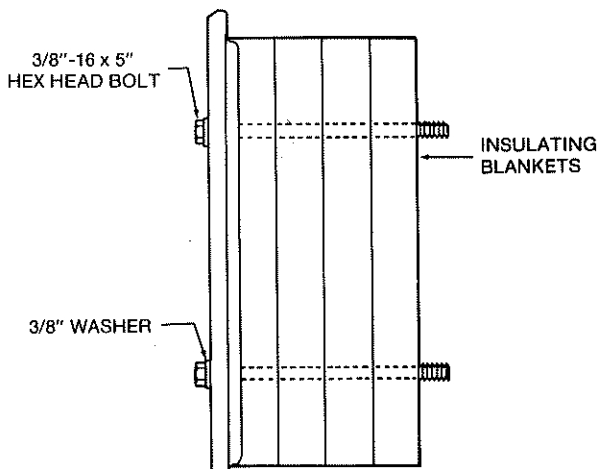


Figure 2
Cover/Blanket Assembly

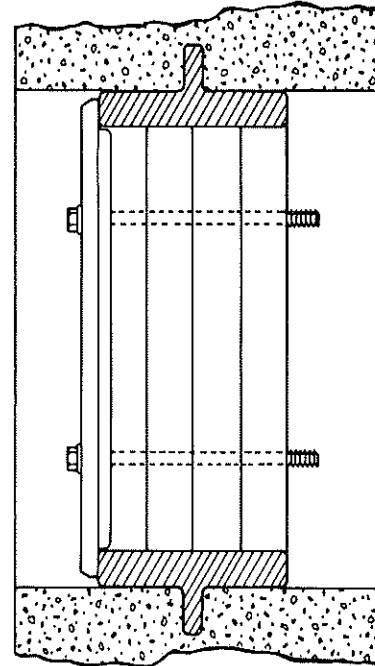


Figure 3.

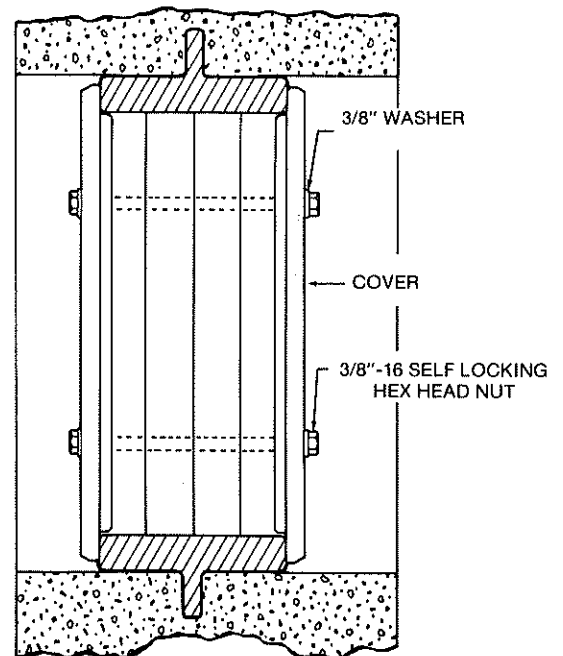


Figure 4.

5. Wipe away any excess RTV106, making sure that the cover and mounting frame joints are completely filled with the RTV silicone sealant.

All statements, technical information and recommendations contained herein are based on information and tests we believe to be reliable. The accuracy or completeness thereof are not guaranteed. In accordance with Crouse-Hinds "Terms and Conditions of Sale", and since conditions of use are outside our control, the purchaser should determine the suitability of the product for his intended use and assumes all risk and liability whatsoever in connection herewith.



CROUSE-HINDS

ELECTRICAL CONSTRUCTION MATERIALS • Division of Cooper Industries, Inc. • Syracuse, New York 13221 USA