



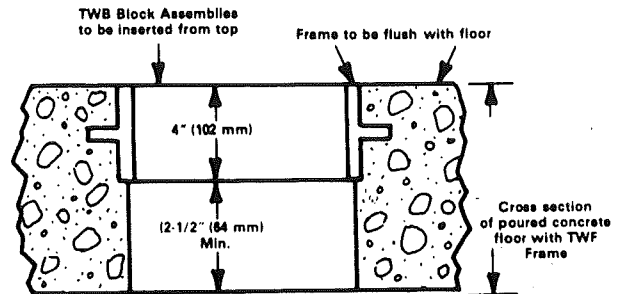
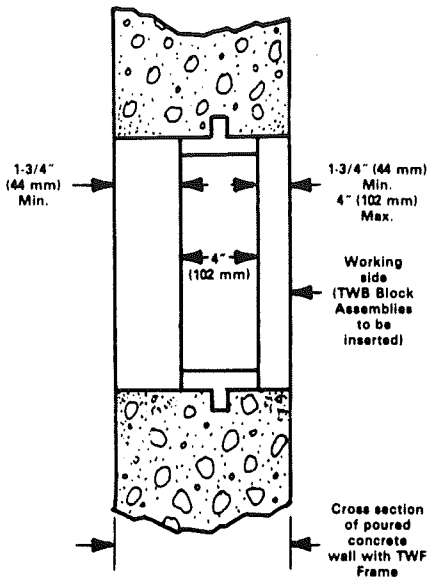
Application

TW THRU-WALL BARRIER Cable/Conduit Sealing Device consists of TWF frames assembled with TWB Sealing Block Assemblies.

Installation

TWF frames can be installed in four ways: cast, grouted, welded, or mechanically fastened to walls, floors, or ceilings. They can be mounted in any position, but keyways must be oriented so that TWB block assemblies will install in the desired position.

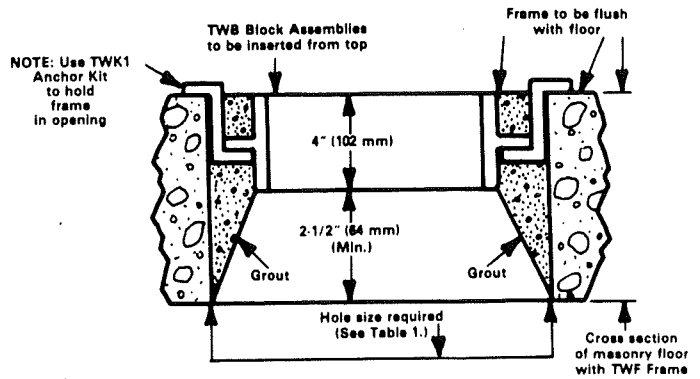
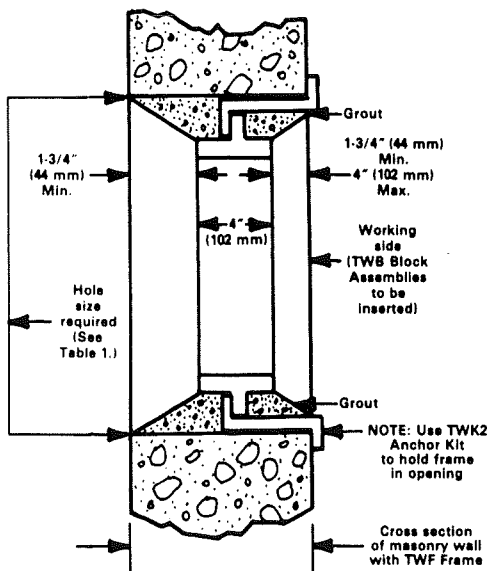
1. Cast Into Poured Walls Or Floors



NOTES:

- A. Install bonding jumper/grounding conductor adjacent to frame when required by specifications.
- B. Thoroughly clean any spillage out of frame and from edge of frame opening.
- C. Minimum spacing between frames to be 16".

2. Grouted In Masonry Walls Or Floors



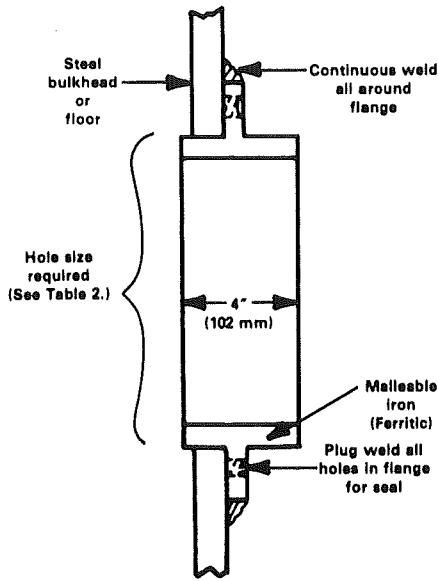
NOTES:

- A. Install bonding jumper/grounding conductor adjacent to frame when required by specifications.
- B. Grout in frame on both sides using a non-shrink cement type of grouting material.
- C. Thoroughly clean any spillage out of frame and from edge of frame opening.

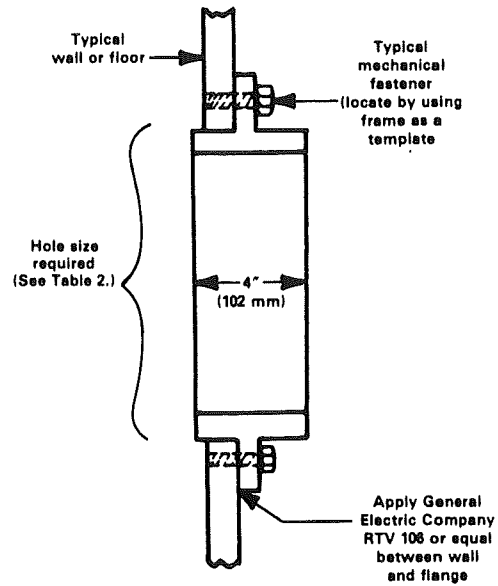
Table 1.

HOLE OPENING SIZE REQUIRED FOR GROUTING IN WALL OR FLOOR		
TWF 6	9-1/4" (235 mm)	13-1/2" (343 mm)
TWF 10	12-1/4" (311 mm)	13-1/2" (343 mm)
TWF 12	11" (279 mm)	23-1/2" (597 mm)
TWF 20	16-3/4" (426 mm)	22-1/4" (520 mm)
TWF 24	16-3/4" (426 mm)	25-3/4" (654 mm)
TWF30	16-3/4" (426 mm)	30-1/2" (775 mm)

3. Welded To Steel Bulkheads Or Floors



4. Mechanically Fastened To Wall Or Floors



NOTES:

- A. Welding rod should be Eutectic Castolin Corp. Xuper™ 2240 or equal. All fillet welds to be 1/4" to 3/8".
- B. TWF12 Frame is beveled. Beveled side should be mounted away from wall of floor.

Table 2.

	Hole Opening Size Required for TWF Mounting In Steel Bulkhead, Wall or Floor		Fastener Hole In Frame	
			Diameter	No. Holes
TWF6	6-1/4" (159 mm)	10-3/4" (273 mm)	3/8" (10 mm)	4
TWF10	9-1/2" (241 mm)	10-5/8" (270 mm)	3/8" (10 mm)	4
TWF12	21" (533 mm)	6-3/4" (171 mm)	9/16" (14 mm)	4
TWF20	17-3/4" (451 mm)	12" (305 mm)	9/16" (14 mm)	4
TWF24	21" (533 mm)	12" (305 mm)	9/16" (14 mm)	4
TWF30	25-7/8" (657 mm)	12" (305 mm)	9/16" (14 mm)	4

UL Classification data for fire rated applications of TW Series products is available upon request.

All statements, technical information and recommendations contained herein are based on information and tests we believe to be reliable. The accuracy or completeness thereof are not guaranteed. In accordance with Crouse-Hinds "Terms and Conditions of Sale", and since conditions of use are outside our control, the purchaser should determine the suitability of the product for his intended use and assumes all risk and liability whatsoever in connection therewith.



**CROUSE-HINDS
ELECTRICAL
CONSTRUCTION
MATERIALS**

Division of Cooper Industries, Inc. • Syracuse, New York 13221 • USA